

# CLOSE COUPLED PUMP MOTORS

## HIGH EFFICIENCY

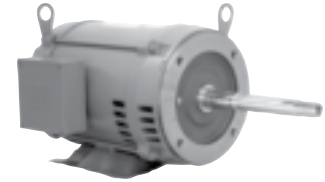


### ODP – THREE PHASE

WEG offers both JM and JP standardized types of ODP close-coupled pump line of motors. Remember that ODP are suitable where dirt and moisture are at a minimum.



**JM**



**JP**

FRACTIONAL HP

GENERAL PURPOSE

NEMA PREMIUM EFFICIENCY

CRUSHER® DUTY

IEC TRU-METRIC™

PUMP MOTORS

DEFINITE PURPOSE

ADD-ON™ MODIFICATIONS

MOTOR TECHNICAL DATA

DRIVES & SOFT STARTERS

CONTROLS

## APPLICATIONS

Specially developed line for industrial and commercial pumping applications.

- Water pumping
- Process
- Transfer and circulating pumps

## STANDARD FEATURES

- 3 phase, II, IV and Mpole, 60Hz
- Voltage: 208-230/460V/460V
- Squirrel cage rotor / Aluminum die cast
- Open drip proof design
- NEMA dimensions
- Service factor: 1.15
- Class 'F' insulation
- Temperature rise: Class 'B' (80°C)
- Continuous Duty (S1)
- 104°F (40°C) ambient temperature
- 1045 carbon steel shaft
- F1 mount (with cast iron 'C' Flange)
- Paint: Enamel alkyd resin base
- Color: RAL 5007 (Blue)
- NPT threaded holes in T-Box
- Stainless steel nameplate

## OPTIONAL FEATURES

- Cable glands
- Special voltages
- Specially designed shaft
- Thermistors, Thermostats or RTD's (PT100)
- Roller bearings on drive end
- IEC metric frames (on request) - For frames 254JM/JP up to 365JM/JP
- Stainless steel shaft
- Class 'H' insulation
- Design C
- 53V

## FRAME – SPECIFIC FEATURES

FOR FRAME 143/5JM/JP, ONLY

- Welded steel plate frames (welded feet)
- Cast iron endshields fixed with through bolt construction
- Bearings (double shielded)
- Degree of protection: IP21

FOR FRAME 182JM up to 215JM, only

- Welded steel plate frames (welded feet)
- Aluminum endshields and Terminal box
- Cooling system with finned rotor
- Cast iron endshields fixed with through bolt construction
- Bearings (double shielded)
- Degree of protection: IP21

FOR FRAME 254JM UP TO 445JM

- Cast iron frames
- Cast iron endshields and terminal box
- Cooling system with finned rotor
- Regreasable bearings system (frame 254JM and up)
- Degree of protection: IP23

ALL MOTORS ARE TESTED ACCORDING TO IEEE 112 STD. - METHOD 'B' OR C390 CSA



APPROVED BY



E 104590



APPROVED BY



LR 38324



# CLOSE COUPLED PUMP MOTORS

## HIGH EFFICIENCY



### "JM" TYPE - ODP - THREE-PHASE

HP	RPM	NEMA Frame	Catalog Number	List Price	Mult. Sym.	Approx. Shipp. Weight Lbs	FL Amps 460V	FL Eff. %	"C" Dimension (in.)	Voltage	Notes
1	1800	143JM	00118OP3E143JM	437	P1C	36	1.41	82.5	14.055	208-230/460V	
	3600	143JM	00156OP3E143JM	453	P1C	32	1.95	82.5	14.055	208-230/460V	
1.5	1800	145JM	00158OP3E145JM	478	P1C	40	1.98	84.0	14.055	208-230/460V	
	3600	145JM	00236OP3E145JM	498	P1C	43	2.52	84.0	14.055	208-230/460V	
2	1800	145JM	00218OP3E145JM	524	P1C	43	2.87	84.0	14.055	208-230/460V	
	3600	145JM	00336OP3E145JM	565	P1C	49	3.65	84.0	14.055	208-230/460V	
3	1800	182JM	00318OP3E182JM	557	P1C	56	3.94	86.5	14.527	208-230/460V	
	3600	182JM	00536OP3E182JM	669	P1C	57	6.17	86.5	14.527	208-230/460V	
5	1800	184JM	00518OP3E184JM	740	P1C	69	6.39	87.5	15.315	208-230/460V	
	3600	184JM	00736OP3E184JM	862	P1C	69	8.97	87.5	15.315	208-230/460V	
7.5	1800	213JM	00718OP3E213JM	945	P1C	85	9.40	88.5	17.323	208-230/460V	
	3600	213JM	01036OP3E213JM	1,109	P1C	108	11.8	88.5	17.323	208-230/460V	
10	1800	215JM	01018OP3E215JM	1,161	P1C	109	12.7	89.5	17.323	208-230/460V	
	3600	215JM	01536OP3E215JM	1,447	P1C	139	17.1	89.5	17.323	208-230/460V	
15	1800	254JM	01518OP3E254JM	1,749	P1C	247	18.7	91.0	22.169	208-230/460V	
	3600	254JM	02036OP3E254JM	1,816	P1C	205	24.6	90.2	22.169	208-230/460V	
20	1800	256JM	02018OP3E256JM	2,107	P1C	277	25.2	91.0	23.902	208-230/460V	
	3600	256JM	02536OP3E256JM	2,242	P1C	251	29.3	91.0	23.902	208-230/460V	
25	1800	284JM	02518OP3E284JM	2,551	P1C	311	30.1	91.7	24.261	208-230/460V	
	3600	284JM	03036OP3E284JM	2,731	P1C	373	34.0	92.4	24.261	208-230/460V	
30	1800	286JM	03018OP3E286JM	2,946	P1C	397	35.6	92.4	25.754	208-230/460V	
	3600	286JM	04036OP3E286JM	3,260	P1C	457	44.8	92.4	25.754	208-230/460V	
40	1800	324JM	04018OP3E324JM	3,354	P1C	495	48.2	93.0	26.431	208-230/460V	
	3600	324JM	05036OP3E324JM	3,971	P1C	523	56.4	93.6	26.431	208-230/460V	
50	1800	326JM	05018OP3E326JM	4,104	P1C	583	60.2	93.0	27.927	208-230/460V	
	3600	326JM	06036OP3E326JM	4,859	P1C	609	70.6	93.0	27.927	208-230/460V	
60	3600	326JM	06036OP3G326JM	4,859	P1C	609	70.6	93.0	27.927	460V	
	1800	364JM	06018OP3E364JM	5,254	P1C	743	70.2	93.6	29.139	208-230/460V	
	1800	364JM	06018OP3G364JM	5,254	P1C	743	70.2	93.6	29.139	460V	
	3600	364JM	07536OP3E364JM	6,226	P1C	805	80.6	94.1	29.139	208-230/460V	
75	3600	364JM	07536OP3G364JM	6,226	P1C	805	80.6	94.1	29.139	460V	
	1800	365JM	07518OP3E365JM	5,989	P1C	935	85.3	94.1	29.139	208-230/460V	
	1800	365JM	07518OP3G365JM	5,989	P1C	935	85.3	94.1	29.139	460V	
100	3600	365JM	10036OP3E365JM	7,005	P1C	935	110	94.1	29.139	208-230/460V	
	3600	365JM	10036OP3G365JM	7,005	P1C	935	110	94.1	29.139	460V	

⚡ ELECTRICAL FEATURES ON PAGE 83

⚙ MECHANICAL FEATURES ON PAGE 84

FRACTIONAL HP

GENERAL PURPOSE

NEMA PREMIUM EFFICIENCY

CRUSHER/DUTY

IEC TRU-METRIC™

PUMP MOTORS

FINITE PURPOSE

ABDN™ MODIFICATIONS

MOTOR TECHNICAL DATA

BISS & SOFT STARTERS

CONTROLS

# CLOSE COUPLED PUMP MOTORS

## ODP – HIGH EFFICIENCY



### “JP” TYPE – ODP – THREE-PHASE

HP	RPM	NEMA Frame	Catalog Number	List Price	Mult. Sym.	Approx. Shipp. Weight Lbs	FL Amps 460V	FL Eff. %	"C" Dimension (in.)	Voltage	Notes
1	1800	143JP	00118OP3E143JP	437	P1C	36	1.41	82.5	17.126	208-230/460V	
1.5	3600	143JP	00156OP3E143JP	453	P1C	32	1.95	82.5	17.126	208-230/460V	
	1800	145JP	00158OP3E145JP	478	P1C	40	1.98	84.0	17.126	208-230/460V	
2	3600	145JP	00236OP3E145JP	498	P1C	43	2.52	84.0	17.126	208-230/460V	
	1800	145JP	00218OP3E145JP	524	P1C	43	2.87	84.0	17.126	208-230/460V	
3	3600	145JP	00336OP3E145JP	565	P1C	49	3.65	84.0	17.126	208-230/460V	
	1800	182JP	00318OP3E182JP	557	P1C	56	3.94	86.5	20.236	208-230/460V	
5	3600	182JP	00536OP3E182JP	669	P1C	57	6.17	86.5	20.236	208-230/460V	
	1800	184JP	00518OP3E184JP	739	P1C	69	6.39	87.5	21.023	208-230/460V	
7.5	3600	184JP	00736OP3E184JP	862	P1C	69	8.97	87.5	21.023	208-230/460V	
	1800	213JP	00718OP3E213JP	946	P1C	85	9.40	88.5	21.240	208-230/460V	
10	3600	213JP	01036OP3E213JP	1,109	P1C	108	11.8	88.5	21.240	208-230/460V	
	1800	215JP	01018OP3E215JP	1,163	P1C	109	12.7	89.5	21.240	208-230/460V	
15	3600	215JP	01536OP3E215JP	1,447	P1C	139	17.1	89.5	21.240	208-230/460V	
	1800	254JP	01518OP3E254JP	1,749	P1C	247	18.7	91.0	25.049	208-230/460V	
20	3600	254JP	02036OP3E254JP	1,815	P1C	205	24.6	90.2	25.049	208-230/460V	
	1800	256JP	02018OP3E256JP	2,107	P1C	277	25.2	91.0	26.782	208-230/460V	
25	3600	256JP	02536OP3E256JP	2,243	P1C	251	29.3	91.0	26.782	208-230/460V	
	1800	284JP	02518OP3E284JP	2,550	P1C	311	30.1	91.7	27.141	208-230/460V	
30	3600	284JP	03036OP3E284JP	2,731	P1C	373	34.0	92.4	27.141	208-230/460V	
	1800	286JP	03018OP3E286JP	2,945	P1C	397	35.6	92.4	28.634	208-230/460V	
40	3600	286JP	04036OP3E286JP	3,260	P1C	457	44.8	92.4	28.634	208-230/460V	
	1800	324JP	04018OP3E324JP	3,354	P1C	495	48.2	93.0	29.311	208-230/460V	
50	3600	324JP	05036OP3E324JP	3,971	P1C	523	56.4	93.6	29.311	208-230/460V	
	3600	324JP	05036OP3G324JP	3,971	P1C	523	56.4	93.6	29.311	460V	
	1800	326JP	05018OP3E326JP	4,105	P1C	583	60.2	93.0	30.807	208-230/460V	
60	3600	326JP	06036OP3E326JP	4,859	P1C	609	70.6	93.0	30.807	208-230/460V	
	3600	326JP	06036OP3G326JP	4,859	P1C	609	70.6	93.0	30.807	460V	
	1800	364JP	06018OP3E364JP	5,254	P1C	743	70.2	93.6	32.019	208-230/460V	
	1800	364JP	06018OP3G364JP	5,254	P1C	743	70.2	93.6	32.019	460V	
75	3600	364JP	07536OP3E364JP	6,226	P1C	805	80.6	94.1	32.019	208-230/460V	
	3600	364JP	07536OP3G364JP	6,226	P1C	805	80.6	94.1	32.019	460V	
	1800	365JP	07518OP3E365JP	5,989	P1C	935	85.3	94.1	32.019	208-230/460V	
	1800	365JP	07518OP3G365JP	5,989	P1C	935	85.3	94.1	32.019	460V	
100	3600	365JP	10036OP3E365JP	7,005	P1C	935	110.0	94.1	32.019	208-230/460V	
	3600	365JP	10036OP3G365JP	7,005	P1C	935	110	94.1	32.019	460V	
	1800	404JP	10018OP3E404JP	7,469	P1C	1037	115	94.1	35.263	208-230/460V	
	1800	404JP	10018OP3G404JP	7,469	P1C	1037	115	94.1	35.263	460V	
125	3600	404JP	12536OP3G404JP	9,185	P1C	1086	132	94.1	35.263	460V	
	1800	405JP	12518OP3G405JP	8,971	P1C	1207	137	94.5	35.263	460V	
150	3600	405JP	15036OP3G405JP	12,106	P1C	1401	159	94.5	35.263	460V	

•ELECTRICAL FEATURES ON PAGE 11  
 •MECHANICAL FEATURES ON PAGE 12

FRACTIONAL HP  
 GENERAL PURPOSE  
 NEMA PREMIUM EFFICIENCY  
 CRUSHER/DUTY  
 IEC TRU-METRIC™  
 PUMP MOTORS  
 FINITE PURPOSE  
 ALDN™ MODIFICATIONS  
 MOTOR TECHNICAL DATA  
 BUSES & SOFT STARTERS  
 CONTROLS



# CLOSE COUPLED PUMP MOTORS

## OD - HIGH EFFICIENCY

FRACTIONAL HP

GENERAL PURPOSE

NEMA PREMIUM EFFICIENCY

CRUSHER/DUTY

IEC TRU-METRIC™

PUMP MOTORS

FINITE PURPOSE

ADDITIONAL MODIFICATIONS

MOTOR TECHNICAL DATA

BISS &amp; SOFT STARTERS

CONTROLS



### OD - VERTICAL MOTORS

HP	RPM	NEMA Frame	Catalog Number	List Price	Mult. Sym.	Approx. Shipp. Weight Lbs	FL Amps 460V	FL Eff. %	"C" Dimension (in.)	Voltage	Notes
1	1800	143JMV	00118OP3E143JMV	513	P1C	36	1.41	82.5	14.756	208-230/460V	
	3600	143JMV	00156OP3E143JMV	542	P1C	32	1.95	82.5	14.756	208-230/460V	
1.5	1800	145JMV	00158OP3E145JMV	554	P1C	40	1.98	84.0	14.756	208-230/460V	
	3600	145JMV	00236OP3E145JMV	573	P1C	43	2.52	84.0	14.756	208-230/460V	
2	1800	145JMV	00218OP3E145JMV	603	P1C	43	2.87	84.0	14.756	208-230/460V	
	3600	145JMV	00336OP3E145JMV	657	P1C	49	3.65	84.0	14.756	208-230/460V	
3	1800	182JMV	00318OP3E182JMV	687	P1C	56	3.94	86.5	15.314	208-230/460V	
	3600	182JMV	00536OP3E182JMV	797	P1C	57	6.17	86.5	15.314	208-230/460V	
5	1800	184JMV	00518OP3E184JMV	875	P1C	69	6.39	87.5	15.314	208-230/460V	
	3600	184JMV	00736OP3E184JMV	993	P1C	69	8.97	87.5	15.314	208-230/460V	
7.5	1800	213JMV	00718OP3E213JMV	1,106	P1C	85	9.40	88.5	18.700	208-230/460V	
	3600	213JMV	01036OP3E213JMV	1,201	P1C	108	11.8	88.5	18.700	208-230/460V	
10	1800	215JMV	01018OP3E215JMV	1,323	P1C	109	12.7	89.5	18.700	208-230/460V	
	3600	215JMV	01536OP3E215JMV	1,617	P1C	139	17.1	89.5	18.700	208-230/460V	
15	3600	254JMV	02036OP3E254JMV	2,092	P1C	205	24.6	90.2	22.169	208-230/460V	
20	3600	256JMV	02536OP3E256JMV	2,518	P1C	251	29.3	91.0	23.902	208-230/460V	
25	3600	284JMV	03036OP3E284JMV	3,082	P1C	373	34.0	92.4	24.261	208-230/460V	
30	3600	286JMV	04036OP3E286JMV	3,611	P1C	457	44.8	92.4	25.754	208-230/460V	
40	3600	324JMV	05036OP3E324JMV	4,394	P1C	523	56.4	93.6	26.431	208-230/460V	

Note: Prices with Drip Cover Included

- ELECTRICAL FEATURES ON PAGE B-35.
- MECHANICAL FEATURES ON PAGE B-84-B-85.



### OD - VERTICAL MOTORS

HP	RPM	NEMA Frame	Catalog Number	List Price	Mult. Sym.	Approx. Shipp. Weight Lbs	FL Amps 460V	FL Eff. %	"C" Dimension (in.)	Voltage	Notes
1.5	3600	143JPV	00156OP3E143JPV	513	P1C	32	1.95	82.5	17.827	208-230/460V	
2	3600	145JPV	00236OP3E145JPV	559	P1C	43	2.52	84.0	17.827	208-230/460V	
3	3600	145JPV	00336OP3E145JPV	629	P1C	49	3.65	84.0	17.827	208-230/460V	
5	3600	182JPV	00536OP3E182JPV	729	P1C	57	6.17	86.5	22.400	208-230/460V	
7.5	3600	184JPV	00736OP3E184JPV	993	P1C	69	9.0	87.5	22.400	208-230/460V	
10	3600	213JPV	01036OP3E213JPV	1,273	P1C	108	11.8	88.5	22.617	208-230/460V	
15	3600	215JPV	01536OP3E215JPV	1,617	P1C	139	17.1	89.5	22.617	208-230/460V	
20	3600	254JPV	02036OP3E254JPV	2,092	P1C	205	24.6	90.2	26.387	208-230/460V	
25	3600	256JPV	02536OP3E256JPV	2,518	P1C	251	29.3	91.0	26.782	208-230/460V	
30	3600	284JPV	03036OP3E284JPV	3,082	P1C	373	34.0	92.4	28.755	208-230/460V	
40	3600	286JPV	04036OP3E286JPV	3,611	P1C	457	44.8	92.4	30.248	208-230/460V	

Note: Prices with Drip Cover Included

- ELECTRICAL FEATURES ON PAGE B-36.
- MECHANICAL FEATURES ON PAGE B-84-B-85.