

## Fig. 4B - Pipe Clamp for Sway Bracing

**Size Range** — 3/4" thru 8" pipe.

**Material** — Carbon Steel

**Function** — For bracing pipe against sway and seismic disturbance.

**Features** — This product's design incorporates concentric loading of the "brace pipe", connection components and fasteners which is critical to the performance of seismic bracing assemblies.

**Approvals** — Underwriters Laboratories Listed in the USA (**UL**) and Canada (**cUL**). Included in our Seismic Restraints Catalog approved by the State of California Office of Statewide Health Planning and Development (**OSHPD**).

**Finish** — Plain

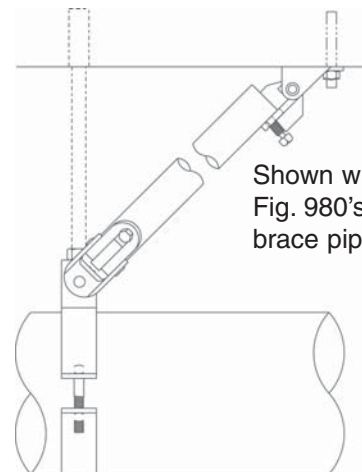
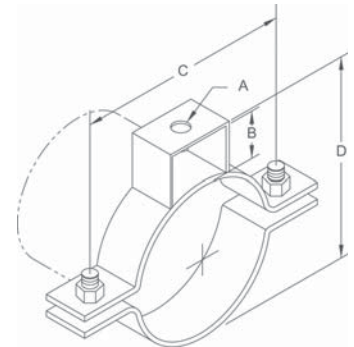
**Note** — Available in Electro-Galvanized and HDG finish or Stainless Steel materials.

**Order By** — Figure number, pipe size and finish.

**Installation Instructions** — The Fig. 4B is the "braced pipe" attachment component of a longitudinal or lateral sway brace assembly. It is intended to be combined with the "bracing pipe" and TOLCO transitional and structural attachment component(s) to form a complete bracing assembly. NFPA 13 and/or OSHPD guidelines should be followed.

**To Install** — Place the Fig. 4B over the pipe to be braced. Attach other TOLCO transitional fitting, Fig. 909, 910 or 980. Tighten bolts and nuts. Transitional fitting attachment can pivot for adjustment to proper brace angle.

Component of State of California OSHPD Approved Seismic Restraints System



Shown with two TOLCO® Fig. 980's and Schedule 40 brace pipe.

Fig. 4B - Hanger/Longitudinal Brace

TOLCO® brand bracing components are designed to be compatible **ONLY** with other TOLCO® brand bracing components, resulting in a Listed seismic bracing assembly. **DISCLAIMER** — NIBCO does **NOT** warrant against the failure of TOLCO® brand bracing components, in the instance that such TOLCO® brand bracing components are used in combination with products, parts or systems which are not manufactured or sold under the TOLCO® brand. NIBCO shall **NOT** be liable under any circumstance for any direct or indirect, incidental or consequential damages of any kind, including but not limited to loss of business or profit, where non-TOLCO brand bracing components have been, or are used.

### Dimensions • Weights

Pipe Sizes	Rod Size A	B	C	D	Bolt Size	Max. Design Load Lbs.	Approx. Wt./100
3/4	3/8	1	27/8	25/8	5/16	330	56
1	3/8	1	3 1/4	2 15/16	5/16	330	60
1 1/4	3/8	1	3 9/16	3 1/4	5/16	330	74
1 1/2	3/8	1	3 13/16	3 7/16	5/16	330	79
2	3/8	1 1/2	5 1/8	4 5/8	5/16	440	156
2 1/2	1/2	1 3/4	5 5/8	5 3/8	3/8	440	176
3	1/2	1 7/8	6 3/4	6 1/8	3/8	660	198
3 1/2	1/2	2	7 1/4	6 3/4	3/8	660	219
4	5/8	2	8 5/8	7 1/4	1/2	800	288
5	5/8	2	9 7/8	8 5/16	5/8	980	390
6	3/4	2 1/8	10 15/16	9 1/2	5/8	980	448
8	7/8	2 1/8	13 7/16	11 1/2	3/4	1200	691