

## Fig. 323 - Adjustable Support Roller

**Size Range** — 2" thru 10" pipe

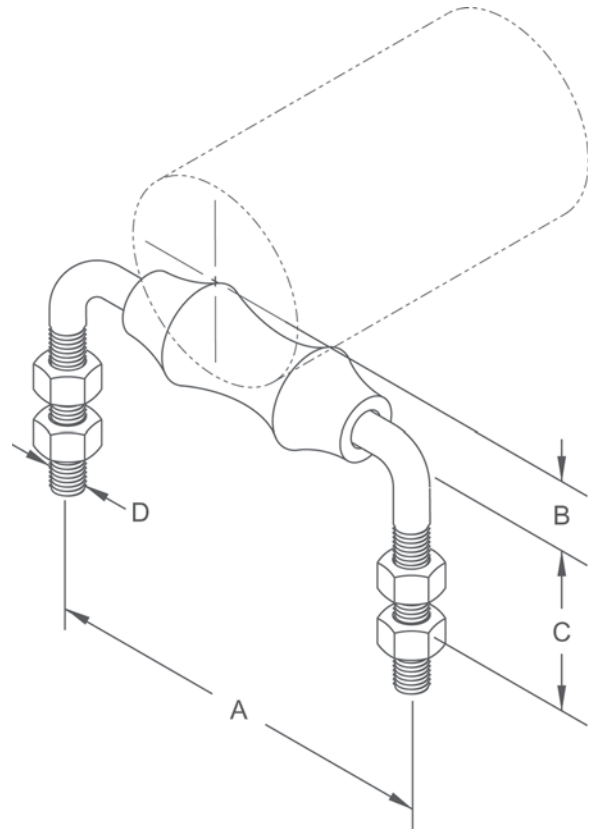
**Material** — Cast iron and carbon steel axle

**Function** — For supporting pipe where expansion may occur due to thermal movement. Used when ceiling support is impractical.

**Note** — When pipe line is insulated, total outside diameter of pipe and covering should be used to determine size of hanger; also see Figs. 260-1 to 265-4.

**Finish** — Plain

**Note** — Available in Electro-Galvanized and HDG finish.



### Dimensions • Weights

Pipe Size	A	B	C	Rod Size D	Max. Adj.	Max. Rec. Load Lbs.	Approx. Wt./100
2	4 $\frac{1}{4}$	1 $\frac{9}{16}$	3 $\frac{3}{4}$	3/8	1 $\frac{3}{4}$	450	65
2 $\frac{1}{2}$	4 $\frac{1}{2}$	1 $\frac{7}{8}$	4 $\frac{1}{8}$	1/2	2 $\frac{1}{4}$	500	130
3	5 $\frac{3}{8}$	2 $\frac{3}{16}$	4 $\frac{1}{8}$	1/2	2 $\frac{1}{4}$	520	147
3 $\frac{1}{2}$	5 $\frac{3}{4}$	2 $\frac{1}{2}$	4 $\frac{1}{8}$	1/2	2 $\frac{1}{4}$	560	159
4	6 $\frac{5}{8}$	2 $\frac{15}{16}$	5 $\frac{3}{8}$	1/2	3	560	240
5	7 $\frac{3}{4}$	3 $\frac{7}{16}$	5 $\frac{3}{8}$	5/8	3	560	305
6	8 $\frac{5}{8}$	4 $\frac{1}{16}$	6 $\frac{1}{8}$	3/4	3 $\frac{1}{2}$	800	465
8	11 $\frac{1}{4}$	5 $\frac{1}{8}$	7 $\frac{1}{8}$	7/8	4	1010	712
10	13 $\frac{1}{2}$	6 $\frac{3}{8}$	7 $\frac{1}{8}$	7/8	4	1290	955