

## Fig. 322 - Pipe Roll with Sockets

**Size Range** — 1" thru 30" pipe

**Material** — Cast iron and carbon steel axle

**Function** — For supporting pipe where expansion may occur due to thermal movement. Double rod design provides support for greater loads.

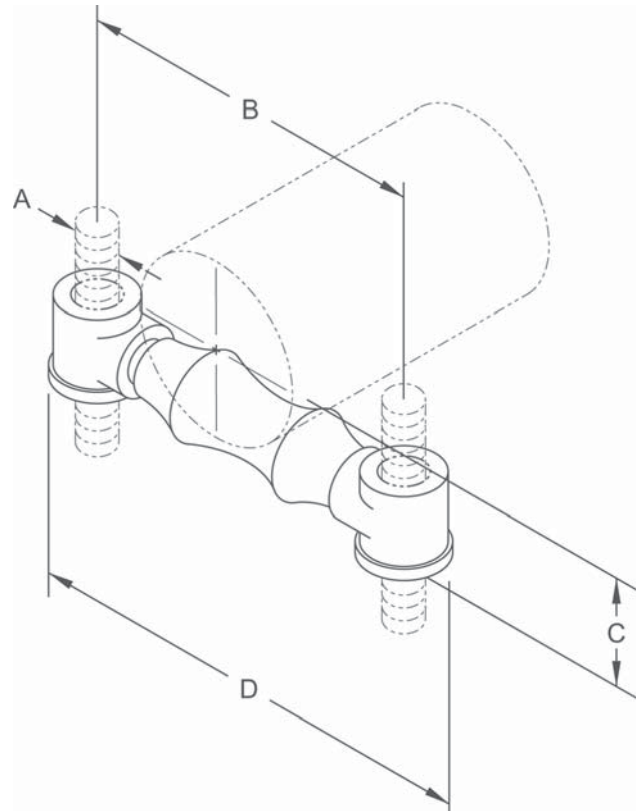
**Approvals** — Conforms to Federal Specification WW-H-171E, Type 42, 2" thru 24", and Manufacturers Standardization Society SP-69, Type 41

**Note** — When pipe line is insulated, total outside diameter of pipe and covering should be used to determine size of hanger; also see Figs. 260-1 to 265-4.

**Finish** — Plain

**Note** — Available in Electro-Galvanized and HDG finish.

**Order By** — Figure number, pipe size and finish



**Dimensions • Weights**

Pipe Size	Rod Size A	B*	C	D	Max. Rec. Load Lbs.	Approx. Wt./100
1	3/8	3¼	1 <sup>21</sup> / <sub>32</sub>	4½	600	45
1¼	3/8	3¾	1 <sup>13</sup> / <sub>16</sub>	4½	600	48
1½	3/8	3¾	1 <sup>15</sup> / <sub>16</sub>	4¾	600	51
2	3/8	4 <sup>1</sup> / <sub>16</sub>	2¼	5 <sup>7</sup> / <sub>16</sub>	600	58
2½	1/2	4 <sup>7</sup> / <sub>8</sub>	2 <sup>5</sup> / <sub>8</sub>	6¼	660	123
3	1/2	5½	2 <sup>7</sup> / <sub>8</sub>	6 <sup>7</sup> / <sub>8</sub>	700	133
3½	1/2	6	3¼	7 <sup>3</sup> / <sub>8</sub>	750	146
4	5/8	6 <sup>7</sup> / <sub>8</sub>	3¾	8 <sup>7</sup> / <sub>16</sub>	750	230
5	5/8	8¼	4¼	9 <sup>9</sup> / <sub>16</sub>	750	285
6	3/4	9 <sup>5</sup> / <sub>8</sub>	5½	11 <sup>9</sup> / <sub>16</sub>	1070	460
8	7/8	11 <sup>13</sup> / <sub>16</sub>	6 <sup>11</sup> / <sub>32</sub>	14	1350	720
10	7/8	14	7 <sup>9</sup> / <sub>16</sub>	16 <sup>3</sup> / <sub>16</sub>	1730	1100
12	7/8	16	8 <sup>11</sup> / <sub>16</sub>	18 <sup>3</sup> / <sub>16</sub>	2400	1630
14	1	18	9 <sup>21</sup> / <sub>32</sub>	20 <sup>11</sup> / <sub>16</sub>	3130	2150
16	1¼	20¼	10¾	23	3970	2850
18	1¼	22½	11 <sup>29</sup> / <sub>32</sub>	25¼	4200	3650
20	1¼	25	12 <sup>15</sup> / <sub>16</sub>	26¼	4550	4650
24	1½	28 <sup>5</sup> / <sub>8</sub>	16 <sup>13</sup> / <sub>32</sub>	31 <sup>7</sup> / <sub>8</sub>	6160	6200
30	1½	34½	19¾	39 <sup>5</sup> / <sub>8</sub>	7290	12500

\* Due to the inconsistent dimensions associated with cast parts, please contact the factory if the "B" dimension is critical for installation.