

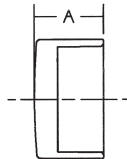
# ABS & PVC-DWV Fittings

5800 Series - ABS/4800 Series PVC

## ADAPTERS (Continued)

### CAPS

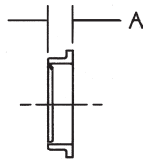
5817 4817



#### Cap (Hub)

NOM. SIZE	ABS APPROX. NET WT./LBS.	PVC APPROX. NET WT./LBS.	DIM. A INCHES
* 1 <sup>1</sup> / <sub>4</sub>	.074	N/A	7/8
1 <sup>1</sup> / <sub>2</sub>	.089	.115	7/8
2	.118	.169	3 <sup>1</sup> / <sub>32</sub>
3	.317	.469	1 <sup>23</sup> / <sub>32</sub>
4	.568	.789	2
6	1.150	3.755	3 <sup>1</sup> / <sub>16</sub>
† 8	N/A	4.056	6 <sup>3</sup> / <sub>16</sub>

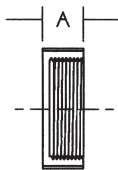
5817-P



#### Test Cap (Polystyrene)

NOM. SIZE	APPROX. NET WT./LBS.	DIM. A INCHES
1 <sup>1</sup> / <sub>2</sub>	.009	1/4
2	.013	1/4
3	.026	5/16
4	.045	3/8

5827

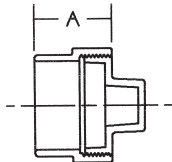


#### CAP (FIPT)

NOM. SIZE	ABS APPROX. NET WT./LBS.	DIM. A INCHES
1 <sup>1</sup> / <sub>2</sub>	.062	29/32
2	.082	15/16
3	.245	1 <sup>7</sup> / <sub>16</sub>

### CLEANOUTS

5816 4816



#### Cleanout Adapter (Spg x Cleanout w/Plug)

NOM. SIZE	ABS APPROX. NET WT./LBS.	PVC APPROX. NET WT./LBS.	DIM. A INCHES
1 <sup>1</sup> / <sub>2</sub>	.117	.160	1 <sup>21</sup> / <sub>32</sub>
2	.154	.215	1 <sup>25</sup> / <sub>32</sub>
3	.486	.679	2 <sup>29</sup> / <sub>32</sub>
4	.822	1.094	3 <sup>5</sup> / <sub>16</sub>
6	1.825	2.564	4 <sup>25</sup> / <sub>32</sub>

\* Available in ABS only

† Available in PVC only

Do not use or test the products in this catalog with compressed air or other gasses.