

Fig. 1U "Ultra" Clevis Hanger

APPLICATIONS

- Used for suspension of piping systems

FEATURES

- Fast, easy, snap open and closed installation
- Strong light weight design
- Flared edges ease installation for all pipe types and protect plastic pipe from abrasion
- Clevis bottom locks in place to prevent swinging
- Clevis bottom will support weight of pipe while in open position
- Patent Pending

MATERIALS & CONSTRUCTION

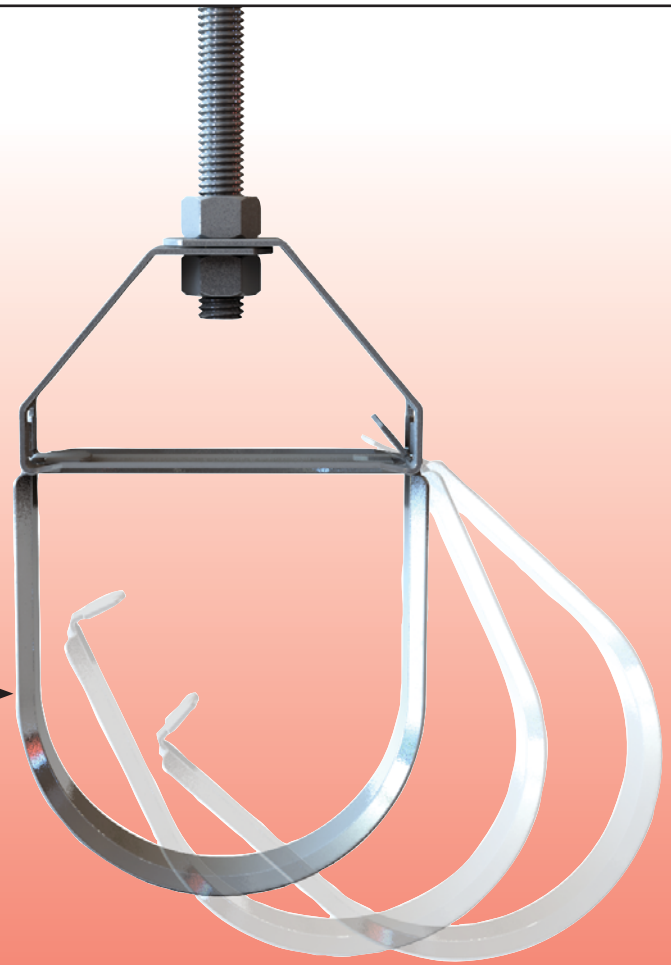
- Carbon steel - Mil. Galvanized to G90 specifications

Fig. 1U

PATENT
PENDING



Snap open and closed design makes the Fig. 1U fast and easy to install



Set it in place.



Push it up.



Press it in.

Fig. 1U - "Ultra" Clevis Hanger

Size Range — Size 1/2" thru 4" pipe.

Material — Carbon Steel, Mil. Galvanized to G90.

Function — Recommended for the suspension of piping systems.

Features —

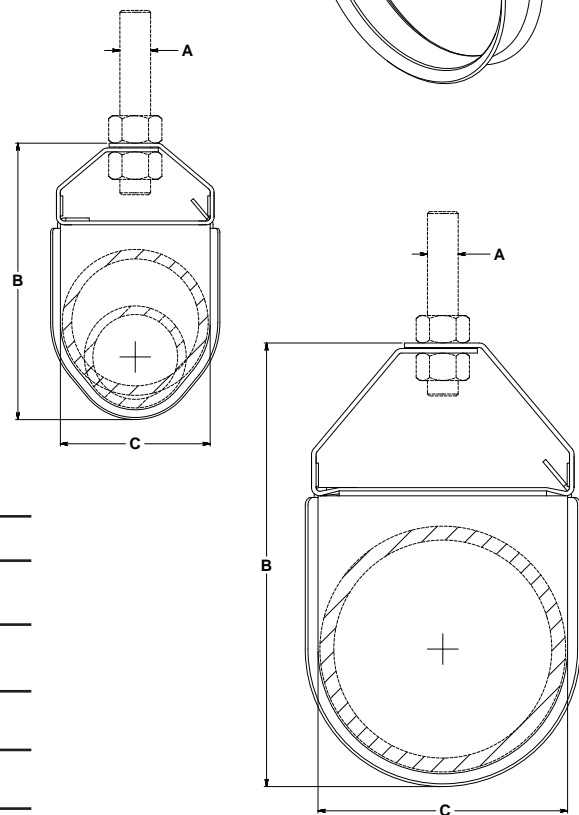
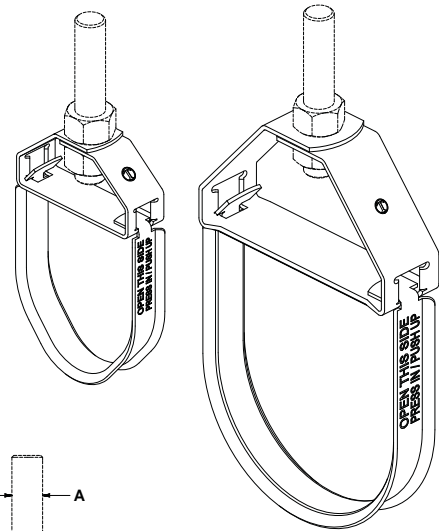
- Fast, easy, snap open and closed installation
- Strong lightweight design
- Flared edges ease installation for all pipe types and protect CPVC plastic pipe from abrasion
- Clevis bottom locks in place to prevent swinging

Approvals — Conforms to Manufacturers Standardization Society SP-58, Type1.

Maximum Temperature — 650°F

Finish — Mil. Galvanized

Order By — Figure number and pipe size



Dimensions • Weights

Pipe Size	Rod Size A	B	C	Max. Rec. Load Lbs.	Approx. Wt./100
1/2 thru 1	3/8	3 ¹ / ₁₆	1 ⁹ / ₁₆	200	8
1 ¹ / ₄ thru 2	3/8	4 ¹ / ₂	2 ⁷ / ₈	250	18
2 ¹ / ₂	1/2	5 ³ / ₈	2 ¹⁵ / ₁₆	350	36
3	1/2	6 ³ / ₁₆	3 ⁹ / ₁₆	350	44
3 ¹ / ₂	1/2	7 ¹ / ₄	4 ¹ / ₁₆	350	50
4	1/2	7 ⁵ / ₈	4 ⁹ / ₁₆	400	55

Load Comparison Chart

Pipe Size	Max. Spacing per MSS	Sch. 40 Wt./Ft.	Sch. 80 Wt./Ft.	Water Wt./Ft. Sch. 40	Water Wt./Ft. Sch. 80	Sch. 40 Total Supported Load	Sch. 80 Total Supported Load	Fig. 1U Load Rating w/Safety Factor 3.5
1/2	7	0.85	1.09	0.13	0.10	6.87	8.32	200
3/4	7	1.13	1.47	0.23	0.19	9.52	11.61	200
1	7	1.68	2.17	0.37	0.31	14.36	17.37	200
1-1/4	7	2.27	3.00	0.65	0.56	20.43	24.86	250
1-1/2	9	2.72	3.63	0.88	0.77	32.39	39.56	250
2	10	3.65	5.02	1.45	1.28	51.04	63.01	250
2-1/2	11	5.79	7.66	2.07	1.83	86.48	104.43	350
3	12	7.57	10.25	3.20	2.86	129.24	157.32	350
3-1/2	13	9.11	12.51	4.28	3.85	174.07	212.68	350
4	14	10.79	14.98	5.51	4.98	228.20	279.44	400