

Fig. 1C.I. - A.W.W.A. Clevis Hanger

Size Range — Size 4" thru 24" pipe.

Material — Carbon Steel

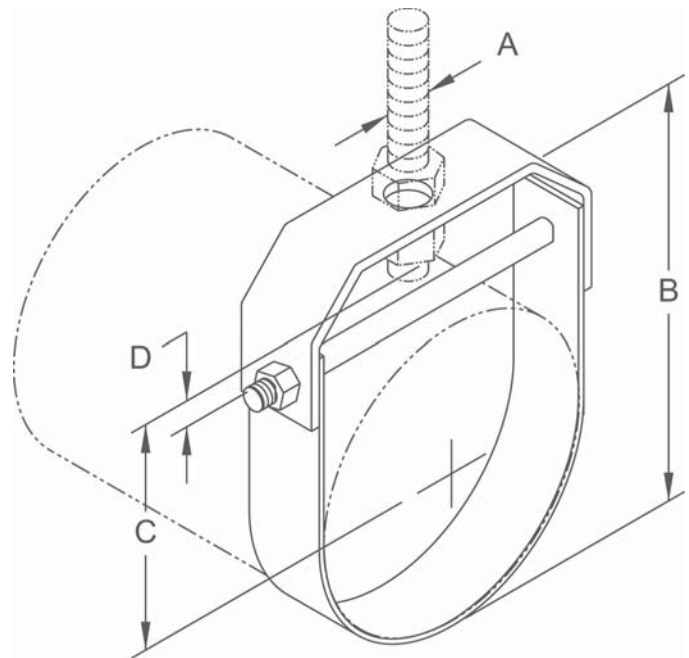
Function — For the suspension of flanged or bell and spigot A.W.W.A. cast iron or ductile iron pipe. The O.D. of the A.W.W.A. iron pipe is shown in the data table.

Approvals — Conforms to Federal Specification WW-H-171E, Type 1 and Manufacturers Standardization Society SP-69, Type 1.

Finish — Plain

Note — Available in Electro-Galvanized and HDG finish or Stainless Steel.

Order By — Figure number, pipe size and finish



Dimensions • Weights

Pipe Size	Rod Size A	Pipe O.D.	B	C	D	Max. Rec. Load Lbs.	Approx. Wt./100
4	5/8	4.80	8	4 ³ / ₄	1 ⁵ / ₈	1430	213
6	3/4	6.90	10 ³ / ₁₆	5 ³ / ₄	1 ³ / ₄	1940	430
8	3/4	9.05	12 ⁵ / ₈	7	1 ³ / ₄	2000	664
10	7/8	11.10	15 ⁷ / ₁₆	8 ⁵ / ₈	2 ¹ / ₄	3600	940
*12	7/8	13.20	16 ⁷ / ₈	9	2 ¹ / ₄	3800	1217
*14	1	15.30	20 ⁷ / ₈	11 ³ / ₄	2 ¹ / ₂	4200	1533
*16	1	17.40	23 ¹¹ / ₁₆	13 ¹ / ₂	3 ³ / ₈	4600	1925
*18	1	19.50	26 ¹ / ₁₆	14 ⁷ / ₈	3 ³ / ₈	4800	2223
*20	1 ¹ / ₄	21.60	29 ¹ / ₁₆	16 ³ / ₈	3 ³ / ₄	4800	4182
*24	1 ¹ / ₄	25.80	33 ³ / ₈	18 ⁵ / ₈	4	4800	5460

*Furnished with pipe spacer to support maximum load rating