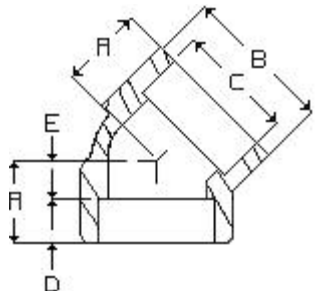


Penn Machine

Class 9000 Socketweld 45

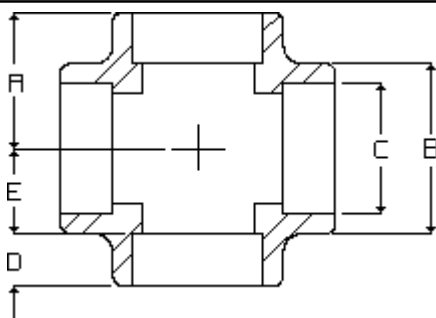


PENN CATALOG F2002 FIG NO. 19003
ASME-B16.11-2001

NOMINAL PIPE SIZE	1/2"	3/4"	1"	1-1/4"	1-1/2"	2"	2-1/2"	3"
"A"	1-1/8	1-5/16	1-3/8	1-11/16	1-25/32	2-1/16	2-1/2	3-1/8
"B"	1-13/16	2-3/16	2-1/2	3	3-5/16	4	4-3/4	5-7/8
"C"	.859	1.071	1.335	1.682	1.922	2.410	2.910	3.536
"D"	1/2	9/16	9/16	13/16	25/32	15/16	1	1-1/4
"E"	5/8	3/4	13/16	7/8	1	1-1/8	1-1/2	1-7/8
APPROX. Wt.	1.41	2.28	3.04	4.52	6.51	10.44	18.75	30.72

Penn Machine

Class 9000 Socketweld Cross



PENN CATALOG F2002 FIG NO. 19004
ASME-B16.11-2001

[Click here for the reducing fitting correct ordering practice](#)

NOMINAL PIPE SIZE	1/2"	3/4"	1"	1-1/4"	1-1/2"	2"	2-1/2"	3"
"A"	1-1/2	1-3/4	2	2-3/8	2-1/2	3-1/4	3-3/4	4-3/16
"B"	1-13/16	2-3/16	2-1/2	3	3-5/16	4	4-3/4	5-7/8
"C"	.859	1.071	1.335	1.682	1.922	2.410	2.910	3.536
"D"	1/2	5/8	3/4	1	1	1-1/8	1-3/8	1-5/16
"E"	1	1-1/8	1-1/4	1-3/8	1-1/2	2-1/8	2-3/8	2-7/8
APPROX. Wt.	3.00	4.84	6.70	9.31	12.62	19.01	31.57	50.83

[Fitting catalog](#) | [Product catalog](#) | [Request quote/information](#) | [Home](#)

Web site created by Penn Machine. Send questions or comments to [James Friant](#).