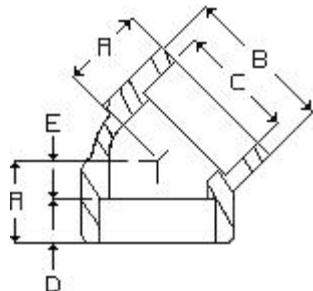


Penn Machine

Class 6000 Socketweld 45

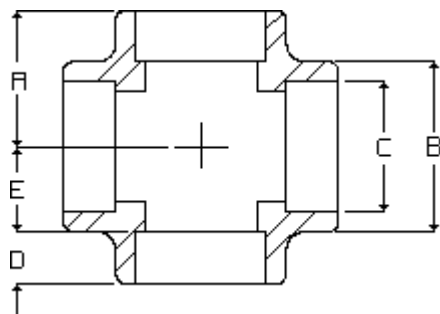


PENN CATALOG F2002 FIG NO. 16003
ASME-B16.11-2001

NOMINAL PIPE SIZE	1/8"	1/4"	3/8"	1/2"	3/4"	1"	1-1/4"	1-1/2"	2"	2-1/2"	3"	4"
"A"	3/4	3/4	7/8	1	1-1/8	1-5/16	1-3/8	1-11/16	1-25/32	2-1/16	2-1/2	3-1/8
"B"	1-1/16	1-1/16	1-5/16	1-1/2	1-13/16	2-3/16	2-1/2	3	3-5/16	4	4-3/4	5-7/8
"C"	.426	.560	.693	.859	1.071	1.335	1.682	1.922	2.410	2.910	3.536	4.545
"D"	7/16	7/16	7/16	1/2	9/16	5/8	9/16	11/16	21/32	13/16	1-1/8	1-1/2
"E"	5/16	5/16	7/16	1/2	9/16	11/16	13/16	1	1-1/8	1-1/4	1-3/8	1-5/8
APPROX. WEIGHT	.25	.24	.48	.74	1.25	2.03	2.17	4.36	5.11	8.37	12.02	21.76

Penn Machine

Class 6000 Socketweld Cross



PENN CATALOG F2002 FIG NO. 16004
ASME-B16.11-2001

[Click here for the reducing fitting correct ordering practice](#)

NOMINAL PIPE SIZE	1/8"	1/4"	3/8"	1/2"	3/4"	1"	1-1/4"	1-1/2"	2"	2-1/2"	3"	4"
"A"	31/32	31/32	1-1/8	1-5/16	1-1/2	1-3/4	2	2-3/8	2-1/2	3-1/4	3-3/4	4-3/16
"B"	1-1/16	1-1/16	1-5/16	1-1/2	1-13/16	2-3/16	2-1/2	3	3-5/16	4	4-3/4	5-7/8
"C"	.426	.560	.693	.859	1.071	1.335	1.682	1.922	2.410	2.910	3.536	4.545
"D"	17/32	7/16	1/2	9/16	5/8	11/16	3/4	7/8	7/8	1	1-1/4	9/16
"E"	7/16	17/32	5/8	3/4	7/8	1-1/16	1-1/4	1-1/2	1-5/8	2-1/4	2-1/2	2-5/8
APPROX. WEIGHT	.50	1.12	1.55	1.35	2.29	3.67	5.20	9.26	9.03	18.28	29.07	38.28

Web site created by Penn Machine. Send questions or comments to [James Friant](#).