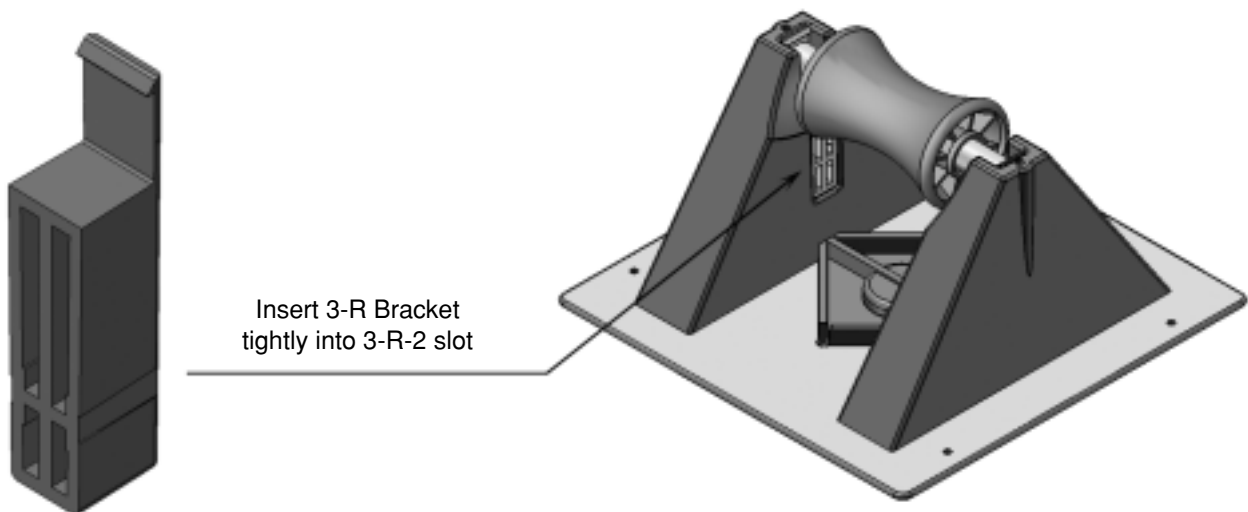


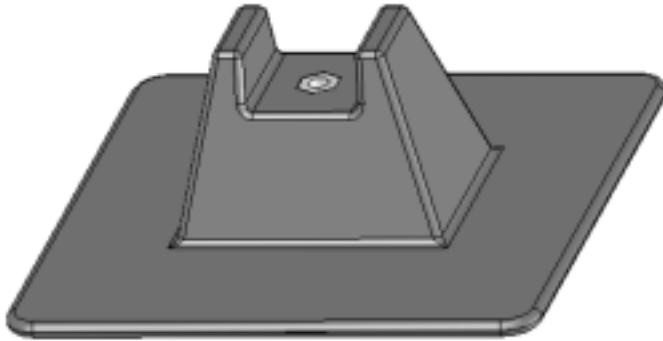
Specification and Data Sheet

3-R Bracket

1. **Product Name:** Model 3-R Bracket.
2. **Manufacturer:** MIRO INDUSTRIES, INC., 2700 South 900 West, Salt Lake City, Utah 84119 Phone (800) 768-6978 Fax (800) 440-7958
3. **Product Description:** MIRO Industries 3-R Bracket is designed to be inserted into the Model 3-R-2 to raise the roller to give a height clearance of 4". The 3-R Brackets are sold individually to be inserted into existing 3-R-2 roof supports or you can buy the Model 3-R-4 with the 3-R Bracket already inserted by the manufacturer.
4. **Installation:** Pull polycarbonate roller and rod out of the 3-R-2 and insert one 3-R Bracket into each slot. The 3-R Bracket should be flush with the inner wall dimension and bottom trough. Replace the polycarbonate roller and rod to fit on top of the new inserts.
5. **Availability:** The 3-R Brackets are marketed throughout the United States and Canada through representatives and distributors.
6. **Maintenance:** Normally maintenance is not required. Semi-annual inspection is required to check pipestand position and set pipe alignment, weight distribution, and improper installation which may cause pipestand damage or failure.
11. **Technical Services:** Please call MIRO INDUSTRIES, INC.: (800) 768-6978.
www.miroind.com for technical information and for graphic and for CAD drawing downloads.



Specification and Data Sheet **M8UFS**



**Pipe Support
Model No. M8UFS**

BASE MATERIAL

Polycarbonate Plastic (UV Resistant)

SIZE

The deck base is 8" x 8" with a height of 3". Coupler housing accepts 3/8" – 16" all-thread. Structural housing accepts max 1-5/8" x 1-5/8" UNI STRUT®.

MAX PIPE CLEARANCE

M8UFS elevates pipe above the roof membrane from a low of 2" up to 12".

MAX LOAD WEIGHT

Maximum load weight may not exceed 200 lbs. per support.

SPACING

Manufacturer's recommended spacing should not exceed 10 foot centers depending upon the load. Do not exceed 200 lbs. load weight and make certain each support is adjusted to even the load with all other supports.

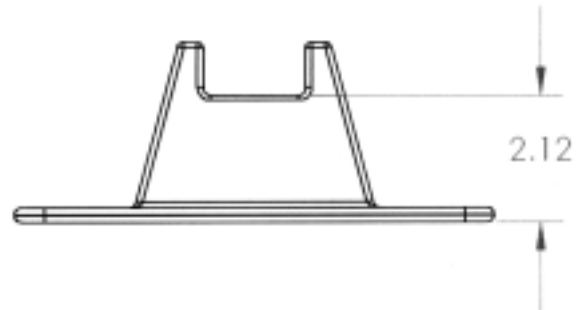
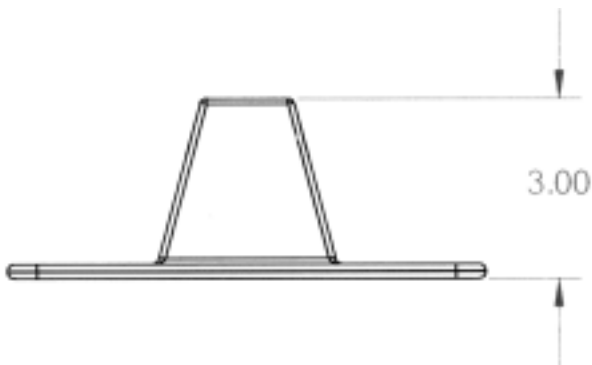
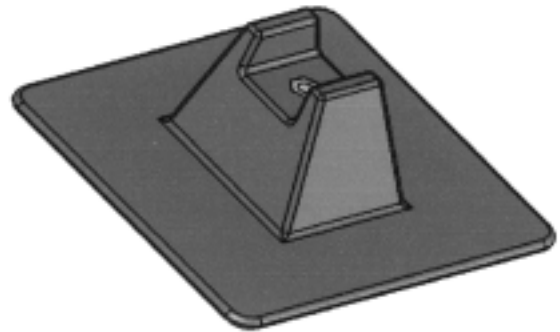
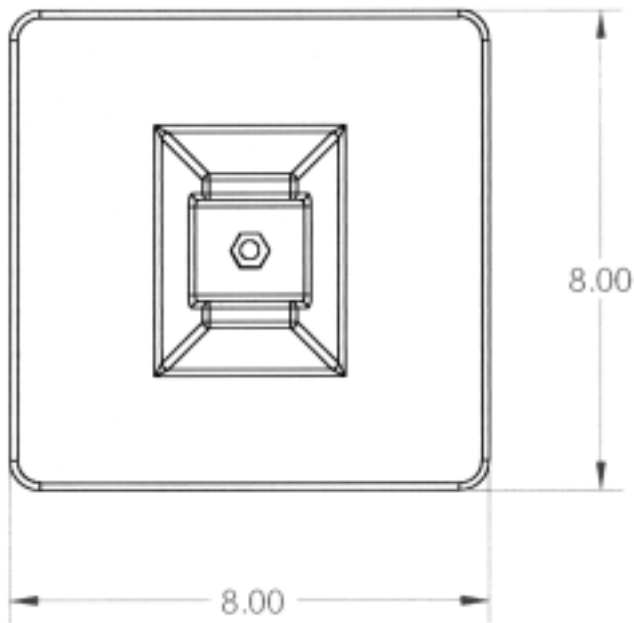
INSTALLATION PROCEDURES

1. All Uni-Flex systems are shipped un-assembled (field assembly required).
2. Remove hardware from box and use all other necessary components to build a suitable support.
3. Clear all loose gravel and aggregate away from roof top support site.
4. Place Uni-Flex base on a walk pad or slip pad for added protection.
5. Make sure to center each unit, and make necessary adjustments so that each unit carries an even load. Load not to exceed 200 lbs per unit.

This document, attachments, and all of the information therein are the property of MIRO Industries, Inc. The information contained is loaned, subject to return upon demand, and is not to be used directly or indirectly in any way detrimental to our interest. Further, the information contained therein shall not be used, in whole or in part, except when allowed by written authorization from MIRO Industries, Inc.

Copyright MIRO Industries, Inc. 2003.

M8UFS



This document, attachments, and all of the information therein are the property of MIRO Industries, Inc. The information contained is loaned, subject to return upon demand, and is not to be used directly or indirectly in any way detrimental to our interest. Further, the information contained therein shall not be used, in whole or in part, except when allowed by written authorization from MIRO Industries, Inc.

Copyright MIRO Industries, Inc. 2003.

8-Uni Flex Support



NAME
PAN HEAD SCREW (SS)
3/8" – 16

MATERIAL
304 Stainless Steel-ASTM #240/480

ASSEMBLY REQUIREMENTS
All hardware requires 8 foot pounds of torque when tightening.

MODEL PAN HEAD SCREW

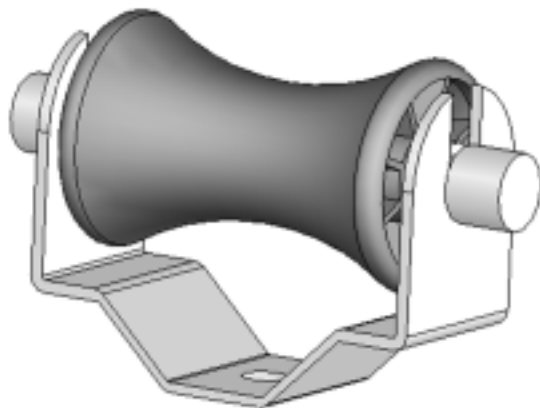


NAME
OCTAGON WASHER (SS)

MATERIAL
14ga-304 Stainless Steel-ASTM #240/480
Hole is 3/8" O.D.

*This washer is required when assembling UNI STRUT® to the UNI FLEX base.

MODEL OCTAGON WASHER



NAME
MIRO ROLLER BRACKET SUPPORT

MATERIAL
The 3" roller is made of polycarbonate plastic. The roller rod is a 6/6 nylon. All other metal is .125 AL 5052-H32 ASTM #B209/QQ-A-25018

MAX LOAD
Maximum load not to exceed 100 lbs. and 12" above roof.

ASSEMBLY REQUIREMENTS
All hardware requires 8 foot pounds of torque when tightening.

This document, attachments, and all of the information therein are the property of MIRO Industries, Inc. The information contained is loaned, subject to return upon demand, and is not to be used directly or indirectly in any way detrimental to our interest. Further, the information contained therein shall not be used, in whole or in part, except when allowed by written authorization from MIRO Industries, Inc.

Copyright MIRO Industries, Inc. 2003.

MODEL M-RBS



NAME
STANDARD 3/8"-16 ALL-THREAD

MATERIAL
Type 304 Stainless Steel ASTM #240/480

MODEL 3/8" All-Thread (SS)



NAME
UNI STRUT®

MATERIAL

<u>Channel</u>	<u>Width</u>	<u>Height</u>	<u>Steel Gauge</u>
P1000	1 ⁵ / ₈	1 ⁵ / ₈	12 ga
P1100	1 ⁵ / ₈	1 ⁵ / ₈	14 ga
P2000	1 ⁵ / ₈	1 ⁵ / ₈	16 ga
P3000	1 ⁵ / ₈	1 ³ / ₈	12 ga
P3300	1 ⁵ / ₈	7/ ₈	12 ga
P4000	1 ⁵ / ₈	1 ³ / ₁₆	16 ga

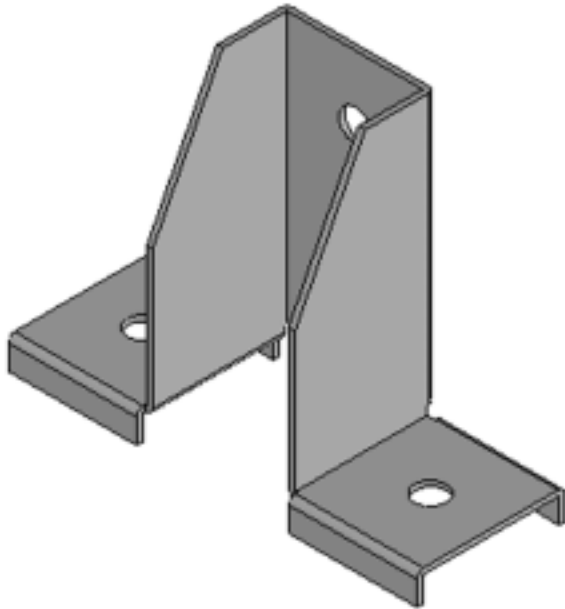
All material is hot dip galvanized.
CRS-ASTM #A653 GR-33

MAX LOAD
Refer to load calculations at
www.miroind or www.unistrut.com

MODEL Uni Strut®

This document, attachments, and all of the information therein are the property of MIRO Industries, Inc. The information contained is loaned, subject to return upon demand, and is not to be used directly or indirectly in any way detrimental to our interest. Further, the information contained therein shall not be used, in whole or in part, except when allowed by written authorization from MIRO Industries, Inc.

Copyright MIRO Industries, Inc. 2003.



NAME
MIRO STRUT SUPPORT

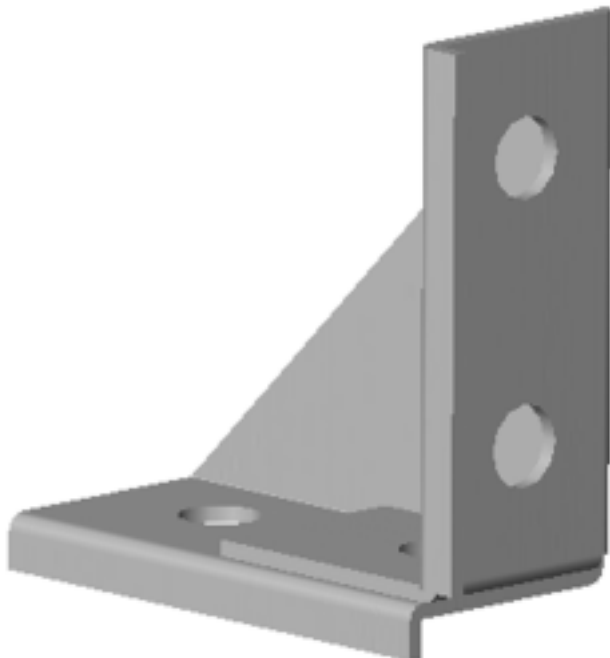
MATERIAL
14ga CRS-ASTM #A-108

SIZE
Both horizontal and vertical brackets accept a maximum 1-5/8" UNI STRUT. Holes are 3/8" O.D.

MAX LOAD
Maximum load not to exceed 400 lbs. per unit.

ASSEMBLY REQUIREMENTS
All hardware requires 8 foot pounds of torque when tightening. Ensure that all strut is aligned in bracket properly.

MODEL M-SS



NAME
MIRO CORNER BRACKET

MATERIAL
14ga CRS-ASTM #A-108

SIZE
Bracket accepts 1-5/8" UNI STRUT. Holes are 3/8" O.D.

MAX LOAD
Maximum load not to exceed 400 lbs. per unit.

ASSEMBLY REQUIREMENTS
All hardware requires 8 foot pounds of torque when tightening. Ensure that all strut is aligned with corner bracket.

This document, attachments, and all of the information therein are the property of MIRO Industries, Inc. The information contained is loaned, subject to return upon demand, and is not to be used directly or indirectly in any way detrimental to our interest. Further, the information contained therein shall not be used, in whole or in part, except when allowed by written authorization from MIRO Industries, Inc.

Copyright MIRO Industries, Inc. 2003.

MODEL M-CB