



VST-39/43/50/55-TN

Articulated/Telescopic Aerial Lift



DEMAND BETTER

Unitrol Bucket Controls



Single- or dual-hydraulic tool outlets

Optional Platform Mounted jib and winch



180° Hydraulic Platform Rotation

- Working Height: Up to 57' 7"
- Side Reach: Up to 30' 7"
- Platform Capacity: 500 lbs.



For more information about the VST-39/43/50/55-TN or any of the other outstanding VERSALIFT machines, contact your authorized VERSALIFT Distributor or call 1.800.825.1085.



VST-39/43/50/55-TN

Articulated/Telescopic Aerial Lift

GENERAL SPECIFICATIONS

Based on 40" frame

	VST-39-TN	VST-43-TN	VST-50-TN	VST-55-TN
Horizontal reach	26'-0"	30'-0"	30'-7"	30'-2"
Max platform capacity	500 lbs	500 lbs	500 lbs	500 lbs
Max platform size	36 x 60	36 x 60	36 x 60	36 x 60
Max jib capacity	200 lbs	200 lbs	200 lbs	200 lbs
Bottom of platform	39'-5"	43'-5"	49'-11"	54'-7"
Working height	44'-5"	48'-5"	54'-11"	59'-7"
Stowed travel height	10'-6"	10'-6"	11'-0"	11'-6"

BOOM ACTION

Outer/Inner boom articulation	-25 to +85°	-25 to +85°	-25 to +85°	-25 to +85°
Inner boom extension	79"	103"	103"	53"
Lower boom articulation	87°	87°	84°	84°
Rotation	360°	360°	360°	360°

VEHICLE REQUIREMENTS

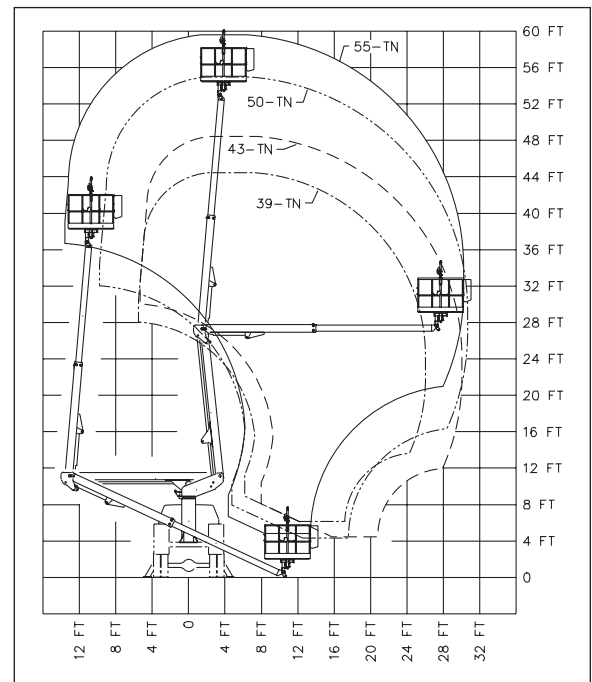
Cab to axle (minimum)	60"	84"	84"	102"
GVWR	17,500 lbs	17,500 lbs	17,500 lbs	24,000 lbs

NOTE:

1. Specifications may vary without prior notification.
2. Required GVWR can vary significantly with chassis, lift mounting location, service body, accessories, and desired payload.

OPTIONS

- Auxillary Outriggers
- Second Set of Hydraulic Tool Outlets
- Lifting Eye
- Emergency Power
- Two-Speed Manual Throttle Control
- Material Handling Jib & Winch
- Various Pedestal Heights
- 120 Volt Outlet @ Platform




TIME
 MANUFACTURING COMPANY
 P.O. Box 20368
 Waco, TX 76702-0368
 254.399.2100
 Fax: 254.399.2651
 1.800.825.1085
 www.timemfg.com

