



# SPCC Compliant Products

*Over 50 Unique Products!*



[www.SpillContainment.com](http://www.SpillContainment.com)

SPCC Regulations state that facilities with total, above-ground, oil storage capacity (not actual gallons on site) of greater than 1,320 gallons must comply.

## So, what is 1,320 gallons?

It's twenty-five  
55-gallon drums.



OR

---

It's two IBC tanks  
and fifteen drums.



OR

---

It's one tanker  
truck.



OR

---

It's one railroad  
tanker car.



UltraTech International, Inc.  
11542 Davis Creek Court  
Jacksonville, FL 32256 USA  
(904) 292-1611  
Toll Free 1-877-ULTRATECH  
(1-877-858-7283)  
Fax (904) 292-1325  
E-mail: [info@SpillContainment.com](mailto:info@SpillContainment.com)  
[www.SpillContainment.com](http://www.SpillContainment.com)

# Ultra IBC SpillPallet Plus®

## Economical And Portable Containment For IBCs



Part# 1157

- Low profile, 28" overall height — allows safe and convenient IBC tank handling and dispensing.
- All polyethylene construction — offers excellent chemical resistance and will not rust or corrode.
- Forkliftable — allows convenient positioning to desired locations.
- Low-cost design with value-added features and benefits.
- Large 52" x 52" deck allows safe and convenient placement of IBC tanks.
- Small footprint — 62" x 62" unit requires minimal floor space.
- Available with optional Bucket Shelf (Part# 1160) — catches leaks or spills during dispensing.
- **360-gallon sump capacity meets SPCC and EPA Container Storage Regulations.**

ULTRA-IBC SPILLPALLET PLUS		
Ultra-IBC SpillPallet Plus		Ultra-BucketShelf
Part# 1157: no drain • Part# 1158: with drain	Containment Capacity: 360 gallons (1363 L)	Part# 1160
Dimensions: 62" x 62" x 28" (1575 mm x 1575 mm x 711 mm)	Uniformly Distributed Load: 8,500 lbs. (3864 kg)	Dimensions: 19 1/2" x 16" x 14 1/2" (495 mm x 406 mm x 368 mm)
Weight: 280 lbs. (127 kg)		Weight: 10 lbs. (5 kg)

U.S. Patent No. 5,615,608

# Ultra Twin IBC SpillPallet®

## Save Money — Store Two IBC Tanks Side-By-Side



- Use for intermediate bulk containers (IBCs), drums, or other large vessels. (All materials stored must be chemically compatible.)
- Available with optional Bucket Shelf for either or both sides — catches small leaks or spills during dispensing.
- Grates are easily removed for quick clean-up.
- **One-piece, molded sump holds 535 gallons — meets EPA Containment and SPCC Regulations for two IBC tanks.**



ULTRA-TWIN IBC SPILLPALLET		
Part# 1140: no drain Part# 1144: with drain	Part# 1141: no drain, w/1 Right Side Bucket Shelf	Part# 1142: no drain, w/1 Left Side Bucket Shelf
Part# 1143: no drain, w/ 2 Bucket Shelves	Part# 1145: with drain, w/1 Right Side Bucket Shelf	Part# 1146: with drain, w/1 Left Side Bucket Shelf
Part# 1147: with drain, w/ 2 Bucket Shelves Bucket Shelf: 19 1/2" x 16" x 14 1/2" (3162 mm x 1565 mm x 559 mm)	Dimensions: Twin IBC SpillPallet — 124 1/2" x 61 5/8" x 22" (3162 mm x 1565 mm x 559 mm)	
Part# 1160: Bucket Shelf Bucket Shelf: 10 lbs. (5 kg)	Weight: Twin IBC SpillPallet — 451 lbs. (205 kg) Gallon Capacity: 535 gallons (2025 L)	Weight Capacity: 8,000 lbs. UDL/side (3636 kg)

To see more IBC SpillPallets, visit our website, [www.SpillContainment.com](http://www.SpillContainment.com).

# Ultra IBC HardTop®

## Comply With Regulations While Storing IBC Tanks Outdoors



- Upper roll-top door and lower swing-out doors combine to allow easy and convenient access to IBC.
- Safely stores an IBC tank with maximum dimensions of 52" x 52" x 61".
- Low profile (28" height), 360-gallon containment sump allows safe material handling and dispensing.
- Forkliftable, lockable, all-polyethylene design will not rust or corrode.
- **Helps meet new Stormwater Management Regulations — NPDES, 40 CFR 122.26 (1999).**
- **Meets SPCC and EPA Container Storage Regulation 40 CFR 264.175.**

ULTRA-IBC HARDTOP	
Part# no drain: 1162 • Part# with drain: 1161	Weight: 525 lbs. (239 kg)
Outside Dimensions: 64.5" x 62" x 96" (1639 mm x 1575 mm x 2439 mm)	Containment Capacity: 360 gallons (1363 L)
	Uniformly Distributed Load: 8,500 lbs. (3856 kg)
Ultra-Twin IBC HardTop (Part# 1140) also available for outdoor storage of two IBC tanks.	

U.S. Patent No. 5,615,608

# Ultra Twin IBC HardTop®

## Outdoor Storage for Two IBC Tanks

- Uses same sump as Ultra-Twin IBC SpillPallet (see opposite page).
- Unique, lockable, dual closure allows quick access to tanks.
- Roll-top covers can be easily lifted for routine visual inspection.
- Swing-out doors provide safety and convenience for loading/unloading tanks.
- Safely stores IBC tanks, with maximum dimensions of 52" x 52" x 61".
- **Meets Stormwater, SPCC and EPA Container Storage Regulations.**



ULTRA-TWIN IBC HARDTOP		
Part# 1148: no drain Part# 1149: with drain	Weight: 967 lbs. (440 kg)	Sump Capacity: 535 gallons (2025 L) Weight Capacity: 8,000 lbs. UDL/side (3636 kg)
Dimensions: 128" x 67" x 96" (3251 mm x 1702 mm x 2438 mm)		
Option: Bucket Shelf, Part# 1160		

# Ultra Modular IBC SpillPallets®

## Meet EPA Regulations With Low-Cost Spill Containment For Multiple IBC Tanks

- Indoor and Outdoor Models available for 2, 3, 4 or 5 tanks.
- Each IBC tank sits on a low-profile spillpallet with a containment capacity of 75 gallons — Expansion Tanks provide 65 gallons of additional capacity.
- 100% polyethylene construction — eliminates the potential for rust and corrosion.
- “Flow-through” bulkhead fittings connect spill pallets and Expansion Tanks together, allowing spills to be channeled throughout the containment system — containment capacity is thereby “borrowed” from adjacent spill pallets and Expansion Tanks.



3-Tank Model: 355 Gallon Capacity (shown in “L”-shaped configuration, Part# 1126)

- Meets SPCC and EPA Container Storage Regulation 40 CFR 264.175.
- Helps meet new Stormwater Management Regulations — NPDES, 40 CFR 122.26 (1999).



3-Tank Model: 355 Gallon Capacity (Part# 1166)



Pallet to Pallet connection



Pallet to Expansion Tank connection



4-Tank Model: 3  
65 Gallon Capacity (Part# 1127)

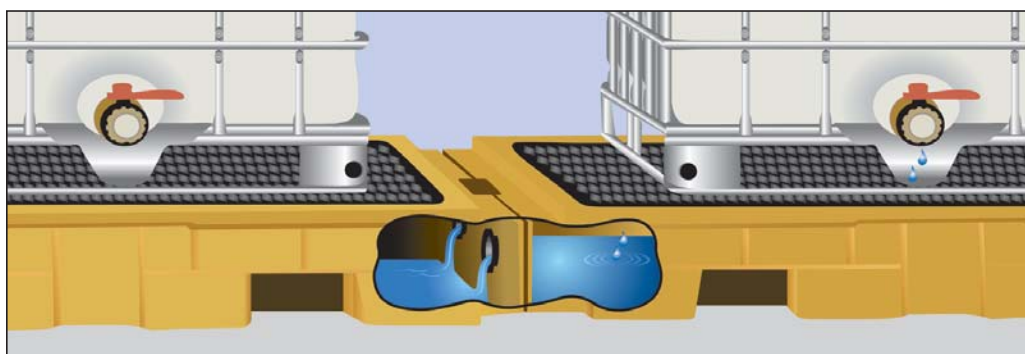


Illustration of how flow-through bulkhead fittings work

### OUTDOOR MODEL FEATURES:

- Unique “roll top” enclosures and swing-out doors allow convenient loading and unloading of IBC tanks.
- Compartments are lockable for secure storage of hazardous materials.
- Optional Extender Kits (Part# 9658) provide for the addition of another compartment. (1 tank per Extender Kit).

ULTRA-MODULAR IBC SPILLPALLETS						Components Included (Qty)			
	Part#	Description	Dimensions	Weight Capacity	Gallon Capacity	Weight	Pallets	Exp. Tanks	
INDOOR	1125	2-Tank Model	186" x 62" x 8 3/4" (4724 mm x 1575 mm x 222 mm)	9,000 lbs. (4083 kg) UDL per Pallet	280 gal. (1060 L)	310 lbs. (141 kg)	(2)	(2)	
	1126	3-Tank Model	248" x 62" x 8 3/4" (6299 mm x 1575 mm x 222 mm)	9,000 lbs. (4083 kg) UDL per Pallet	355 gal. (1344 L)	435 lbs. (198 kg)	(3)	(2)	
	1127	4-Tank Model	279" x 62" x 8 3/4" (7087 mm x 1575 mm x 222 mm)	9,000 lbs. (4083 kg) UDL per Pallet	365 gal. (1382 L)	531 lbs. (241 kg)	(4)	(1)	
	1128	5-Tank Model	310" x 62" x 8 3/4" (7874 mm x 1575 mm x 222 mm)	9,000 lbs. (4083 kg) UDL per Pallet	375 gal. (1419 L)	625 lbs. (284 kg)	(5)	(0)	
	1118	Assembly Kit	Includes hole saw, arbor and set of 2 tightening tools <b>REQUIRED</b>						
	9630	SpillPallet Only	62" x 62" x 8 3/4" (4724 mm x 1575 mm x 222 mm)	9,000 lbs. UDL (4083 kg)	75 gal. (284 L)	125 lbs. (141 kg)	NA	NA	
OUTDOOR	1165	2-Tank Model	126" x 93" x 79" (3201 mm x 2363 mm x 2007 mm)	9,000 lbs. (4083 kg) UDL per Pallet	280 gal. (1060 L)	881 lbs. (400 kg)	(2)	(2)	
	1166	3-Tank Model	188" x 93" x 79" (4776 mm x 2363 mm x 2007 mm)	9,000 lbs. (4083 kg) UDL per Pallet	355 gal. (1344 L)	1258 lbs. (571 kg)	(3)	(2)	
	1167	4-Tank Model	250" x 93" x 79" (6350 mm x 2363 mm x 2007 mm)	9,000 lbs. (4083 kg) UDL per Pallet	365 gal. (1382 L)	1603 lbs. (728 kg)	(4)	(1)	
	1168	5-Tank Model	312" x 62" x 79" (7925 mm x 1575 mm x 2007 mm)	9,000 lbs. (4083 kg) UDL per Pallet	375 gal. (1420 L)	1948 lbs. (884 kg)	(5)	(0)	
	1118	Assembly Kit	Includes hole saw, arbor and set of 2 tightening tools <b>REQUIRED</b>						
	9658	Extender Kit	64" x 62" x 79" (1626 mm x 1575 mm x 2007 mm)	9,000 lbs. UDL (4083 kg)	75 gal. (284 L)	375 lbs. (141 kg)	NA	NA	

Options/Accessories: Part# 1117 — 2" Bulkhead Fittings (Set of 2).  
Part# 1124 — Expansion Tank only, 61" x 31" x 12 1/2" (1550 mm x 788 mm x 318 mm), Capacity: 65 gallons, 30 lbs.

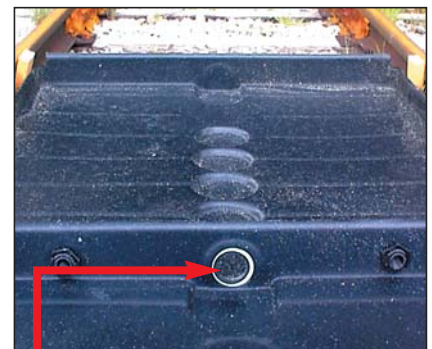


Expansion Tank



### Easy to Install, Modular Design

Center and Side Pans are 53.5" long; containment areas can be easily assembled to any length desired.



Large, 3"-diameter flow-through channels allow spills to quickly travel from one Pan to the next. Channels are located at the low point in each Center and Side TrackPan.

**NOTE: Ultra TrackPans can also be ordered as complete systems: Popular 9-foot, 40-foot and 60-foot systems are available.**

Part# 9595

Ultra-TrackPans have been designed to provide spill containment at industrial rail sidings, locomotive maintenance and fueling facilities. Available in virtually any length, Ultra-TrackPans may be used to collect small spills and leaks OR to capture and channel off significant spills caused by defective equipment or a major overflow.

- Prevent Costly Cleanup and Regulatory Fines.
- Slip-Resistant Design — Entire top surface is safe to walk on, even when wet or oily.
- All Polyethylene Construction — Rugged TrackPans withstand harsh chemicals and are designed to function in temperatures ranging from -40° F to +140° F.
- Sealed System — Polyethylene gaskets keep spills from falling between the rails and Pans.
- Trucks and other vehicles can drive over TrackPans with grates in place.\*
- Economical, easy to install.
- Helps comply with SPCC Regulations.

\*To drive over TrackPans, firm footing must be beneath the Pans; also must "ramp up" to Side Pans with asphalt or concrete.



ULTRA-TRACKPANS	
TrackPans with Grates, No Covers	TrackPan Covers Only
<p>Part# 9566: Center TrackPan with Grates (Includes 2 bulkhead fittings, 4 gaskets, 2 grates) Dimensions: 53 1/2" x 53 1/2" x 6" (1359 mm x 1359 mm x 153 mm) Weight: 106 lbs. (49 kg) • Containment Capacity: 18 gallons (69 L)</p>	<p>Part# 9580: Cover for Center TrackPan Dimensions: 56" x 54" (1423 mm x 1372 mm) Weight: 24 lbs. (11 kg)</p>
<p>Part# 9576: Side TrackPan with Grate (Includes 1 bulkhead fitting, 2 gaskets, 1 grate) Dimensions: 53 1/2" x 27 1/2" x 6" (1359 mm x 699 mm x 153 mm) Weight: 60 lbs. (28 kg) • Containment Capacity: 19 gallons (72 L)</p>	<p>Part# 9581: Cover for Side TrackPan Dimensions: 56" x 27 3/4" (1423 mm x 705 mm) Weight: 11 lbs. (5 kg)</p>
<p>Options: Part# 9584: Rebar Fasteners with Protective Caps, 20-Pack • Part# 9559: 3" dia. Bulkhead Fitting (for below-grade piping)</p>	

U.S. Patent Nos. 5,562,047; 6,173,856; Other Pat. Pending

Unique, "Living Hinge" Design Allows Hands-Free Drive In/Drive Out — No Need To Manually Raise Or Lower The Endwalls



Two-way "living hinge" design allows convenient, hands-free drive in/drive out.

- Entry and exit walls are supported every 12" with a patented "living hinge".
- Once a vehicle has entered or exited, the walls automatically spring back to their vertical position.
- Both long sidewalls are held upright by PVC sidewall assemblies. Simply swivel the feet to lower the sidewalls for storage or transport to another location.
- **Helps comply with SPCC Regulations.**

ULTRA-CONTAINMENT BERMS, ULTIMATE MODEL			
Dimensions	Part #	Weight	Containment Capacity
12' x 60' x 1' (3.7 m x 18.3 m x .3 m)	8505	309 lbs. (140 kg)	5,385 gallons (20382 L)
15' x 50' x 1' (4.6 m x 15.2 m x .3 m)	8506	326 lbs. (148 kg)	5,610 gallons (21234 L)
15' x 66' x 1' (4.6 m x 20.1 m x .3 m)	8507	405 lbs. (184 kg)	7,405 gallons (28028 L)

Options: Ground Tarps, Track Belts, Self-Bailer, see page 19.

U.S. Patent No. 5,924,461

Standard material of construction is Copolymer 2000™. XR5, polyurethane and other materials also available. Custom sizes available.

## Collapsible Wall Model

Economical Design Offers Cost Savings and Secure Containment

- The Collapsible Wall Model Containment Berm features rugged PVC sidewall assemblies for sidewall support. Simply swivel the "feet" of the PVC supports to lower or raise the sidewalls in just seconds!
- Custom sizes available.
- Standard material of construction is Copolymer 2000™.
- **Meet SPCC and EPA Container Storage Regulation 40 CFR 264.175 with Collapsible Wall Model Containment Berms.**



ULTRA-CONTAINMENT BERMS, COLLAPSIBLE WALL MODEL			
Dimensions	Part#	Weight	Containment Capacity
4' x 6' x 1' (1.2 m x 1.8 m x .3 m)	8405	43 lbs. (20 kg)	179 gallons (678 L)
6' x 6' x 1' (1.8 m x 1.8 m x .3 m)	8403	46 lbs. (21 kg)	269 gallons (1018 L)
10' x 10' x 1' (3.0 m x 3.0 m x .3 m)	8400	78 lbs. (35 kg)	748 gallons (2831 L)
12' x 60' x 1' (3.7 m x 18.3 m x .3 m)	8404	323 lbs. (147 kg)	5,385 gallons (20382 L)
15' x 50' x 1' (4.6 m x 15.2 m x .3 m)	8401	319 lbs. (145 kg)	5,610 gallons (21234 L)
15' x 66' x 1' (4.6 m x 20.1 m x .3 m)	8402	420 lbs. (191 kg)	7,405 gallons (28028 L)

Options: Ground Tarps, Track Belts, Protective Storage Bags. Self-Bailer, see page 19.

To see more Containment Berms, visit our website, [www.SpillContainment.com](http://www.SpillContainment.com).



- Unique, urethane construction allows the pad to deform and seal off most drains — temporarily “seals” to any smooth surface.
- A valuable addition to any emergency response plan, spill kit, SPCC or stormwater management program.
- Ultra DrainSeal Plus is available for applications with drains that might be driven over with long-term outdoor exposure. Visit [www.SpillContainment.com](http://www.SpillContainment.com) for more information.
- **BOTH sides will quickly seal drains — no specified “top” or “bottom.”**



Part# 2142



Optional Ultra-DrainSeal WallMount Units allow quick response to any spill — just “grab and go”!



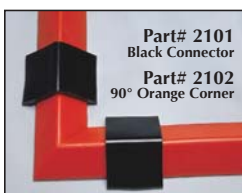
ULTRA-DRAINSEALS		ULTRA-DRAINSEAL WALLMOUNT
Flexible, non-absorbing material with reinforced, tear-resistant mesh	<p>Square:</p> <p>Part# 2126: 18" x 18" x 3/8" • 5 lbs. (458 mm x 458 mm x 10 mm • 2.5 kg)</p> <p>Part# 2127: 24" x 24" x 3/8" • 9 lbs. (610 mm x 610 mm x 10 mm • 4 kg)</p> <p>Part# 2130: 36" x 36" x 3/8" • 10 lbs. (915 mm x 915 mm x 10 mm • 4.5 kg)</p> <p>Part# 2131: 42" x 42" x 3/8" • 20 lbs. (1067 mm x 1067 mm x 10 mm • 9 kg)</p> <p>Part# 2132: 48" x 48" x 3/8" • 34 lbs. (1220 mm x 1220 mm x 10 mm • 15 kg)</p> <p>Part# 2133: 54" x 54" x 3/8" • 41 lbs. (1372 mm x 1372 mm x 10 mm • 18.5 kg)</p> <p>Circular:</p> <p>Part# 2134: 12" dia. x 3/8" • 2 1/2 lbs. (305 mm dia. x 10 mm • 1 kg)</p> <p>Part# 2135: 20" dia. x 3/8" • 5 lbs. (508 mm dia. x 10 mm • 2.5 kg)</p> <p>Part# 2136: 30" dia. x 3/8" • 10 lbs. (762 mm dia. x 10 mm • 4.5 kg)</p> <p>Part# 2137: 42" dia. x 3/8" • 20 lbs. (1067 mm dia. x 10 mm • 9 kg)</p> <p>Rectangular:</p> <p>Part# 2124: 18" x 58" x 3/8" • 16 lbs. (458 mm x 1474 mm x 10 mm • 7 kg)</p> <p>Part# 2125: 36" x 58" x 3/8" • 30 lbs. (915 mm x 1474 mm x 10 mm • 13.5 kg)</p>	<p>Part# 2140: Fits 18" x 18", 24" x 24", 12" dia. and 20" dia. DrainSeals (458 mm x 458 mm, 610 mm x 610 mm, 305 mm dia. and 508 mm dia. DrainSeals)</p> <p>Part# 2142: Fits 36" x 36" and 30" dia. DrainSeals (915 mm x 915 mm and 762 mm dia. DrainSeals)</p> <p>Part# 2143: Fits 42" x 42", 48" x 48" and 42" dia. DrainSeals (1067 mm x 1067 mm, 1220 mm x 1220 mm, and 1067 mm dia. DrainSeals)</p> <p>Made of durable polyethylene. Velcro strap allows quick and easy access.</p> <p>Non-slip handle for easy carrying.</p> <p>Mounting hardware included.</p>

U.S. Patent No. 6,530,722

## Temporary Berm Seals Off Spills From The Environment, Nearby Drains And Doorways



- Standard 10-foot sections can be cut to various lengths to meet custom needs.
- Unique, urethane material “weeps” into small cracks and crevices to seal off liquid flow.
- SpillBerm is non-absorbing and is easily cleaned for repeated use.
- Flexible Ultra-SpillBerm will bend and turn to form almost any shape while temporarily “bonding” to any smooth surface.
- **Helps comply with NPDES and SPCC Regulations.**



Decide what shape or configuration is required and use optional Connectors and 90° Corners to complete the area.

- Applications include:
  - Spill response
  - Temporary secondary containment
  - Sealing off of doorways during washdown operations

ULTRA-SPILLBERM	
Part# 2100: Orange • Part# 2050: Black	
Dimensions: 10' x 4" x 2 1/4" (2.4 m x 102 mm x 58 mm)	
Weight: 31 lbs. per unit (14 kg)	Material: Non-absorbing polyurethane
Optional Connectors (Part# 2101) used to connect 10' (3048 mm) sections	
Optional Corners (Part# 2102) are used with Connectors to make 90° corners	
Optional Carrying Case (Part# 2104)	

To see more SpillBerms, visit our website, [www.SpillContainment.com](http://www.SpillContainment.com).

U.S. Patent No. 5,236,281



## Bung-Access Funnel

The Bung-Access Ultra-Funnel allows access to the 3/4" drum bung. Installation of our PopUp Fill Gauge in the 3/4" bung allows visual monitoring of waste level in the drum and helps you plan ahead for drum removal. It also eliminates the mess caused by overfilling!



Part# 0482  
Unique zig-zag channeled surface diffuses splashing. Level surfaces allow filters, paint cans, buckets and bottles to remain upright while draining passively.

## Burp-Free Funnel

Burp-Free Ultra-Funnels feature a built-in vent. No more splashing or "burping" when pouring liquids!

- Threaded brass insert screws into 2" drum bung.
- All polyethylene construction won't rust or corrode — provides excellent chemical resistance.
- Hinged, lockable lid prevents unauthorized access.
- New, larger style provides bigger pouring area and easy access.



ULTRA-BUNG ACCESS FUNNEL	
Part# 0482: with spout	Part# 0484: with hinged cover, with spout
Dimensions: 23 5/8" OD x 5 1/2" (600 mm x 140 mm) 29" x 26 3/4" x 9 1/2" (737 mm x 679 mm x 241 mm) with hinged cover	
Weight: 9 lbs. (4 kg) 13 lbs. (6 kg) with hinged cover	
Capacity: 6 gallons (23 L)	
Options: Snap-on Cover, Part# 0485 • PopUp Fill Gauge, Part# 9985	

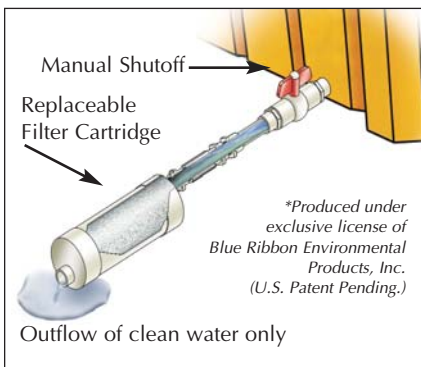
ULTRA-BURP-FREE FUNNEL		
Part# 0651: Standard	Weight: 5 lbs. (2.5 kg)	Dimensions: 13 3/8" dia. x 11" H (340 mm dia. x 279 mm H)
Part# 0656: Large	Weight: 8 lbs. (3.5 kg)	Dimensions: 22" dia. x 11 1/2" H (559 mm dia. x 292 mm H)

U.S. Patent No. 5,117,878; D,317,850

To see more Funnels, visit our website, [www.SpillContainment.com](http://www.SpillContainment.com).



## Passively Filter Hydrocarbons From Stormwater In Outdoor Containment Products



- The best protection for non-monitored containment sites.
- Helps eliminate problems associated with the collection of rainwater in outdoor containment products.
- Simple installation — can be connected to any outdoor containment product.
- Hydrocarbon "sheens" and modest spills are captured — clean stormwater drains through the outflow port.
- Larger or concentrated spills activate "auto-shutoff" mechanism.
- Manual shutoff valve can be used to secure all draining operations, change out the filter cartridge.
- Filters are quickly and easily replaced.



ULTRA-SELFBAILER			
Part# 9935: standard	Part# 9937: large	Part# 9926: XL	Part# 9928: XXL
Dimensions: 28" L x 3 1/2" dia. (712 mm x 89 mm dia.)	Dimensions: 36" L x 4 1/2" dia. (915 mm x 115 mm dia.)	Dimensions: 39" L x 6 1/2" dia. (991 mm x 166 mm dia.)	Dimensions: 43" L x 9" dia. (1093 mm x 229 mm dia.)
Weight: 2 lbs. (1 kg)	Weight: 7 lbs. (3 kg)	Weight: 11 lbs. (5 kg)	Weight: 16 lbs. (7 kg)
Flow Rate: 7.5 gallons per hour* (29 L per hour*)	Flow Rate: 22 gallons per hour* (84 L per hour*)	Flow Rate: 42 gallons per hour* (159 L per hour*)	Flow Rate: 55 gallons per hour* (209 L per hour*)
Material: PVC	Material: PVC	Material: PVC	Material: PVC
Replacement Filter Cartridges 2-Pack Part #9936	Replacement Filter Cartridge 1-Pack Part #9938	Replacement Filter Cartridge 1-Pack Part #9927	Replacement Filter Cartridge 1-Pack Part #9929

\*At 2"WC (Head Pressure)



Use with IBC SpillPallets, Containment Berms and other outdoor containment products.

- Helps comply with SPCC Regulations.