

DBI-SALA ANCHORAGES AND ANCHORAGE CONNECTORS

Security to Match the Task

Anchorage connectors are greatly dependent on the specific requirements of the purchaser, including the type of attachment, the environment and the connecting system. DBI-SALA offers the most complete line of anchorage connectors available, rigorously tested to ensure the strength you need. This means you can always find the best product to fit your requirements.

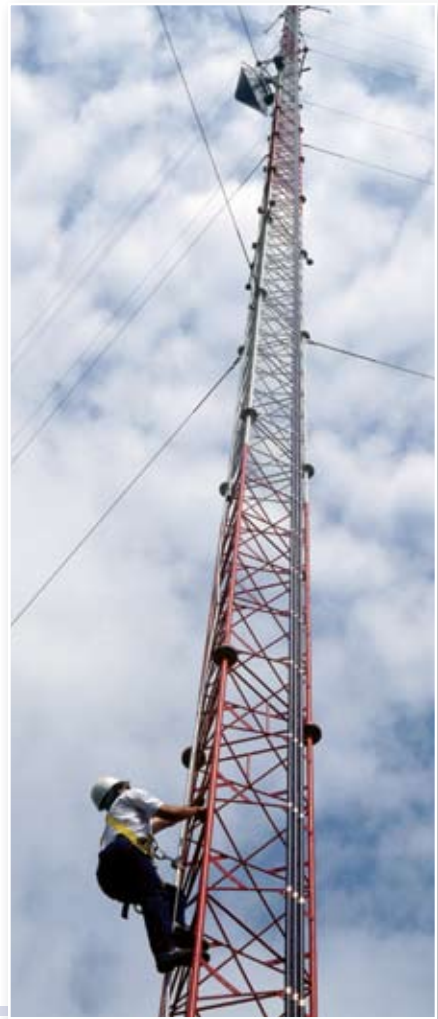
Anchorage

An anchorage is a secure point of attachment for the fall arrest system. The anchorage must be capable of supporting a load of 5,000 lb. (22kN) per worker attached to the anchorage or shall be designed, installed and used as part of a complete personal fall arrest system which maintains a safety factor of at least 2.

Anchorage may be certified (designed or engineered on site for fall protection) or non-certified (beams, trusses or other suitably strong structures). Certified anchorages should be identified with paint or special markings and kept on a site location list.

Anchorage Connectors

Anchorage connectors provide a means of attaching the system to the anchorage. These vary widely depending on application. Some of the common types are anchor slings, roof anchors, beam clamps, rail sliders, trolleys, eyebolts and shepherd hooks.



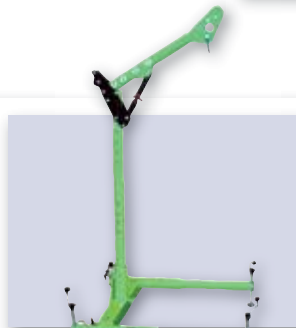
ANCHORAGE CONNECTORS FOR BUCKET TRUCKS

This anchor is secured to the boom of a bucket truck. It provides the worker with a tie-off point for their lanyard or self retracting lifeline.



ANCHORAGE CONNECTORS FOR CLIMBING

Ladder safety systems provide complete safety while climbing. The shock absorbing top bracket and tension indicating bottom bracket serve as the anchors for the cable which runs the length of the climbing area.



ANCHORAGE CONNECTORS FOR UNDERGROUND/UTILITY WORK

Davit arms and tripods are ideal anchorage systems for mechanical advantage devices such as winches in confined space entry/rescue scenarios. Various models and configurations are available to suit specific site needs.



ANCHORAGE CONNECTORS PLANT/FACILITY WORK

Tie-off adaptors and scaffold chokers are alternative anchorage connectors for a fall arrest system. They may be made of different materials, including cable, web and chain. Kevlar® tie-off adaptors should be used when working with high temperatures.

What to look for in an Anchorage Connector

Anchorage Connectors are Sold by:

- What they connect to (steel, concrete, wood)
- Whether they are fixed or mobile
- Whether they are permanent or portable

Experienced DBI-SALA technicians can provide guidance on which anchorage connector will best fit your applications.

Testing

Anchorage connectors are a critical part of a fall protection system. They must be tested to ensure that they have the strength to withstand the tremendous forces that can be generated by a fall. DBI-SALA anchorage connectors are rigorously tested both in-house and by SEI, an independent, non-profit testing and certification company accredited by ANSI and the Standards Council of Canada (SCC).

VACUUM ANCHORS

With a Vacuum Anchor System at your workers' side, they can anchor to virtually any smooth, non-porous surface simply by flipping a switch and waiting for the green light. So whether they need to work on a tank, vessel or large steel structure, they'll always be able to quickly, easily put themselves where they need to be—without putting themselves in danger.



WHAT TO LOOK FOR IN A SNAP HOOK AND CARABINER



Self-locking

Snap hooks and carabiners used in fall protection or rescue operations must be self-locking. Non-locking hooks must not be used for fall protection because of the danger of rollout—the accidental disengagement of a connector from whatever it is attached to. The unique DBI-SALA snap hook is an industry favorite.

One-handed Operation

Snap hooks should be simple to operate in order to ensure that they are used properly, even when wearing gloves.

Materials

DBI-SALA snap hooks and carabiners are made of high tensile alloy steel or aluminum.

Standards

Snap hooks and carabiners used for fall protection must be capable of withstanding a 5,000 lbs. (22kN) load and be proof-tested to at least 3,600 lbs. (16kN). Many connectors manufactured outside the United States will not meet these strict requirements.

Features	Benefits	SAFLOK® CARABINERS	PATENTED SNAP HOOKS
Maximum strength	Safety	✓	✓
One-handed Operation	Ease of use	✓	✓
Range of gate openings	Versatility	✓	
Self-locking & closing	Safety	✓	✓
Corrosion resistant	Durability	✓	✓

NEW ANSI Z359 STANDARD SUMMER 2007

Under the new standard, snap hook and carabiner gates must withstand a 3,600 lb. load. Both DBI-SALA and PROTECTA branded products are available to meet the new standard. We've made ordering the 3,600 lb. hook gate option easy; 120 series lanyards will change to 123 and 122 series changes to 124 (ex. 1244306 with 3,600 lb. gate hooks would be 1244306)

DBI-SALA offers the industry's widest range of anchorage devices

DBI-SALA offers the industry's widest range of anchorage connectors combining ease of use, lightweight and 5,000 lb. (22kN) minimum tensile strength to meet or exceed OSHA and ANSI Z359.1 requirements. CE and CSA compliant models are also available.



ANCHORAGE CONNECTORS			
Product	Description	Model #	Additional
Tie-Off Adaptor	Pass thru design provides a safe and easy way to anchor a fall protection device to an overhead location and beyond normal reach. 1-3/4" (44mm) polyester strap, 3" (76mm) wear guard, zinc plated steel hardware	1003000	3' (.9m) length
		1002103	3' (.9m) length Adjustable
		1003006	6' (1.8m) length
		1002106	6' (1.8m) length Adjustable
Scaffold Choker	1" (25mm) polyester strength member, 17" (43 cm) length, fits 3" (76mm) max. dia. structure, zinc plated steel hardware	1201390	17" (43cm) length
Cable Choker	Pass thru design, 7 x 19-3/8" (9.5mm) stainless steel cable, dual O-ring pass thru, zinc plated steel hardware	5900550	4' (1.2m) length
		5900551	6' (1.8m) length
D-ring Anchorage Plate	Bolted or weld on, two 1/2" (12mm) attachment holes, 1/4" x 2" x 4-1/4" (6mm x 50mm x 108mm)	2101630	Stainless steel plate, zinc plated D-ring
		2101634	Raw steel
		2101632	Painted
		2101636	All stainless steel
First-Man-Up™ System	Provides a complete system to mount a tie-off adaptor to an overhead anchorage	2104519	6'-12' (1.8m-3.6m) Adjustable pole
		2104520	8'-16' (2.4m-4.8m) Adjustable pole
Door Jamb Anchor	Non-penetrating anchor designed to install against door or window jambs. Fits opening sizes 21.5" to 51.5" (54.6 to 130.8cm), weighs 14 lbs. (6.3kg)	2100080	Fits openings from 21.5" to 51.5" (54.6cm-130.8cm)
Boom Belt	Web strap anchorage connector that is designed to attach to a lift truck boom or similar object and provide a lanyard connection point for fall protection.	1001250	4' (1.2m) length Adjustable
		1001251	8' (2.4m) length Adjustable
Perimeter Limiter	Provides a non-penetrating anchor or tie-off point for personnel performing work on concrete decking operations or similar type applications.	2100090	Overhead anchorages for 2 users reduces fall distance & swing falls.
		2100091	9.5' (2.9m) mast (optional)

NOTE : All part numbers are the same in Canada

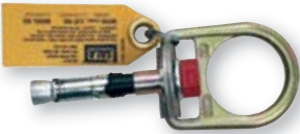
ANCHORAGES AND ANCHORAGE CONNECTORS



BEAM ANCHORS

Product	Model #	Description
Fixed Beam Anchor	2108406	Works horizontally or vertically. Fits 1-1/2" (38mm) thick flange, 2-1/2 to 12" (63 to 304mm) wide, larger models available
Glyder2™ Sliding Beam Anchor	2104700	For complete horizontal mobility, designed for use with the Force2™ shock absorbing lanyard when used at the worker's feet. Easily installed and easily removed and taken to a new site. Integrated ratcheting adjustment system provides quick and easy installation and removal. NO MORE PINS AND CHAINS! Extremely lightweight at only 3.7 lbs. (1.66 kg), with a user capacity of 420 lbs. (189 kg). Fits flange 3-1/2" to 14" (9cm to 35 cm) wide, up to 1-1/4" (3cm) thick
Glyder™ Sliding Beam Anchor	2110941	For complete horizontal mobility, designed for use with the Force2™ shock absorbing lanyard when used at the worker's feet. Easily installed and easily removed and taken to a new site. Fits flange 6" to 18" (15cm to 45cm) wide, up to 2-1/2" (6.3cm) thick
Man Rated I-Beam Trolley	2103143	Designed for use on I-Beam Flanges ranging from 3" to 8" (7.6cm to 20.3cm) wide, up to 11/16" (17.5mm) thick. This anchorage connector rolls along an I-Beam providing horizontal mobility

CONCRETE CONNECTORS



Product	Description	Model #	Additional
Concrete D-Ring Anchor	Reusable D-Ring assembly—drill hole in set concrete, insert and torque anchor; for temporary or permanent applications; fits 11/16" (18mm) or 3/4" (19mm) holes (standard drill bits); connection swivels 360°	2104560	Standard model
		2104561	D-ring assembly with 5 additional bolts
		2104562	D-ring assembly with 11 additional bolts



Product	Description	Model #	Additional
Saflok® Carabiners	Self-closing/self-locking gate for increased safety and security, steel construction, user friendly even with gloves. Compatible with most connecting rings	2000106	1-3/16" (30mm) gate opening
		2000113	1-3/16" (30mm) gate opening, 3,600 lb rated gate
		2000108	2-3/16" (55mm) gate opening
		2000114	2-3/16" (55mm) gate opening, 3,600 lb rated gate
		2000523	11/16" (17mm) gate opening
		2000112	11/16" (17mm) gate opening, 3,600 lb rated gate
		2000200	11/16" (17mm) gate opening, stainless steel
		2000300	2" (50mm) gate opening
2000301	2" (50mm) gate opening, stainless steel		

NOTE: All part numbers are the same in Canada.