

# Coveralls for Wildland Fire Fighting (Brush Gear)

CLASSIFIED TO N.F.P.A. 1977-CURRENT EDITION



**Model C076 5648 NOMEX®**

**Model C076 3948 INDURA®**

**Coveralls**

**Fabric:** 6.0 oz. per square yard DuPont NOMEX® aramid or 9.0 oz. per square yard INDURA®

- heavy-duty, two-way brass zipper
- reinforced nickel plated brass snaps covered on the inside
- pleated bi-swing back with elasticized waistband
- right breast pocket with full flap, with hook and loop closure
- radio pocket on left chest with full hook and loop closure
- two hip pockets with flaps and hook and loop closures
- no metal exposed to skin
- sewn throughout with NOMEX® thread
- 10" leg zippers
- leg gusset gives protection even with leg zippers open

**Please note, in order to be compliant with NFPA 1977, these garments fit much more loosely than standard Topps garments. We recommend utilizing try-on garments to ensure the correct fit.**



**NOMEX®**  
NOMEX® is a DuPont registered trademark.



INDURA® is a registered trademark of Westex, Inc.

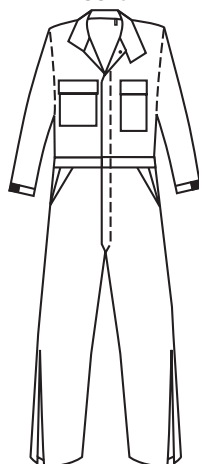


**Options for the Wildland Styles**

2" Scotchlite Triple Trim in lime yellow/silver/lime yellow and red orange/silver/red orange. Also available in solid 1" or 2" Scotchlite in silver.



**C076**



Coverall

NOMEX®

5648 Yellow

INDURA®

3948 Yellow

**COVERALL SIZES:**

	Small	Medium	Large	X-Large	2X-Large	3X-Large
	34-36	38-40	42-44	46-48	50-52	54-56
Short:	•	•	•	•	•	•
Regular:	•	•	•	•	•	•
Tall:		•	•	•	•	•
X-Tall:			•	•	•	

Short: 5'4"-5'7" Regular: 5'7½"-5'11" Tall: 5'11½"-6'3" X-Tall: 6'3½"-6'6"