

Lined Coveralls

Model C080

Standard Lined Coveralls

Fabric: 7.75 oz. per square yard
65% polyester/35% cotton

Lining Fabric: 4.4 oz. polyester batting
quilted to polyester facecloth.

- heavy-duty, two-way brass zipper
- two breast pockets with zipper closure
- two hip pockets
- side access to pants
- 16" leg zippers

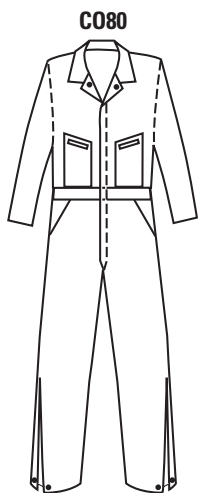
Model C014

Deluxe Lined Coveralls

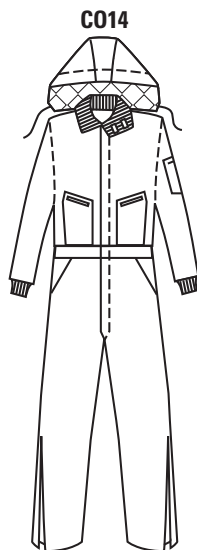
Fabric: 7.75 oz. per square yard
65% polyester/35% cotton

Lining Fabric: 6.0 oz. polyester batting quilted
to polyester facecloth.

- heavy-duty, two-way brass zipper
- large knit collar with hook and loop closure
- two breast pockets with zippers
- removable lined hood with drawstring
- 2-in-1 pocket on left sleeve, larger section has zippered top
- two hip pockets with overlapping flaps
- 16" leg zippers



Standard Lined Coveralls



Deluxe Lined Coveralls

1105
Navy

1335
Charcoal

1340
Orange

1105
Navy

1475
Spruce

STANDARD LINED COVERALL SIZES:

	Small	Medium	Large	X-Large	2X-Large	3X-Large
	34-36	38-40	42-44	46-48	50-52	54-56
Regular:	•	•	•	•	•	•
Tall:		•	•	•	•	
X-Tall:		•	•	•	•	

Regular: 5'7½"-5'11" Tall: 5'11½"-6'3" X-Tall: 6'3½"-6'6"

NOTE: Additional sizes available in some colors.

DELUXE LINED COVERALL SIZES:

	Small	Medium	Large	X-Large	2X-Large	3X-Large
	34-36	38-40	42-44	46-48	50-52	54-56
Regular:	•	•	•	•	•	•
Tall:		•	•	•	•	

Regular: 5'7½"-5'11" Tall: 5'11½"-6'3"

NOTE: Additional sizes available in some colors.