

Tactical Wear Unlined Coverall



Model C043

Tactical Wear Coverall

This jumpsuit style is used by many correctional facilities and a large number of local municipalities in the state of California and beyond. It's practical design and rugged construction have made it a favorite in these areas.

Fabric: Regular Weight:

7.75 oz. per square yard 65% polyester/35% cotton

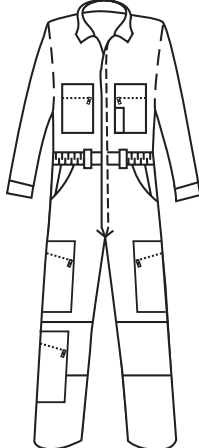
Light Weight:

5.5 oz. per square yard 65% polyester/35% cotton

- hook and loop closure at neck
- two breast pockets with zipper closures
- pencil slot on left breast pocket
- concealed heavy-duty, two-way brass zipper
- cuffs on sleeves with concealed snap closure
- pleated bi-swing back with elasticized inserts
- two side pockets are reinforced at bottom
- double reinforcement over knees
- cargo pocket on each leg with a zipper closure
- additional cargo pocket below right knee with slanted zipper closure
- belt loops
- two zippered hip pockets



C043



Tactical Wear Coverall

Regular
Weight

1572
Olive

Light
Weight

0672
Olive

36

TACTICAL WEAR UNLINED COVERALL SIZES:

| | | | | | | | | | | | |
|----------|----|----|----|----|----|----|----|----|----|----|----|
| Chest: | 36 | 38 | 40 | 42 | 44 | 46 | 48 | 50 | 52 | 54 | 56 |
| Short: | • | • | • | • | • | • | | | | | |
| Regular: | • | • | • | • | • | • | • | • | • | • | • |
| Tall: | | | • | • | • | • | • | • | • | • | |

Short: 5'4" - 5'7" Regular: 5'7½" - 5'11" Tall: 5'11½" - 6'3"

Note: Additional sizes are available in some styles.