

Jackets and Economy Coveralls of FR Cotton INDURA®



Model JK18

Ike Style Uniform Jackets

Fabric: 9.0 oz. per square yard INDURA®

- two divided pockets with access from top and sides
- self-locking brass zipper
- adjustable button cuffs and waist take-up tabs
- sewn in zipper track for attaching liners (for Liners, see Page 10)



INDURA® is a registered trademark of Westex, Inc.

NFPA 70E
Arc Rating
9.0 oz. - 7.7

Model C011 Coveralls

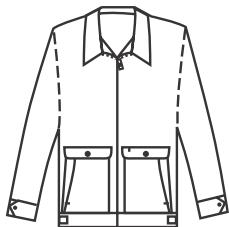
Fabric: 9.0 oz. per square yard INDURA®

- heavy-duty, two-way brass zipper
- pleated, bi-swing back
- two patch breast pockets with flap and pencil slot on left pocket
- two hip pockets with a snap closure on the left hip pocket
- 2-in-1 utility/tool pocket on right leg
- side access to pants with snap closure
- 2-ply cuff with snap closure
- sewn throughout with NOMEX® thread

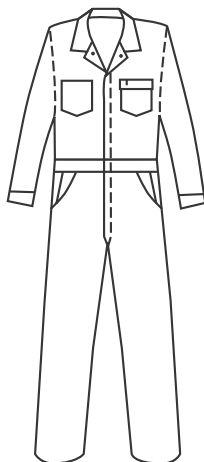


C011

JK18



Ike Style Uniform Jacket



Coveralls

3905
Navy

3915
Royal

3905
Navy

3940
Orange

3950
Tan

COVERALL SIZES

Chest:	38	40	42	44	46	48	50	52	54	56
Regular:	•	•	•	•	•	•	•	•	•	•
Tall:	•	•	•	•	•	•	•	•	•	•

Regular: 5'7½" - 5'11" Tall: 5'11½" - 6'3"

NOTE: Additional sizes are available in some colors.

JACKET SIZES:

Chest:	40	42	44	46	48	50	52	54	56
Regular:	•	•	•	•	•	•	•	•	•
Tall:	•	•	•	•	•	•	•	•	•

Regular: 5'7½" - 5'11" Tall: 5'11½" - 6'3"

Note: Additional sizes are available in some colors.