

CIRCUIT BREAKER LOCKOUTS

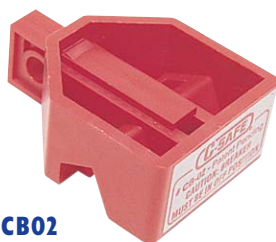


Constructed of rigid plastic, the new C-SAFE circuit breaker lockouts are now available for either single or double pole circuit breaker lockout applications.



CB01

A single pole lockout, CB01 requires a switch breaker with a recessed hole in it.



CB02

The CB02, is a double pole lockout and requires the breakers to be connected with a cross bar for lockout application.



CB03

A single pole lockout, CB03 does not require a switch breaker with a recessed hole in it.

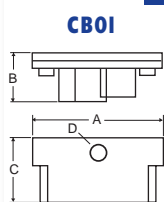
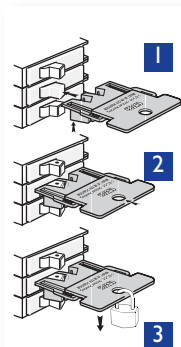


CB04

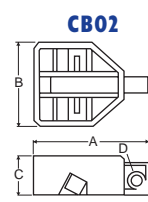
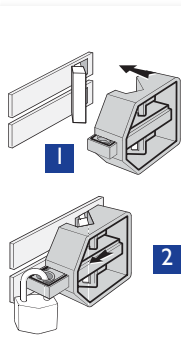
Our double pole circuit breaker lockout CB04 will fit most major brands of electrical circuit breakers. If this lockout does not fit, it may be returned.



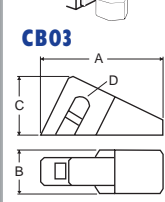
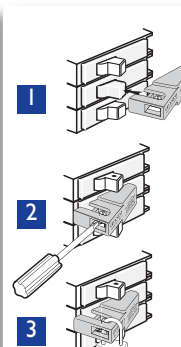
ASSEMBLY INSTRUCTIONS



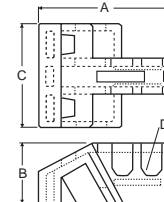
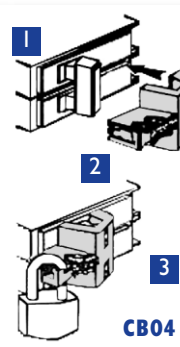
CB01 Our single pole breaker lockout requires a single toggle with a recessed hole in it.
 1 • To install, simply open the lock by sliding the base of the lock backwards.
 2 • Place over the toggle, making sure that the small pole inside the lockout device is now inserted into the hole of the toggle. Close the lockout by pushing the base forward after ensuring that the holes are aligned.
 3 • You are now ready to install your lock. This model will accommodate breakers up to 9/16" (14mm.) in width. **Remember**, the breaker must be in the "off" position before installing.



CB02 Our double pole breaker lockout requires that there be two toggles connected together with a cross bar.
 1 • To install, place over the toggles with the slotted side of the lockout covering the toggles.
 2 • Pull the slide bar out to attach your lock. This model will accommodate breakers with an overall width of 5/8" (45mm).
Remember, the breaker must be in the "off" position before installing.



CB03 This model is our single breaker lockout for circuit breakers that do not have a recessed hole.
 1 • To install, the breaker must be in the "off" position. Place the breaker over the toggle.
 2 • Insert your screwdriver (star type) into the hole, tighten the screws well.
 3 • Insert your lock or tag and close. Make sure everything is tight.
 This model will accommodate circuit breakers with an overall width of 9/16" (14mm).
Remember, the breaker must be in the "off" position before installing.



CB04 Our double pole breaker lockout requires that there be two toggles connected together with a cross bar.
 1 • Pull the slider bar and place the breaker lockout over the breakers.
 2 • Push back the slider bar and put your lock on aligned holes.
 This model will accommodate double or triple breakers.
Remember, the breaker must be in the "off" position before installing.



TECHNICAL DATA

DIMENSIONS: C-SAFE CIRCUIT BREAKER LOCKOUTS

Models	Length A	Height B	Width C	Lock Hole D
CB01	2.300" 58 mm.	0.850" 22 mm.	1.100" 28 mm.	0.300" dia 7.5 mm.
CB02	2.625" 66 mm.	1.875" 48 mm.	1.000" 25 mm.	0.300" dia 7.5 mm.
CB03	2.300" 58 mm.	0.750" 19 mm.	1.000" 25 mm.	0.340" 8.5 mm.
CB04	2.375" 60 mm.	1.000" 25 mm.	1.865" 47.5 mm.	0.375" 9.5 mm.

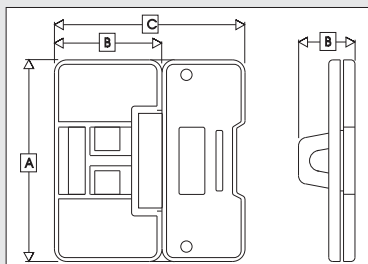
ELECTRICAL SWITCH LOCKOUT

THE ULTIMATE PROTECTION WITH THE E-SAFE LOCK-A-SWITCH

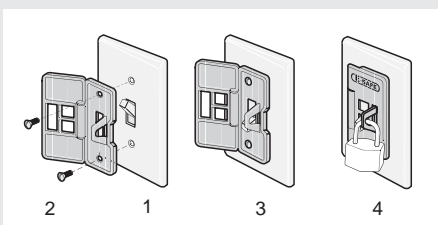


E-SAFE "LOCK-A-SWITCH" This easy to install device can be used with most mounted switches. It can be used to lock the switch in either the "on" or "off" position. (Install using existing screws). Standard package: 6 devices.

- Remove screws from switch plate.
- Adjust "E-SAFE" locking device over the switch plate and install it on switch.
- Position switch to desired position.
- Close "E-SAFE" device and put on your padlock and tag.



ASSEMBLY INSTRUCTIONS



TECHNICAL DATA

Dimensions: E-SAFE LOCK-A-SWITCH

Model	Height A	Width Close B	Width Open C
ES01	3.000" 76 mm.	1.625" 42 mm.	3.000" 76 mm.