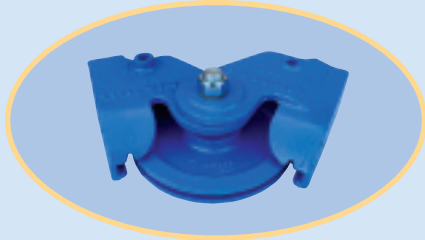


Chain-O-Flex Components



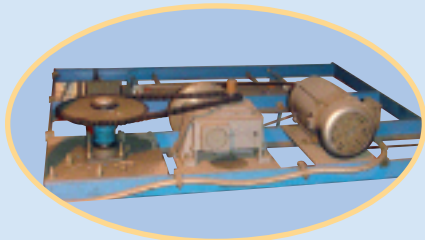
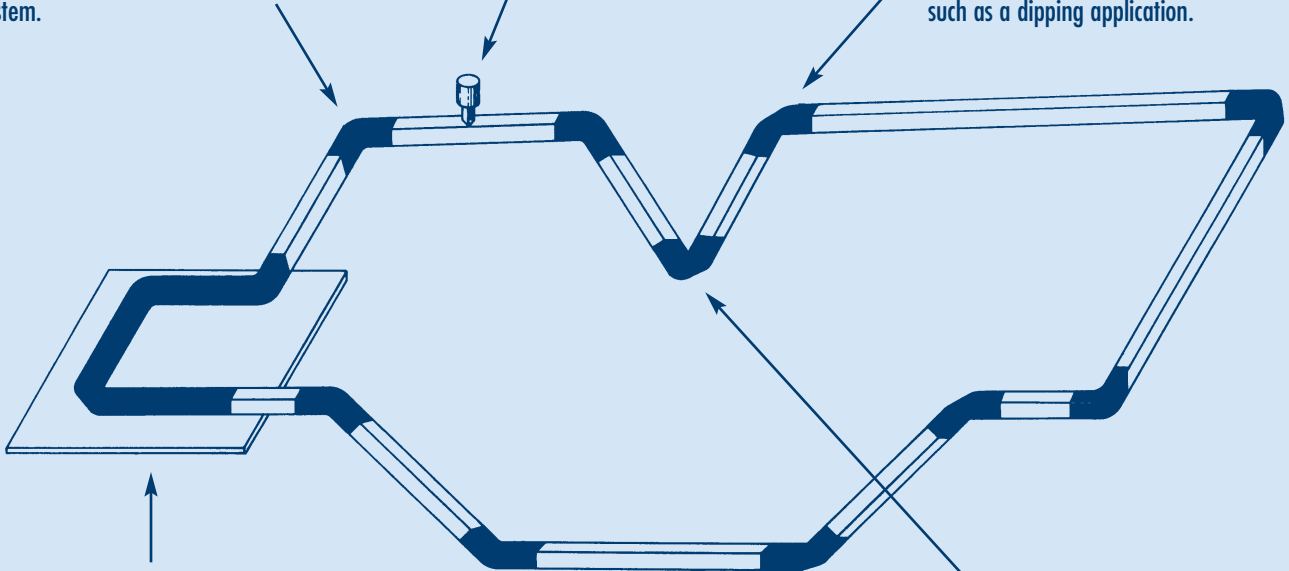
HORIZONTAL CORNER/MODEL 570:
The horizontal corners adjust from 20° to 180° which allows flexibility for your individual system.



OILER WITH HANGER/MODEL 540:
Pulsating oiler automatically lubricates chain.



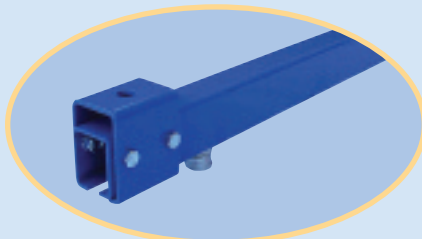
TOP VERTICAL CORNER/MODEL 550:
This corner adjusts from 0° to 180° and is used when a change in elevation is required such as a dipping application.



DRIVE UNIT/MODEL 5360: This standard universal drive unit comes with a 1 HP motor and a variable speed range from 4 to 12 FPM. Specialty voltage.



BOTTOM VERTICAL CORNER/MODEL 560: Bottom vertical also adjusts from 0° to 180°. Used to return product to higher level.



TRACK/MODEL 520: This 10 ga. heavy duty straight track is standard in 10 ft. lengths. Track length can be shortened to fit your exact requirements.