

# SQUAD SUITS®



## Model SS39 and SS40

### Squad Suits®

**Fabric:** 6.5 oz. per square yard  
(SQUAD CLOTH™ 65% polyester/35% cotton)

- pleated bi-swing back with elasticized waist
- heavy-duty, two-way brass zipper
- adjustable hook and loop belt closure
- two slanted breast pockets have zippers; left breast pocket has a pencil slot
- two inserted side pockets
- two rear patch pockets with a zipper on the left pocket
- large utility pocket on right leg
- side access to pants
- reinforced knees
- zippered leg bottoms with adjustable snaps
- loose badge tab (in pocket)



**Model  
SS39**

1015  
Royal

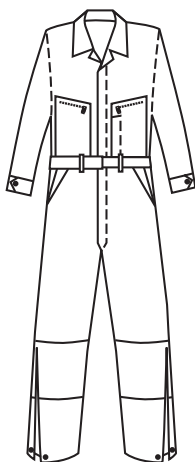
1045  
Red

**Model  
SS40**

1010  
Midnight

1039  
Black

SS39 & SS40



Squad Suit®

Garments shown above with optional trim.

#### SQUAD SUIT® SIZES:

	X-Small	Small	Medium	Large	X-Large	2X-Large	3X-Large
Sizes:	30-32	34-36	38-40	42-44	46-48	50-52	54-56
Short:	•	•	•	•	•		
Regular:	•	•	•	•	•	•	•
Tall:			•	•	•	•	•
X-Tall:			•	•	•	•	

Short: 5'4"-5'7" Regular: 5'7½"-5'11" Tall: 5'11½"-6'3" X-Tall: 6'3½"-6'6"

NOTE: Additional sizes are available in some colors.