



## **ASME Expansion Tanks Series "B-LA" Bladder Tanks**

- Increases System Performance
- Reduces Oxygen Corrosion
- Prevents Waterlogging
- Replaceable Bladder
- Meets ASME Section VIII, Division 1 Standards
- 125 PSI Working Pressure Standard
- High Maximum Operating Temperature 240°F
- Seismic Restraints Available
- Sight Glass Available



# Series "B-LA" Bladder Tanks

## DESCRIPTION

Series "B-LA" expansion tanks are ASME rated pre-charged bladder-type pressure vessels. The Series "B-LA" tank is designed to absorb the expansion forces of heating/cooling system water while maintaining proper system pressurization under varying operating conditions. The heavy duty bladder contains system water thereby eliminating tank corrosion and waterlogging problems.

## OPERATING DATA

Maximum working pressure . . . . . 125 PSI (862kPa)  
 Maximum operating temperature . . . . . 240°F (115°C)

## MATERIALS OF CONSTRUCTION

System Connection: Forged Steel  
 Shell: Carbon Steel  
 Bladder: Heavy Duty Butyl Rubber  
 Designed and Constructed per ASME Section VIII, Division 1

Dimensions: Gallons (Ltrs.), Inches (mm), Weights: LBS. (KG)

PART NUMBER	MODEL NUMBER	TANK VOLUME	ACCEPTANCE VOLUME	A	B	C	D	APPROX. SHPG. WT.	APPROX. WT. 100% FULL*
116782	B-35LA	10 (38)	10 (38)	10 (254)	37 <sup>5</sup> / <sub>16</sub> (948)	1	3/4	65 (29)	144 (67)
116783	B-50LA	13 (50)	11 (40)	12 (305)	37 <sup>1</sup> / <sub>16</sub> (941)			72 (33)	164 (74)
116784	B-85LA	22 (85)		16 (406)	34 <sup>5</sup> / <sub>16</sub> (872)			88 (40)	270 (122)
116785	B-100LA	26 (100)		39 (991)	94 (43)			308 (140)	
116786	B-130LA	34 (130)	27 (100)	20 (508)	34 <sup>11</sup> / <sub>16</sub> (881)			130 (59)	410 (186)
116787	B-165LA	44 (165)		39 <sup>11</sup> / <sub>16</sub> (1008)	140 (63)			503 (228)	
116788	B-200LA	53 (200)		40 <sup>7</sup> / <sub>8</sub> (1039)	192 (87)			629 (285)	
116789	B-300LA	80 (300)	53 (200)	24 (610)	56 (1423)			230 (104)	890 (404)
116790	B-400LA	106 (400)		68 <sup>5</sup> / <sub>8</sub> (1743)	274 (124)			1148 (521)	
116791	B-500LA	132 (500)		82 <sup>1</sup> / <sub>2</sub> (2096)	308 (140)			1397 (634)	
116792	B-600LA	158 (600)		30 (762)	67 (1702)			442 (200)	1745 (791)

Dimensions subject to change. Not to be used for construction purposes \*Approximate weight 100% full occurs if bag fails or if air charge is lost. Refer to submittals for optional seismic restraints.

## TYPICAL HYDRONIC HEATING/COOLING APPLICATION

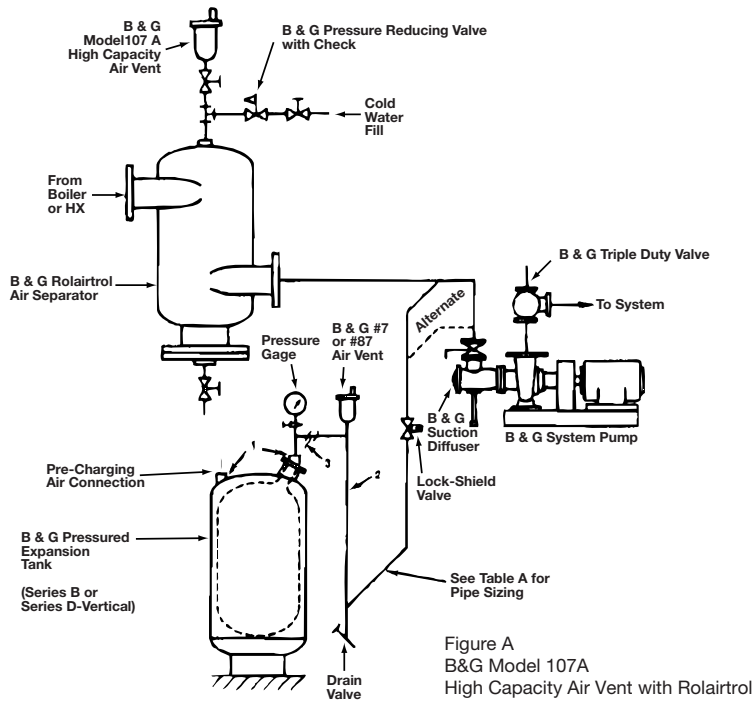
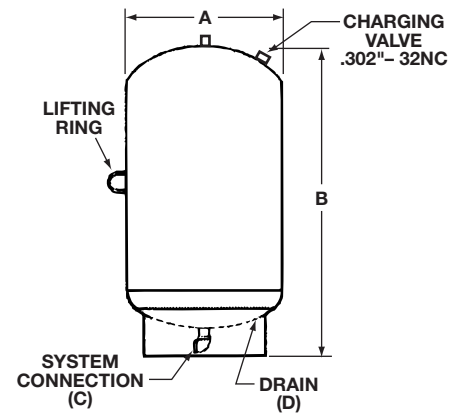


Figure A  
 B&G Model 107A  
 High Capacity Air Vent with Rolairtrol  
 Air Separator and Series "B" or "D"  
 Vertical Pressurized Expansion Tank



NOTE: Tanks are factory pre-charged at 12 PSI (83kPa).