

R66P25 Series 25-Pair Protection

■ Outside Plant for
Business-Critical Continuity

Key Features

- Optional quick-clip, RJ21, or stub interfaces meet a variety of installation requirements
- Provides FCC RJ21X demarcation for separation of telco central office pairs from customer premises equipment
- Universal hold-down keeps connectorized RJ21s mated
- Compact design is high density and has the same mounting dimensions as the standard 66M150
- Mounts on standard 89-type brackets for dynamic allocation of wires on wall- or frame-mounted applications
- UL Listed to meet or exceed documented performance levels

Description

The R66P25 series of indoor blocks offers protection for 25-pair in a compact, versatile, and cost-effective unit. These blocks have the same mounting dimensions as a 66M150 block, and can be mounted on a wall, backboard, or 89-type bracket (Emerson R891 Series and R89B).

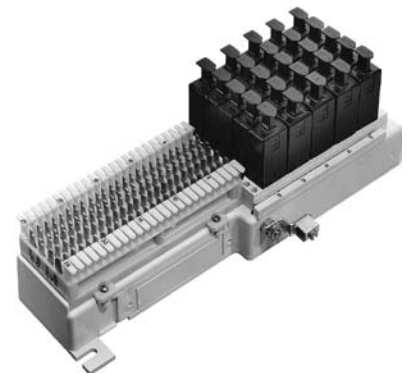
Standard network cable termination options are either quick-clips or a cable stub. Customer premise equipment termination options are quick-clips or 50-position RJ21 connectors.

Unstripped solid 20 to 26-gauge (.4 to .8 mm) conductors can be easily terminated using an industry standard 714-type punch-down tool (Emerson R714B). Each block is supplied with an integral fanning strip molded on one side of the base, marked every five rows to simplify pair identification.

Units may be ordered with or without factory-installed 5-pin protector modules. To order the R66P25 with factory-installed protection, add selected Emerson protector module catalog numbers (R3B1EJZ, 3GUVS, etc.) to the catalog number. The R66P25 series will accept carbon, gas, or solid-state 5-pin protector modules. One module provides protection for one pair, and each unit can accommodate 25 modules. Each R66P25 is also supplied with a ground connector for a 6AWG solid copper wire.

Application

The R66P25 series of protected blocks for indoor use provide protection, protection/demarcation, and sneak current fuse protection. Intended for utilization in small businesses, multiple dwelling units (MDUs), and medium-density commercial or industrial buildings, the R66P25 series is used by regulated telcos, interconnects, and contractors.



R66P25QC
Shown with Modules

R66P25 Series 25-Pair Protection

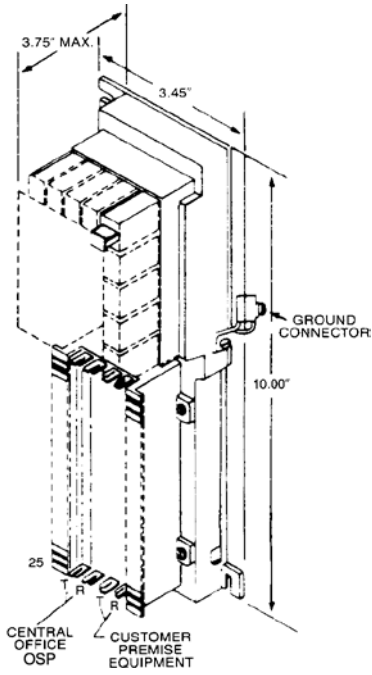


Figure 1

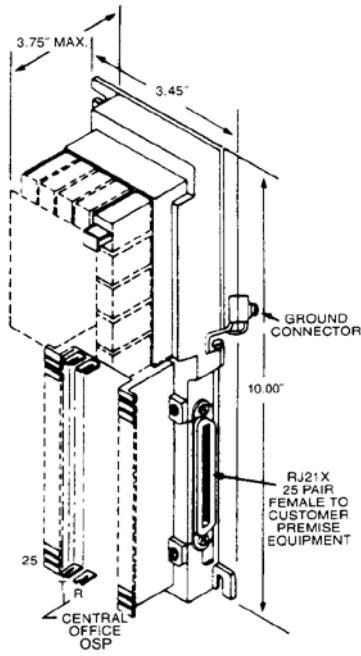


Figure 2

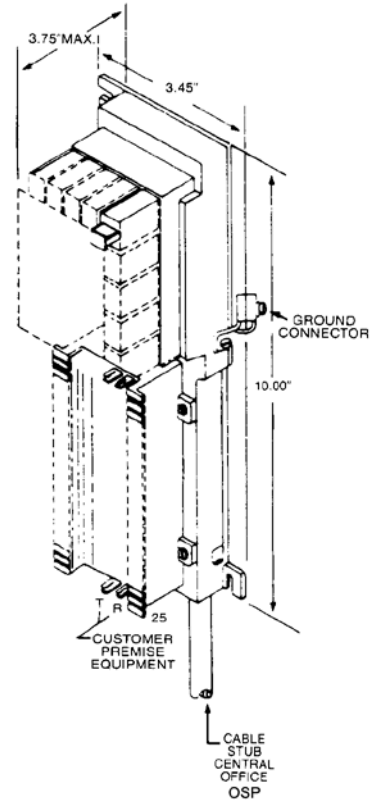


Figure 3

R66P25 Series 25-Pair Protection

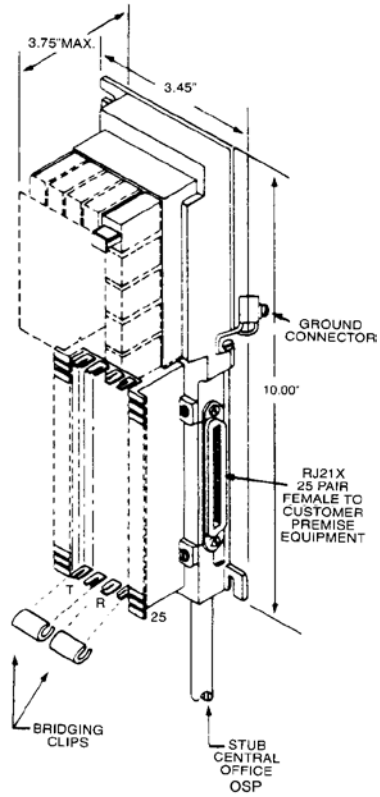


Figure 4

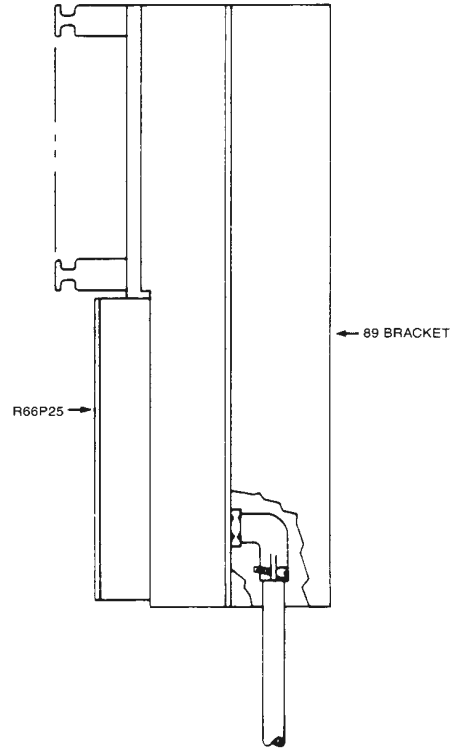


Figure 5
R66P25 with R891 Series Mounting Bracket

R66P25 Series 25-Pair Protection

Ordering Information

Catalog Number	Part Number	Application	— Termination Style — In ^{*2} / Out ^{*3}	R891 Bracket Required ^{*4}	Fig. Number
R66P25QC	F015360	Protection	QC / QC	Optional	1
R66P25QCC	F015361	Protection	QC / RJ21	Optional	2 Receptacle
R66P25QCCR3B1EJZ	F015421	Protection e/w R3B1EJZ	QC / RJ21	Optional	2 Receptacle
R66P25QCP	F015391	Protection	QC / RJ21 Plug	Optional	2
R66P25QCR3B1EJZ	F015432	Protection e/w R3B1EJZ	QC / QC	Optional	1
R66P25QCS10	F015362	Protection	10-ft. stub / QC	√	3,5
R66P25QCS20	F015363	Protection	20-ft. stub / QC	√	3,5
R66P25QCVS	F015409	Protection e/w 6U2VS	QC / QC	Optional	1
R66P25S10CD ^{*1}	F015401	Protection/demarcation	10-ft. stub / RJ21 Receptacle	√	4,5
R66P25S20CD ^{*1}	F015402	Protection/demarcation	20-ft. stub / RJ21RJ21 Receptacle	√	4,5

Abbreviations:

QC = Quick-connect clips or 66 Clips

RJ21 = 50-position RJ21 connector with universal hold-down, mounted for bottom feed

stub = Cable stub, 25-pair, 24-gauge cable

^{*1} 50 2-position bridging clips (Emerson RA1) are included. Bridging clips are required to connect protection to customer premises equipment. Bridging is necessary

^{*2} Central office or network cable pairs across the two outside vertical rows. (see Figure 4)

^{*3} Customer premises equipment or distribution pairs

^{*4} R891 Series brackets must be ordered separately

NOTE: See UL card for usage limitations in meeting UL Spec No. 497 or 497A.

Accessories

Catalog Number	Part Number	Description
R891S50	F1003918	Stand-off bracket
RA1	F005170	Bridging clips
R66MHCO2	F015380	Hinged covers, 5-in. orange
R66MHCG2	F015381	Hinged covers, 5-in. gray
P17812	F517812	Ground connector
P48723	F548723	Universal hold-down

NOTE: For additional brackets, covers, bridging clips, etc. see the Accessories section of this catalog.

Emerson Network Power.

The global leader in enabling business-critical continuity.

- AC Power
- Embedded Power
- Precision Cooling
- Connectivity
- Monitoring
- Racks & Integrated Cabinets
- DC Power
- **Outside Plant**
- Services
- Embedded Computing
- Power Switching & Controls
- Surge Protection

Emerson Network Power Energy Systems

4350 Weaver Parkway, Warrenville, IL 60555
Toll Free: 800-800-1280 (USA and Canada)
Telephone: 440-246-6999 Fax: 440-246-4876
Web: EmersonNetworkPower.com/EnergySystems

© 2007 Emerson Network Power Energy Systems, North America, Inc. All rights reserved.

The Emerson logo is a trademark and a service mark of Emerson Electric Co. Emerson Network Power is a division of Emerson Electric Co.

Printed in USA

