

2500FRAME2 (One Vertical) Single-Sided Distribution System

■ Outside Plant for
Business-Critical Continuity

Key Features

- Single-sided system allows all frame administration to be performed on one side
- Common jumper trough permits short jumpers for labor savings
- Modular design is easily expanded
- Frame is factory pre-assembled for quick, easy installation
- Versatile block mounting can be configured to all pair requirements
- Can be used as double-sided aisle mount

Description

The 2500FRAME2 from Emerson Network Power Communications is a single vertical, single-sided modular distribution system. Its versatile configuration can meet a variety of specific pair sizing requirements.

For protection, the frame mounts Emerson Communications' R399 100-pair central office connectors. For equipment terminations, the frame will mount any conventional front-facing line terminal blocks with 8-in. mounting centers, including 89 type blocks, the Emerson Communications' 2376 block, or the Emerson Communications' Block 32 and "C" series. For building entrance applications, the 2500FRAME2 accommodates 66-clip termination.

The 2500FRAME2 is a single vertical floor/wall mounted frame comprised of one vertical, one horizontal jumper trough for wire distribution to adjacent verticals, multiple jumper retainers for wire management, and top trough and bottom guide for conventional wire routing.

Each vertical of the 8-ft. frame has ten block positions, which allows a maximum capacity of 1,000 protected pairs per vertical. What makes the frame so flexible is that either a R399 protected terminal block, a front facing line terminal block, or a horizontal jumper trough can be mounted in any block position, allowing for any combination of protected and equipment blocks on each frame.

Multiple frames can be suitably spaced and connected together to meet the required application size. Each frame module has jumper access to adjacent modules through the use of horizontal or top jumper troughs.

Splice brackets are provided for multiple frame installations to tie them together on 9-in. centers.

This frame is also available in a 7-ft. version (25007FRAME2), with a capacity of nine block positions.

Application

The 2500FRAME2 is designed specifically for small frame applications from 100 pair up to 15,000 pair. This frame provides optimum protection/cross connection capabilities for:

Central Office
CLEC Applications
Co-Locations
Building Entrance Installations
Remote Terminals



Three Frames Side-by-side


EMERSON
Network Power

2500FRAME2 (One Vertical) Single-Sided Distribution System

Ordering Information & Accessories

Catalog Number	Part Number	Description	— Dimensions —		
			H	W	D
2500FRAME2	F151322	8-ft. Frame module	8-ft.	8-in.	14.9-in.
25007FRAME2	F151319	7-ft. Frame module	7-ft.	8-in.	14.9-in.
2500MB	F150679	Mounting bracket for terminal blocks—one needed for each terminal block. Required for 89-style front facing blocks. Block 32 or “G” series terminal blocks can use either the 2500MB or 2500SB swivel bracket.			
2500SB	F151257	Swivel mount bracket for terminal blocks. Only for use with Block 32 or “G” series terminal blocks.	7.9-in.	1.69-in.	1.38-in.
2500IGND2	F1004497	Isolated Ground Kit			

NOTE 1: Mounts all R399 and 89 type blocks.

NOTE 2: The R399 connector and the 2376 and 2378 blocks mount directly to the frame.

NOTE 3: Each Block 32, “G” series or 89-style front facing line terminal block requires a mounting bracket.

NOTE 4: Line terminal blocks are mounted vertically.

NOTE 5: Each Frame Module has 1 horizontal trough, which can mount in any block position.

NOTE 6: Top trough and bottom wire guide, one included with each unit.

NOTE 7: Ground bar & ground splice included.

NOTE 8: Adjacent frames should be mounted on 8-in. centers, but in 9-in. centers are recommended.

Capacities

2500FRAME2 (8-ft. frame)

1 vertical per frame module.

Each vertical can mount ten (10) R399s.

(9 if using jumper through)

Each vertical can mount ten (10) 89-style, Block 32, or “G” series terminal blocks.

(9 if using jumper through)

Each vertical can mount six (6) 2376 or 2378 blocks.

25007FRAME2 (7-ft. frame)

1 vertical per frame module.

Each vertical can mount nine (9) R399s.

(8 if using jumper through)

Each vertical can mount nine (9) 89-style or Block 32 or “G” series terminal blocks.

(8 if using jumper through)

Each vertical can mount five (5) 2376 or 2378 blocks.

2500SB Swivel Bracket:

If the 2500SB swivel bracket is used to mount the Block 32 or “G” series terminal blocks, then a horizontal trough can only be located in block positions #1, #3, #4, #5, and #10 counting from the top.

2500SB Swivel Bracket:

If the 2500SB swivel bracket is used to mount the Block 32 or “G” series terminal blocks, then a horizontal trough can only be located in block positions #1, #2, #3, and #8.

Emerson Network Power.

The global leader in enabling business-critical continuity.

- AC Power
- Embedded Power
- Precision Cooling
- Connectivity
- Monitoring
- Racks & Integrated Cabinets
- DC Power
- **Outside Plant**
- Services
- Embedded Computing
- Power Switching & Controls
- Surge Protection

Emerson Network Power Energy Systems

4350 Weaver Parkway, Warrenville, IL 60555
Toll Free: 800-800-1280 (USA and Canada)
Telephone: 440-246-6999 Fax: 440-246-4876
Web: EmersonNetworkPower.com/EnergySystems

30 : Enterprise

© 2007 Emerson Network Power Energy Systems, North America, Inc. All rights reserved.

The Emerson logo is a trademark and a service mark of Emerson Electric Co. Emerson Network Power is a division of Emerson Electric Co.

Printed in USA



OSPDS-100300 / 0705

2500 Frame (Two Verticals) Single-Sided Distribution System

■ Outside Plant for
Business-Critical Continuity

Key Features

- Single-sided system allows all frame administration to be performed on one side
- Common jumper trough permits short jumpers for labor savings
- Modular design is easily expanded
- Frame is factory pre-assembled for quick, easy installation
- Versatile block mounting can be configured to all pair requirements

Description

For protection, the frame mounts R399 100-pair central office connectors. For equipment terminations, the frame will mount the Emerson Block 32, Emerson 2376 block, or front-facing line terminal blocks with 8-in. mounting centers. For building entrance applications, the 2500 frame accommodates the R366 connector with 66-clip termination.

The 2500 frame is comprised of two adjacent verticals separated by a vertical jumper trough. Each vertical of the 8-ft. frame has ten block positions, which allows a maximum of 1000 protected pairs per vertical. What makes the frame so flexible, is that either an R399, a line terminal block, or a horizontal jumper trough can be mounted in any block position, allowing for any combination of protected and equipment blocks on each frame.

Multiple frames can be lined up and connected together to meet the required application size. Each frame module has jumper access to adjacent modules.

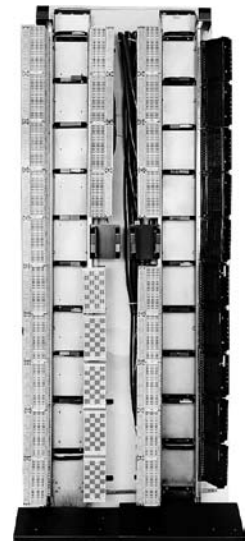
Application through the use of horizontal jumper troughs.

The 2500 frame is also available in a 7-ft. version, which has eight block positions.

Application

Multiple frames can be lined up and connected together to meet the required application size. Each frame module has jumper access to adjacent modules through the use of horizontal jumper troughs.

The 2500 frame is also available in a 7-ft. version, which has eight block positions.



Two 2500 Frames Side-by-side

2500 Frame (Two Verticals) Single-Sided Distribution System

Ordering Information & Accessories

Catalog Number	Part Number	Description	— Dimensions —		
			H	W	D
2500FRAME	F151250	8-ft. Frame module	8-in.	16-in.	15.5-in.
25007FRAME	F151276	7-ft. Frame module	7-in.	16-in.	15.5-in.
2500MB	F150679	Mounting bracket for terminal blocks—one needed for each terminal block. Required for 89-style front facing blocks. Block 32 terminal blocks can use either the 2500MB or 2500SB swivel bracket.			
2500SB	F151257	Swivel mount bracket for terminal blocks can only be used with Block 32 terminal blocks.			
2500IGND2	F1004497	Isolated Ground Kit			

NOTE 1: The right vertical of the frame requires right mounted connectors (RZ399) and right mounted vertical terminal blocks.

NOTE 2: The R399 connector and the 2376 and 2378 blocks mount directly to the frame.

NOTE 3: Each Block 32 or 89-style front facing line terminal block requires a mounting bracket.

NOTE 4: Line terminal blocks are mounted vertically.

NOTE 5: Each Frame Module has 2 horizontal troughs.

NOTE 6: Ground bar & ground splice included.

NOTE 7: Adjacent frames should be mounted on 20-in. centers.

Capacities

2500FRAME (8-ft. frame)

2 verticals per frame module.

Each vertical can mount ten (10) R399s.
(9 if using jumper through)

Each vertical can mount ten (10) 89-style or Block 32 terminal blocks.

(9 if using jumper through)

Each vertical can mount six (6) 2376 or 2378 blocks.

25007FRAME (7-ft. frame)

2 verticals per frame module.

Each vertical can mount eight (8) R399s.
(7 if using jumper through)

Each vertical can mount eight (8) 89-style or Block 32 terminal blocks.

(7 if using jumper through)

Each vertical can mount five (5) 2376 or 2378 blocks.

2500SB Swivel Bracket:

If the 2500SB swivel bracket is used to mount the Block 32 terminal blocks, then a horizontal trough can only be located in block positions #1, #3, #4, #5, and #10 counting from the top.

2500SB Swivel Bracket:

If the 2500SB swivel bracket is used to mount the Block 32 terminal blocks, then a horizontal trough can only be located in block positions #1, #2, #3, and #8.

Emerson Network Power.

The global leader in enabling business-critical continuity.

- AC Power
- Embedded Power
- Precision Cooling
- Connectivity
- Monitoring
- Racks & Integrated Cabinets
- DC Power
- **Outside Plant**
- Services
- Embedded Computing
- Power Switching & Controls
- Surge Protection

Emerson Network Power Energy Systems

4350 Weaver Parkway, Warrenton, IL 60555
Toll Free: 800-800-1280 (USA and Canada)
Telephone: 440-246-6999 Fax: 440-246-4876
Web: EmersonNetworkPower.com/EnergySystems

32 : Enterprise

© 2007 Emerson Network Power Energy Systems, North America, Inc. All rights reserved.

The Emerson logo is a trademark and a service mark of Emerson Electric Co. Emerson Network Power is a division of Emerson Electric Co.

Printed in USA



OSPDS-100500 / 0906