

MBHU Masonry Beam Hanger

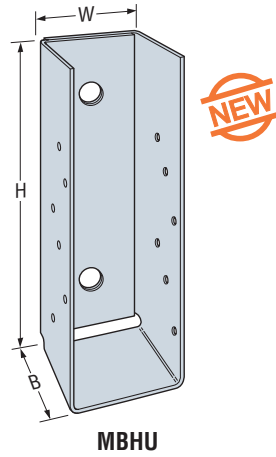
The new MBHU beam hanger provides a face-mounted solution for connecting beams to masonry or concrete walls. A non-welded, one-piece connector, the MBHU is suitable for solid sawn and engineered beams as well as trusses. Installation is simplified because the Titen HD® screw anchor and Strong-Drive® SDS screws are included with the hanger. Since the Titen HD anchor is installed after the wall is built, locating the anchor in the right spot is easier than with cast-in-place bolts.

MATERIAL: 10 gauge

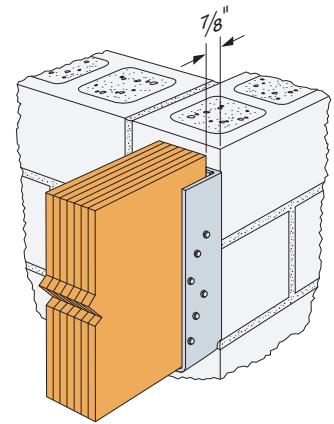
FINISH: Galvanized

INSTALLATION: • Use all specified fasteners (included).

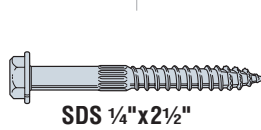
- Attach hanger to a concrete or grouted CMU wall using Titen HD anchors. Note the following:
 - Drill holes using drill bits equal in diameter to the specified Titen HD anchor.
 - Holes shall be drilled 1/2" deeper than the specified Titen HD length (i.e. 5 1/2" for a 5" long Titen HD anchor)
 - Caution: Oversized holes in the base material will reduce or eliminate the mechanical interlock of the threads with the base material and will reduce the anchor's load capacity.
- Titen HD is not recommended for exposed exterior applications.
- Provide moisture barrier between beam and wall per jurisdictional requirements.



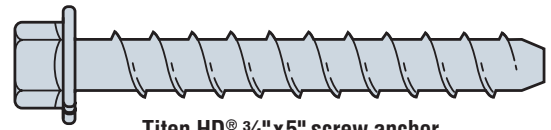
MBHU



Typical MBHU Installation



SDS 1/4"x2 1/2"



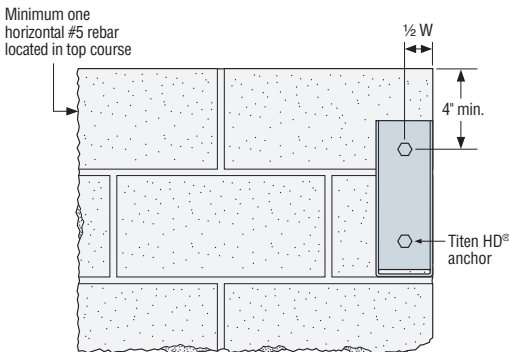
Titen HD® 3/4"x5" screw anchor

Model No.	Dimensions	
	Width (W) (in.)	Height (H) (in.)
MBHU3.56/9.25KT	3 3/16	9 1/4
MBHU3.56/11.25KT	3 3/16	11 1/4
MBHU3.56/11.88KT	3 3/16	11 7/8
MBHU3.56/14KT	3 3/16	14
MBHU3.56/16KT	3 3/16	16
MBHU3.56/18KT	3 3/16	18
MBHU5.50/9.25KT	5 1/2	9 1/4
MBHU5.50/11.25KT	5 1/2	11 1/4
MBHU5.50/11.88KT	5 1/2	11 7/8
MBHU5.50/14KT	5 1/2	14
MBHU5.50/16KT	5 1/2	16
MBHU5.50/18KT	5 1/2	18

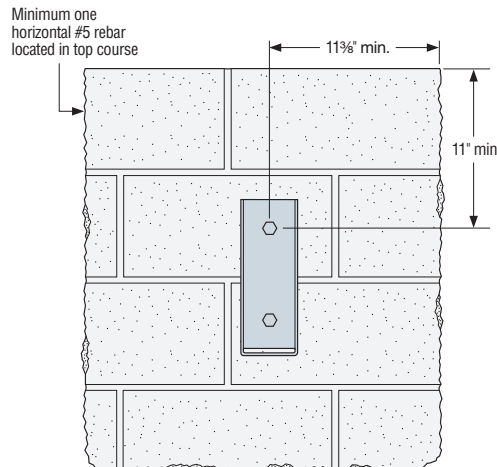
Series Model No.	Ga	Dimensions (in.)			Fasteners		Allowable Loads End of Wall / Outside Corner DF/SP				Allowable Loads Away from Edge DF/SP	
		W	H	B	CMU/Concrete	Joist	CMU		Concrete		CMU/Concrete	
							Uplift ³	Download	Uplift	Download	Uplift	Download
MBHU3.56	10	3 3/16	9 1/4 to <14	3 1/2	2 - 3/4" x 5"	12 - 1/4" x 2 1/2"	1720	2440	2715	4190	2210	4005
			14 to 18				1720	2440	2715	4190	3345	6065
MBHU5.50	10	5 1/2	9 1/4 to <14	3 1/2	2 - 3/4" x 5"	12 - 1/4" x 2 1/2"	1720	2440	2715	4190	2210	4005
			14 to 18				2175	3260	3485	6970	3345	6065

1. Each MBHU hanger includes (2) 3/4"x5" Titen HD® anchors and (12) 1/4"x2 1/2" Strong-Drive® SDS screws.

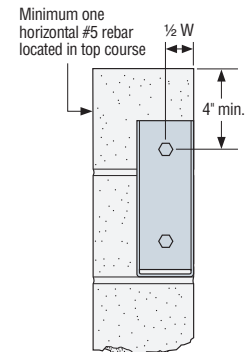
1. Uplift loads have been increased 60% for wind or earthquake loading with no further increase allowed; reduce where other loads govern.
2. Minimum CMU compressive strength f'_m shall be 1500 psi and concrete compressive strength f'_c shall be 2500 psi.
3. Structural composite lumber (SCL) shall have a minimum specific gravity of 0.5.
4. Allowable loads only apply to installation on 8" nominal grouted CMU walls, with minimum one horizontal #5 rebar located in the top course.
5. Products shall be installed such that the Titen HD® anchors are not exposed to the weather.
6. Allowable loads are based upon the tested ultimate load with a safety factor of 3.



Minimum Load
(End of wall face)



Maximum Load
(Away from end or edge of wall)



Minimum Load
(On end of wall)