



“F” FISSURED Panels/  
DOWN CENTRICITEE DXT Suspension System

**LEED Credits**  
Recycled Content: 71%

MR				EQ		
Waste Reduction <sup>1</sup>	Recycled Content	Regional Materials <sup>2</sup>	Rapidly Renewable Materials	Low-Emitting Materials	Daylight and Views	Acoustical Performance
●	●	●	●	●	●	●

**Features and Benefits**

- Cast product with durable surface that resists scrapes commonly caused by accessing the ceiling plenum.
- Combine 12”x12” tile with the DOWN® brand DX®/DXL™ concealed suspension system to create a nearly monolithic ceiling surface.

**Applications**

- Administrative offices
- Schools
- Financial institutions
- Religious buildings

**Substrate**

- Cast mineral fiber



Medium-textured panel

Call 888 874.2450 for samples



White

# "F" Fissured™

Web Sites: [usg.com](http://usg.com)  
[usgdesignstudio.com](http://usgdesignstudio.com)  
[sustainableceilings.com](http://sustainableceilings.com)  
[seismicceilings.com](http://seismicceilings.com)

Technical Service 800 USG.4YOU  
 Samples/Literature 888 874.2450  
 Samples/Literature Fax 888 874.2348  
 Customer Service 800 950.3839

See [usg.com](http://usg.com) for  
 the most up-to-date  
 product information.

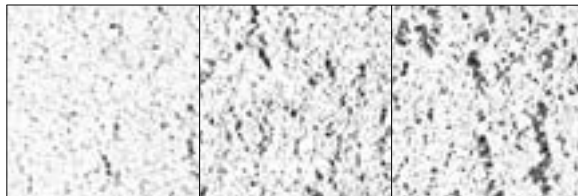
UL Classified												
Edge	Panel Size	Class	Item No.	NRC	CAC Min.	LR <sup>3</sup>	Color	Grid Options	VOC Emissions	Abuse-Resistant	Recycled Content <sup>4</sup>	Panel Cost
"F" FISSURED Panels	SQ 	2'x2'x3/4" Foil-Back	Class A	131	.70 	35	.79	White	A, B, C	Zero 		71% \$\$
		2'x4'x3/4" Foil-Back	Class A	135	.70 	35	.79	White	A, B	Zero 		71% \$\$
	SL 	2'x2'x3/4" Foil-Back	Class A	132	.70 	35	.79	White	D	Zero 		71% \$\$
		2'x4'x3/4" Foil-Back	Class A	136	.70 	35	.79	White	D	Zero 		71% \$\$
	FL 	2'x2'x3/4" Foil-Back	Class A	133	.70 	35	.79	White	E, F, G	Zero 		71% \$\$
		2'x4'x3/4" Foil-Back	Class A	133	.70 	35	.79	White	E, F, G	Zero 		71% \$\$
"F" FISSURED Tile <sup>5,6</sup>	BESK 	12"x12"x3/4"	Class A	102	.70 	25	.79	White	H	Zero 		71% \$\$\$\$
	SESK 	12"x12"x3/4"	Class A	101	.70 	25	.79	White	I	Zero 		71% \$\$\$\$

### Legend

#### Zero Emissions (VOC Class)

Classified as zero-emitting per standards established by the Collaborative for High-Performance Schools (CHPS), following California Specification 01350 testing methods.

	A DX®/DXL™	B DXW™	C CENTRICITEE™ DXT	D DX/DXL	E CENTRICITEE DXT	F FINELINE® DXF	G FINELINE® 1/8 DXFF	H DX®/DXL™ Concealed	I DX/DXL Concealed
Grid Profile Options									



Composite of "F" FISSURED ceiling products shows range to be expected in a production lot, and possibly in the same panel or tile. Ranges are random and cannot be specified. Texture appearance will vary based on ceiling height, installation methods, and natural variations of the product.

### Physical Data/ Footnotes

**Product literature**  
 Data sheet: SC1816

**ASTM E1264 classification**  
 Type III, Form 4, Pattern D

**ASTM E84 surface burning characteristics**  
 Class A  
 Flame spread: 25  
 Smoke developed: 50

**Weight**  
 1.75 lb./sq. ft.

**Thermal resistance**  
 R-1.7

**Maximum backloading**  
 See Warranty for details.

#### Maintenance

Can be cleaned easily with a soft brush or vacuum.

#### Texture

The manufacturing process for cast ceiling panels creates natural, subtle texture variations, which is a distinguishing feature of these products. Because of potential variances between production dates, we recommend ordering and installing cast products by production lot number.

#### Footnotes

1. Applies when USG acoustical ceilings recycling program is utilized.
2. Dependent on location; see Sustainability selector.
3. LR values are shown as averages.
4. For details, see Sustainability selector.
5. Contact USG for adhesive recommendations for 12"x12" glue-up applications.
6. Not UL Classified for acoustics.



Manufactured by USG Interiors, Inc.  
 550 West Adams Street  
 Chicago, IL 60661

The following are trademarks of USG Interiors, Inc. or a related company: CENTRICITEE, CLIMAPlus, DONN, DX, DXF, DXFF, DXL, DXT, DXW, "F" FISSURED, FINELINE, USG.

Safety First! Follow good safety/industrial hygiene practices during installation. Wear appropriate personal protective equipment. Read MSDS and literature before specification and installation.

SC1816/rev. 3-08  
 © 2008, USG Interiors, Inc.  
 Printed in U.S.A.