

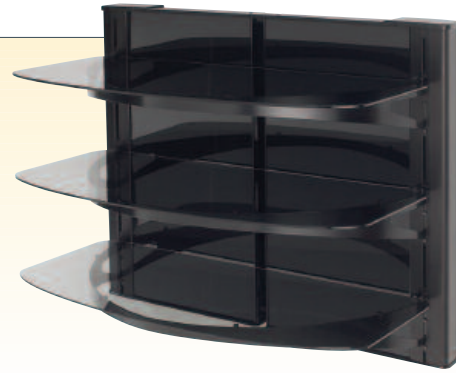


Platinum AV Foundations™ model PFAV30-B1 shown with HTB Speaker Foundations™ model HTB3b

VERTICAL AV FOUNDATIONS™

Modern meets practical with Vertical AV Foundations™

Sanus Vertical AV Foundations™ combine the storage capacity of a cabinet with the discreet look of a low-profile wall mount, creating a versatile, stylish piece that can virtually fade into the woodwork. These wall-mounted AV stands feature **adjustable tempered-glass shelves** and generous **cable management channels**, so they're perfect for mounting directly under a TV. And some models offer **interchangeable glass and wood back panels** in case you change your décor. It's the most practical piece of art you'll ever own.



VF5023-B1



« Strong tempered-glass shelves can be vertically adjusted to accommodate any AV component arrangement



« VF5022 and VF5023 include interchangeable black glass and wood back panels to match any home décor




« VF2012 and VF2022 feature post-installation height adjustment to mount directly below television




« Generous cable management channels conceal and route power cables and signal wires




Model VF2022-B1 shown with VisionMount® model LT25

MODEL VF5023-B1 	DESCRIPTION Decorater Panel Three-shelf AV Wall-Mounted Furniture; Includes 2 wood and 2 glass back panels	
	PRODUCT DIMENSIONS (w x d x h) 38.4" x 20.8" x 31.5" 97.5 x 52.8 x 80 cm	TOP SHELF SIZE/CAPACITY 38.4" x 17" / 75 lbs. 96.5 x 43.1 cm / 34 kg
	MID SHELF SIZE/CAPACITY 38.4" x 17" / 75 lbs. 96.5 x 43.1 cm / 34 kg	BOTTOM SHELF SIZE/CAPACITY 38.4" x 17" / 75 lbs. 96.5 x 43.1 cm / 34 kg

MODEL VF5022-B1 	DESCRIPTION Decorater Panel Two-shelf AV Wall-Mounted Furniture; Includes 2 wood and 2 glass back panels	
	PRODUCT DIMENSIONS (w x d x h) 38.4" x 20.8" x 24.5" 97.5 x 52.8 x 62.2 cm	TOP SHELF SIZE/CAPACITY 38.4" x 17" / 75 lbs. 96.5 x 43.1 cm / 34 kg
	MID SHELF SIZE/CAPACITY n/a	BOTTOM SHELF SIZE/CAPACITY 38.4" x 17" / 75 lbs. 96.5 x 43.1 cm / 34 kg

MODEL VF2022-B1 	DESCRIPTION Double-Column Wall-Mounted Furniture	
	PRODUCT DIMENSIONS (w x d x h) 39" x 18" x 21.5" 99 x 45.7 x 54.6 cm	TOP SHELF SIZE/CAPACITY 39" x 18" / 75 lbs. 99 x 45.7 cm / 34 kg
	MID SHELF SIZE/CAPACITY n/a	BOTTOM SHELF SIZE/CAPACITY 39" x 18" / 75 lbs. 99 x 45.7 cm / 34 kg

MODEL VF2012-B1 	DESCRIPTION Single-Column Wall-Mounted Furniture	
	PRODUCT DIMENSIONS (w x d x h) 24" x 18.1" x 21.5" 61 x 46 x 54.6 cm	TOP SHELF SIZE/CAPACITY 24" x 18" / 50 lbs. 61 x 45.7 cm / 22.7 kg
	MID SHELF SIZE/CAPACITY n/a	BOTTOM SHELF SIZE/CAPACITY 24" x 18" / 50 lbs. 61 x 45.7 cm / 22.7 kg

FINISH OPTIONS	 Black (B)	 Mocha
-----------------------	---	--

included with VF5022-B1 and VF5023-B1 only