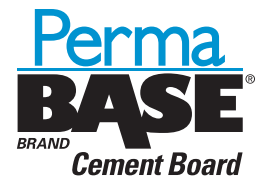


Water-Managed, High-Impact Resistant Wall System



CEMENT BOARD STUCCO WALL SYSTEM

Description

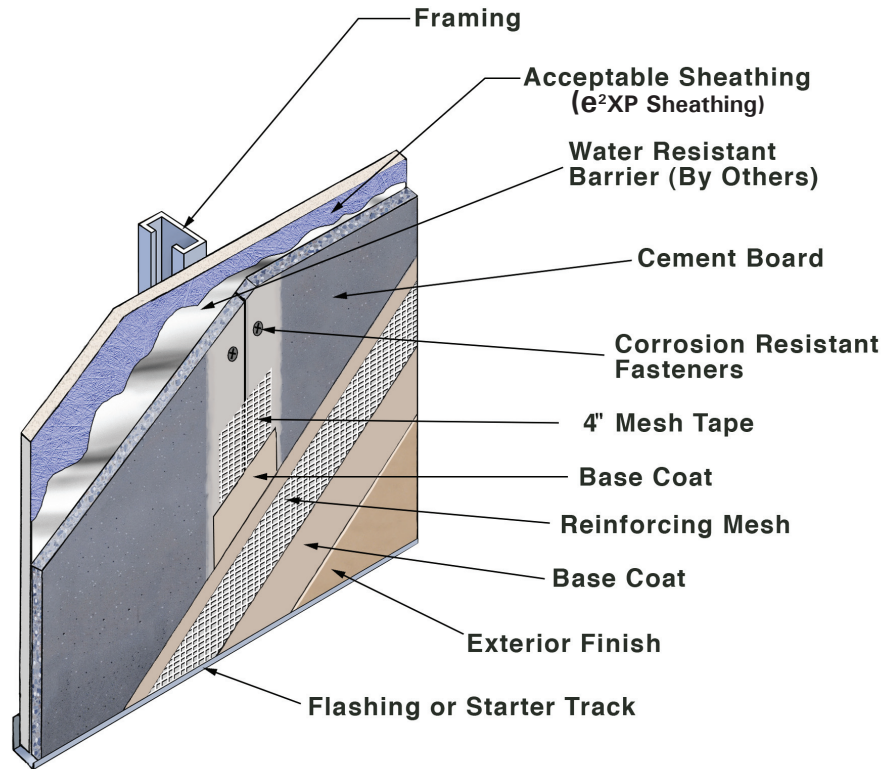
Cement Board Stucco is a water-managed exterior wall system designed to provide increased high-impact and weather resistance and improved dimensional stability where exterior insulation value is not required. For the purposes of meeting structural racking or fire code requirements, it is applied over the following approved sheathings: Exposure 1 or exterior plywood (grade C-D or better); Exposure 1 OSB; or water resistant core gypsum (ASTM C 1396) such as e²XP Sheathing.

It combines the strength and durability of PermaBase Cement board with the performance and beauty of reinforced base coats and textured finishes. All finishes are available in a limitless color selection and offer performance enhancement options ranging from extra mildew resistance to added flexibility.

Behind the system, a weather resistant barrier complying with ASTM D-226 protects approved sheathings and other structural components and serves as a component to evacuate incidental water. Cement Board Stucco allows you to enclose and finish a project in as little as two days, speeding occupancy.

Uses

For high-impact and weather-resistant exterior wall in residential and low-rise commercial applications.



Advantages

Durability/Strength: Moisture resistant, durable PermaBase Cement Board substrates applied over a primary sheathing provide extraordinary impact and puncture resistance to the system.

Weather Resistance: 100% Acrylic base coats and finishes repel weather at the system's surface.

Water-Managed Design: The water-managed design of the system provides drainage to the exterior of incidental water that might enter around or through window or door openings and penetrate behind the cladding in frame construction.

Design Options: Cement Board Stucco provides the popular stucco look, including the attachment of special pre-molded shapes and a wide variety of finish texture and color options in standard colors and custom colors.

Contact exterior coatings manufacturer for color and installation instructions.

Limitations

- Use is limited to residential and low-rise commercial applications
- Thin veneer construction will tend to reveal planar irregularities in the frame construction.
- Minor cracking might become visible in the finished exterior surface.
- For exterior finishes applied direct to PermaBase, reinforcing mesh must be embedded in basecoat. Consult exterior manufacturer for additional installation requirements.
- For conventional Portland Cement plaster systems, self-furring metal lath must be used over PermaBase and adhered to studs.

Please click on the links below for each manufacturer's system using PermaBase[®] BRAND Cement Board:

