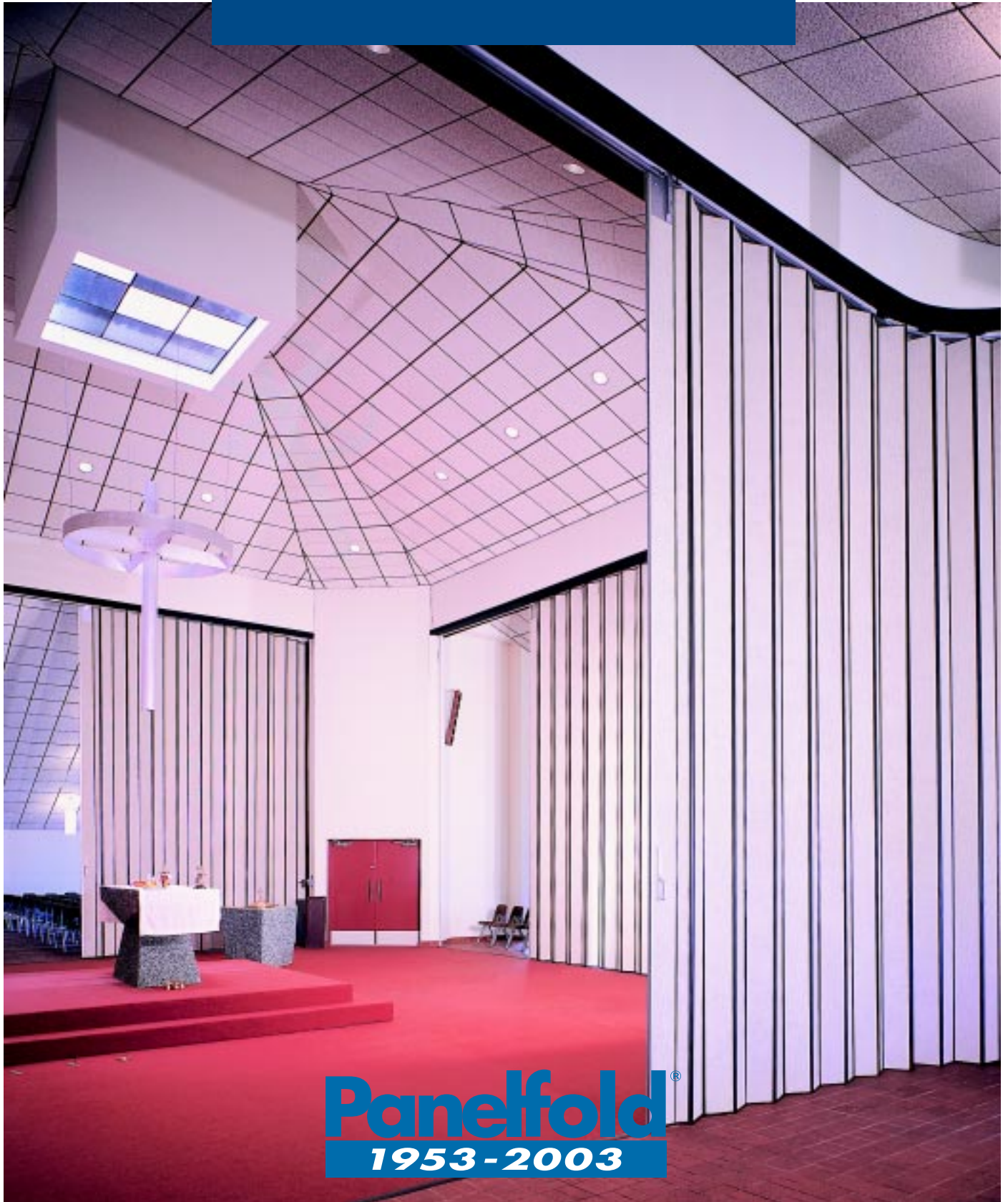


Scale/12[®] • Scale/8[®]

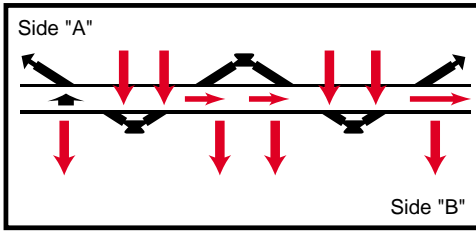
10650/PAN
BuyLine 7239



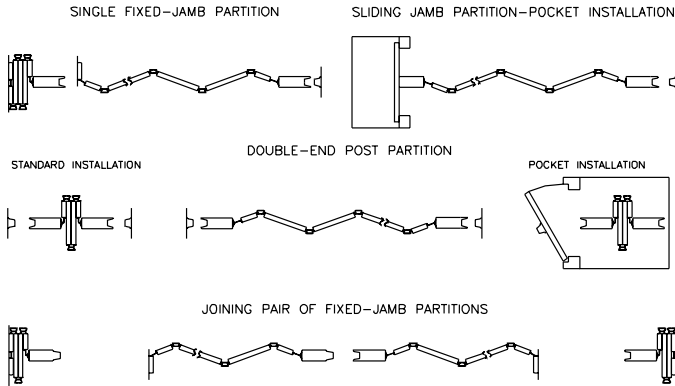
Panelfold[®]
1953-2003

Laminated Single Panel Folding Partitions

unwanted sound from entering the void of the overhead track on one side of the opening (Side "A") and exiting to the opposite side (Side "B")

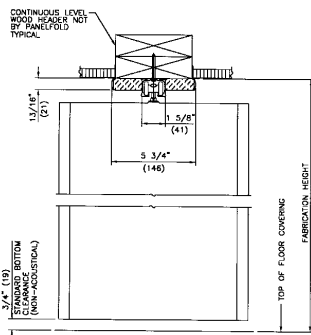


TYPES OF APPLICATIONS

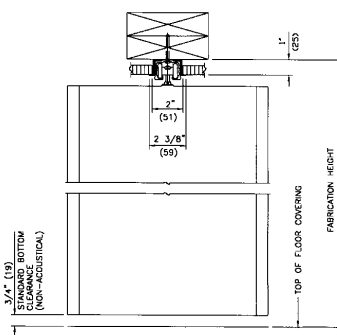


VERTICAL SECTION - HEAD DETAILS FOR SCALE/12 AND SCALE/8 FOLDING PARTITIONS

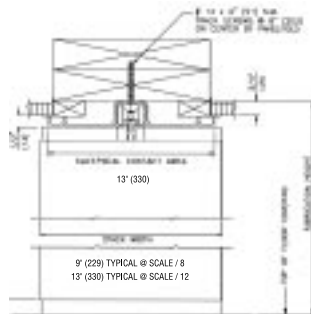
HEAD TYPE 2
SURFACE MOUNTED INSTALLATION
TRACK AND TRACK MOULD
BY PANELFOLD



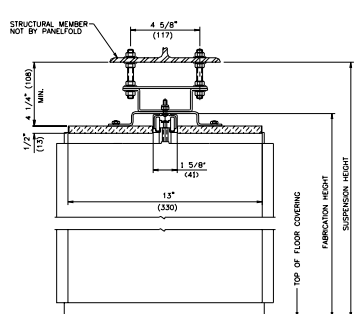
HEAD TYPE 3
RECESSED INSTALLATION
TRACK AND SUBCHANNEL
BY PANELFOLD



HEAD TYPE 9 (ACOUSTICAL)
SURFACE MOUNTED INSTALLATION
TRACK AND INTEGRAL
CEILINGSHIELD BY PANELFOLD



HEAD TYPE 6 (ACOUSTICAL)
HANGER RODS INSTALLATION
TRACK, BRACKETS/HANGER RODS
AND CEILINGUARD BY PANELFOLD



All Dimensions Shown in Parentheses are Millimeters

For complete details and specifications, see Product Briefs, Interactive CD-ROM or Panelfold website at www.panelfold.com

GUIDE SPECIFICATIONS FOR SCALE/12® AND SCALE/8® FOLDING PARTITIONS

PART 2. PRODUCTS

2.1 FOLDING PARTITIONS shall be (specify: acoustical or non-acoustical; manually or electrically operated; Scale/12 (STC 30); or Scale/8 (STC 25) as manufactured by Panelfold, Inc., Miami, Florida USA and installed by an authorized representative of the manufacturer in openings prepared by others to Scale/12•Scale/8 requirements.

2.2 ACOUSTICAL TREATMENT (optional) shall consist of extruded vinyl Sonicsweep seals installed top and bottom; Ceilingshield; extruded vinyl Trakseal track closure; vertical end post seals; and positive latch.

2.3 TRACK AND HANGERS: Track shall be heavy duty extruded aluminum. Two ball-bearing wheels shall be suspended on alternate panels and four on each end post.

2.4 PANEL SURFACES: Panels shall be specially laminated engineered wood core, bonded with water-resistant, plastic glue and surfaced with (specify one: architectural wood veneer; wood grain vinyl; textured vinyl; high pressure decorative laminate; or Ribtex wall carpet or Woventex III Panel fabric); Genuine woods, wood grains and colors from manufacturer's selectors. Optional carved design shall be provided (specify: one or both sides).

2.5 CONNECTOR HINGES: Panels shall be hinged and edge sealed against sound, light and air transmission with heavy-duty, dual-wall, flame-resistant, extruded vinyl. Hinges shall be securely locked into and protect the panel edges. They shall provide "Memory-Action®" causing panels to extend and stack equally, smoothly and quietly. Color from manufacturer's selector.

2.6 TRIM: Non-acoustical partitions shall be supplied with track mould to conceal track or extruded aluminum sub-channel for recess track. For acoustical partitions, see "Acoustical Treatment", paragraph 2.2.

2.7 HARDWARE: Partitions shall have deluxe Gripull handles and automatic latches and jamb mould for jamb closure (specify: bronze ESP or natural anodized). Security units shall be as specified. Optional master-keyed insert type cylinder by others shall be installed in lieu of regularly furnished cylinder.

2.8 FIRE RETARDANCY: (Optional) Where specified, panels shall be made up of fire retardant cores (ASTM E84-70 laboratory tunnel tested with 20 flame spread, 15 fuel contributed, 15 smoke developed).

2.9 CURVED TRACK, SWITCHES AND MULTIPLE MEETING POSTS: Furnish to effect room division as detailed on the plans. Minimum radius 3'0" (914mm).

2.10 STACK FORMULA: (Approximately) Scale/12 11/16"/ft. (914mm/m); Scale/8 1" (82mm/m); plus 5" (127mm) for each end post, manually operated; 9" (229mm) for electrical operation.

2.11 HANGING WEIGHT: Approximately 3 lbs/ft2 (15kg/m2).

