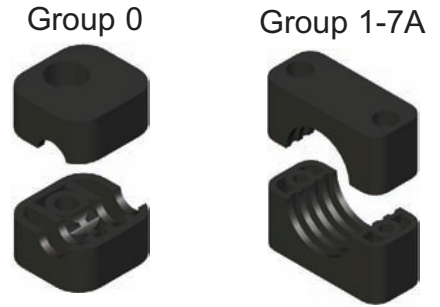


### Clamp Pair Selection

Behringer's clamp pairs are available in different materials and incorporate a modular insert by group size. Standard series pipe clamps are available in sizes from 1/4 in. (6.35mm) through 4-1/4 in. (114.3mm) OD Sizes.



### Clamp Pair Selection and Part Numbers

Behringer Group	Pipe Size	Tube Size	Metric OD (mm)	Imperial OD (Inch)	Clamp Pair P/N (See material code for *)
0	1/8	1/4	6.4	0.250	ST-CLH-00-*-025
		3/8	9.5	0.375	ST-CLH-00-*-038
		1/2	12.7	0.500	ST-CLH-00-*-050
		5/8	16.0	0.620	ST-CLH-00-*-062
		1	19.0	0.750	ST-CLH-00-*-075
1	1/8	1/4	6.4	0.250	ST-CLH-01-*-025
		3/8	9.5	0.375	ST-CLH-01-*-038
		1/2	12.7	0.500	ST-CLH-01-*-050
		5/8	16.0	0.620	ST-CLH-01-*-062
		1	19.0	0.750	ST-CLH-01-*-075
2	1/4	3/8	9.5	0.375	ST-CLH-02-*-038
		1/2	12.7	0.500	ST-CLH-02-*-050
		5/8	16.0	0.620	ST-CLH-02-*-062
		3/4	19.0	0.750	ST-CLH-02-*-075
		7/8	22.2	0.870	ST-CLH-02-*-087
		1	25.4	1.000	ST-CLH-02-*-100
3	1/2	3/4	19.0	0.750	ST-CLH-03-*-075
		7/8	22.2	0.870	ST-CLH-03-*-087
		1	25.4	1.000	ST-CLH-03-*-100
		1 1/8	28.6	1.125	ST-CLH-03-*-112
		1 1/4	32.0	1.250	ST-CLH-03-*-125
4	3/4	1	25.4	1.000	ST-CLH-04-*-100
		1 1/8	28.6	1.125	ST-CLH-04-*-112
		1 1/4	32.0	1.250	ST-CLH-04-*-125
		1 3/8	34.9	1.375	ST-CLH-04-*-137
		1 1/2	38.1	1.500	ST-CLH-04-*-150
5	1	1 1/4	32.0	1.250	ST-CLH-05-*-125
		1 3/8	34.9	1.375	ST-CLH-05-*-137
		1 1/2	38.1	1.500	ST-CLH-05-*-150
		1 5/8	40.0	1.575	ST-CLH-05-*-157
		1 3/4	42.2	1.660	ST-CLH-05-*-166
6	1 1/2	1 3/4	44.5	1.750	ST-CLH-06-*-175
		1 7/8	47.6	1.875	ST-CLH-06-*-187
		2	50.8	2.000	ST-CLH-06-*-200
7	2	2 1/4	57.2	2.250	ST-CLH-07-*-225
		2 1/2	60.3	2.375	ST-CLH-07-*-238
		2 3/4	63.5	2.500	ST-CLH-07-*-250
		3	76.2	3.000	ST-CLH-07-*-300
		3 1/2	88.9	3.500	ST-CLH-07-*-350
7A	4	4	102.0	4.000	ST-CLH-7A-*-400
		4 1/2	114.3	4.500	ST-CLH-7A-*-450

### Clamp Pair Material Codes (\*)

<b>P</b>	<b>[PP] Polypropylene</b> Black Color
<b>S</b>	<b>[SP] Santoprene</b> Beige Color
<b>A</b>	<b>[AL] Aluminum</b> Aluminum Color

### Custom Sizes

Custom sizes can be made by specially boring the clamp pair to any desired size. To order a special size, first find the group that this will fall under. All groups are available starting with 1/4 in. OD and can be used up to the maximum OD size in the chart below. This is expressed in the part number as a two-digit number (G#) Once you have determined your group size, simply add the desired OD of the line to be secured in the 3 digit end number of the clamp pair (XXX) by rounding the number to two decimals and dropping the decimal point. The part number will look like this:  
**ST-CLH-G#-\*-XXX**

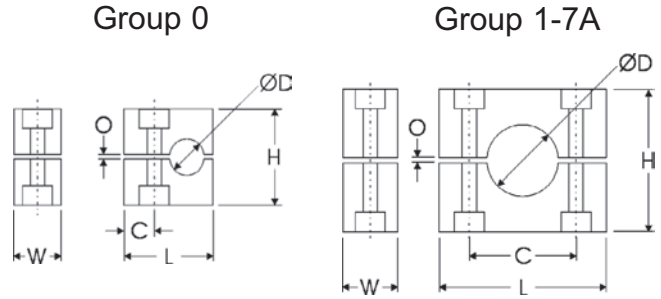
Example: For a line with OD of 1.08 in., this would fall within the group 4. The Part number will be as follows:  
**ST-CLH-04-\*-108**

### Special Bore Range by Group

Group (G#)	Range
00	0.25 in through 0.620 in.
01	0.25 in through 0.405 in.
02	0.25 in through 0.675 in.
03	0.25 in through 1.000 in.
04	0.25 in through 1.125 in.
05	0.25 in through 1.660 in.
06	0.25 in through 2.000 in.
07	0.25 in through 3.240 in.
7A	0.25 in through 4.500 in.

## Clamp Pair Dimensions

Dimensions for the clamp pairs can be found at the right and in the chart below. As a general rule of thumb, the outside diameter of the line to be secured should not vary over or under the ØD dimension in the chart by more than ½ of the tension clearance dimension, or no more than 0.015 in. If an acceptable size is not available, custom sizes can be made to order.



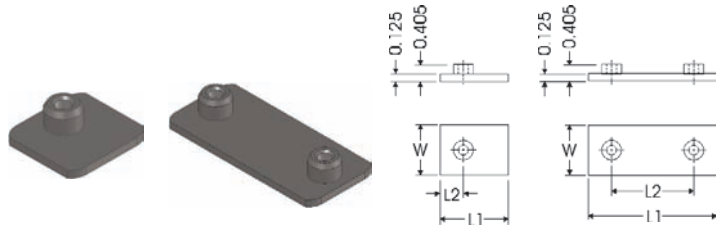
## Clamp Pair Dimensional Information

Behringer Group	Metric ØD (mm)	Imperial ØD (Inch)	Clamp Pair P/N (See page 1 for complete order numbers)	L	W	H	O	C	Weight Ea.
0	6.40	0.250	ST-CLH-00-*-025	1.125 in. (28.6 mm)	1.219 in. (31mm)	1.125 in. (28.6 mm)	0.031 in. (0.8 mm)	0.375 in. (9.5 mm)	0.02 lbs
	9.50	0.375	ST-CLH-00-*-038						
	10.00	0.405	ST-CLH-00-*-041						
	12.70	0.500	ST-CLH-00-*-050						
	16.00	0.620	ST-CLH-00-*-062						
1	6.40	0.250	ST-CLH-01-*-025	1.375 in. (35 mm)	1.219 in. (31mm)	1.375 in. (35 mm)	0.031 in. (0.8 mm)	0.790 in. (20 mm)	0.03 lbs
	8.00	0.315	ST-CLH-01-*-032						
	9.50	0.375	ST-CLH-01-*-038						
	10.00	0.405	ST-CLH-01-*-041						
	12.00	0.472	ST-CLH-01-*-047						
2	9.50	0.375	ST-CLH-02-*-038	1.625 in. (42 mm)	1.219 in. (31mm)	1.375 in. (35 mm)	0.031 in. (0.8 mm)	1.020 in. (26 mm)	0.04 lbs
	12.70	0.500	ST-CLH-02-*-050						
	14.00	0.540	ST-CLH-02-*-054						
	15.00	0.591	ST-CLH-02-*-059						
	16.00	0.620	ST-CLH-02-*-062						
3	18.00	0.709	ST-CLH-03-*-071	1.875 in. (48 mm)	1.219 in. (31mm)	1.375 in. (35 mm)	0.031 in. (0.8 mm)	1.300 in. (33 mm)	0.05 lbs
	19.00	0.750	ST-CLH-03-*-075						
	21.30	0.840	ST-CLH-03-*-084						
	22.20	0.870	ST-CLH-03-*-087						
	25.40	1.000	ST-CLH-03-*-100						
4	26.70	1.050	ST-CLH-04-*-105	2.250 in. (57 mm)	1.219 in. (31mm)	1.625 in. (42 mm)	0.031 in. (0.8 mm)	1.580 in. (40 mm)	0.06 lbs
	28.60	1.125	ST-CLH-04-*-112						
5	28.60	1.125	ST-CLH-05-*-113	2.750 in. (70 mm)	1.219 in. (31mm)	2.375 in. (60 mm)	0.031 in. (0.8 mm)	2.050 in. (52 mm)	0.11 lbs
	32.00	1.250	ST-CLH-05-*-125						
	33.4	1.315	ST-CLH-05-*-132						
	38.1	1.500	ST-CLH-05-*-150						
	42.2	1.660	ST-CLH-05-*-166						
6	44.5	1.750	ST-CLH-06-*-175	3.375 in. (86 mm)	1.219 in. (31mm)	2.625 in. (67 mm)	0.031 in. (0.8 mm)	2.600 in. (66 mm)	0.12 lbs
	48.3	1.900	ST-CLH-06-*-190						
	50.8	2.000	ST-CLH-06-*-200						
7	57.2	2.250	ST-CLH-07-*-225	5.000 in. (127 mm)	1.219 in. (31mm)	4.375 in. (111 mm)	0.031 in. (0.8 mm)	4.250 in. (108 mm)	0.41 lbs
	60.3	2.375	ST-CLH-07-*-238						
	73	2.875	ST-CLH-07-*-288						
	76.2	3.000	ST-CLH-07-*-300						
	88.9	3.500	ST-CLH-07-*-350						
7A	102	4.000	ST-CLH-7A-*-400	5.750 in. (146 mm)	1.219 in. (31mm)	4.828 in. (123 mm)	0.031 in. (0.8 mm)	4.948 in. (126 mm)	0.39 lbs
	114.3	4.500	ST-CLH-7A-*-450						

## Securing Plate Selection and Dimensions

### Weld Plate [STW]

The typical mounting configuration is one where the clamp is welded to the support structure. Weld plates can also be used in the RAL-1 mounting rail as an alternative to using the RCN-1 rail nuts.



Group	Order Number	L1	L2	W	Weight Ea.
0	ST-STW-00-*	1.188 in. (30 mm)	0.420 in. (11 mm)		0.06 lbs.
1	ST-STW-01-*	1.510 in. (38 mm)	0.790 in. (20 mm)		0.07 lbs.
2	ST-STW-02-*	1.740 in. (44 mm)	1.020 in. (26 mm)		0.08 lbs.
3	ST-STW-03-*	2.020 in. (51 mm)	1.300 in. (33 mm)		0.10 lbs.
4	ST-STW-04-*	2.300 in. (58 mm)	1.580 in. (40 mm)	1.223 in. (31 mm)	0.11 lbs.
5	ST-STW-05-*	2.770 in. (70 mm)	2.050 in. (52 mm)		0.13 lbs.
6	ST-STW-06-*	3.320 in. (84 mm)	2.600 in. (66 mm)		0.15 lbs.
7	ST-STW-07-*	4.970 in. (126 mm)	4.250 in. (108 mm)		0.21 lbs.
7A	ST-STW-7A-*	5.776 in. (147 mm)	4.948 in. (126 mm)		0.27 lbs.

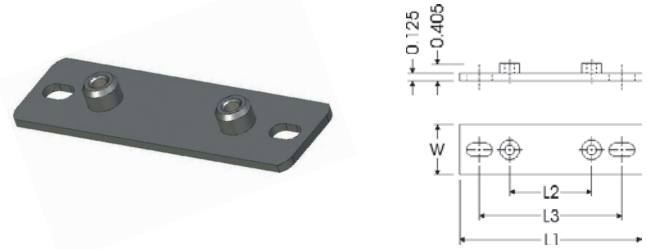
**\*Materials:**

- Z Zinc Plated Steel (Standard Material)
- T AISI 304 Grade Stainless Steel (A2 - 1.4301/1.4305)
- X AISI 316 Grade Stainless Steel (A4 - 1.4401/1.4571)
- C Unplated Carbon Steel (Special Order)

**Threads:** omit As ordered above, the weld plates have standard 1/4 - 20 UNC thread  
 -MET By adding the "-MET" designation after the material designation above, the threads are M6 metric thread

### Base Plate [BAP]

The versatile base plate can be either welded or bolted to the structure. This is typically used where welding is not an option such as on drywall or wood support structures.



Group	Order Number	L1	L2	L3	W	Weight Ea.
0	N/A	-	-	-	-	-
1	ST-BAP-01-*	3.00 in. (76 mm)	0.790 in. (20 mm)	1.75 in. (44 mm)		0.13 lbs.
2	ST-BAP-02-*	3.25 in. (83 mm)	1.020 in. (26 mm)	2.00 in. (51 mm)		0.14 lbs.
3	ST-BAP-03-*	3.50 in. (89 mm)	1.300 in. (33 mm)	2.25 in. (57 mm)		0.16 lbs.
4	ST-BAP-04-*	3.813 in. (97 mm)	1.580 in. (40 mm)	2.563 in. (65 mm)	1.223 in. (31 mm)	0.16 lbs.
5	ST-BAP-05-*	4.25 in. (108 mm)	2.050 in. (52 mm)	3.00 in. (76 mm)		0.19 lbs.
6	ST-BAP-06-*	4.875 in. (124 mm)	2.600 in. (66 mm)	3.625 in. (92 mm)		0.20 lbs.
7	ST-BAP-07-*	6.50 in. (165 mm)	4.250 in. (108 mm)	5.25 in. (133 mm)		0.27 lbs.
7A	ST-BAP-7A-*	7.188 in. (183 mm)	4.948 in. (126 mm)	5.938 in. (171 mm)		0.35 lbs.

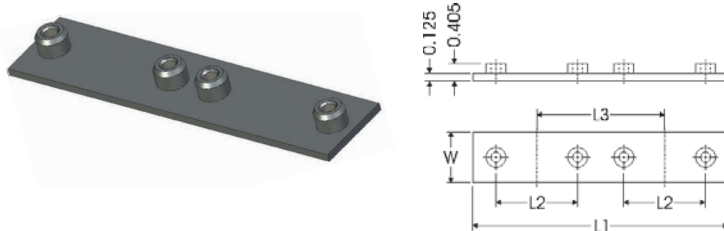
**\*Materials:**

- Z Zinc Plated Steel (Standard Material)
- T AISI 304 Grade Stainless Steel (A2 - 1.4301/1.4305)
- X AISI 316 Grade Stainless Steel (A4 - 1.4401/1.4571)
- C Unplated Carbon Steel (Special Order)

**Threads:** omit As ordered above, the weld plates have standard 1/4 - 20 UNC thread  
 -MET By adding the "-MET" designation after the material designation above, the threads are M6 metric thread

### Double Weld Plate [DOW]

Double weld plates allow for runs of two lines side by side, while keeping center distances aligned and reducing installation time required.



Group	Order Number	L1	L2	L3	W	Weight Ea.
0	N/A	-	-	-	-	-
1	ST-DOW-01-*	3.00 in. (76 mm)	0.790 in. (20 mm)	1.51 in. (38 mm)		0.16 lbs.
2	ST-DOW-02-*	3.50 in. (89 mm)	1.020 in. (26 mm)	1.74 in. (44 mm)		0.17 lbs.
3	ST-DOW-03-*	4.00 in. (102 mm)	1.300 in. (33 mm)	2.02 in. (51 mm)		0.19 lbs.
4	ST-DOW-04-*	4.69 in. (119 mm)	1.580 in. (40 mm)	2.30 in. (58 mm)	1.223 in. (31 mm)	0.24 lbs.
5	ST-DOW-05-*	5.63 in. (143 mm)	2.050 in. (52 mm)	2.77 in. (70 mm)		0.26 lbs.
6	ST-DOW-06-*	6.88 in. (175 mm)	2.600 in. (66 mm)	3.32 in. (84 mm)		0.30 lbs.
7	ST-DOW-07-*	10.22 in. (260 mm)	4.250 in. (108 mm)	5.24 in. (133 mm)		0.45 lbs.
7A	ST-DOW-7A-*	11.69 in. (297 mm)	4.948 in. (126 mm)	6.02 in. (153 mm)		0.56 lbs.

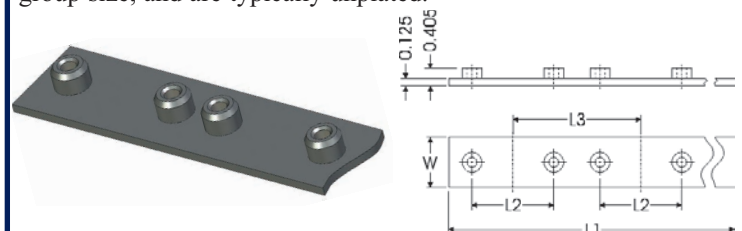
**\*Materials:**

- Z Zinc Plated Steel (Standard Material)
- T AISI 304 Grade Stainless Steel (A2 - 1.4301/1.4305)
- X AISI 316 Grade Stainless Steel (A4 - 1.4401/1.4571)
- C Unplated Carbon Steel (Special Order)

**Threads:** omit As ordered above, the weld plates have standard 1/4 - 20 UNC thread  
 -MET By adding the "-MET" designation after the material designation above, the threads are M6 metric thread

### Group Weld Plate [GRW]

Group weld plates allow for runs of multiple lines side by side, while keeping regimented center distances and reducing installation time required. GRWs can run from 3 to 27 positions, depending on the group size, and are typically unplated.



Group	Order Number	L1	L2	L3	W	Weight Ea.
0	N/A	-	-	-	-	-
1	ST-GRW-01-* <b>-xxx</b>	C/F	0.790 in. (20 mm)	1.51 in. (38 mm)		
2	ST-GRW-02-* <b>-xxx</b>	C/F	1.020 in. (26 mm)	1.74 in. (44 mm)		
3	ST-GRW-03-* <b>-xxx</b>	C/F	1.300 in. (33 mm)	2.02 in. (51 mm)		
4	ST-GRW-04-* <b>-xxx</b>	C/F	1.580 in. (40 mm)	2.30 in. (58 mm)	1.223 in. (31 mm)	
5	ST-GRW-05-* <b>-xxx</b>	C/F	2.050 in. (52 mm)	2.77 in. (70 mm)		
6	ST-GRW-06-* <b>-xxx</b>	C/F	2.600 in. (66 mm)	3.32 in. (84 mm)		
7	ST-GRW-07-* <b>-xxx</b>	C/F	4.250 in. (108 mm)	5.24 in. (133 mm)		
7A	ST-GRW-7A-* <b>-xxx</b>	C/F	4.948 in. (126 mm)	6.02 in. (153 mm)		

**\*Materials:**

- Z Zinc Plated Steel (Special Order)
- T AISI 304 Grade Stainless Steel (A2 - 1.4301/1.4305)
- X AISI 316 Grade Stainless Steel (A4 - 1.4401/1.4571)
- C Unplated Carbon Steel (Standard Material)

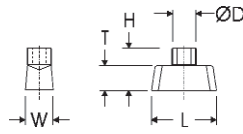
**xxx:** **Number of positions expressed as a 3-digit number**  
 Example #1: ST-GRW-03-C-005 = Group 3, 5 Positions, Carbon Steel  
 Example #2: ST-GRW-04-Z-010 = Group 4, 10 Positions, Zinc-Plated Steel

**Threads:** omit Weld plates have standard 1/4 - 20 UNC thread  
 -MET By adding the "-MET" designation after the material designation above, the threads are M6 metric thread

## Rail and Strut Mounting Component Selection and Dimensions

### Rail Nut [RCN-0 / MRN-0]

The RCN-0 is for use when mounting to Behringer's RAL-0, and competitor's DIN standard rails. The MRN is the same rail nut, but with metric thread.



Group	Order Number	L	W	T	H	Thread
0-7A	ST-RCN-99-* <b>RN0</b>	0.950 in. (24 mm)	0.405 in. (10.2 mm)	0.210 in. (5.3 mm)	0.570 in. (14.5 mm)	1/4 - 20 UNC
0-7A	ST-MRN-99-* <b>RN0</b>	0.950 in. (24 mm)	0.405 in. (10.2 mm)	0.210 in. (5.3 mm)	0.570 in. (14.5 mm)	M6

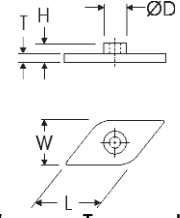
**\*Materials:**

- C** Unplated Carbon Steel (Standard Material)
- T** AISI 304 Grade Stainless Steel (A2 - 1.4301/1.4305)
- X** AISI 316 Grade Stainless Steel (A4 - 1.4401/1.4571)
- Z** Zinc Plated Steel (Special Material)

**Weight Ea.:** Approx. 0.02 lbs each

### Rail Nut [RCN-1 / MRN-1]

The RCN-1 is used only when mounting to Behringer's proprietary RAL-1.



Group	Order Number	L	W	T	H	Thread
0-7A	ST-RCN-99-* <b>RN1</b>	1.075 in. (27.3 mm)	0.783 in. (19.9 mm)	0.175 in. (4.4 mm)	0.405 in. (10 mm)	1/4 - 20 UNC
0-7A	ST-MRN-99-* <b>RN1</b>	1.075 in. (27.3 mm)	0.783 in. (19.9 mm)	0.175 in. (4.4 mm)	0.405 in. (10 mm)	M6

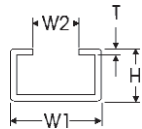
**\*Materials:**

- Z** Zinc Plated Steel (Standard Material)
- T** AISI 304 Grade Stainless Steel (A2 - 1.4301/1.4305)
- X** AISI 316 Grade Stainless Steel (A4 - 1.4401/1.4571)
- C** Unplated Carbon Steel (Special Order)

**Weight Ea.:** Approx. 0.04 lbs

### Mounting Rail [RAL-0]

Behringer's RAL-0 can be used to mount clamps with RCN-0 rail nuts only. This rail is a DIN standard rail. (DIN 3015-1)



Group	Order Number	W1	W2	Length	T	H
0-7A	ST-RA0-99-* <b>xxx</b>	1.125 in. (28 mm)	0.438 in. (11 mm)	See Below	14 gauge	0.438 in. (11 mm)

**\*Materials:**

- C** Unplated Carbon Steel (Standard Material)
- T** AISI 304 Grade Stainless Steel (A2 - 1.4301/1.4305)
- X** AISI 316 Grade Stainless Steel (A4 - 1.4401/1.4571)
- Z** Zinc Plated Steel (Special Order)

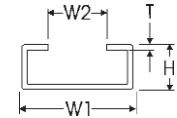
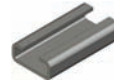
**xxx Length:**

- 6FT** 72 in. (1829 mm) Length (Standard Length) 3.30 lbs Ea
- 3FT** 36 in. (914 mm) Length (Special Length) 1.65 lbs Ea

Custom sizes available on request

### Mounting Rail [RAL-1]

Behringer's Proprietary RAL-1 can be used to mount both clamps with RCN-1 rail nuts or STW weld plates. This allows more flexibility of inventories and simplifies installation and field modifications.



Group	Order Number	W1	W2	Length	T	H
0-7A	ST-RA1-99-* <b>xxx</b>	1.438 in. (28 mm)	0.625 in. (11 mm)	See Below	14 gauge	0.438 in. (11 mm)

**\*Materials:**

- Z** Zinc Plated Steel (Standard Material)
- T** AISI 304 Grade Stainless Steel (A2 - 1.4301/1.4305)
- X** AISI 316 Grade Stainless Steel (A4 - 1.4401/1.4571)
- C** Unplated Carbon Steel (Special Order)

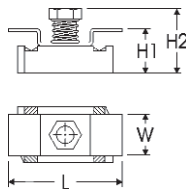
**xxx Length:**

- 6FT** 72 in. (1829 mm) Length (Standard Length) 4.06 lbs Ea
- 3FT** 36 in. (914 mm) Length (Special Length) 2.03 lbs Ea

Custom sizes available on request

### Strut Clip Nut [UCN]

The UCN nut is used to adapt Behringer's pipe clamps to standard strut channel. This allows for even greater flexibility and mounting possibilities.



Group	Order Number	L	W	H1	H2	Thread
0-7A	ST-UCN-99-* <b>N</b>	1.660 in. (42 mm)	0.635 in (16 mm)	0.525 in. (13 mm)	0.813 in. (20.5 mm)	1/4 - 20 UNC

**\*Materials:**

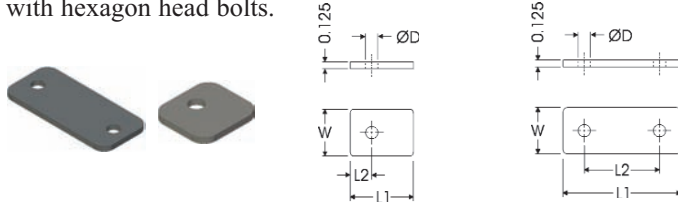
- Z** Zinc Plated Steel (Standard Material)
- T** AISI 304 Grade Stainless Steel (A2 - 1.4301/1.4305)
- X** AISI 316 Grade Stainless Steel (A4 - 1.4401/1.4571)
- C** Unplated Carbon Steel (Special Order)

**Weight Ea.:** Approx. 0.10 lbs.

## Cover and Stacking Component Selection and Dimensions

### Cover Plate [COP]

The Cover plate is the standard top fixture for securing the clamp with hexagon head bolts.



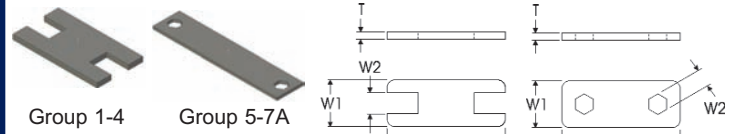
Group	Order Number	L1	L2	W	ØD	Weight Ea.
0	ST-COP-00-*	1.044 in. (27 mm)	0.370 in. (9 mm)			0.04 lbs.
1	ST-COP-01-*	1.362 in. (36 mm)	0.790 in. (20 mm)			0.05 lbs.
2	ST-COP-02-*	1.592 in. (40 mm)	1.020 in. (26 mm)			0.06 lbs.
3	ST-COP-03-*	1.872 in. (48 mm)	1.300 in. (33 mm)			0.07 lbs.
4	ST-COP-04-*	2.152 in. (55 mm)	1.580 in. (40 mm)	1.223 in. (31 mm)	0.275 in. (7 mm)	0.08 lbs.
5	ST-COP-05-*	2.790 in. (71 mm)	2.050 in. (52 mm)			0.10 lbs.
6	ST-COP-06-*	3.340 in. (85 mm)	2.600 in. (66 mm)			0.14 lbs.
7	ST-COP-07-*	5.020 in. (128 mm)	4.250 in. (108 mm)			0.18 lbs.
7A	ST-COP-7A-*	5.782 in. (147 mm)	4.948 in. (126 mm)			0.27 lbs.

**\*Materials:**

- Z Zinc Plated Steel (Standard Material)
- T AISI 304 Grade Stainless Steel (A2 - 1.4301/1.4305)
- X AISI 316 Grade Stainless Steel (A4 - 1.4401/1.4571)
- C Unplated Carbon Steel (Special Order)

### Safety Plate [SAF]

The safety plate is used in conjunction with the STB stacking bolts below. This ensures that the stacking bolts will remain locked in place when tightening the clamp module stacked above.



Group	Order Number	L	W1	W2	T	Weight Ea.
0	N/A	-	-	-	-	-
1	ST-SAF-01-*	1.330 in. (34 mm)	1.125 in. (29 mm)	0.440 in. (11.2 mm)		0.01 lbs.
2	ST-SAF-02-*	1.560 in. (40 mm)	1.125 in. (29 mm)	0.440 in. (11.2 mm)		0.02 lbs.
3	ST-SAF-03-*	1.872 in. (48 mm)	1.125 in. (29 mm)	0.440 in. (11.2 mm)		0.02 lbs.
4	ST-SAF-04-*	2.120 in. (54 mm)	1.125 in. (29 mm)	0.440 in. (11.2 mm)	0.046 in. (1 mm)	0.03 lbs.
5	ST-SAF-05-*	2.760 in. (70 mm)	1.125 in. (29 mm)	0.460 in. (11.7 mm)		0.04 lbs.
6	ST-SAF-06-*	3.340 in. (85 mm)	1.125 in. (29 mm)	0.460 in. (11.7 mm)		0.04 lbs.
7	ST-SAF-07-*	5.020 in. (128 mm)	1.125 in. (29 mm)	0.460 in. (11.7 mm)		0.07 lbs.
7A	ST-SAF-7A-*	5.782 in. (147 mm)	1.125 in. (29 mm)	0.460 in. (11.7 mm)		C/F

**\*Materials:**

- Z Zinc Plated Steel (Standard Material)
- T AISI 304 Grade Stainless Steel (A2 - 1.4301/1.4305)
- X AISI 316 Grade Stainless Steel (A4 - 1.4401/1.4571)
- C Unplated Carbon Steel (Special Order)

### Hexagon Head Bolt [HEX]

The Hexagon head bolt is used when using clamps with cover plates or cover washers.



Group	Order Number	L	UNC Thread	Metric Thread	Weight Ea.
0	ST-HEX-01-*	1.25 in. (32 mm)	1/4 - 20 UNC	M6	0.02 lbs.
1	ST-HEX-01-*	1.25 in. (32 mm)	1/4 - 20 UNC	M6	0.02 lbs.
2	ST-HEX-02-*	1.50 in. (38 mm)	1/4 - 20 UNC	M6	0.02 lbs.
3	ST-HEX-02-*	1.50 in. (38 mm)	1/4 - 20 UNC	M6	0.02 lbs.
4	ST-HEX-04-*	1.75 in. (44 mm)	1/4 - 20 UNC	M6	0.03 lbs.
5	ST-HEX-05-*	2.50 in. (64 mm)	1/4 - 20 UNC	M6	0.04 lbs.
6	ST-HEX-06-*	2.75 in. (70 mm)	1/4 - 20 UNC	M6	0.04 lbs.
7	ST-HEX-07-*	4.50 in. (114 mm)	1/4 - 20 UNC	M6	0.06 lbs.
7A	ST-HEX-7A-*	5.00 in. (127 mm)	1/4 - 20 UNC	M6	0.06 lbs.

**\*Materials:**

- Z Zinc Plated Steel (Standard Material)
- T AISI 304 Grade Stainless Steel (A2 - 1.4301/1.4305)
- X AISI 316 Grade Stainless Steel (A4 - 1.4401/1.4571)
- C Unplated Carbon Steel (Special Order)

**Threads:** omit As ordered above, the weld plates have standard 1/4 - 20 UNC thread  
-MET By adding the "-MET" designation after the material designation above, the threads are M6 metric thread

### Stacking Bolt [STB]

The stacking bolt is used when another clamp module will be stacked on top of the bottom or existing module. The head of the stacking bolt has a female thread for the next bolt to engage with.



Group	Order Number	L1	L2	L3	Weight Ea.
0	ST-STB-01-*	1.438 in. (36.5 mm)	0.813 in. (21 mm)	0.75 in. (19 mm)	0.03 lbs.
1	ST-STB-01-*	1.438 in. (36.5 mm)	0.813 in. (21 mm)	0.75 in. (19 mm)	0.03 lbs.
2	ST-STB-02-*	1.688 in. (43 mm)	1.063 in. (27 mm)	0.75 in. (19 mm)	0.04 lbs.
3	ST-STB-02-*	1.688 in. (43 mm)	1.063 in. (27 mm)	0.75 in. (19 mm)	0.04 lbs.
4	ST-STB-04-*	1.938 in. (49 mm)	1.313 in. (33 mm)	0.75 in. (19 mm)	0.04 lbs.
5	ST-STB-05-*	2.688 in. (68 mm)	2.063 in. (52 mm)	0.75 in. (19 mm)	0.05 lbs.
6	ST-STB-06-*	2.938 in. (75 mm)	2.313 in. (59 mm)	0.75 in. (19 mm)	0.05 lbs.
7	ST-STB-07-*	4.688 in. (119 mm)	4.063 in. (103 mm)	0.75 in. (19 mm)	0.08 lbs.
7A	C/F	-	-	-	-

**\*Materials:**

- Z Zinc Plated Steel (Standard Material)
- T AISI 304 Grade Stainless Steel (A2 - 1.4301/1.4305)
- X AISI 316 Grade Stainless Steel (A4 - 1.4401/1.4571)
- C Unplated Carbon Steel (Special Order)

**Threads:** omit As ordered above, the weld plates have standard 1/4 - 20 UNC thread  
-MET By adding the "-MET" designation after the material designation above, the threads are M6 metric thread

### Cover Washer [COW]

Cover washers can be used as an alternative to cover plates in some applications where there is little vibration, and low operating pressures.



Group	Order Number	ØD1	ØD2	T	Weight Ea.
0-7A	ST-COW-99-*	0.630 in. (16 mm)	0.265 in. (6.7 mm)	0.117 in. (3 mm)	0.01 lbs.

**\*Materials:**

- Z Zinc Plated Steel (Standard Material)
- T AISI 304 Grade Stainless Steel (A2 - 1.4301/1.4305)
- X AISI 316 Grade Stainless Steel (A4 - 1.4401/1.4571)
- C Unplated Carbon Steel (Special Material)

Chart 1 Chart 2 Chart 3 Chart 4 Chart 5  
S T 5150 - PP - MET

① Clamp Configuration	
<b>S</b>	Complete Clamp for Weld Mounting [STW]
<b>BS</b>	Complete Clamp for Bolt Mounting [BAP]
<b>DS</b>	Complete Double Clamp for Weld Mounting [DOW]
<b>R0S</b>	Complete Clamp for mounting to RAL-0 [RCN-0]
<b>R1S</b>	Complete Clamp for mounting to RAL-1 [RCN-1]
<b>US</b>	Complete Clamp for mounting to Strut Channel [UCN]
<b>G*S</b>	Complete Clamp for Group Weld Plate Mounting [GRW] * is the number of positions
<b>SSK</b>	Stacking Kit [SAF + STB]

② Hardware Materials	
<b>Omit</b>	Electro-Zinc Dichromate Plating RCN-0 rail nuts and group weld plates (GRW) are still supplied as untreated carbon steel. Zinc plating available for these parts on request.
<b>T</b>	AISI 304 Stainless Steel (A2 - 1.4301/1.4305)
<b>X</b>	AISI 316/316Ti Stainless Steel (A4 - 1.4401/1.4571)
<b>C</b>	Untreated Carbon Steel

④ Clamp Pair Material	
<b>PP</b>	Polypropylene
<b>SP</b>	Santoprene
<b>AL</b>	Aluminum Groups 1-6 only


⑤ Threads	
<b>Omit</b>	UNC Thread (Standard)
<b>MET</b>	Metric Thread (Special)

③ Clamp Group and Size					
Behringer Group	Pipe Size	Tube Size	Metric OD (mm)	Imperial OD (Inch)	Clamp Halves (Set of 2)
0		1/4	6.40	0.250	0025
		3/8	9.50	0.375	0038
	1/8		10.00	0.405	00405
1		1/4	6.40	0.250	1025
		3/8	9.50	0.380	1038
	1/8		10.00	0.405	10405
			12.00	0.472	10472
2		1/2	12.70	0.500	2050
	1/4		14.00	0.540	20540
			15.00	0.591	2059
		5/8	16.00	0.620	2062
	3/8		17.10	0.675	20675
3			18.00	0.709	3071
		3/4	19.00	0.750	3075
	1/2		21.30	0.840	30840
		7/8	22.20	0.870	3087
4		1	25.40	1.000	3100
	3/4		26.70	1.050	41050
		1 1/8	28.60	1.125	41125
5		1 1/4	32.00	1.250	5125
	1		33.4	1.315	51315
		1 1/2	38.1	1.500	5150
6	1 1/4		42.2	1.660	51660
		1 3/4	44.5	1.750	6175
	1 1/2		48.3	1.900	61900
7		2	50.8	2.000	6200
		2 1/4	57.2	2.250	7225
	2		60.3	2.375	72375
	2 1/2		73	2.875	72875
		3	76.2	3.000	7300
7A	3	3 1/2	88.9	3.500	7350
		4	102	4.000	7A400
	4	4 1/2	114.3	4.500	7A450

### Ordering Examples

**S**

Single Clamp for Weld Mounting



Consists of:  
 2 HEX bolts  
 1 COP Cover Plate  
 1 CLH Clamp Set (2 halves)  
 1 STW Weld Plate

**DS**


Double Clamp for Weld Mounting



Consists of:  
 4 HEX bolts  
 2 COP Cover Plate  
 2 CLH Clamp Sets (4 halves)  
 1 DOW Weld Plate

**BS**

Clamp for Bolt Mounting



Consists of:  
 2 HEX bolts  
 1 COP Cover Plate  
 1 CLH Clamp Set (2 halves)  
 1 BAP Weld Plate

**SSK**

Stacking Kit



Consists of:  
 2 STB Stacking Bolts  
 1 SAF Safety Plates  
 1 CLH Clamp Sets (2 halves)

**R0S**


Clamp for Rail-0 Mounting



Consists of:  
 2 HEX bolts  
 1 COP Cover Plate  
 1 CLH Clamp Set (2 halves)  
 2 RCN-0 Rail Nuts  
 Standard material for the RCN-0 rail nuts is un-plated steel.

**R1S**

Clamp for Rail-1 Mounting



Consists of:  
 2 HEX bolts  
 1 COP Cover Plate  
 1 CLH Clamp Set (2 halves)  
 2 RCN-1 Rail Nuts

## Ordering Examples

US



Clamp for Strut Mounting

- Consists of:
- 2 HEX bolts
  - 1 COP Cover Plate
  - 1 CLH Clamp Set (2 halves)
  - 2 UCN Strut Clips

G\*S



Clamp for Group Weld Mounting

- Consists of:
- 2 HEX bolts x Number of Positions
  - 1 COP Cover Plate x Number of Positions
  - 1 CLH Clamp Set (2 halves) x Number of Positions
  - 1 GRW Group Weld Plate (continuous length)
- Standard Material for the GRW is un-plated steel.

\*is the number of positions

Example: Group 2, 5 positions of 1/2" Tube, PP Clamps, 304SS = G5ST2050-PP