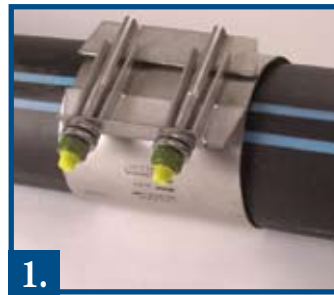




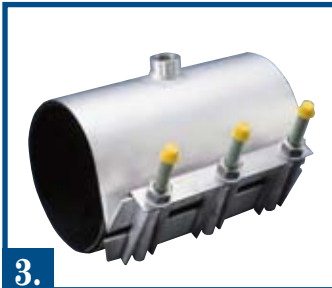
2B



2A.

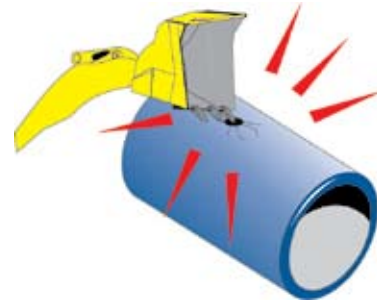


1.

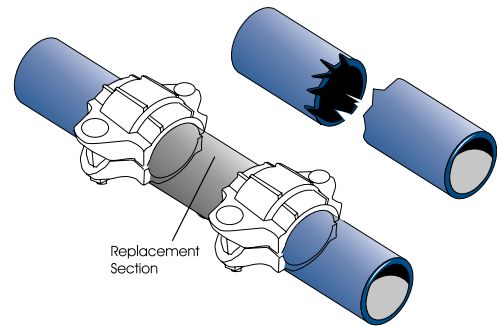


3.

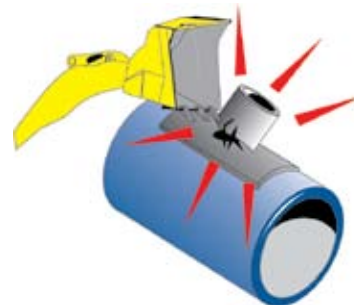
1. Small holes from backhoe bucket can be repaired using a repair clamp as shown in picture 1. Coupling must have good coverages over the damaged area. Typically couplings are in length equal to one to one and half diameters of the pipe. Holes larger than 2" to 3" are treated like a separate pipe for pressure systems. In gravity systems, holes can be no larger than 1/3 the pipe diameter. The coupling must extend at least 1/2 the pipe diameter beyond the hole on each side.



2. If the IPS HDPE pipe is damaged and is in two parts, then extra pipe must be added and two couplings as shown in picture 2A (IPS) or 2B (DIPS) must be used.



3. When a saddle on HDPE pipe is damaged or is leaking, then a repair saddle is used as is shown in picture 3.



Mechanical Connectors

1-800-345-ISCO

www.isco-pipe.com