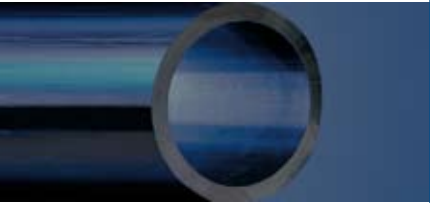
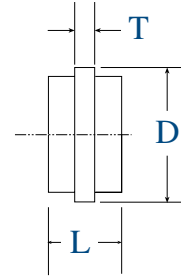


IPS Fittings Wall Anchor (Force Transfer / Restraint Fitting)



IPS
HDPE
Fittings

Pressure Rating of Wall Anchors are equal to pipe of same DR.

Wall Anchors from 3608 resin:	
DR	Pressure Rating
7	267 psi
9	200 psi
11	128 psi
13.5	128 psi
15.5	110 psi
17	100 psi
21	80 psi
26	64 psi
32.5	51 psi

Wall Anchors from 4710 resin:	
DR	Pressure Rating
7	336 psi
9	252 psi
11	202 psi
13.5	161 psi
15.5	139 psi
17	126 psi
21	101 psi
26	81 psi
32.5	64 psi

Note: Size/DR listings shown are commonly requested. Many DR options not listed are available. Please consult an ISCO representative for availability.

IPS Fittings Wall Anchor								
Nominal Size (in)	Pipe OD (in)	DR	Part #	D (in)	Dimensions T (in)	L (in)	Weight (lbs)	Shipping Method
3/4	1.05	11	ISFFWA07511IPS	1.85	1	12	0.5	FedEx
1	1.315	11	ISFFWA0111IPS	2.4	1	12	0.7	FedEx
1 1/4	1.66	11	ISFFWA012511IPS	2.75	1	12	1	FedEx
1 1/2	1.9	11	ISFFWA01511IPS	3.125	1	12	1	FedEx
2	2.375	09	ISFFWA0209IPS	3.9	1	12	2	FedEx
		11	ISFFWA0211IPS	"	"	"	1	"
3	3.5	09	ISFFWA0309IPS	5	1	12	4	FedEx
		11	ISFFWA0311IPS	"	"	"	3	"
		17	ISFFWA0317IPS	"	"	"	2	"
4	4.5	09	ISFFWA0409IPS	6.6	1	12	5	FedEx
		11	ISFFWA0411IPS	"	"	"	5	"
		17	ISFFWA0417IPS	"	"	"	3	"
6	6.625	09	ISFFWA0609IPS	8.5	1.1	16	14	FedEx
		11	ISFFWA0611IPS	"	"	"	20	"
		17	ISFFWA0617IPS	"	"	"	18	"
		26	ISFFWA0626IPS	"	"	"	5	"
8	8.625	09	ISFFWA0809IPS	10.6	1.25	16	23	FedEx
		11	ISFFWA0811IPS	"	"	"	20	"
		17	ISFFWA0817IPS	"	"	"	18	"
		26	ISFFWA0826IPS	"	"	"	9	"
10	10.75	09	ISFFWA1009IPS	12.75	1.5	18	39	FedEx
		11	ISFFWA1011IPS	"	"	"	33	"
		17	ISFFWA1017IPS	"	"	"	22	"
		26	ISFFWA1026IPS	"	"	"	15	"
12	12.75	09	ISFFWA1209IPS	15.5	1.5	18	55	FedEx
		11	ISFFWA1211IPS	"	"	"	46	"
		17	ISFFWA1217IPS	"	"	"	31	"
		26	ISFFWA1226IPS	"	"	"	21	"
14	14	7	ISFFWA1407IPS	17.5	2.4	24	95	FedEx
		11	ISFFWA1411IPS	"	1.5	"	67	"
		17	ISFFWA1417IPS	"	"	"	45	"
		32.5	ISFFWA1432IPS	"	"	"	24	"
16	16	7	ISFFWA1607IPS	20	2.8	24	124	FedEx
		11	ISFFWA1611IPS	"	1.5	"	87	"
		17	ISFFWA1617IPS	"	"	"	58	"
		32.5	ISFFWA1632IPS	"	"	"	32	"
18	18	7	ISFFWA1807IPS	21.1	3.1	24	157	LTL
		11	ISFFWA1811IPS	"	2	"	110	"
		17	ISFFWA1817IPS	"	"	"	74	"
		32.5	ISFFWA1832IPS	"	"	"	40	"

1-800-345-ISCO

www.isco-pipe.com



IPS Fittings Wall Anchor (continued)

IPS Fittings Wall Anchor								
Nominal Pipe Size(in)	OD(in)	DR	Part #	Dimensions			Weight (lbs)	Shipping Method
				D (in)	T (in)	L (in)		
20	20	7	ISFFWA2007IPS	23.5	3.5	24	196	LTL
		11	ISFFWA2011IPS	"	2	"	136	"
		17	ISFFWA2017IPS	"	"	"	91	"
		32.5	ISFFWA2032IPS	"	"	"	49	"
22	22	7	ISFFWA2207IPS	25.6	3.8	24	234	LTL
		11	ISFFWA2211IPS	"	2.3	"	164	"
		17	ISFFWA2217IPS	"	1.7	"	110	"
		32.5	ISFFWA2232IPS	"	1	"	60	"
24	24	7	ISFFWA2407IPS	27.9	4.1	24	279	LTL
		11	ISFFWA2411IPS	"	2.5	"	196	"
		17	ISFFWA2417IPS	"	1.8	"	131	"
		32.5	ISFFWA2432IPS	"	1.1	"	71	"
26	26	11	ISFFWA2611IPS	30	2.7	30	320	LTL
		17	ISFFWA2617IPS	"	1.9	"	268	"
		26	ISFFWA2626IPS	"	1.4	"	120	"
		32.5	ISFFWA2632IPS	"	1.1	"	97	"
28	28	11	ISFFWA2811IPS	32.3	2.9	30	371	LTL
		17	ISFFWA2817IPS	"	2.1	"	311	"
		26	ISFFWA2826IPS	"	1.5	"	140	"
		32.5	ISFFWA2832IPS	"	1.2	"	113	"
30	30	11	ISFFWA3011IPS	34.25	3.1	30	426	LTL
		17	ISFFWA3017IPS	"	2.2	"	357	"
		26	ISFFWA3026IPS	"	1.6	"	240	"
		32.5	ISFFWA3032IPS	"	1.3	"	129	"
32	32	11	ISFFWA3211IPS	36.5	3.3	30	406	LTL
		17	ISFFWA3217IPS	"	2.4	"	273	"
		26	ISFFWA3226IPS	"	1.7	"	182	"
		32.5	ISFFWA3232IPS	"	1.4	"	147	"
36	36	11	ISFFWA3611IPS	40.8	3.7	30	514	LTL
		17	ISFFWA3617IPS	"	2.7	"	345	"
		26	ISFFWA3626IPS	"	1.9	"	231	"
		32.5	ISFFWA3632IPS	"	1.6	"	186	"
40	39.37	17	ISFFWA4017IPS	45.25	2.9	42	530	LTL
		21	ISFFWA4021IPS	"	2.5	"	435	"
		26	ISFFWA4026IPS	"	2.1	"	355	"
		32.5	ISFFWA4032IPS	"	1.7	"	287	"
42	42	17	ISFFWA4217IPS	47.5	3.1	42	604	LTL
		21	ISFFWA4221IPS	"	2.6	"	495	"
		26	ISFFWA4226IPS	"	2.2	"	404	"
		32.5	ISFFWA4232IPS	"	1.8	"	326	"
48	48	17	ISFFWA4817IPS	54	3.6	42	789	LTL
		21	ISFFWA4821IPS	"	3	"	646	"
		26	ISFFWA4826IPS	"	2.5	"	527	"
		32.5	ISFFWA4832IPS	"	2.1	"	426	"
54	54	21	ISFFWA5421IPS	60.0	3.4	42	818	LTL
		26	ISFFWA5426IPS	"	2.8	"	667	"
		32.5	ISFFWA5432IPS	"	2.3	"	539	"



IPS
HDPE
Fittings

Pressure Rating of wall anchors are equal to pipe of same DR.

Wall Anchors from 3608 resin:	
DR	Pressure Rating
7	267 psi
9	200 psi
11	128 psi
13.5	128 psi
15.5	110 psi
17	100 psi
21	80 psi
26	64 psi
32.5	51 psi

Wall Anchors from 4710 resin:	
DR	Pressure Rating
7	336 psi
9	252 psi
11	202 psi
13.5	161 psi
15.5	139 psi
17	126 psi
21	101 psi
26	81 psi
32.5	64 psi

Note: Size/DR listings shown are commonly requested. Many DR options not listed are available. Please consult an ISCO representative for availability.

1-800-345-ISCO

www.isco-pipe.com