

# M Series E

## Audio Matrix Mixer

# Technical Specifications

### Feature Focus

- Up to 128 x 128 Sources & Outputs
- True Crosspoint Matrix Mixing
- RS232, TCP/IP LAN, Ethernet Control
- Real-time Event Scheduling Software
- 128 User Presets
- Flash Upgradeable
- Mic or Line Level Inputs
- Front and Rear Panel RS232 Connections
- Audio Selection and Volume Control
- Design and Installation PC Software

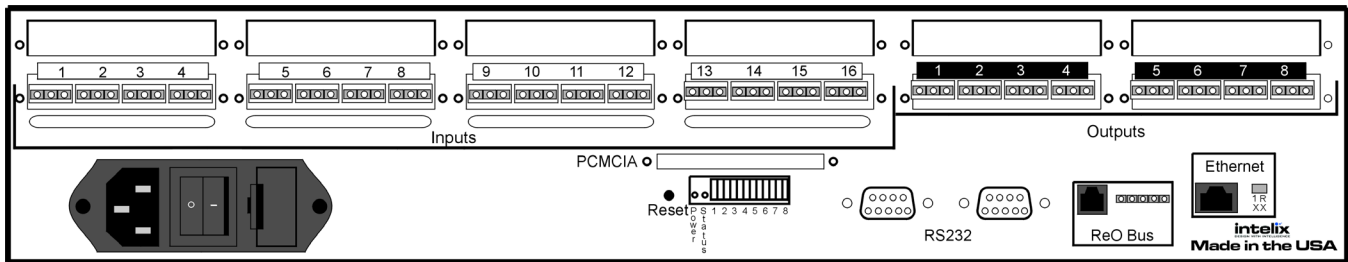
The Intelix M Series E is the audio distribution hub at the heart of your sophisticated A/V environment.



The M Series E combines the popular features of the Intelix M Series line of audio matrix mixers with unique scheduling software and an advanced CPU card - providing multiple connectivity options for easy remote control in situations where control is often problematic, such as through firewall connections.

Diagnostics are hassle-free with the M Series E's dual com port CPU. Front and rear panel connectors eliminate the need to access the rear of the rack and Flash ROM upgrades ensure the matrix remains state-of-the-art without costly labor swapping CPU chips.

For more information, please visit [www.intelix.com](http://www.intelix.com) or contact Intelix directly at 1-866-4-MATMIX.



M Series E Rear Panel

\*Actual unit may contain external power supply

## Specifications

### GENERAL

<b>Frequency Response</b>	±.5 dB from 20 Hz to 20 kHz +0, -3 dB from 10 Hz to 30 kHz
<b>VCA Control Range</b>	100 dB (attenuation only)
<b>Signal to Noise</b>	Ref +26 dBu = 100 dB
<b>Crosstalk</b>	better than -80 dB

### INPUTS

<b>Input Impedance</b>	(electronically balanced) 20kOhms (unbalanced) 10kOhms
<b>Nominal Source Impedance</b>	150 Ohms
<b>Nominal Input Level</b>	+4 dBu RMS
<b>Max Input Level</b>	+26 dBu RMS

### Mic/Line 8 Input Card (optional)

<b>Frequency Response</b>	±.5 dB from 20 Hz to 20 kHz +0, -3 dB from 10 Hz to 30 kHz
<b>Maximum Voltage Gain</b>	60 dB
<b>Signal to Noise</b>	Ref +26 dBu @ 54 dB sys gain ±90 dB
<b>Equivalent Input Noise</b>	-129 dB @ 50 Ohms 20 Hz to 20 kHz
<b>Crosstalk</b>	better than -90 dB
<b>Phantom Power</b>	+15 VDC
<b>Input Impedance</b>	3.5 kOhms
<b>Input Gain/Trim Range</b>	60 dB

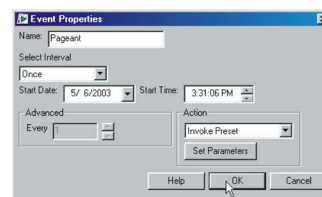
### OUTPUTS

<b>Output Impedance</b>	(electronically balanced) 440 Ohms (unbalanced) 220 Ohms
<b>Nominal Load Impedance</b>	600 Ohms
<b>Nominal Level</b>	+4 dBu RMS
<b>Maximum Level</b>	(balanced) +26 dBu RMS (unbalanced) +20 dBu RMS

**Power Requirements** 18 VAC Center-Tapped, 4.5 A,  
(stock models) 85 VA, ±19 VDC, 4.5 A

**Dimensions** 19" x 14" x 3.5"  
(stock 2RU models) (48.2 cm x 8.9 cm x 35.6 cm)

**Shipping Weight (average)** 24 lb (10.9 kg)



Ideal for malls and retail facilities, Intelix Real-time event scheduling software allows facility managers to easily program repetitive or unique audio activities in a familiar, simple platform closely resembling standard PDA scheduling software.

form closely resembling standard PDA scheduling software.

[www.intelix.com](http://www.intelix.com)

**intelix**  
DESIGN WITH INTELLIGENCE

2222 Pleasant View Road  
Suite #1  
Middleton, WI 53562

Phone: 608-831-0880  
Toll-Free: 1-866-4-MATMIX  
Fax: 608-831-1833