

- RGB, DVI, HD, S-Video, NTSC / PAL inputs**
- Inputs to 1920 x 1200 pixels**
Output to 1920 x 1200 pixels
- Smoothly size and position inputs**
- Zoom areas of interest**
- Ethernet and RS-232 control**
- Web operation**
- 24 presets**
- 4:3 and 16:9 displays**
- Colored backgrounds**
- Titles and borders**
- RGB/DVI output**

TWO & FOUR WINDOW MULTIVIEWERS

**TWO COMPUTER or
FOUR VIDEO or
ANY COMBINATION**

QuadView 2+2
Four Window Display Processor

DualView2
Two Window Display Processor

4 View
Four Video Display Processor

The QuadView® 2+2, DualView™ 2 and 4 View™ display processors provide viewing of multiple video and computer signals on a single screen. Each provides some of the functionality of RGB Spectrum's more advanced multiviewers at an attractive price.

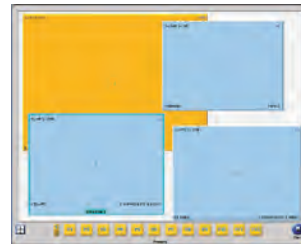
The QuadView 2+2 processor displays up to four signals from ten switched inputs. The user can choose up to any four signals for display from two RGB/DVI/HD and four composite/S-Video inputs, unlike lesser systems restricted to two of each type. In addition, inputs can be displayed at any size and position, either under "click and drag" cursor control or from presets.

The DualView 2 displays two signals from six switched inputs. The user can choose up to two inputs from the available RGB/DVI/HD or composite/S-Video inputs. The 4 View processor displays four composite or S-video signals. Unlike other video multiviewers, the 4 View processor offers 4x video resolution to preserve the quality of each signal.

Each input can be smoothly panned and zoomed to emphasize areas of particular interest, as well as scaled and positioned anywhere on the screen. Display alternatives are virtually infinite, and include quad split, side-by-side, picture-in-picture, and overlapping windows.

All functions are easily set up and controlled remotely with a command line interface from either the RS-232 or Ethernet ports, or graphically via a web browser using RGB Spectrum's WCP™ control system.

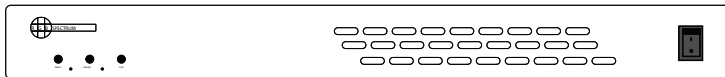
Outstanding image quality plus features like web-based control, dynamic window sizing, borders and titling, and smooth pan and zoom, make these processors ideal for any application requiring the display of multiple images on a single screen.



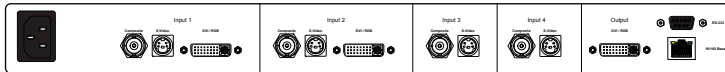
Operate all of the processor's display capabilities remotely from a web browser using the Web Control Panel (WCP). Size and position windows with "click and drag" simplicity.

Specifications

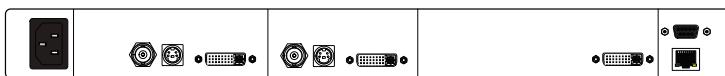
	QuadView 2x2	DualView 2	4 View
Input Signals			
Number/type	2x RGB/YPbPr/HD/DVI on DVI-I connectors 4x composite video (NTSC/PAL) 4x S-Video	2x RGB/YPbPr/HD/DVI on DVI-I connectors 2x composite video (NTSC/PAL) 2x S-Video	2x composite video (NTSC/PAL) 4x S-Video
Resolution	RGB: 640x480 to 1920x1200 DVI: 640x480 to 1600x1200 720p, 1080i and 1080p HD	RGB: 640x480 to 1920x1200 DVI: 640x480 to 1600x1200 720p, 1080i and 1080p HD	720x480 (NTSC) 720x576 (PAL)
Horizontal scan rate	1 2 to 125 kHz interlaced or non-interlaced	1 2 to 125 kHz interlaced or non-interlaced	15.625 to 15.75 kHz interlaced
Frame rate	Up to 200 Hz	Up to 200 Hz	25 to 30 Hz
Video levels	0.7 V p-p	0.7 V p-p	0.7 V p-p
Sync type	Sync on green, separate composite sync, or separate H-drive and V-drive	Sync on green, separate composite sync, or separate H-drive and V-drive	Composite sync
Output Signals			
Type	RGB, DVI on DVI-I connector	RGB, DVI on DVI-I connector	RGB, DVI on DVI-I connector
Resolution	640x480 to 1920x1200 pixels	640x480 to 1920x1200 pixels	640x480 to 1920x1200 pixels
Horizontal scan rate	12 kHz to 125 kHz interlaced or non-interlaced	12 kHz to 125 kHz interlaced or non-interlaced	12 kHz to 125 kHz interlaced or non-interlaced
Video levels	0.7 V p-p	0.7 V p-p	0.7 V p-p
Sync type	Sync on green, separate composite sync, or separate H-drive and V-drive	Sync on green, separate composite sync, or separate H-drive and V-drive	Sync on green, separate composite sync, or separate H-drive and V-drive
Other			
Power	100-240 VAC auto ranging 47 Hz - 63 Hz Less than 40 W	100-240 VAC auto ranging 47 Hz - 63 Hz Less than 40 W	100-240 VAC auto ranging 47 Hz - 63 Hz Less than 40 W
Control	Ethernet 10/100 BASE-T RS-232 Web interface	Ethernet 10/100 BASE-T RS-232 Web interface	Ethernet 10/100 BASE-T RS-232 Web interface
Size	1 RU Width 17.25"/43.8 cm Depth 11.7"/29.7 cm Height 1.75"/4.5 cm	1 RU Width 17.25"/43.8 cm Depth 11.7"/29.7 cm Height 1.75"/4.5 cm	1 RU Width 17.25"/43.8 cm Depth 11.7"/29.7 cm Height 1.75"/4.5 cm
Rackmount	Rackmount kit included	Rackmount kit included	Rackmount kit included
Weight	Approximately 12 lbs/5.45 kg	Approximately 12 lbs/5.45 kg	Approximately 12 lbs/5.45 kg



Front panel



Rear panel - QuadView 2+2



Rear panel - DualView 2



Rear panel - 4 View