

# Revolabs Classroom Wireless Amplification System

01-CLASSRM-BLK Black Speakers Americas  
01-CLASSRM-WHT White Speakers Americas

## Powered Speakers



### Size

9.67" (24.5 cm) x 7.2" (18.2 cm) x  
6.54" (16.6 cm)

### Weight

13.2 lbs per pair

### AC Power Input

120 VAC

### Equalization

50 Hz shelf +/- 15dB

10 kHz shelf +/- 12 dB

### Woofer Diameter/Impedance

5.25" (13.5 cm)/8 ohm

### Tweeter Diameter/Impedance

0.5" (1.27 cm)/8 ohm

### Power

30 Watts

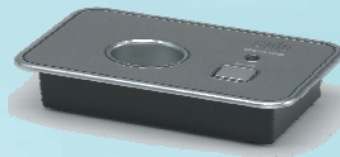
### Sensitivity

89 dB

### Frequency Response

60 Hz to 20 kHz

## Charger Base



### Size

3.9" x 2.4" x 1.0" (10 cm x 6 cm x 2.56  
cm)

### Power Adapter

110V AC, 60Hz to 5V DC, 300mA

## Wireless Microphone



### Size

0.9" (2.3 cm) x 0.8" (2.03 cm) x 2.6" (6.6 cm)

### Weight

0.05 lb (0.02 kg)

### Radio Frequency

1.92-1.93 GHz (DECT in UPCS)

### Acoustic Pickup Pattern

Cardioid

### Range

65' (20 m) approximately, various settings

Out-of-range alarm

### Battery

Lithium Polymer

Up to 8 hours talk time

### Audio Bandwidth

100-6800 Hz

### Encryption

128-bit

### Includes:

24 " (60.96 cm) Lanyard

## Transmitter/Receiver



### Size

3.9" x 2.4" x 1.0" (10 cm x 6 cm x  
2.56 cm)

### Connectors

Power-5V DC, proprietary 0.7 mm

Mini USB-5 pin connector

Audio unbalanced In/Out 2.5mm

Tip: Audio Out

Ring: Audio In

Shield: GNC

### Power Adapter

110V AC, 60Hz to 5V DC, 300mA



63 Great Road, Maynard, MA 01754  
1-800-326-1088  
www.revolabs.com  
info@revolabs.com

Hear Every Word!