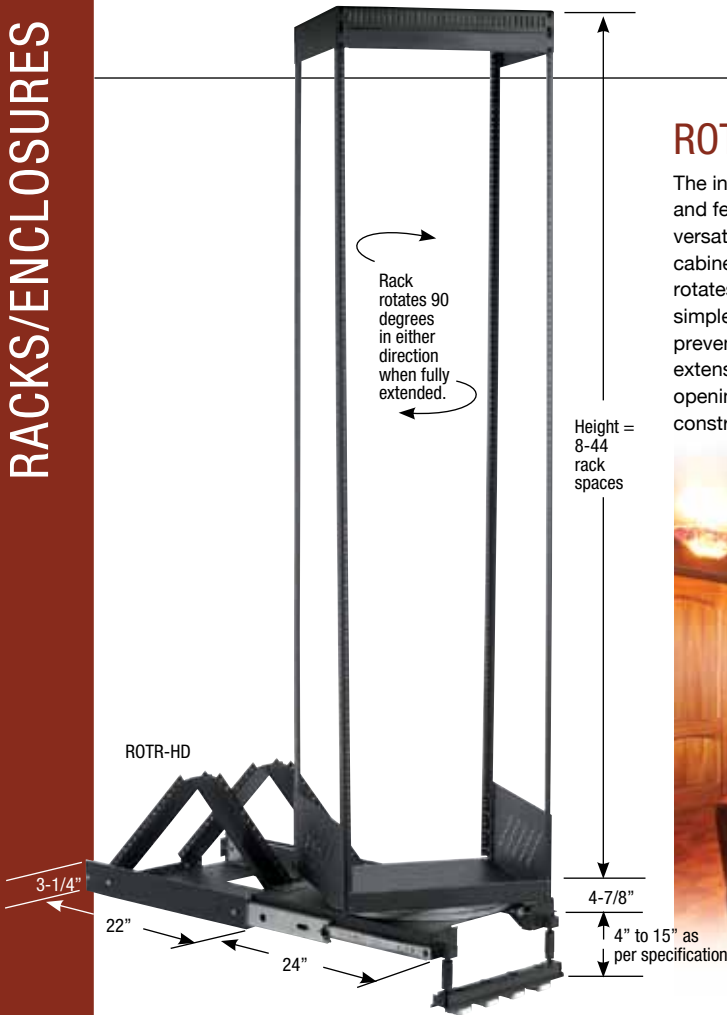


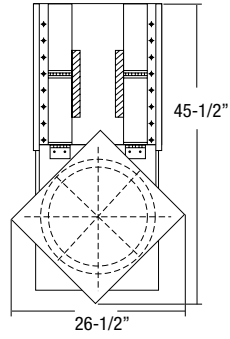
ROTR-HD heavy duty

The innovative Raxxess ROTR-HD rack is available in sizes up to 44 rack units and features a weight capacity of 650 pounds properly distributed. For maximum versatility and ease of use, our ROTR-HD is perfect for installations in walls, closets, cabinetry and custom millwork. The rack extends out on ball bearing sliders and rotates 90 degrees in either direction making access to the rear of installed equipment simple and safe. The rack frame locks in place when retracted or in service position, preventing any unintended motion. To ensure stability, our factory height-adjusted extension truck bolts to the rack and supports the load in front of the cabinet opening. Articulating cable carriers allow for neat and organized cable storage. Solidly constructed of 13-gauge cold rolled steel.

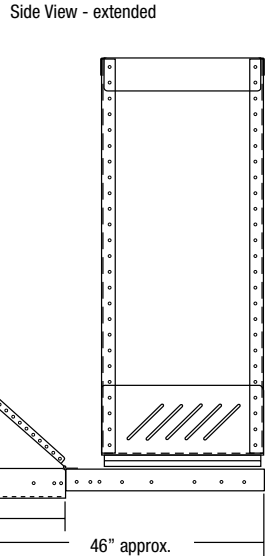
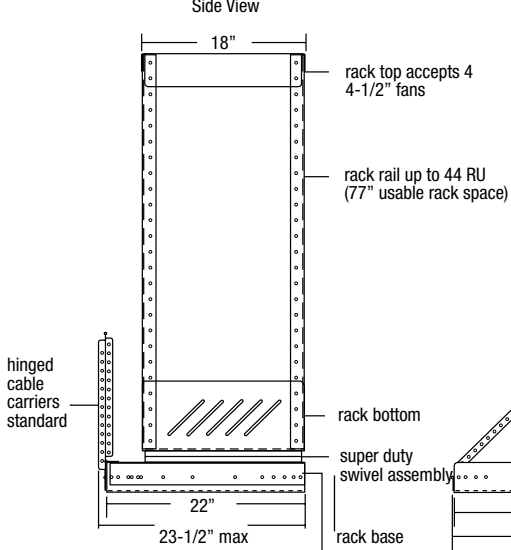
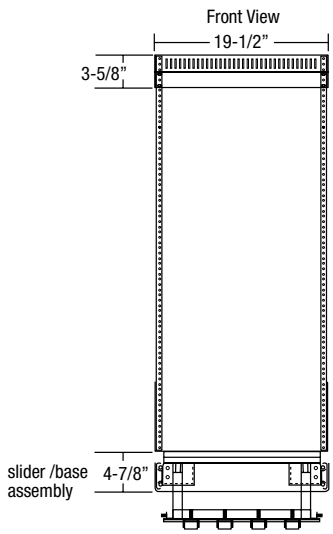


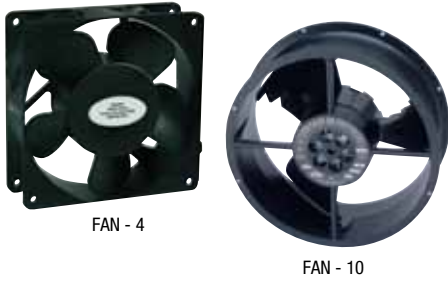
- standards**
- Articulating cable carriers
 - Front and rear rail
 - 22" deep mounting base
 - 18" deep rack frame
 - Recess up to 3" from front edge of opening
 - User-adjustable extension truck included for mounting 4" to 15" from floor

- features**
- Ideal in applications where bottom rack space is 4" or more above the floor
 - Available up to 44 rack units
 - 650 pound weight capacity
 - Ventilated top accepts up to four 4" cooling fans
 - Accommodates all 19" rackmount electronic components



finish
Black Powder Coat





FANS

The FAN-4 mounts easily, (hardware supplied), on our Fan Panels (FPL1, FPL2, FPL3). Rated at 39dBA per fan, 95CFM; 115 volts of AC. Power cord (without plug) attached.

The FAN-10 mounts easily to the roof insert (GAR-FTP10) offered with our GAR series racks, this 115 volt, 10 inch ball bearing fan moves 550 CFM and has a free air rating of 49dBA. Wire and mounting hardware included.

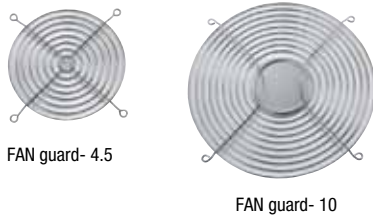


QUIET FAN

For noise sensitive jobs this 4-1/2" fan is rated at <30dBA, 50CFM.

QFPL quiet fan panel

Ultra quiet fan kits come pre-assembled with one or two fans mounted to brushed, black anodized aluminum panels with wire fan guards. 1200 AC power cords included. Rated at 28dBA per fan.



FAN GUARDS

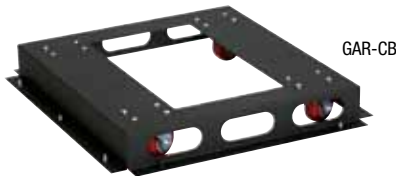
Fan guards available for both 4.5" and 10" fans.



CASTERS

a. CASTER-CMLCK Locking, hard rubber, 2.5", ball bearing swivel caster; 175lb capacity/caster. Use with KAR/SKR series.

b. CASTER-CM Same specs as above except non locking. Use with KAR/SKR series.



GAR caster base

16 gauge steel base fits within bottom opening of our GAR rack and provides stability when racks are being moved. Comes complete with casters.



EKO knockout panel

Our new 3U multi-purpose connector panel provides a variety of laser-cut knockouts for electrical conduit, audio and BNC connectors. Perfect for installation in the tops of our KAR racks, or as a general purpose connector panel in any rack installation. Constructed of 16-gauge steel, flanged for strength and finished in black powder coat.