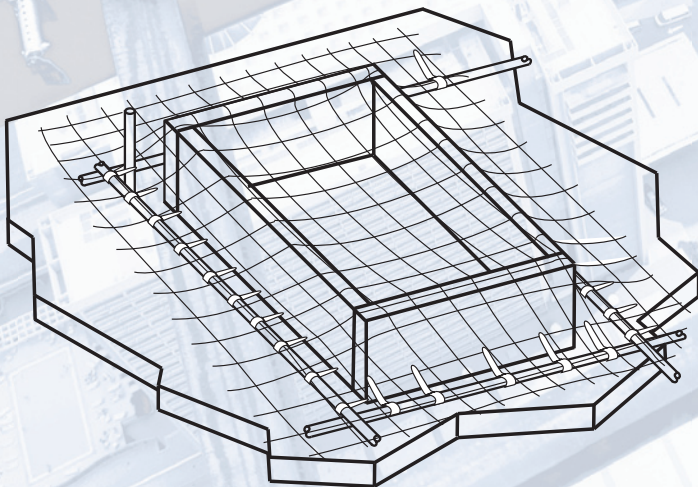




## Innovative Net System Provides Safe and Secure Fall Protection Around Small Floor Openings During Construction!

- System provides passive fall arrest and debris retention for personnel performing work around hazardous floor openings
- Innovative netting design eliminates the false sense of security associated with improperly fastened or secured planking or plywood solutions
- Net is sized on site for custom fit and is easily attached to reinforced steel using cable ties or tie wire prior to pouring the floor
- For added job site flexibility, the system can be positioned over or under the opening form work
- The nylon mesh construction is very durable for extended use and will not corrode like steel
- The mesh netting can be partially removed for penetrations for added versatility
- Removal of the system is fast and easy, simply cut mesh down using scissors or blade
- System is extremely economical for even the tightest job site budgets
- Designed to meet OSHA and ANSI standards with a 1,300 lb. breaking strength





# POUR-IN-PLACE NETTING SYSTEM

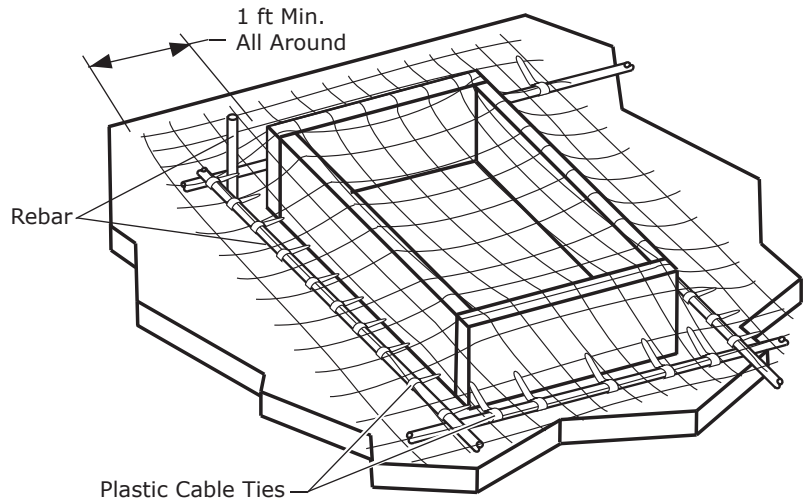


**Superior Protection** Most construction sites including high-rise structures contain small floor openings such as stairwells or elevator shafts that create fall hazards for workers. A common way to abate the hazard is to cover the openings with planking or plywood which is often improperly fastened or secured creating a false sense of security. DBI-SALA's Pour-In-Place Netting System is the solution, providing safe and secure fall protection as well as debris retention for personnel working on the protected floors.

**Fast and Easy Installation and Removal** The Pour-In-Place netting is sized on-site by the user for a custom fit. It is then easily attached to reinforcing steel using cable ties or tie wires prior to pouring the floor. For greater work site versatility, the system can be positioned over or under opening form work. The netting can also be partially removed for penetrations as the job site changes for added flexibility. Removal is just as fast, simply cut the netting down using a scissors or blade.

## Installation Procedures

- Step 1:** Don safety equipment for working near a leading edge or other fall hazard.
- Step 2:** Measure the opening. If the opening is more than 6 ft. in both directions, contact Capital Safety for a custom net.
- Step 3:** Cut the netting so that it is at least 2 feet larger than the opening in each dimension. For example if the opening is 3 ft. x 5 ft., the netting section must be 5 ft. x 7 ft. min.
- Step 4:** Place the netting over the opening and adjust it so there is at least 1 ft. of netting extended past the opening on each side.
- Step 5:** Use the supplied plastic cable ties or equivalent fastener to attach the netting to rebar. Attach the netting every 6 to 9 inches around the perimeter of the opening.
- Step 6:** Pour the concrete and allow it to cure.



< Installation Detail  
Prior to Concrete Pour

Pour-In-Place Netting  
System After Installation  
v



## Pour-In-Place Netting Models:

**4102001:** Pour-In-Place Netting System, 8' x 50' (2.44m x 15.25m) strip of 375 nylon mesh, and 25 plastic cable ties.

**4102002:** Pour-In-Place Netting System, 8' x 100' (2.44m x 30.5m) strip of 375 nylon mesh, and 25 plastic cable ties.

*Custom Sizes are Available, Contact Capital Safety for Information.*

## Specifications:

**Minimum Breaking Strength:** 1,300 lbs. (5.2kn) **Construction:** #375 Nylon Mesh **Netting Size:** Model 4102001 is 8' wide x 50' long (2.44m x 15.25m), Model 4102002 is 8' wide x 100' long (2.44m x 30.5m) **Weight:** Model 4102001 is 26 lbs. (11.7kg), Model 4102002 is 50 lbs. (22.5kg) **Standards:** Meets OSHA and ANSI Standards

## Capital Safety

USA: 800.328.6146 • Canada: 800.387.7484 • Asia: +65 6558 7758 • Australia: 1800 245 002 • New Zealand: 0800 212 505  
Europe, Middle East, Africa: +33 (0)4 97 10 00 10 • Northern Europe: +44 (0) 1928 571324  
[www.capitalsafety.com](http://www.capitalsafety.com) • [info@capitalsafety.com](mailto:info@capitalsafety.com)