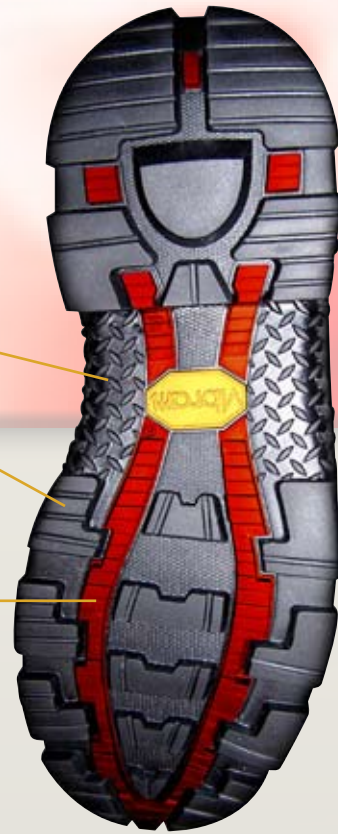


Multi Density Footbed

Engineered Orthotic Sock Liner reduces foot, leg & back fatigue



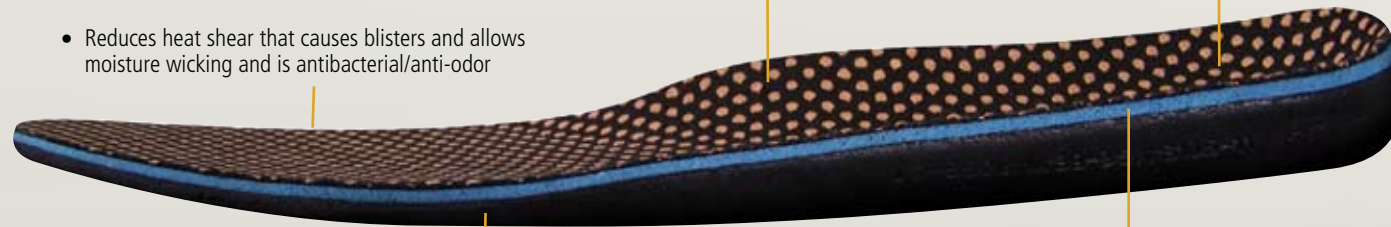
- Elastomer performance gel at the ball of the foot and the heel absorbs and disperses impact energy instead of concentrating it all in one place enabling that energy to vibrate up the leg into the lower back



- Rugged diamond plated ladder shank area increases traction when climbing ladders.
- Molded Cement Outsole with Articulating Louvers provides additional traction to the medial side of the foot
- Red no skid pattern helps reduce slippage in wet conditions and releases water from being trapped beneath the outsole

- Nano printing technology on the sock liner cover promotes circulation to the foot and legs

- Molded deep heelcup for ultra stability corrects overpronation



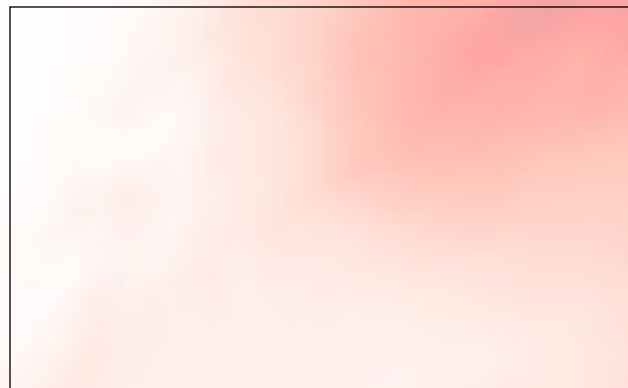
- Reduces heat shear that causes blisters and allows moisture wicking and is antibacterial/anti-odor

- Energy Return Polyurethane that cushions the cradles foot and adds comfort while reducing foot, leg & back fatigue & provides proper body alignment

- EVA memory foam over time will take the shape of the foot creating a cradle effect for perfect fit. This EVA memory foam rests on top of the energy return polyurethane foam layer which adds superior shock absorbency



FIRE-DEX®
 780 SOUTH PROGRESS DRIVE
 MEDINA, OHIO 44256
 PHONE: 330.723.0000
 FAX: 330.723.0035
 www.firedex.com



Fire-Dex®

Protection for the Heat of the Battle®



Fire-Dex®
FOOTWEAR

Boot Components



- Pull-on loops are reinforced with extra layer of leather and Kevlar thread to guarantee them for the life of the boot under normal wearing conditions

Quick to don and doff with gloved hand

- 2.2 mm silicone tanned FR Full grain, Heavy weight leather

- 3M Silver Industrial Wash Flame resistant fabric reflective Trim (8935)

Enhances visibility

- 3D Vulcanized rubber heel guard

Promotes longevity, creates and maintains shape of ergonomically designed heel cup

- 3D vulcanized protective rubber toe guard

Provides additional grip where you need it and promotes longevity of toe cap

- Toe spring and heel spring reduces or eliminates impacts zones and creates a proper walking pattern that reduces foot, leg and back fatigue



- The advanced technology in CROSSTECH Footwear Fabric by W.L. Gore provides durable, breathable protection without compromising comfort or agility

- Lined with 400g of Polyfelt

Providing lightweight insulation

- 200g of Kevlar by DuPont

Providing the most innovative thermal and cut resistant barrier

- Composite protective toe cap. Complies with NFPA/CSA/ANSI Specifications

- Multi density footbed

- Lenzi puncture resistant fabric

Adds protection & enable more flexibility in the boot

- Ladder Shank

