



Winches & Brackets

A Capital Safety Company



W W W - U C I S a f e t y S y s t e m s - C O M

CONTENTS

History of Unique Concepts Limited	2
Introduction to Winches & Brackets	3
Advanced Series 100 Digital Winches	4
Advanced Series 200 Digital Winches	5
Advanced Series 300 Digital Winches	6
Advanced 100 Series 1/4" - 3/8" Cable Winches ...	7
Advanced 200 Series 1/4" - 3/8" Cable Winches ...	8
Advanced 300 Series 1/4" - 3/8" Cable Winches ...	9
Advanced 300 Series 1/4" - 5/8" Rope Winches ..	10
Continuous Feed Rope Winches	11
Basic Winch Packages	12
Basic Winch Packages (continued)	13
Universal Material Handling Winches	14
UCL Material Handling Basic Winch	15
Brackets & Adapters	15
Bags & Accessories	16



Unique Concepts has specialized in the design and manufacture of confined space, fall protection & rescue systems for over 18 years. Our unique experience in this field allows us to offer products and services that can be copied, but never equaled.

1. *ISO 9001:2000 Registered.* Unique Concepts is constantly improving our design and manufacturing process to provide unparalleled service to our customers.

2. *Quality Standards.* Unlike others, Unique Concepts keeps as much of its design and manufacture as possible under our own control to ensure the highest quality of manufacture and parts.

3. *Certified Welding Inspected by Third Party Experts.* Our welding is certified by the Canadian Welding Bureau (CWB) to Canadian Standards Associations (CSA) standards.

4. *Experienced Design.* Our customers benefit from the wealth of experience our long serving managerial and design staff brings to bear on any question. We hold 18 patents, and more are coming.

5. *Third Party Validation of Systems.* We physically test our products at our facility. Our specifications sheets are certified by Delta-T Engineering, who witness & validate our tests. BSI, from the United Kingdom, provides our third party CE testing and reporting services.

6. *Modular Approach to Systems.* One system does not work for all applications! Our systems are engineered to be modular. One system can be easily adapted to many different situations. The result: less costly and more effective solutions.

7. *Custom Design and Manufacture.* Not in our catalogues? Let's talk. You may be surprised by what we can do for you. We amaze our customers with solutions that work for their specific applications. Chances are we have already designed a product that can be modified or adapted for your needs.

8. *Constant Innovation.* Unique Concepts is constantly looking for ways to improve existing products and develop new ones. We have constantly reinvested 5% of gross revenue into research and development.

You are reading the brochure highlighted below:

Look for these additional UCL Accessory brochures marked * to accompany this catalogue:

Hoists, Davits, Bases & Accessories - #9700101

Vehicle Hitch Mount Sleeve - #9700102

Counterweight Systems - #9700103

Winches & Brackets - #9700104

Tripods & Accessories - #9700105

Pole Hoist - #9700106

Side Entry/Tank Pod Systems - #9700107

Portable Fall Arrest Systems - #9700108

Engineered Systems - #9700109

Portable Tanker Access Ladder Sys. - #9700110

Basic Hoists - #9700111

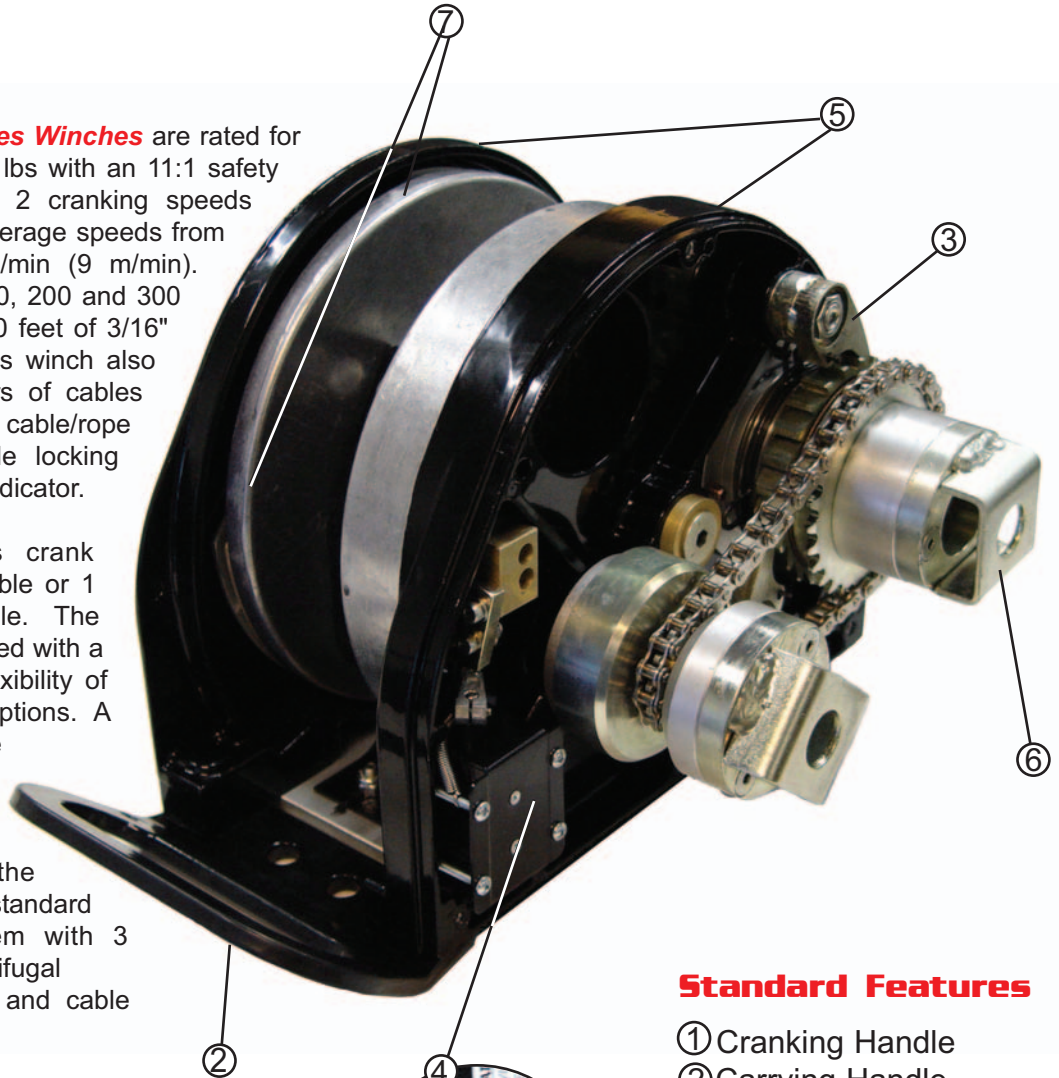
Fold Up Hoist - #9700112

Glide 360 Rail System - #9700113

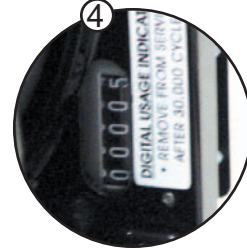
UCL Product Summary - #9700114

The **UCL Advanced Digital Series Winches** are rated for a maximum working load of 450 lbs with an 11:1 safety factor. This winch offers 1 or 2 cranking speeds capable of retrieval/descent at average speeds from 13ft/min (4 m/min) up to 30 ft/min (9 m/min). Available in 3 standard sizes, 100, 200 and 300 Series winches holding up to 300 feet of 3/16" (5mm) diameter cable/rope. This winch also accommodates various diameters of cables up to 3/8" and ropes up to 5/8". All cable/rope assemblies come with a double locking swivel snap hook with overload indicator.

Digital Series Winch features crank handle options: 2 speed removable or 1 speed permanent mounted handle. The removable handle can be combined with a power drive option giving the flexibility of manual or powered cranking options. A unique feature of the winch is the "digital usage indicator" system that counts the revolutions of the drum to determine service intervals and is exclusive to the Digital Series Winch. Additional standard features include braking system with 3 independent working pawls, centrifugal back-up brake, carrying handle and cable retainer spring.



Advanced Series Digital Winch Operator's Manual
Pt#: 19372



Standard Features

- ① Cranking Handle
- ② Carrying Handle
- ③ (3) Braking Pawls
- ④ Digital Usage Indicator
- ⑤ Cast Aluminum Housing
- ⑥ Brake Wear Indicator
- ⑦ Centrifugal Brake

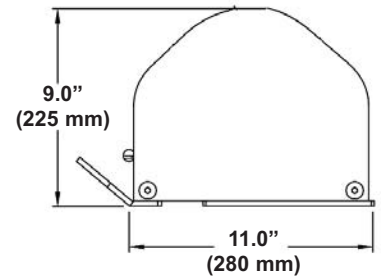
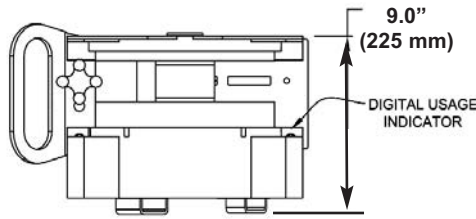
UCL Digital Winches come with a standard 5 year or 30,000 cycle count service interval.



- Man rated for raising, lowering or supporting personnel.
- Designed specifically for confined space entry/retrieval.
- Digital usage indicator monitors extent of winch use.
- The load can only move if the handle is turned. A friction brake is engaged by a minimum of 5 lbs weight.
- Triple redundant braking mechanism with inertial (centrifugal) safety back up brake.
- Brake pad wear indicator constantly monitors the condition of the braking mechanism.
- Lightweight (35 lbs)with durable, powder-coated, cast aluminum housing.
- Working load 450 lbs.
- Double locking swivel safety snaps standard on all cables.
- Sealed bearings at all contact points.
- All hardware is Zinc plated.
- All components are zinc-plated steel or anodized aluminum.

Advanced 100 Digital Series Winches

The UCL Advanced Digital 100 Series Winch holds up to 100 ft (30m) of 3/16" (5mm) diameter cable/rope. This page offers cable/rope assemblies that can be fitted onto the 100 Series winches and combines the different crank drive configurations as well as package part numbers for easy ordering of the winch and cable assembly that best suits your application.



Advanced Digital 100 Series 1 Speed Winch w/ Permanent Mounted Handle: This Digital 100 Series winch includes a permanently mounted handle to the 9:1 hub drive with an average speed of 13 ft/min (4m/min). This handle offers durability, a foldaway crank handle and is simple to use.



Part#	Price	Cable/Rope Description	Actual Length	Part #	Working Length	Cable Price	Package Part#	Total Weight	Price
18013		* 3/16" (5mm) Dia. Stainless Steel	70ft (21.3m)	10636	60ft (18m)		18551	30.5 lbs (13.8kg)	
			100ft (30m)	10637	90ft (27m)		18552	32.5 lbs (14.7kg)	
		3/16" (5mm) Dia. Galvanized Steel	70ft (21.3m)	16177	60ft (18m)		18553	30.5 lbs (13.8kg)	
			100ft (30m)	19116	90ft (27m)		18554	32.5 lbs (14.7kg)	
		3/16" (5mm) Non-Rotating Stainless Steel	70ft (21.3m)	15159	60ft (18m)		18555	30.5 lbs (13.8kg)	
			100ft (30m)	15158	90ft (27m)		18556	32.5 lbs (14.7kg)	
		3/16" (5mm) Dia. Technora Cord	70ft (21.3m)	16838	60ft (18m)		18557	27 lbs (12.2kg)	
			100ft (30m)	18684	90ft (27m)		18615	27.5 lbs (12.4kg)	

*** UCL RECOMMENDS THIS CABLE FOR THE BEST PERFORMANCE.**

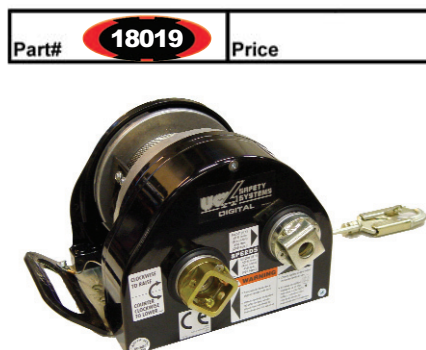
Advanced Digital 100 Series 2 Speed Winch w/ Removable Handle: This Digital 100 Series winch includes a removable aluminum crank handle to utilize both our 9:1 and 4:1 drives. These two drives offer the capability of retrieval/descent at average speeds from 13ft/min (4 m/min) up to 30 ft/min (9 m/min).



Part#	Price	Cable/Rope Description	Actual Length	Part #	Working Length	Cable Price	Package Part#	Total Weight	Price
18016		* 3/16" (5mm) Dia. Stainless Steel	70ft (21.3m)	10636	60ft (18m)		18558	30.5 lbs (13.8kg)	
			100ft (30m)	10637	90ft (27m)		18559	32.5 lbs (14.7kg)	
		3/16" (5mm) Dia. Galvanized Steel	70ft (21.3m)	16177	60ft (18m)		18560	30.5 lbs (13.8kg)	
			100ft (30m)	19116	90ft (27m)		18561	32.5 lbs (14.7kg)	
		3/16" (5mm) Non-Rotating Stainless Steel	70ft (21.3m)	15159	60ft (18m)		18562	30.5 lbs (13.8kg)	
			100ft (30m)	15158	90ft (27m)		18563	32.5 lbs (14.7kg)	
		3/16" (5mm) Dia. Technora Cord	70ft (21.3m)	16838	60ft (18m)		18564	27 lbs (12.2kg)	
			100ft (30m)	18684	90ft (27m)		18616	27.5 lbs (12.4kg)	

*** UCL RECOMMENDS THIS CABLE FOR THE BEST PERFORMANCE.**

Advanced Digital 100 Series 2 Speed Winch w/ 9:1 Power Drive & 4:1 Removable Handle: The Power Drive Digital Winch features power drive hub on the 9:1 drive. An overload protection clutch*** installs between this power drive hub and an electric or pneumatic drill** to eliminate overloading the winch during retrieval. This clutch also protects the winch operator and the retrieved worker from injury. The clutch is installed and removed without the use of tools when switching to the 4:1 manual crank option in emergencies. **** UCL recommends tested drills for use with this winch, please refer to our specification sheet 12935/12936. *** Overload Protection Clutches sold separately. Refer to page 16 for details.**

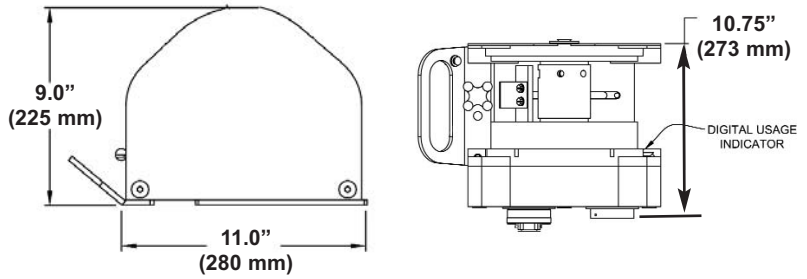


Part#	Price	Cable/Rope Description	Actual Length	Part #	Working Length	Cable Price	Package Part#	Total Weight	Price
18019		* 3/16" (5mm) Dia. Stainless Steel	70ft (21.3m)	10636	60ft (18m)		18565	30.5 lbs (13.8kg)	
			100ft (30m)	10637	90ft (27m)		18566	32.5 lbs (14.7kg)	
		3/16" (5mm) Dia. Galvanized Steel	70ft (21.3m)	16177	60ft (18m)		18567	30.5 lbs (13.8kg)	
			100ft (30m)	19116	90ft (27m)		18568	32.5 lbs (14.7kg)	
		3/16" (5mm) Non-Rotating Stainless Steel	70ft (21.3m)	15159	60ft (18m)		18569	30.5 lbs (13.8kg)	
			100ft (30m)	15158	90ft (27m)		18570	32.5 lbs (14.7kg)	
		3/16" (5mm) Dia. Technora Cord	70ft (21.3m)	16838	60ft (18m)		18571	27 lbs (12.2kg)	
			100ft (30m)	18684	90ft (27m)		18617	27.5 lbs (12.4kg)	

*** UCL RECOMMENDS THIS CABLE FOR THE BEST PERFORMANCE.**

Advanced 200 Series Digital Winches

The UCL Advanced Digital 200 Series Winch holds up to 200 ft (60m) of 3/16" (5mm) diameter cable/rope. This page offers cable/rope assemblies that can be fitted onto the 200 Series winches and combines the different crank drive configurations as well as package part numbers for easy ordering of the winch and cable assembly that best suits your application.



Advanced Digital 200 Series 1 Speed Winch w/ Permanent Mounted Handle: This Digital 200 Series winch includes a permanently mounted handle to the 9:1 hub drive with an average speed of 13 ft/min (4m/min). This handle offers durability, a foldaway crank handle and is simple to use.



Part#	Price	Cable/Rope Description	Actual Length	Part #	Working Length	Cable Price	Package Part#	Total Weight	Price
18014		*3/16" (5mm) Dia. Stainless Steel	150ft(45.7m)	10639	140ft (42m)		18572	40 lbs (18.4kg)	
			200ft (61m)	12269	190ft (58m)		18573	43 lbs (19.5kg)	
18014		3/16" (5mm) Dia. Galvanized Steel	150ft(45.7m)	19571	140ft (42m)		18574	40 lbs (18.4kg)	
			200ft (61m)	19572	190ft (58m)		18575	43 lbs (19.5kg)	
18014		3/16" (5mm) Non-Rotating Stainless Steel	150ft(45.7m)	15061	140ft (42m)		18576	40 lbs (18.4kg)	
			200ft (61m)	15093	190ft (58m)		18577	43 lbs (19.5kg)	
18014		3/16" (5mm) Dia. Technora Cord	150ft(45.7m)	19573	140ft (42m)		18578	32 lbs (14.5kg)	
			200ft (61m)	18685	190ft (58m)		18618	32.5 lbs (14.7kg)	

*** UCL RECOMMENDS THIS CABLE FOR THE BEST PERFORMANCE.**

Advanced Digital 200 Series 2 Speed Winch w/ Removable Handle: This Digital 200 Series winch includes a removable aluminum crank handle to utilize both our 9:1 and 4:1 drives. These two drives offer the capability of retrieval/descent at average speeds from 13ft/min (4 m/min) up to 30 ft/min (9 m/min).



Part#	Price	Cable/Rope Description	Actual Length	Part #	Working Length	Cable Price	Package Part#	Total Weight	Price
18017		*3/16" (5mm) Dia. Stainless Steel	150ft(45.7m)	10639	140ft (42m)		18579	40 lbs (18.4kg)	
			200ft (61m)	12269	190ft (58m)		18580	43 lbs (19.5kg)	
18017		3/16" (5mm) Dia. Galvanized Steel	150ft(45.7m)	19571	140ft (42m)		18581	40 lbs (18.4kg)	
			200ft (61m)	19572	190ft (58m)		18582	43 lbs (19.5kg)	
18017		3/16" (5mm) Non-Rotating Stainless Steel	150ft(45.7m)	15061	140ft (42m)		18583	40 lbs (18.4kg)	
			200ft (61m)	15093	190ft (58m)		18584	43 lbs (19.5kg)	
18017		3/16" (5mm) Dia. Technora Cord	150ft(45.7m)	19573	140ft (42m)		18585	32 lbs (14.5kg)	
			200ft (61m)	18685	190ft (58m)		18619	32.5 lbs (14.7kg)	

*** UCL RECOMMENDS THIS CABLE FOR THE BEST PERFORMANCE.**

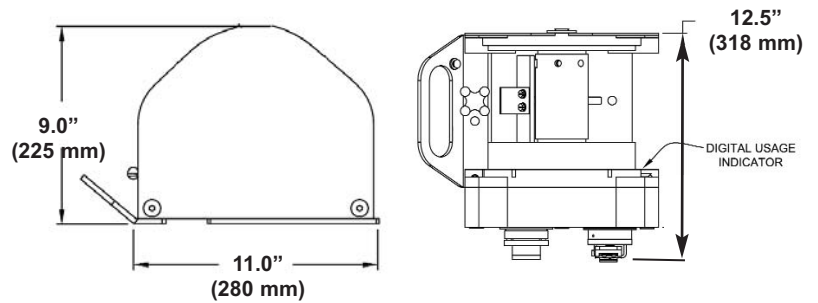
Advanced Digital 200 Series 2 Speed Winch w/ 9:1 Power Drive & 4:1 Removable Handle: The Power Drive Digital Winch features power drive hub on the 9:1 drive. An overload protection clutch*** installs between this power drive hub and an electric or pneumatic drill** to eliminate overloading the winch during retrieval. This clutch also protects the winch operator and the retrieved worker from injury. The clutch is installed and removed without the use of tools when switching to the 4:1 manual crank option in emergencies. ** UCL recommends tested drills for use with this winch, please refer to our specification sheet 12935/12936. *** Overload Protection Clutches sold separately. Refer to page 16 for details.



Part#	Price	Cable/Rope Description	Actual Length	Part #	Working Length	Cable Price	Package Part#	Total Weight	Price
18020		*3/16" (5mm) Dia. Stainless Steel	150ft(45.7m)	10639	140ft (42m)		18586	40 lbs (18.4kg)	
			200ft (61m)	12269	190ft (58m)		18587	43 lbs (19.5kg)	
18020		3/16" (5mm) Dia. Galvanized Steel	150ft(45.7m)	19571	140ft (42m)		18588	40 lbs (18.4kg)	
			200ft (61m)	19572	190ft (58m)		18589	43 lbs (19.5kg)	
18020		3/16" (5mm) Non-Rotating Stainless Steel	150ft(45.7m)	15061	140ft (42m)		18590	40 lbs (18.4kg)	
			200ft (61m)	15093	190ft (58m)		18591	43 lbs (19.5kg)	
18020		3/16" (5mm) Dia. Technora Cord	150ft(45.7m)	19573	140ft (42m)		18592	32 lbs (14.5kg)	
			200ft (61m)	18685	190ft (58m)		18620	32.5 lbs (14.7kg)	

*** UCL RECOMMENDS THIS CABLE FOR THE BEST PERFORMANCE.**

The UCL Advanced Digital 300 Series Winch holds up to 300 ft (90m) of 3/16" (5mm) diameter cable/rope. This page offers cable/rope assemblies that can be fitted onto the 300 Series winches and combines the different crank drive configurations as well as package part numbers for easy ordering of the winch and cable assembly that best suits your application.



Advanced Digital 300 Series 1 Speed Winch w/ Permanent Mounted Handle: This Digital 300 Series winch includes a permanently mounted handle to the 9:1 hub drive with an average speed of 13 ft/min (4m/min). This handle offers durability, a foldaway crank handle and is simple to use.

Part#	18015	Price					Package Part#	Total Weight	Price
	* 3/16" (5mm) Dia. Stainless Steel	250ft(76.2m)	12270	240ft (73m)		18593	50lbs (22.6kg)		
		300ft (91m)	12271	290ft (88m)		18594	53.5 lbs (19.5kg)		
	3/16" (5mm) Dia. Galvanized Steel	250ft(76.2m)	19574	240ft (73m)		18595	50lbs (22.6kg)		
		300ft (91m)	19575	290ft (88m)		18596	53.5 lbs (19.5kg)		
	3/16" (5mm) Non-Rotating Stainless Steel	250ft(76.2m)	18244	240ft (73m)		18597	50lbs (22.6kg)		
		300ft (91m)	19577	290ft (88m)		18598	53.5 lbs (19.5kg)		
	3/16" (5mm) Dia. Technora Cord	250ft(76.2m)	19576	240ft (73m)		18599	37 lbs (16.7kg)		
		300ft (91m)	18686	290ft (88m)		18621	38 lbs (17.2kg)		

*** UCL RECOMMENDS THIS CABLE FOR THE BEST PERFORMANCE.**

Advanced Digital 300 Series 2 Speed Winch w/ Removable Handle: This Digital 300 Series winch includes a removable aluminum crank handle to utilize both our 9:1 and 4:1 drives. These two drives offer the capability of retrieval/descent at average speeds from 13ft/min (4 m/min) up to 30 ft/min (9 m/min).

Part#	18018	Price					Package Part#	Total Weight	Price
	* 3/16" (5mm) Dia. Stainless Steel	250ft(76.2m)	12270	240ft (73m)		18601	50lbs (22.6kg)		
		300ft (91m)	12271	290ft (88m)		18602	53.5 lbs (19.5kg)		
	3/16" (5mm) Dia. Galvanized Steel	250ft(76.2m)	19574	240ft (73m)		18603	50lbs (22.6kg)		
		300ft (91m)	19575	290ft (88m)		18604	53.5 lbs (19.5kg)		
	3/16" (5mm) Non-Rotating Stainless Steel	250ft(76.2m)	18244	240ft (73m)		18605	50lbs (22.6kg)		
		300ft (91m)	19577	290ft (88m)		18606	53.5 lbs (19.5kg)		
	3/16" (5mm) Dia. Technora Cord	250ft(76.2m)	19576	240ft (73m)		18607	37 lbs (16.7kg)		
		300ft (91m)	18686	290ft (88m)		18622	38 lbs (17.2kg)		

*** UCL RECOMMENDS THIS CABLE FOR THE BEST PERFORMANCE.**

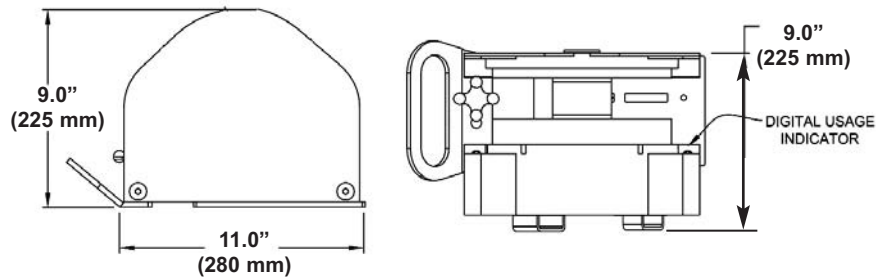
Advanced Digital 300 Series 2 Speed Winch w/ 9:1 Power Drive & 4:1 Removable Handle: The Power Drive Digital Winch features power drive hub on the 9:1 drive. An overload protection clutch*** installs between this power drive hub and an electric or pneumatic drill** to eliminate overloading the winch during retrieval. This clutch also protects the winch operator and the retrieved worker from injury. The clutch is installed and removed without the use of tools when switching to the 4:1 manual crank option in emergencies. ** UCL recommends tested drills for use with this winch, please refer to our specification sheet 12935/12936. *** Overload Protection Clutches sold separately. Refer to page 16 for details.

Part#	18021	Price					Package Part#	Total Weight	Price
	* 3/16" (5mm) Dia. Stainless Steel	250ft(76.2m)	12270	240ft (73m)		18608	50lbs (22.6kg)		
		300ft (91m)	12271	290ft (88m)		18609	53.5 lbs (19.5kg)		
	3/16" (5mm) Dia. Galvanized Steel	250ft(76.2m)	19574	240ft (73m)		18610	50lbs (22.6kg)		
		300ft (91m)	19575	290ft (88m)		18611	53.5 lbs (19.5kg)		
	3/16" (5mm) Non-Rotating Stainless Steel	250ft(76.2m)	18244	240ft (73m)		18612	50lbs (22.6kg)		
		300ft (91m)	19577	290ft (88m)		18613	53.5 lbs (19.5kg)		
	3/16" (5mm) Dia. Technora Cord	250ft(76.2m)	19576	240ft (73m)		18614	37 lbs (16.7kg)		
		300ft (91m)	18686	290ft (88m)		18623	38 lbs (17.2kg)		

*** UCL RECOMMENDS THIS CABLE FOR THE BEST PERFORMANCE.**

Advanced 100 Series 1/4" - 3/8" Cable Winches

The UCL Advanced Digital 100 Series 1/4" - 3/8" Cable Winch holds three different diameters of cable. This page offers 1/4", 5/16" & 3/8" diameter cable assemblies that can be fit onto the 100 Series winches and combines the different crank drive configurations as well as package part numbers for easy ordering of the winch and cable assembly that best suits your application.

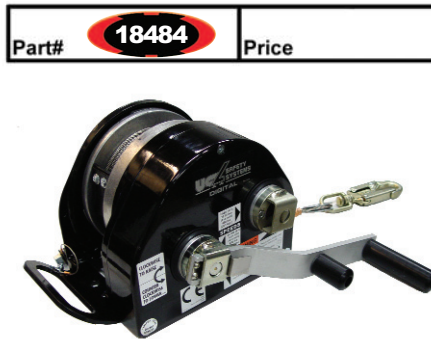


Advanced Digital 100 Series 1 Speed Winch w/ Permanent Mounted Handle: This Digital 100 Series winch includes a permanently mounted handle to the 9:1 hub drive with an average speed of 13 ft/min (4m/min). This handle offers durability, a foldaway crank handle and is simple to use.



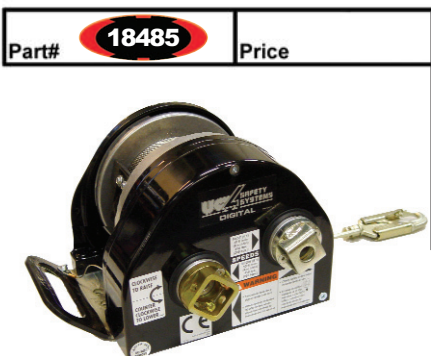
Part#	Price	Cable/Rope Description	Actual Length	Part#	Working Length	Cable Price	Package Part#	Total Weight	Price
18483		1/4" (6 mm) Dia. Stainless Steel	70ft (21.3m)	18687	60ft (18.2m)		18624	34lbs (15.4kg)	
		5/16" (8 mm) Stainless Steel	35ft (10.6m)	18690	30ft (9.1m)		18625	32lbs (14.5kg)	
		3/8" (10 mm) Stainless Steel	25ft (7.6m)	18693	20ft (6m)		18626	32 lbs (14.5kg)	

Advanced Digital 100 Series 2 Speed Winch w/ Removable Handle: This Digital 100 Series winch includes a removable aluminum crank handle to utilize both our 9:1 and 4:1 drives. These two drives offer the capability of retrieval/descent at average speeds from 13ft/min (4 m/min) up to 30 ft/min (9 m/min).



Part#	Price	Cable/Rope Description	Actual Length	Part#	Working Length	Cable Price	Package Part#	Total Weight	Price
18484		1/4" (6 mm) Dia. Stainless Steel	70ft (21.3m)	18687	60ft (18.2m)		18627	34 lbs (15.4kg)	
		5/16" (8 mm) Stainless Steel	35ft (10.6m)	18690	30ft (9.1m)		18628	32 lbs (14.5kg)	
		3/8" (10 mm) Stainless Steel	25ft (7.6m)	18693	20ft (6m)		18629	32 lbs (14.5kg)	

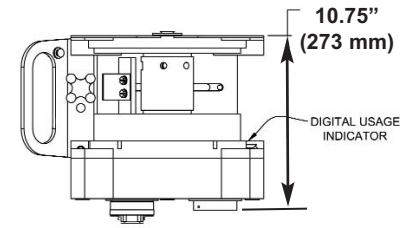
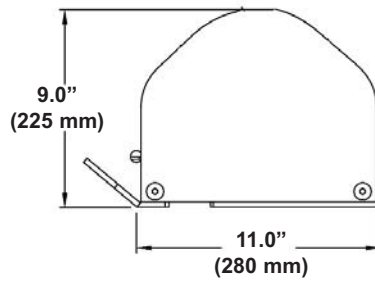
Advanced Digital 100 Series 2 Speed Winch w/ 9:1 Power Drive & 4:1 Removable Handle: The Power Drive Digital Winch features power drive hub on the 9:1 drive. An overload protection clutch*** installs between this power drive hub and an electric or pneumatic drill** to eliminate overloading the winch during retrieval. This clutch also protects the winch operator and the retrieved worker from injury. The clutch is installed and removed without the use of tools when switching to the 4:1 manual crank option in emergencies. ** UCL recommends tested drills for use with this winch, please refer to our specification sheet 12935/12936. *** Overload Protection Clutches sold separately, refer to page 16 for details.



Part#	Price	Cable/Rope Description	Actual Length	Part#	Working Length	Cable Price	Package Part#	Total Weight	Price
18485		1/4" (6 mm) Dia. Stainless Steel	70ft (21.3m)	18687	60ft (18.2m)		18630	34lbs (15.4kg)	
		5/16" (8 mm) Stainless Steel	35ft (10.6m)	18690	30ft (9.1m)		18631	32lbs (14.5kg)	
		3/8" (10 mm) Stainless Steel	25ft (7.6m)	18693	20ft (6m)		18632	32 lbs (14.5kg)	

Advanced 200 Series 1/4" - 3/8" Cable Winches

The UCL Advanced Digital 200 Series 1/4" - 3/8" Cable Winch holds three different diameters of cable. This page offers 1/4", 5/16" & 3/8" diameter cable assemblies that can be fit onto the 200 Series winches and combines the different crank drive configurations as well as package part numbers for easy ordering of the winch and cable assembly that best suits your application.



Advanced Digital 200 Series 1 Speed Winch w/ Permanent Mounted Handle: This Digital 200 Series winch includes a permanently mounted handle to the 9:1 hub drive with an average speed of 13 ft/min (4m/min). This handle offers durability, a foldaway crank handle and is simple to use.



Part#	Price	Cable/Rope Description	Actual Length	Part#	Working Length	Cable Price	Package Part#	Total Weight	Price
18486		1/4" (6 mm) Dia. Stainless Steel	140ft (42.6m)	18688	130ft (39.6m)		18633	45.5lbs (20.4kg)	
		5/16" (8 mm) Stainless Steel	70ft (21.3m)	18691	65ft (19.8m)		18634	42lbs (19kg)	
		3/8" (10 mm) Stainless Steel	50ft (15.2m)	18694	45ft (13.7m)		18635	42lbs (19kg)	

Advanced Digital 200 Series 2 Speed Winch w/ Removable Handle: This Digital 200 Series winch includes a removable aluminum crank handle to utilize both our 9:1 and 4:1 drives. These two drives offer the capability of retrieval/descent at average speeds from 13ft/min (4 m/min) up to 30 ft/min (9 m/min).



Part#	Price	Cable/Rope Description	Actual Length	Part#	Working Length	Cable Price	Package Part#	Total Weight	Price
18487		1/4" (6 mm) Dia. Stainless Steel	140ft (42.6m)	18688	130ft (39.6m)		18636	45.5lbs (20.4kg)	
		5/16" (8 mm) Stainless Steel	70ft (21.3m)	18691	65ft (19.8m)		18637	42lbs (19kg)	
		3/8" (10 mm) Stainless Steel	50ft (15.2m)	18694	45ft (13.7m)		18638	42lbs (19kg)	

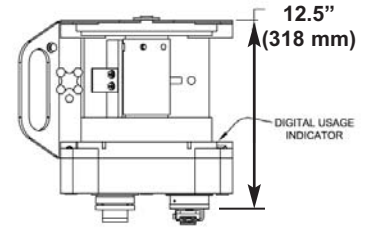
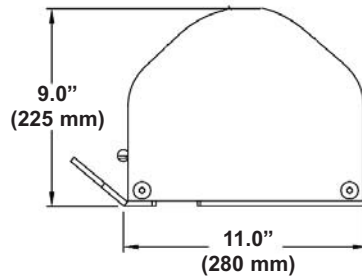
Advanced Digital 200 Series 2 Speed Winch w/ 9:1 Power Drive & 4:1 Removable Handle: The Power Drive Digital Winch features power drive hub on the 9:1 drive. An overload protection clutch*** installs between this power drive hub and an electric or pneumatic drill** to eliminate overloading the winch during retrieval. This clutch also protects the winch operator and the retrieved worker from injury. The clutch is installed and removed without the use of tools when switching to the 4:1 manual crank option in emergencies. ** UCL recommends tested drills for use with this winch, please refer to our specification sheet 12935/12936. *** Overload Protection Clutches sold separately, refer to page 16 for details.



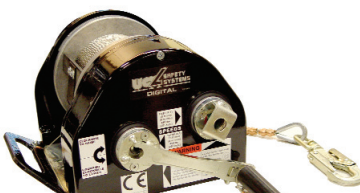
Part#	Price	Cable/Rope Description	Actual Length	Part#	Working Length	Cable Price	Package Part#	Total Weight	Price
18488		1/4" (6 mm) Dia. Stainless Steel	140ft (42.6m)	18688	130ft (39.6m)		18639	45.5lbs (20.4kg)	
		5/16" (8 mm) Stainless Steel	70ft (21.3m)	18691	65ft (19.8m)		18640	42lbs (19kg)	
		3/8" (10 mm) Stainless Steel	50ft (15.2m)	18694	45ft (13.7m)		18641	42lbs (19kg)	

Advanced 300 Series 1/4" - 3/8" Cable Winches

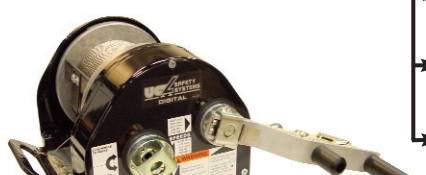
The UCL Advanced Digital 300 Series 1/4" - 3/8" Cable Winch holds three different diameters of cable. This page offers 1/4", 5/16" & 3/8" diameter cable assemblies that can be fit onto the 300 Series winches and combines the different crank drive configurations as well as package part numbers for easy ordering of the winch and cable assembly that best suits your application.




Advanced Digital 300 Series 1 Speed Winch w/ Permanent Mounted Handle: This Digital 300 Series winch includes a permanently mounted handle to the 9:1 hub drive with an average speed of 13 ft/min (4m/min). This handle offers durability, a foldaway crank handle and is simple to use.

Part#	Price	Cable/Rope Description	Actual Length	Part#	Working Length	Cable Price	Package Part#	Total Weight	Price
	18489	1/4" (6 mm) Dia. Stainless Steel	210ft (64m)	18689	200ft (60.9m)		18642	57lbs (25.8kg)	
		5/16" (8 mm) Stainless Steel	100ft (30.4m)	18692	95ft (28.9m)		18643	51.5lbs (23.3kg)	
		3/8" (10 mm) Stainless Steel	75ft (22.8)	18695	70ft (21.3m)		18644	52lbs (23.5kg)	

Advanced Digital 300 Series 2 Speed Winch w/ Removable Handle: This Digital 300 Series winch includes a removable aluminum crank handle to utilize both our 9:1 and 4:1 drives. These two drives offer the capability of retrieval/descent at average speeds from 13ft/min (4 m/min) up to 30 ft/min (9 m/min).

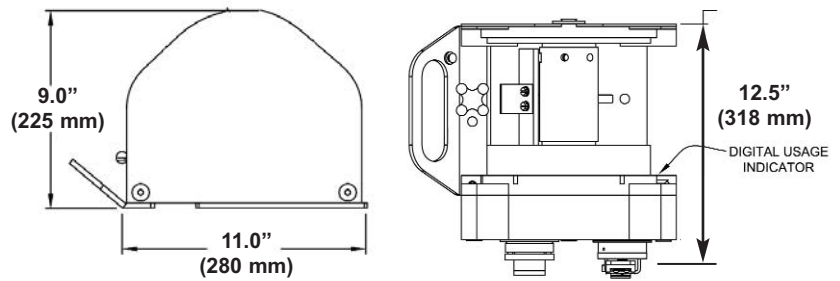
Part#	Price	Cable/Rope Description	Actual Length	Part#	Working Length	Cable Price	Package Part#	Total Weight	Price
	18490	1/4" (6 mm) Dia. Stainless Steel	210ft (64m)	18689	200ft (60.9m)		18645	57lbs (25.8kg)	
		5/16" (8 mm) Stainless Steel	100ft (30.4m)	18692	95ft (28.9m)		18646	51.5lbs (23.3kg)	
		3/8" (10 mm) Stainless Steel	75ft (22.8m)	18695	70ft (21.3m)		18647	52lbs (23.5kg)	

Advanced Digital 300 Series 2 Speed Winch w/ 9:1 Power Drive & 4:1 Removable Handle: The Power Drive Digital Winch features power drive hub on the 9:1 drive. An overload protection clutch*** installs between this power drive hub and an electric or pneumatic drill** to eliminate overloading the winch during retrieval. This clutch also protects the winch operator and the retrieved worker from injury. The clutch is installed and removed without the use of tools when switching to the 4:1 manual crank option in emergencies. ** UCL recommends tested drills for use with this winch, please refer to our specification sheet 12935/12936. *** Overload Protection Clutches sold separately, refer to page 16 for details.

Part#	Price	Cable/Rope Description	Actual Length	Part#	Working Length	Cable Price	Package Part#	Total Weight	Price
	18491	1/4" (6 mm) Dia. Stainless Steel	210ft (64m)	18689	200ft (60.9m)		18648	57lbs (25.8kg)	
		5/16" (8 mm) Stainless Steel	100ft (30.4m)	18692	95ft (28.9m)		18649	51.5lbs (23.3kg)	
		3/8" (10 mm) Stainless Steel	75ft (22.8m)	18695	70ft (21.3m)		18650	52lbs (23.5kg)	

Advanced 300 Series 1/4" - 5/8" Rope Winch

The UCL Advanced Digital 300 Series 1/4" - 5/8" Rope Winch holds five different diameters of ropes. This offers four sizes Kernmantle ropes of 5/16", 3/8", 1/2" and 5/8" and one 1/4" Technora rope assembly. This page offers rope assemblies that can be fitted onto the 300 Series winches and combines the different crank drive configurations as well as package part numbers for easy ordering of the winch and rope assembly that best suits your application.



Advanced Digital 300 Series 1 Speed Winch w/Permanent Mounted Handle: This Digital 300 Series winch features a permanently mounted handle to the 9:1 hub drive with an average speed of 13 ft/min (4m/min). This handle offers durability, a foldaway crank handle and is simple to use.

Part#	Price	Cable/Rope Description	Actual Length	Part#	Working Length	Cable Price	Package Part#	Total Weight	Price
18497		5/16" (8mm) Diameter Kernmantle Rope	85 ft (25.9m)	18696	75ft (22.8m)		18651	36 lbs (16.3kg)	
		3/8" (10mm) Diameter Kernmantle Rope	60 ft (18.2m)	18697	50 ft (15.4m)		18652	36.5 lbs (16.5kg)	
		1/2" (12mm) Diameter Kernmantle Rope	50 ft (15.4m)	18698	45 ft (13.7m)		18653	37 lbs (16.7kg)	
		5/8" (16mm) Diameter Kernmantle Rope	25 ft (7.6m)	18699	20 ft (6m)		18654	36.5 lbs (16.5kg)	
		1/4" (6mm) Diameter Technora Rope	180 ft (54.8m)	18700	170 ft (51.8m)		18655	37.5 lbs (17kg)	

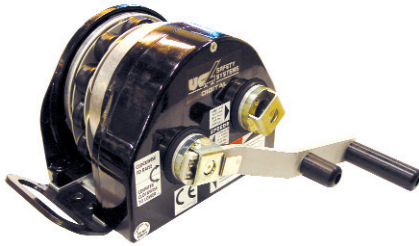
Advanced Digital 300 Series 2 Speed Winch w/ Removable Handle: This Digital 300 Series winch features a removable aluminum crank handle to utilize both our 9:1 and 4:1 drives. These two drives offer the capability of retrieval/descent at average speeds from 13ft/min (4 m/min) up to 30 ft/min (9 m/min).

Part#	Price	Cable/Rope Description	Actual Length	Part#	Working Length	Cable Price	Package Part#	Total Weight	Price
18498		5/16" (8mm) Diameter Kernmantle Rope	85 ft (25.9m)	18696	75ft (22.8m)		18656	36 lbs (16.3kg)	
		3/8" (10mm) Diameter Kernmantle Rope	60 ft (18.2m)	18697	50 ft (15.4m)		18657	36.5 lbs (16.5kg)	
		1/2" (12mm) Diameter Kernmantle Rope	50 ft (15.4m)	18698	45 ft (13.7m)		18658	37 lbs (16.7kg)	
		5/8" (16mm) Diameter Kernmantle Rope	25 ft (7.6m)	18699	20 ft (6m)		18659	36.5 lbs (16.5kg)	
		1/4" (6mm) Diameter Technora Rope	180 ft (54.8m)	18700	170 ft (51.8m)		18660	37.5 lbs (17kg)	

Advanced Digital 300 Series 2 Speed Winch w/Power Drive & Removable Handle: The Power Drive Digital Winch features power drive hub on the 9:1 drive. An overload protection clutch*** installs between this power drive hub and an electric or pneumatic drill** to eliminate overloading the winch during retrieval. This clutch also protects the winch operator and the retrieved worker from injury. The clutch is installed and removed without the use of tools when switching to the 4:1 manual crank option in emergencies. ** UCL recommends tested drills for use with this winch, please refer to our specification sheet 12935/12936. *** Overload Protection Clutches sold separately, refer to page 16 for details.

Part#	Price	Cable/Rope Description	Actual Length	Part#	Working Length	Cable Price	Package Part#	Total Weight	Price
18499		5/16" (8mm) Diameter Kernmantle Rope	85 ft (25.9m)	18696	75ft (22.8m)		18661	36 lbs (16.3kg)	
		3/8" (10mm) Diameter Kernmantle Rope	60 ft (18.2m)	18697	50 ft (15.4m)		18662	36.5 lbs (16.5kg)	
		1/2" (12mm) Diameter Kernmantle Rope	50 ft (15.4m)	18698	45 ft (13.7m)		18663	37 lbs (16.7kg)	
		5/8" (16mm) Diameter Kernmantle Rope	25 ft (7.6m)	18699	20 ft (6m)		18664	36.5 lbs (16.5kg)	
		1/4" (6mm) Diameter Technora Rope	180 ft (54.8m)	18700	170 ft (51.8m)		18665	37.5 lbs (17kg)	

Part#	13448	Price
-------	-------	-------



UCL Advanced Continuous Feed Rope Winch w/ 2 Speed Removable Crank Handle: The **Continuous Feed Rope Winch's** unique design is able to extend or retract a virtually unlimited length of rope. For applications that require confined space entry and retrieval as well as rescue retrieval drop line or those who use rope in rescue or have a deep entry. This winch works on a positive friction linkage mechanism that pulls to rope tight to the drum allowing for smooth operation. UCL must approve the types of ropes for use with this winch, see chart below.

Price	Part #	Description
	13448	Advanced Continuous Feed Rope winch w/ 2 Speed Removable Crank Handle Weight: 31.5 lbs (14kg)

Part#	14602	Price
-------	-------	-------



UCL Advanced Continuous Feed Rope Winch 2 Speed Winch w/ 9:1 Power Drive & 4:1 Removable Handle: The Continuous Feed Rope Winch unique design is able to extend or retract a virtually unlimited length of rope. For applications that require confined space entry and retrieval as well as rescue retrieval drop line or those who use rope in rescue or have a deep entry. This winch works on a positive friction linkage mechanism that pulls to rope tight to the drum allowing for smooth operation. **UCL must approve the types of ropes for use with this winch. See chart below.**

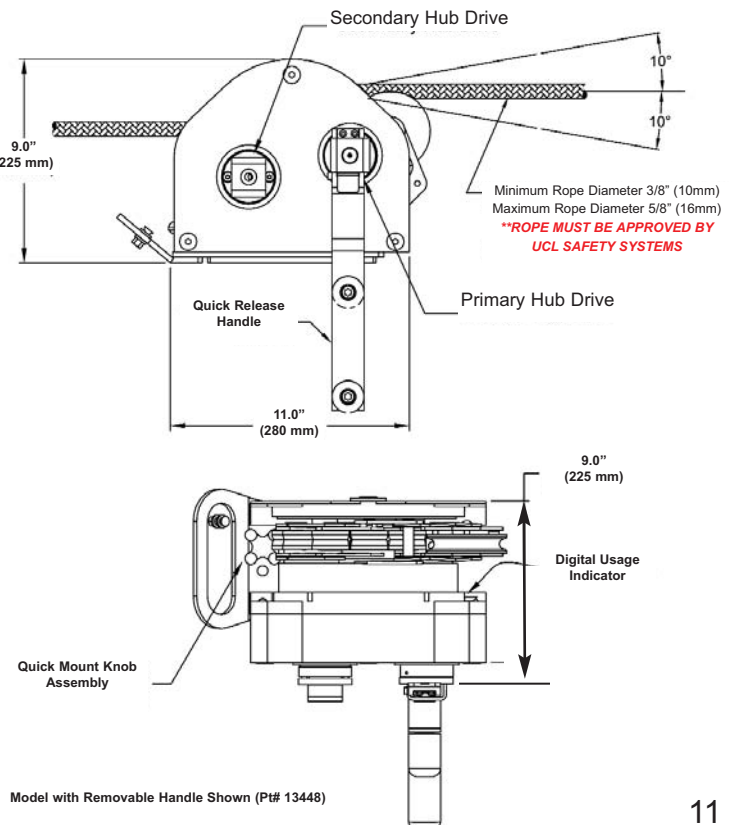
The **Power Drive option** features power drive hub on the 9:1 drive. An overload protection clutch*** installs between this power drive hub and an electric or pneumatic drill** to eliminate overloading the winch during retrieval. This clutch also protects the worker operating the winch and the worker being retrieved from injury. The clutch is installed and removed without the use of tools when switching to the 4:1 manual crank option in emergencies. **** UCL recommends tested drills for use with this winch, please refer to our specification sheet 12935/12936. *** Overload Protection Clutches sold separately, refer to page 16 for details.**

Price	Part #	Description
	14602	Advanced Continuous Feed Rope winch 2 Speed Winch w/ 9:1 Power Drive & 4:1 Removable Handle Weight: 31.5 lbs (14kg)

See instruction manual (pt:# 17211) for information how the rope feeds through the winch. All ropes used with this product must first be approved by UCL. Please call for more information.

UCL Tested & Approved Ropes for Continuous Rope Winch

Manufacturer of Rope	Diameter	Description of Rope
Sterling Ropes	1/2" (13 mm)	Superstatic Nylon (Lot# R34-122602TSK)
Sterling Ropes	1/2" (13 mm)	HTP Static Polyester (Lot# 02-092302TSK)
Rescue Technology	1/2" (13 mm)	1/2" Rigger LE x ft NFPA, S/N 426024, Lot# 10133
Sterling Ropes	3/8" (10 mm)	HTP Static Polyester (Lot#R33-042202TSK)
Sterling Ropes	3/8" (10 mm)	HTP Static Polyester (Lot#R33-022102TSK)
Sterling Ropes	3/8" (10 mm)	Nylon Static (Lot# H3-081602TSK)
Sterling Ropes	5/8" (16 mm)	HTP Static Polyester (Lot#H10-040802TSK)
Sterling Ropes	5/8" (16 mm)	Static Nylon (Lot# H10-071102TSK)
Sterling Ropes	5/8" (16 mm)	HTP Static Polyester (Lot#H10-080502TSK)
Sterling Ropes	7/16" (11 mm)	Superstatic Nylon (Lot# H6-111802TSK)
Sterling Ropes	7/16" (11 mm)	HTP Static Polyester (Lot#03-111802TSK)
Esprit Ropes	1/2" (13 mm)	Supple Jacket (SJ) Nylon Kernmantle



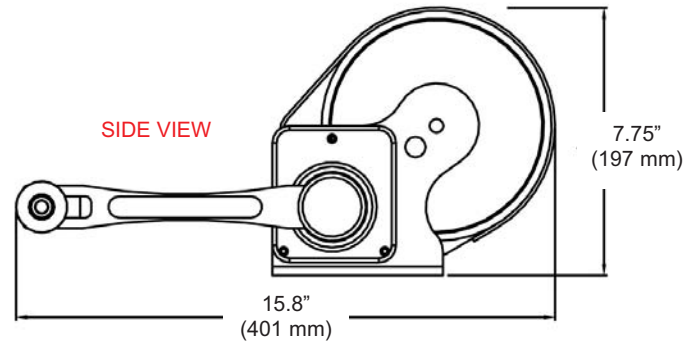
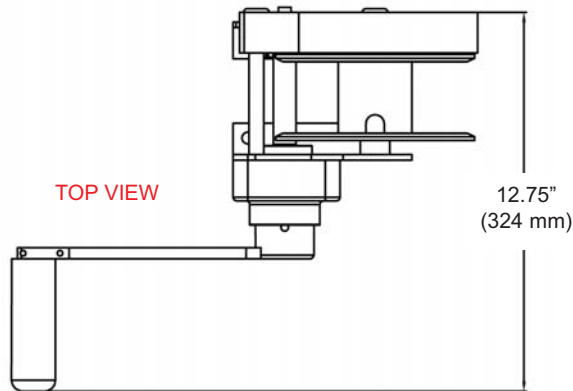
Model with Removable Handle Shown (Pt# 13448)

Basic Winch Packages

The **UCL Basic Series Winch** holds up to 50 ft (15m) of 3/16" (5mm) diameter cable/rope. The Basic Series Winch comes in two different material types: Zinc Plated Steel or Stainless Steel. This winch comes with a Load Limiter Clutch to indicate a fall or misuse and requires annual re-certification from UCL.

This page offers cable/rope assemblies that can be fitted onto the Basic winches and combines the different mounting configurations as well as package part numbers for easy ordering of the winch and cable assembly that best suits your application. **Please remember to order Pt#16824 UCL Mounting Bracket when ordering the Basic Series Winches to use with our UCL Advanced Hoists, Davits, Bases & Accessories, see brochure Pt# 19400.*

Basic Series Winch Operator's Manual Pt#: 16182




Basic Series Zinc Plated Winch w/ Bolt On Plate*: This Basic winch includes a permanently mounted handle to the 5.1:1 hub drive with an average speed of 30 ft/min (9 m/min). The handle is durable, simple to use and features a foldaway crank. **Weight: 17.5 lbs (8.0kg)**

Part#	17570	Price
-------	--------------	-------




Cable/Rope Description	Actual Length	Part #	Working Length	Cable Price	Package Part#	Total Weight	Price
3/16" (5mm) Dia. Galvanized Steel	50' (15 m)	15897	40' (12 m)		18669	22 lbs (10 kg)	
3/16" (5mm) Dia. Stainless Steel	50' (15 m)	16116	40' (12 m)		18670	22 lbs (10 kg)	
3/16" (5mm) Dia. Technora Cord	50' (15 m)	18683	40' (12 m)		18671	20 lbs (9 kg)	

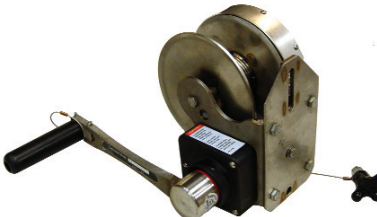
Basic Series Zinc Plated Winch w/ Quick Plate Adapter*: This Basic winch includes a permanently mounted handle to the 5.1:1 hub drive with an average speed of 30 ft/min (9 m/min). The handle is durable, simple to use and features a foldaway crank. This Quick Plate Adapter is for use with Pt# 10222 Quick Mount Bracket*, refer to page 15. **Weight: 18 lbs (8.1kg)**

Part#	Price		Cable/Rope Description	Actual Length	Part #	Working Length	Cable Price		Package Part#	Total Weight	Price
	17429		3/16" (5mm) Dia. Galvanized Steel	50' (15 m)	15897	40' (12 m)			18666	22 lbs (10 kg)	
			3/16" (5mm) Dia. Stainless Steel	50' (15 m)	16116	40' (12 m)			18667	22 lbs (10 kg)	
			3/16" (5mm) Dia. Technora Cord	50' (15 m)	18683	40' (12 m)			18668	20 lbs (9 kg)	

Basic Series Stainless Steel Winch w/ Bolt On Plate*: This Basic winch includes a permanently mounted handle to the 5.1:1 hub drive with an average speed of 30 ft/min (9 m/min). The handle is durable, simple to use and features a foldaway crank. **Weight: 17.5 lbs (8.0kg)**

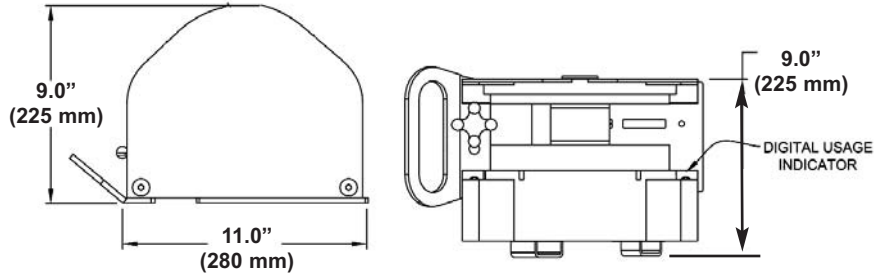
Part#	Price		Cable/Rope Description	Actual Length	Part #	Working Length	Cable Price		Package Part#	Total Weight	Price
	17571		3/16" (5mm) Dia. Stainless Steel	50' (15 m)	16116	40' (12 m)			18674	22 lbs (10 kg)	
			3/16" (5mm) Dia. Technora Cord	50' (15 m)	18683	40' (12 m)			18675	20 lbs (9 kg)	

Basic Series Stainless Steel Winch w/ Quick Plate Adapter*: This Basic winch includes a permanently mounted handle to the 5.1:1 hub drive with an average speed of 30 ft/min (9 m/min). The handle is durable, simple to use and features a foldaway crank. This Quick Plate Adapter is for use with Pt# 10222 Quick Mount Bracket*, refer to page 15. **Weight: 18 lbs (8.1kg)**

Part#	Price		Cable/Rope Description	Actual Length	Part #	Working Length	Cable Price		Package Part#	Total Weight	Price
	17430		3/16" (5mm) Dia. Stainless Steel	50' (15 m)	16116	40' (12 m)			18672	22 lbs (10 kg)	
			3/16" (5mm) Dia. Technora Cord	50' (15 m)	18683	40' (12 m)			18673	20 lbs (9 kg)	

Universal Material Handling Winch

The UCL Universal Material Handling Digital Winch offers a 1000lbs-working load for material handling only at 5:1 safety factor. The winch offers 4:1 / 9:1 drive options with and a 1/4" x 70 foot galvanized cable assembly that comes with a heavy-duty forged material handling hook.



Universal Material Handling Winch w/ Permanent Mounted Handle: The Universal Material Handling Winch includes a permanently mounted handle to the 9:1 hub drive with an average speed of 13ft/min (4m/min). This handle offers durability, a foldaway handle and is simple to use.

Price:	Part #	Description
	18705	Universal Material Handling Winch w/ Permanent Mounted Handle. Comes with 1/4" X 70' galvanized cable assembly (Pt#: 15161). Weight: 32 lbs (14.5kg)



Universal Material Handling Winch w/ Removable Handle: The Universal Material Handling Winch includes a removable aluminum crank handle to utilize both our 9:1 and 4:1 drives. These two drives offer the capability of retrieval/descent at average speeds from 13ft/min (4 m/min) for loads over 50lbs up to 30 ft/min (9 m/min) for loads under 50 lbs.

Price:	Part #	Description
	18706	Universal Material Handling Winch w/ Removable Handle. Comes with 1/4" X 70' galvanized cable assembly (Pt#: 15161). Weight: 32 lbs (14.5kg)



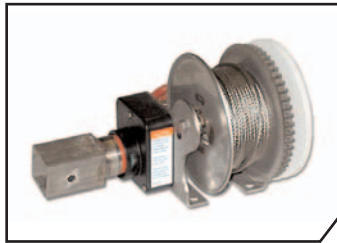
Universal Material Handling Winch w/ 9:1 Power Drive & Removable Handle: The Power Drive Universal Winch features power drive hub on the 9:1 drive for loads up to 450 lbs. An overload protection clutch** installs between this power drive hub and an electric or pneumatic drill* to eliminate overloading the winch during retrieval. This clutch also protects the worker operating the winch from injury. The clutch is installed and removed without the use of tools when switching to the 4:1 manual crank option loads exceeding 450lbs. * UCL recommends tested drills for use with this winch, please refer to our specification sheet 12935/12936. ** Overload Protection Clutches sold separately, refer to page 16 for details.

Price:	Part #	Description
	18707	Universal Material Handling Winch w/ 9:1 Power Drive & Removable Handle. Comes with 1/4" X 70' galvanized cable assembly (Pt#: 15161). Weight: 32 lbs (14.5kg)

Material Handling Winches, Brackets & Adapters



The **UCL Material Handling Basic Winch** offers a 500lbs-working load for material handling at 5:1 safety factor. The winch offers a removable handle with and a 3/16" x 70 foot galvanized cable assembly that comes with a heavy-duty forged material handling hook. Offered in Stainless Steel and Zinc Plated steel, not exactly as shown. Please call for your UCL representative for further details.



Price:	Part #	Description
<input type="text"/>	18708	Zinc-Plated Material Handling Basic Winch c/w 70' galvanized cable assembly
<input type="text"/>	18709	Stainless Steel Material Handling Basic Winch c/w 70' stainless steel cable assembly

UCL Brackets & Adapters



16824

UCL Advanced Series Winch Mount Bracket: Designed to mount directly to the UCL Basic and Digital Winches. **Must be ordered to use with UCL Advanced Hoists, Davits, Bases & Accessories. See brochure #19400 or call for more details.**

Price:	Part #	Description
<input type="text"/>	16824	UCL Advanced Series Winch Mount Bracket
		Weight: 1.6 lbs (0.7 kg)



10222

Quick Mount Bracket for use with UCL Winches: Designed to allow the winch to be removed from the bracket with ease. Please call for more information.

Price:	Part #	Description
<input type="text"/>	10222	Quick Mount Bracket for use with UCL Winches
		Weight: 2.5 lbs (1.1 kg)

Other Manufacturer's Brackets & Adapters

Additional brackets that are manufactured by UCL are required to mount other manufacturers Winch/SRL and are to be purchased separately. See below.



10207

UCL Flat Back Adapter Bracket for use with DBI Style Winch/SRL

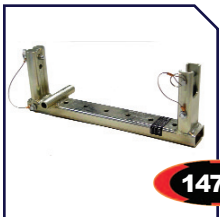
Price:	Part #	Description
<input type="text"/>	10207	UCL Flat Back Adapter Bracket for use with DBI Style Winch/SRL
		Weight: 2 lbs (0.9 kg)



16015

UCL Flat Back Adapter Bracket for use with Miller Style 3-Way SRL

Price:	Part #	Description
<input type="text"/>	16015	UCL Flat Back Adapter Bracket for use with Miller Style 3-Way SRL
		Weight: 1.5 lbs (0.7 kg)



14793

UCL Flat Adapter Bracket for use with Rose/Surety Style SRL: This bracket can be used for Zoll, Rose, Surety and Wahlfeld 50' SRL's. The bracket allows a 50' 3-way unit to secure directly onto it. The 14793 does not require the use of the cast aluminum bracket. Please call for more information.

Price:	Part #	Description
<input type="text"/>	14793	UCL Flat Adapter Bracket for use with Rose/Surety Style SRL
		Weight: 6.5 lbs (3.0 kg)

More manufacturer's brackets & adapters are available. Call your local UCL distributor or our head office for information about additional brackets & adapters.

The Quick Mount and Flat Back brackets listed above must be ordered with Pt#: 16824 to use with our UCL Advanced Hoists, Davits, Bases & Accessories. See UCL brochure Pt#: 19400.

Bags & Accessories



13327



13328



17411



17567

UCL Winch Carrying Bags: Protect and transport your UCL Digital or Basic Series Winches in these heavy-duty padded carrying bags.

Price:	Part #	Description	Weight:
_____	13327	Carrying Bag for use with the UCL Digital 100 Series Winch without brackets.	Weight: 1.5 lbs (0.7 kg)
_____	13328	Carrying Bag for use with the UCL Digital 100 Series Winch with brackets.	Weight: 1.5 lbs (0.7 kg)
_____	17411	Carrying Bag for UCL Basic Series Winches. Comes with heavy-duty dual handles.	Weight: 1.5 lbs (0.7 kg)
_____	17567	Carrying Bag for UCL Digital 200 or 300 Series Winches with or without brackets. Comes with heavy-duty dual handles.	Weight: 3.0 lbs (1.4 kg)

Power Drive Winch Systems



12935

Overload Protection Clutch: This clutch is for use with the UCL Advanced Digital Series Power Drive Winch options. It is available in two working load limits 250 lbs (Pt# 12935) and 450 lbs (Pt# 12936). UCL recommends tested drills for use with these clutches, please refer to specification sheet 12935/12936.

Price:	Part #	Description	Weight:
_____	12935	Overload Protection Clutch, 250 lbs w.l.	Weight: 3.0 lbs (1.4 kg)
_____	12936	Overload Protection Clutch, 450 lbs w.l.	Weight: 3.0 lbs (1.4 kg)

Distributed by:



USA: 1-800-328-6146
 Canada: 1-800-387-7484
 Asia: +852 2992 0381
 Northern Europe: +44 (0) 1928 57 1324
 Europe, Middle East, Africa:
 +33 (0) 497 10 00 10
 Australia, New Zealand: 1800 245 002
 Or visit www.capitalsafety.com



Manufactured by:
Unique Concepts Ltd.

Unit 1 - 1500 King Edward Street
 Winnipeg, Manitoba, Canada
 R3H 0R5
Phone: 204-694-7432
Toll Free: 1-800-455-9673
Fax: 204-694-7612
E-mail: qcm1@mts.net
 Or visit www.uclsafetysystems.com