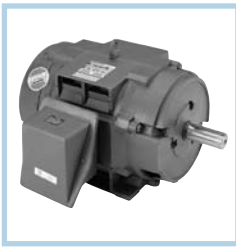


General Purpose, Three Phase Dripproof, NEMA Premium® XRI® Efficiency



Applications: General purpose use on compressors, pumps, conveyors, blowers, and other machinery in environments that are relatively clean and dry. Substantial energy savings can be realized when using these high efficiency motors. Guaranteed efficiencies offer an **eXtra Return** on your **Investment** when using these premium efficiency motors on high cycle or long run time applications.

Features: **Meets or exceeds NEMA Premium® efficiencies, except where noted**
NEMA Premium® models are in compliance with EISA2007

- Motors are suitable for 10:1 VT on all frame sizes and 10:1 CT up to 365T frame (Except where noted)
- 1.15 Service Factor
- Class F Insulation
- Nameplated 60/50 hertz
- UL Recognized and CSA Certified and CE Mark
- Three year warranty



Rigid Base

Suitable for use on VFD per guidelines on page 17.

HP	RPM	VOLTS	FRAME	OVER LOAD	CAT. NO.	MODEL NO.	STOCK	LIST PRICE	MULT. SYMB.	NOM. EFF.	F.L. AMPS	"C" DIM.	FOOT NOTES	C FACE KIT
1	3600	208-230/460	56H	TSTAT	U244	56T34D6001	*	\$380	E2	80.0	2.8-3.4/1.4	10.18	13	A435
	1800	208-230/460	143T	TSTAT	U758	143TTDR6027	*	\$433	E2	85.5	3.2/1.6	12.12		A600
	1200	208-230/460	145T	TSTAT	U265	145TTDR6076	*	\$504	E2	82.5	3.8-4.4/2.2	12.62		A600
1 1/2	3600	208-230/460	143T	TSTAT	U245	143TTDR6028	*	\$423	E2	84.0	4.4-4.0/2.0	12.28		A600
	1800	208-230/460	145T	TSTAT	U759	145TTDR6028	*	\$452	E2	86.5	4.8-5.6/2.4	12.62		A600
	1200	208-230/460	182T	TSTAT	U1266	182TTDW6076	*	\$593	E2	86.5	6.2/3.1	13.19	13	A666
2	3600	208-230/460	145T	TSTAT	U246	145TTDR6039	*	\$499	E2	85.5	5.2-4.8/2.4	13.12		A600
	1800	208-230/460	145T	TSTAT	U760	145TTDR6029	*	\$512	E2	86.5	5.8/2.9	13.62		A600
	1200	208-230/460	184T	TSTAT	U1267	184TTDW6076	*	\$604	E2	87.5	7.2/3.6	15.19	13	A666
3	3600	208-230/460	145T	TSTAT	U247	145TTDR6002	*	\$504	E2	86.5	8.0-7.2/3.6	13.12		A600
	1800	208-230/460	182T	TSTAT	E1930	182TTDW6030	*	\$525	E2	89.5	8.4-8.0/4.0	14.19	13	A666
	1200	208-230/460	213T	TSTAT	U268	213TTDC6076	*	\$829	E2	88.5	10.2-10.0/5.0	16.38		A602
5	3600	208-230/460	182T	TSTAT	U1248	182TTDW6001	*	\$553	E2	86.5	13.0-12.0/6.0	15.19	13	A666
	1800	208-230/460	184T	TSTAT	E1931	184TTDW6031	*	\$590	E2	89.5	13.6-12.8/6.4	15.19	13	A666
	1200	208-230/460	215T	TSTAT	U269	215TTDC6076	*	\$964	E2	90.2	15.8-15.0/7.5	16.38		A602
7 1/2	3600	208-230/460	184T	TSTAT	U1249	184TTDR6001	*	\$800	E2	88.5	19.6-17.6/8.8	16.19	13	A666
	1800	208-230/460	213T	TSTAT	U763	184TTW6001	*	\$764	E2	91.0	20.6-19.8/9.9	16.38		A602
	1200	208-230/460	254T	TSTAT	U254	254TTDC6076	*	\$1,206	E2	92.4	23.4-22.4/11.2	20.94	YD	A622
10	3600	208-230/460	213T	TSTAT	U764	213TTDC6001	*	\$872	E2	91.0	25.0-23.6/11.8	16.38		A602
	1800	208-230/460	215T	TSTAT	U765	215TTDC6026	*	\$902	E2	91.7	28.5-25.6/12.8	17.87		A602
	1200	208-230/460	256T	TSTAT	U255	256TTDC6076	*	\$1,503	E2	91.7	31.0-29.6/14.8	22.60	YD	A622
15	3600	208-230/460	215T	TSTAT	U766	215TTDC6001	*	\$1,278	E2	91.0	38.0-34.6/17.3	17.87	99	A602
	1800	208-230/460	254T	TSTAT	U767	254TTDC6026	*	\$1,249	E2	93.0	40.5-37.0/18.5	20.94	A,YD	A622
	1200	208-230/460	284T	TSTAT	U256	284TTDC6076	*	\$1,979	E2	92.4	42.0-39.5/19.7	23.54	YD	A626

Blue shaded areas are Cast Iron Frames

Continued on next page.

General Purpose, Three Phase Dripproof, NEMA Premium® XRI® Efficiency

THREE PHASE

Rigid Base

HP	RPM	VOLTS	FRAME	OVER LOAD	CAT. NO.	MODEL NO.	STOCK	LIST PRICE	MULT. SYMB.	NOM. EFF.	F.L. AMPS	"C" DIM.	FOOT NOTES	C FACE KIT
20	3600	208-230/460	254T	TSTAT	U768	254TTDC6001	★	\$1,472	E2	93.0	50.0-46.0/23.0	20.94	YD	A622
	1800	208-230/460	256T	TSTAT	U769	256TTDC6026	★	\$1,546	E2	93.0	55.0-51.0/25.5	22.60	YD	A622
	1200	208-230/460	286T	TSTAT	U257	286TTDC6076	★	\$2,411	E2	92.4	58.0-55.0/27.5	25.00	YD	A626
25	3600	208-230/460	256T	TSTAT	U770	256TTDC6001	★	\$1,875	E2	93.0	64.0-57.4/28.7	22.60	YD	A622
	1800	208-230/460	284T	TSTAT	U771	284TTDC6026	★	\$1,824	E2	93.6	66.0-59.6/29.8	23.54	YD	A626
	1200	208-230/460	324T	TSTAT	U798	324TTDC6076	★	\$2,872	E2	93.0	72.0-67.0/33.5	26.02	YD	A627
30	3600	208-230/460	284TS	TSTAT	U772	284TSTDC6001	★	\$2,319	E2	94.1	75.0-67.0/33.5	22.17	YD	A626
	1800	208-230/460	286T	TSTAT	U773	286TTDC6026	★	\$2,105	E2	94.1	78.0-71.0/35.5	25.00	YD	A626
	1200	208-230/460	326T	TSTAT	U799	326TTDC6076	★	\$3,367	E2	93.6	86.3-78.0/39.0	27.52	YD	A627
40	3600	208-230/460	286TS	TSTAT	U774	286TSTDC6001	★	\$2,791	E2	93.6	100-91.2/45.6	23.62	A,YD,99	A626
	1800	208-230/460	324T	TSTAT	U775	324TTDC6026	★	\$2,645	E2	94.1	104-96.0/48.0	26.02	YD	A627
	1200	208-230/460	364T	TSTAT	U1927	364TTDCA6086	★	\$4,321	E2	94.1	107-100/50.0	31.60	YD	A629
50	3600	208-230/460	324TS	TSTAT	U776	324TSTDC6001	★	\$3,403	E2	94.1	123-112/56.0	24.53	YD	A627
	1800	208-230/460	326T	TSTAT	U777	326TTDC6026	★	\$3,152	E2	94.5	129-118/59.0	27.52	YD	A627
	1200	208-230/460	365T	TSTAT	U1928	365TTDCA6086	★	\$4,974	E2	94.1	134-125/62.5	32.80	YD	A629
60	3600	208-230/460	326TS	TSTAT	U778	326TSTDC6001	★	\$4,071	E2	94.1	148-136/68.0	26.02	YD	A627
	1800	208-230/460	364T	TSTAT	U1779	364TTDCA6060	★	\$3,748	E2	95.4	151.5-140/70.0	31.60	YD	A629
	1200	230/460	404T	TSTAT	U270	404TTDS6086	★	\$5,987	E2	95.0	146/73.0	32.50		A222
75	3600	208-230/460	364TS	TSTAT	U1782	364TSTDCA6001	★	\$5,379	E2	93.6	190-170/85.0	29.50	YD	A629
	1800	208-230/460	365T	TSTAT	U1783	365TTDCA6060	★	\$4,489	E2	95.4	189-174/87.0	32.80	YD	A629
	1200	230/460	405T	TSTAT	U271	405TTDS16081	★	\$7,358	E2	95.0	180/90.0	34.00		A222
100	3600	208-230/460	365TS	TSTAT	U1784	365TSTDCA6001	★	\$6,583	E2	94.5	251-224/112	30.60	YD	A629
	1800	230/460	404T	NONE	E922	404TTDS6060	★	\$5,852	E2	95.4	226/113	32.50	YD	A222
	1200	230/460	444T	TSTAT	U272	444TTDS16077	★	\$9,134	E2	95.4	234/117	37.75		A228
125	3600	460	404TS	NONE	U250	404TSTDS6001	★	\$7,875	E2	95.0	140	29.50	YD	A225
	1800	460	405T	NONE	E923	405TTDS6060	★	\$7,408	E2	95.4	141	34.00	YD	A222
	1200	460	445T	TSTAT	U273	445TTDS16076	★	\$11,987	E2	95.0	145	39.75	YD	A228
150	3600	460	405TS	NONE	U251	405TSTDS6007	★	\$9,215	E2	95.0	165	31.00	YD	A225
	1800	460	444T	NONE	E924	444TTDS6060	★	\$9,945	E2	95.8	170	37.75	YD	A228
	1200	460	447T	TSTAT	U274	447TTDN16077	★	\$12,325	E2	95.4	185	43.25		N/A
200	3600	460	444TS	TSTAT	U252	444TSTDS16003	★	\$14,334	E2	95.8	216	34.00	YD	A231
	1800	460	445T	NONE	E925	445TTDS6060	★	\$12,478	E2	95.8	225	39.75	YD	A228
	1200	460	449T	TSTAT	U275	449TTDN16076	★	\$14,715	E2	95.4	245	43.25	YD	N/A
250	3600	460	447TS	NONE	U785	447TSTDN16004	★	\$16,694	E2	95.8	274	39.50	YD	A293
	1800	460	447T	NONE	U786	447TTDN16046	★	\$15,414	E2	96.2	292	43.25	YD	N/A
300	3600	460	447TS	NONE	U788	447TSTDN16007	★	\$19,475	E2	95.4	336	39.50	YD	A293
	1800	460	447T	NONE	U789	447TTDN16041		\$17,456	E2	96.2	340	43.25	YD	N/A
	1200	460	449T	NONE	U790	449TTDN16077		\$23,071	E2	95.8	365		YD	N/A
350	3600	460	447TS	NONE	U791	447TSTDN16008	★	\$21,422	E2	95.4	385	39.50	YD	A293
400	3600	460	449TS	NONE	U793	449TSTDN16003	★	\$24,762	E2	95.8	445	44.50	YD	A293
450	3600	460	449TS	NONE	U795	449TSTDN16004	★	\$31,299	E2	95.8	495	44.50	YD	A293
500	3600	460	449TS	NONE	U797	449TSTDN16005	★	\$34,869	E2	95.8	545	44.50	YD	A293

Blue shaded areas are Cast Iron Frames