

**GROVE GEAR**  
**TorqueLine™**  
**ENGINEERED GROVE TOUGH**

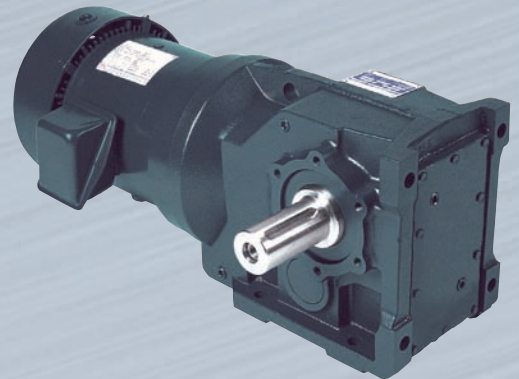


### Helical Inline

- 9 sizes available in gear reducer, GEAR+MOTOR™ and integral gearmotor designs
- Input horsepower ratings up to 125 HP
- Available in double, triple and quadruple reduction with ratios from 2.2:1 to 3700:1
- High efficiency design maximizes system performance
- Foot and flange mounting design available in all sizes
- An Industry leader in power density per unit size
- 3 day standard lead time on sizes through 887 double & triple reduction units

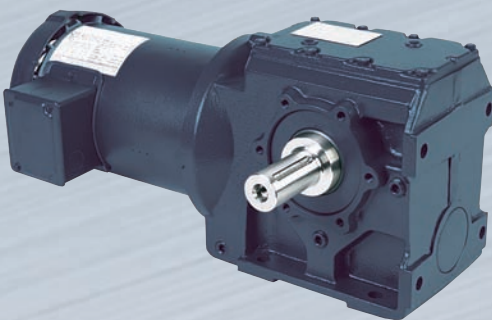
### Helical Bevel

- 6 sizes available in gear reducer, GEAR+MOTOR™ and integral gearmotor designs
- Input horsepower ratings up to 130 HP
- Available in triple and quintuple reduction with ratios from 6.2:1 to 3400:1
- High efficiency design maximizes system performance
- Solid output shaft and hollow output shaft available in all sizes
- Precision carburized and hardened spiral bevel gearing for quiet, efficient, right angle speed reduction
- 5 day standard lead time on all triple reduction units



### Helical Worm

- 4 sizes available in gear reducer, GEAR+MOTOR™ and integral gearmotor designs
- Input horsepower ratings up to 17 HP
- Available in double, triple, and quadruple reduction with ratios from 7:1 to 3400:1
- High efficiency design maximizes system performance
- Solid output shaft and hollow output shaft available in all sizes
- Hardened and ground steel worm shaft and high capacity bronze alloy worm gear give you the advantages of worm gearing with the efficiency of helical gearing
- 5 day standard lead time on sizes through 887 double & triple reduction units



*More Than Just a Motor Company.*

2100 Washington Street • P.O. Box 241 • Grafton, WI 53024

E-MAIL: [sales.grovegear@regalbeloit.com](mailto:sales.grovegear@regalbeloit.com)

[www.grovegear.com](http://www.grovegear.com)

6256G - AMH - 8/08 - 5K - TG  
PRINTED IN U.S.A.





# High Efficiency Gear Reducers

## ENGINEERED GROVE TOUGH

### Housing

Precision machined rugged cast iron housings give you the industrial strength and durability you've come to expect from Grove Gear.

### Bearings

Bearing spans optimized to allow for maximum overhung load capacity, enhanced durability and reliability – while minimizing shaft deflection.

### Shafts

Robust output shaft of high strength steel alloy for superior torque and overhung load capacities.

### Gearing

All gearing is hardened and ground (AGMA Class 10 or better), for enhanced efficiency and noise reduction. Double reduction units are 96-97% efficient.

### Modular Design

Innovative design includes double reduction, triple reduction and quad reduction reducers assembled from standard components.

### Mounting Dimensions

Mounting dimensions are interchangeable with many popular reducers, including SEW, David Brown, Nord and Dodge.

### Motors

Power matched LEESON / Lincoln motors and Grove Gear Ironman (TorqueLine™) reducers provide quiet, efficient, low cost speed reduction.

### Available Options

Washguard™, paint and special shaft options are available.

