

September 2009



WASHDOWN MOTORS

- **TYPES OF WASHDOWN MOTORS**
 - *Painted*
 - *Paint-Free*
 - *Stainless Steel*
- **HORSEPOWER: 1/4 - 10**
- **SINGLE & THREE PHASE**
- **TOTALLY ENCLOSED FAN COOLED
& TOTALLY ENCLOSED NON-VENTILATED**
- **STANDARD, ENERGY & PREMIUM EFFICIENT**
- **RIGID BASE, C-FACE FOOTED,
C-FACE FOOTLESS & YOKE MOUNT**

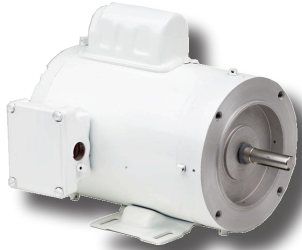
EMERSON[®] washdown duty motors are designed for motor applications that are routinely exposed to washdown, certain chemicals, moisture, humidity or any other severe environment. These motors are designed and tested to meet customer's requirements in the food and beverage industry. The washdown motors provide durability and flexibility to help maximize uptime, which will help reduce overall operating costs.



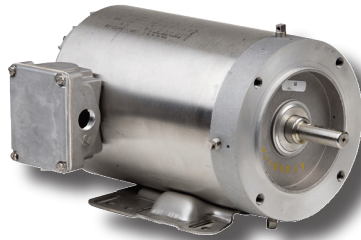
EMERSON. CONSIDER IT SOLVED[®]

Product Overview

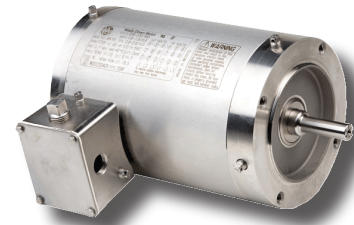
Emerson offers three types of washdown motors that are certified by the BISSC to meet its design requirements.



Painted Washdown Motor



Paint-Free Motor



Stainless Steel Washdown Motor

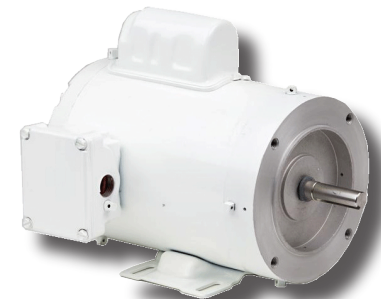
Typical Applications For Washdown Motors

- Natural & processed cheese manufacturing
- Canned & cured seafood plants
- Creamery / buttery manufacturing
- Bottled & canned soft drinks manufacturing
- Poultry & egg processors
- Frozen fruit & vegetable packagers
- Malt & malt beverage manufacturing
- Sugar refineries
- Fluid & dry milk plants
- Food preparation manufacturing
- Meat packing plants

Painted Washdown Motor

The painted washdown motor features USDA approved non-toxic white epoxy paint, which helps provide protection and resistance to chemicals, humidity and severe conditions commonly found in the food industry.

- 1/3 through 10 horsepower
- Three phase, 3600, 1800 or 1200 rpm
- Single phase, 1800 rpm
- V-ring rotating lip seal on shaft end
- 303 stainless steel shaft to resist moisture and corrosion
- Moisture resistant sealer on interior components, stator core end coils, stator bore and rotor core
- Stationary grease seal on both ends
- Gasketed conduit box to help prevent moisture from entering the motor
- Condensation holes to help condensation drain quickly
- Double contact sealed ball bearings
- Double dip & bake windings to help protect from moisture
- Footed, c-face footed and c-face footless



Painted Washdown Motor

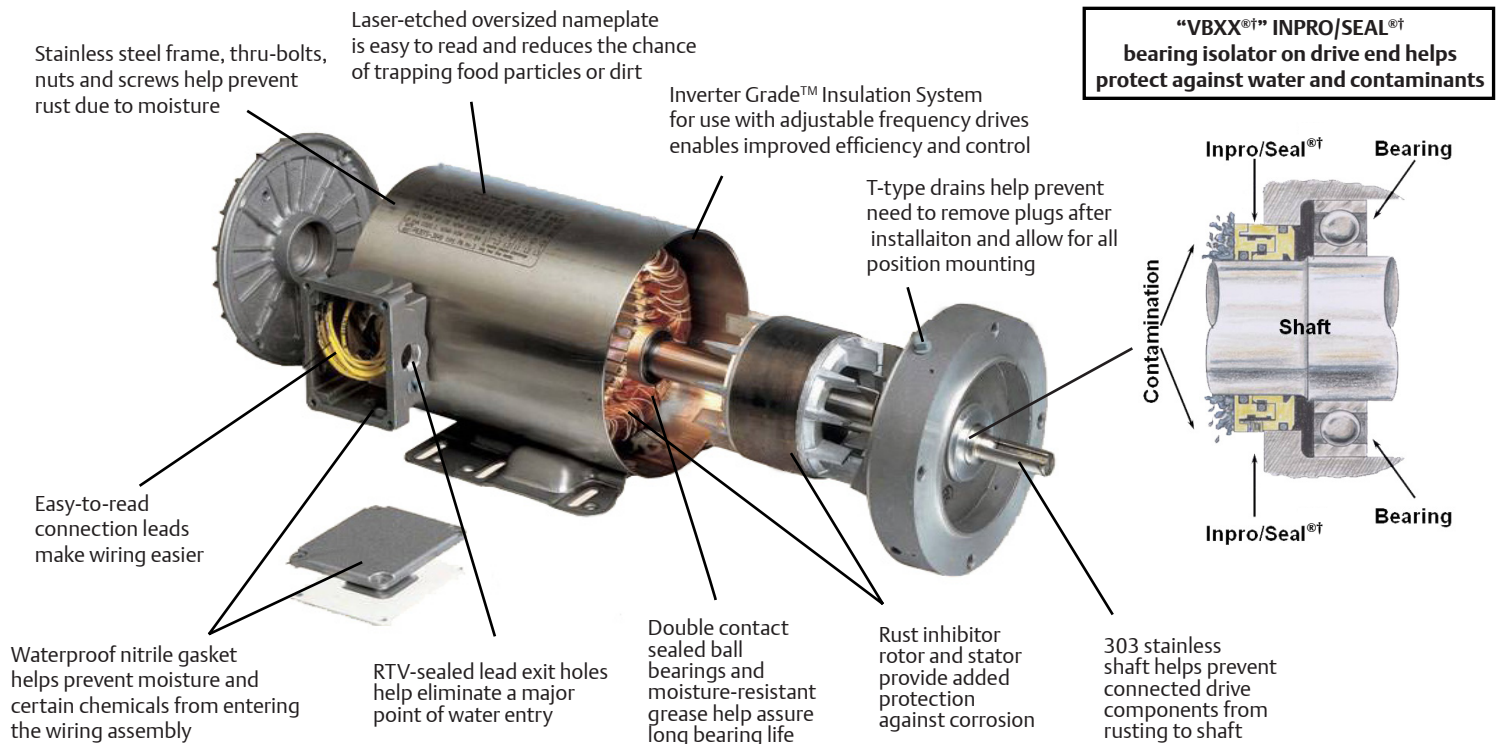


Painted Yoke Mount Motor

Product Overview

Paint-Free Washdown Motor

The paint-free washdown motor is available in three phase, 1/2 to 10 horsepower, TEFC and TENV, 1800 and 1200 RPM, c-face, footed and footless. The motor has significant features, as shown below.



Paint-Free Washdown Motors Pass the Test!

Emerson developed a test chamber to simulate the severe environments such as those found in some food processing facilities. We researched and found aggressive cleaning schedules which are performed every two hours. So, we put our motors to the test!

Every two hours, twenty-four hours a day, we subjected our motors to extreme conditions:

- Sprayed with caustic and acidic chemicals
- 1500 PSI high pressure, hot water
- Low pressure, hot soapy water
- Low pressure rinses

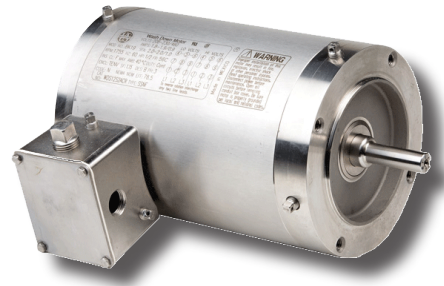
This extensive testing resulted in a superior washdown motor designed for extended life on equipment in food, beverage, or chemical processing plants in which the motor is routinely exposed to high-pressure washdowns, high humidity or certain caustic chemicals.

Product Overview & Warranty Information

Stainless Steel Washdown Motor

The Stainless Steel washdown motor is constructed with all stainless steel components to help prevent rust and corrosion. The laser etched nameplate design provides a smooth finish to help avoid trapped contaminants.

- Horsepower: ½ - 2
- Design: 3 Phase / 1800 rpm
- Totally Enclosed Fan Cooled (TEFC) and Totally Enclosed Non-Vented (TENV)
- 303 stainless steel shaft
- Multiple stainless steel T-type drains
- Double contact sealed ball bearings
- Nitrile gasket on conduit box to help keep water away from the internal components of the motor
- RTV-sealed lead exit
- VBXX^{®†} bearing isolators by Inpro/Seal^{®†}
- Inverter Grade[™] insulation system (meets NEMA^{®†} MG-1 part 31)



Emerson trademarks followed by the ® symbol are registered with the U.S. Patent and Trademark Office.
 †All non-Emerson Electric Co. marks shown within this document are properties of their respective owners.

Emerson (NYSE:EMR), based in St. Louis, Missouri (USA), is a global leader in bringing technology and engineering together to provide innovative solutions to customers through its network power, process management, industrial automation, climate technologies, and appliance and tools businesses. Sales in fiscal 2008 were \$24.8 billion and Emerson is ranked 94th on the Fortune 500 list of America's largest companies. For more information, visit www.Emerson.com.



Emerson Motor Company

8100 West Florissant Ave.

St. Louis, MO 63136

Phone: 888-637-7333

Fax: 314-553-2087

www.emersonmotors.com

www.usmotors.com

