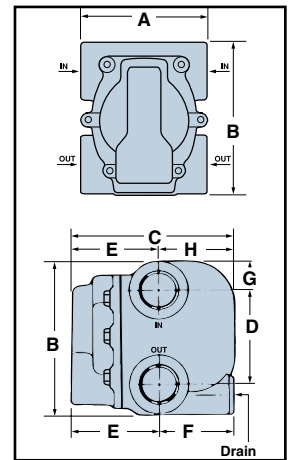
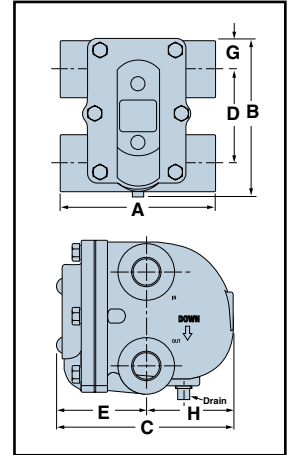


Float and Thermostatic Steam Traps

Series H BEAR TRAP®

- Models ¾" - 2" feature Universal 4 - port tapplings, (2 inlets, 2 outlets) that provide versatility to allow easy piping and system monitoring
- Sizes available:
 - ¾" NPT and BSPT
 - 1" NPT and BSPT
 - 1¼" NPT
 - 1½" NPT
 - 2" NPT
- Stainless steel internal components
- Resistant to water hammer and corrosion
- Below condensate level seat design prevents steam leakage
- Rugged thermostatic element eliminates air binding
- Maximum body design pressure
 - 250 psig (17.3 bar) ¾" - 1¼"
 - 175 psig (12.1 bar) 1½" - 2"
- Maximum operating pressure
 - 175 psig (12.1 bar) ¾" - 2"
- Maximum temperature
 - 406°F (208°C) ¾" - 1¼"
 - 377°F (192°C) 1½" - 2"



Materials of Construction	
Part	Specifications
Body and cover	Cast Iron 30,000 psi tensile
Valve Pin and Seat	Stainless Steel (Hardened)
Float	Stainless Steel
Lever Assembly	Stainless Steel
Thermostatic Air Vent	Stainless Steel Cage and Thermal Element
Cover Bolts	Grade 5

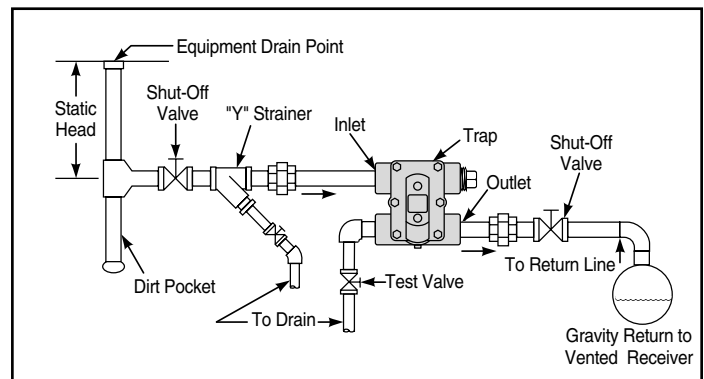
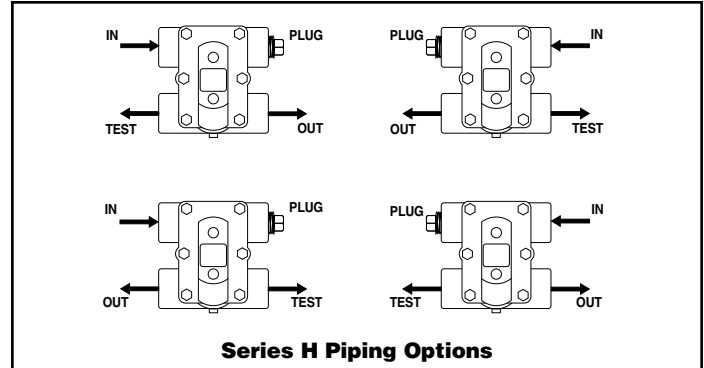
Dimensions in. (mm)

Size in.	A	B	C	D	E	F	G	H
¾	5½ (140)	5 ¹⁹ / ₃₂ (142)	6½ (165)	3 ⁵ / ₁₆ (84)	3 ¹³ / ₃₂ (86)	—	1 ⁵ / ₆₄ (27)	3 ¹ / ₁₆ (78)
1	5½ (140)	5 ¹⁹ / ₃₂ (142)	6½ (165)	3 ⁵ / ₁₆ (84)	3 ¹³ / ₃₂ (86)	—	1 ⁵ / ₆₄ (27)	3 ¹ / ₁₆ (78)
1¼	5½ (140)	5 ¹⁹ / ₃₂ (142)	6½ (165)	3 (76)	3 ¹³ / ₃₂ (86)	—	1 ⁵ / ₆₄ (27)	3 ¹ / ₁₆ (78)
1½	6 ³ / ₈ (162)	7 ¹¹ / ₁₆ (195)	8 ⁷ / ₃₂ (209)	5¼ (133)	4 ¹³ / ₃₂ (112)	3 ¹³ / ₁₆ (97)	1 ¹¹ / ₃₂ (34)	3 ¹³ / ₁₆ (97)
2	6 (152)	11 (279)	9 ⁵ / ₃₂ (233)	7 ¹⁵ / ₃₂ (190)	4 ¹⁷ / ₃₂ (115)	4 ⁷ / ₃₂ (107)	1 ⁵ / ₈ (41)	4 ⁵ / ₈ (117)

Series H additional inlet and outlet features

Models 3/4" - 2"

- Allows positioning options for easy service
- Additional inlet provides a convenient location for vacuum breakers or separate external air vents. Vacuum breakers are required for systems with a modulating temperature regulating valve. External air vents are required when the trap discharges into a wet return line.
- Additional outlet provides a convenient location for a test valve, which eliminates the need for a costly trap test chamber and electronic monitors.



Ordering Information

To convert previously manufactured Hoffman Specialty F & T Trap Model numbers, see page 17.

NPT Model Number	BSPT Model Number	Size in.	NPT Part Number	BSPT Part Number	Seat Differential Pressure Rating psi (bar)	Body Design Pressure Rating psi (bar)	Weight lbs. (kg)
FT015H-3	FT015H-3J	3/4	404200	404201	15 (1)	250 (17.3)	11.7 (5.3)
FT015H-4	FT015H-4J	1	404210	404211	15 (1)	250 (17.3)	11.7 (5.3)
FT015H-5	FT015H-5J	1 1/4	404220	404221	15 (1)	250 (17.3)	11.7 (5.3)
FT015H-6	FT015H-6J	1 1/2	401626	404627	15 (1)	175 (12.1)	22 (10)
FT015H-8	FT015H-8J	2	401629	404630	15 (1)	175 (12.1)	38 (17)
FT030H-3	FT030H-3J	3/4	404202	404203	30 (2.1)	250 (17.3)	11.7 (5.3)
FT030H-4	FT030H-4J	1	404212	404213	30 (2.1)	250 (17.3)	11.7 (5.3)
FT030H-5	FT030H-5J	1 1/4	404222	404223	30 (2.1)	250 (17.3)	11.7 (5.3)
FT030H-6	FT030H-6J	1 1/2	401638	401639	30 (2.1)	175 (12.1)	22 (10)
FT075H-3	FT075H-3J	3/4	404204	404205	75 (5.2)	250 (17.3)	11.7 (5.3)
FT075H-4	FT075H-4J	1	404214	404215	75 (5.2)	250 (17.3)	11.7 (5.3)
FT125H-3	FT125H-3J	3/4	404206	404207	125 (12.1)	250 (17.3)	11.7 (5.3)
FT125H-4	FT125H-4J	1	404216	404217	125 (12.1)	250 (17.3)	11.7 (5.3)
FT175H-3	FT175H-3J	3/4	404208	404209	175 (12.1)	250 (17.3)	11.7 (5.3)
FT175H-4	FT175H-4J	1	404218	404219	175 (12.1)	250 (17.3)	11.7 (5.3)

Float and Thermostatic Steam Traps (continued)

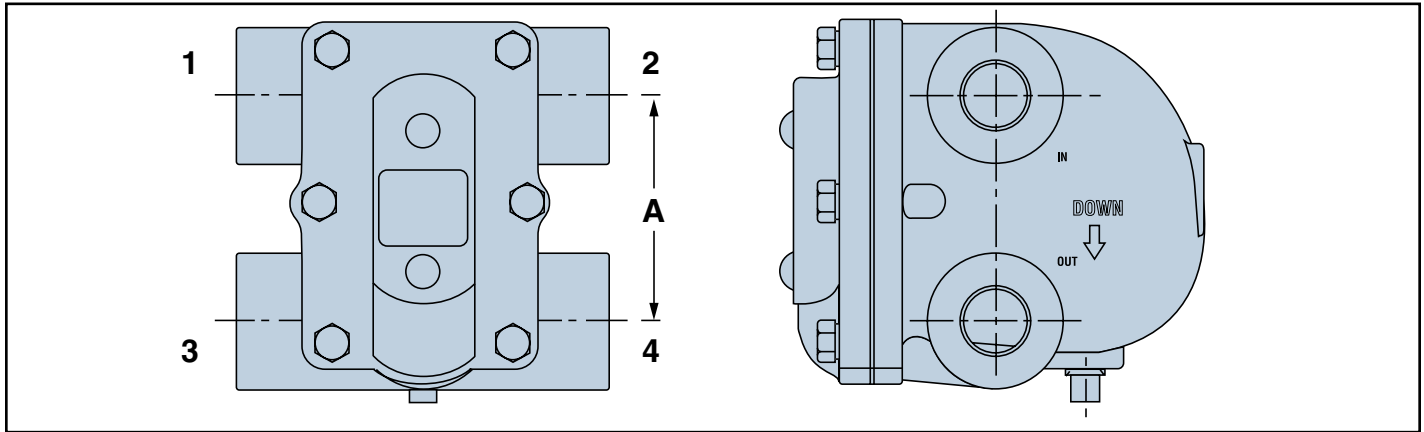
Series H BEAR TRAP® (continued)

- Determine the differential pressure across the trap (inlet pressure - outlet pressure). On applications where the steam is controlled by a modulating temperature regulator, the trap differential should be 1/2 psi (0.34 bar).
- Determine the capacity based on the differential pressure and the required capacity of the trap to open against the maximum inlet steam pressure.
- Apply a Safety Factor by multiplying required capacity by 1.5.

Capacities (Gross Ratings)

Model	Size in.	Orifice Size in. (mm)	Pressure Differential in Pounds Per Square Inch (bar)																	
			1/4 (0.017)	1/2 (0.035)	1 (0.07)	2 (0.14)	5 (0.35)	10 (0.69)	15 (1.0)	20 (1.4)	25 (1.69)	30 (2.1)	40 (2.8)	50 (3.5)	60 (4.2)	75 (5.2)	100 (6.9)	125 (8.6)	150 (10.4)	175 (12.1)
			Capacities in Pounds of Condensate Per Hour (kg/hr.)																	
FT015H-3	3/4	.253 (6.4)	390 (177)	500 (227)	680 (308)	910 (413)	1100 (500)	1450 (658)	1600 (725)											
FT015H-4	1	.253 (6.4)	390 (177)	500 (227)	680 (308)	910 (413)	1100 (500)	1450 (658)	1600 (725)											
FT015H-5	1 1/4	.312 (8)	600 (272)	770 (350)	980 (444)	1240 (562)	1640 (744)	2000 (907)	2340 (1062)											
FT015H-6	1 1/2	.500 (13)	1280 (581)	1700 (771)	2050 (930)	2550 (1157)	3500 (1588)	4400 (1996)	5300 (2404)											
FT015H-8	2	.687 (17)	2500 (1134)	3150 (1429)	4000 (1814)	5000 (2268)	6800 (3084)	8300 (3765)	9800 (4405)											
FT030H-3	3/4	.235 (6)	380 (172)	470 (214)	630 (285)	870 (395)	1050 (475)	1380 (625)	1530 (695)	1700 (770)	1820 (825)	1900 (860)								
FT030H-4	1	.235 (6)	380 (172)	470 (214)	630 (285)	870 (395)	1050 (475)	1380 (625)	1530 (695)	1700 (770)	1820 (825)	1900 (860)								
FT030H-5	1 1/4	.253 (6.4)	420 (190)	550 (250)	740 (335)	1000 (450)	1200 (545)	1550 (700)	1760 (800)	1850 (840)	2000 (907)	2200 (1000)								
FT030H-6	1 1/2	.438 (11)	580 (263)	800 (362)	1200 (544)	1680 (762)	2600 (1179)	3500 (1387)	4500 (2041)	5200 (2358)	5700 (2585)	6100 (2766)								
FT075H-3	3/4	.166 (4.2)	160 (72)	210 (95)	280 (125)	360 (165)	520 (235)	700 (320)	800 (360)	870 (395)	930 (420)	970 (440)	1120 (510)	1230 (560)	1300 (590)	1450 (658)				
FT075H-4	1	.166 (4.2)	160 (72)	210 (95)	280 (125)	360 (165)	520 (235)	700 (320)	800 (360)	870 (395)	930 (420)	970 (440)	1120 (510)	1230 (560)	1300 (590)	1450 (658)				
FT125H-3	3/4	.125 (3.2)	100 (45)	130 (60)	170 (77)	230 (104)	330 (150)	410 (186)	500 (225)	560 (255)	620 (280)	660 (300)	750 (340)	830 (375)	890 (400)	970 (440)	1100 (500)	1190 (540)		
FT125H-4	1	.125 (3.2)	100 (45)	130 (60)	170 (77)	230 (104)	330 (150)	410 (186)	500 (225)	560 (255)	620 (280)	660 (300)	750 (340)	830 (375)	890 (400)	970 (440)	1100 (500)	1190 (540)		
FT175H-3	3/4	.106 (2.7)	70 (32)	80 (36)	110 (50)	140 (63)	220 (100)	280 (127)	340 (155)	380 (172)	400 (180)	420 (190)	460 (210)	480 (220)	520 (235)	580 (263)	690 (315)	850 (385)	960 (435)	1000 (454)
FT175H-4	1	.106 (2.7)	70 (32)	80 (36)	110 (50)	140 (63)	220 (100)	280 (127)	340 (155)	380 (172)	400 (180)	420 (190)	460 (210)	480 (220)	520 (235)	580 (263)	690 (315)	850 (385)	960 (435)	1000 (454)

Series H Competitive Dimensional Comparison of Distance Between Inlet and Outlet Pipes



Dimensions in. (mm)

Size	Manufacturer	Port Tappings				A
		1	2	3	4	in. (mm)
3/4" and 1"	Hoffman FT015H-3 / FT015H-4	Yes	Yes	Yes	Yes	3 ⁵ / ₁₆ (83)
	Hoffman 55	Yes	Yes	Yes	Yes	3 ¹ / ₈ (78)
	Spirax FT015	No	Yes	No	Yes	3 ⁵ / ₁₆ (83)
	Armstrong 15-B3 & 15-B4	Yes	Yes	No	Yes	3 (76)
	Mepco/Dunham Bush 40-215 & 40-415	No	Yes	No	Yes	3 ³ / ₈ (86)
	Mepco/Dunham Bush 40-215 & 40-415	Yes	Yes	Yes	Yes	3 ³ / ₈ (86)

Size	Manufacturer	Port Tappings				A
		1	2	3	4	in. (mm)
1 ¹ / ₄ "	Hoffman FT015H-5	Yes	Yes	Yes	Yes	3 (76)
	Hoffman 55	Yes	Yes	Yes	Yes	4 ¹ / ₈ (104)
	Spirax FT015	No	Yes	No	Yes	3 (76)
	Armstrong 15-B5	Yes	Yes	No	Yes	3 (76)
	Mepco/Dunham Bush 40-515	No	Yes	No	Yes	3 (76)
	Mepco/Dunham Bush 44-515	Yes	Yes	Yes	Yes	3 (76)

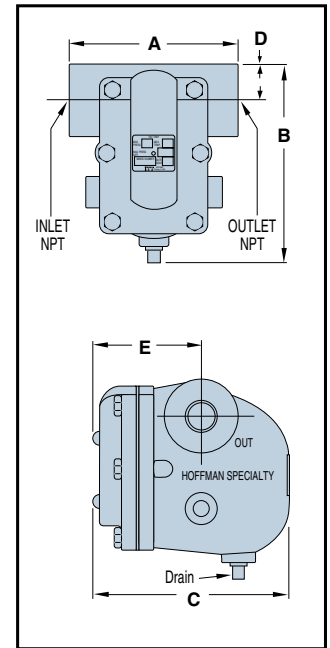
Size	Manufacturer	Port Tappings				A
		1	2	3	4	in. (mm)
1 ¹ / ₂ "	Hoffman FT015H-6	Yes	Yes	Yes	Yes	5 ¹ / ₄ (133)
	Hoffman 55	Yes	Yes	Yes	Yes	5 ¹ / ₄ (133)
	Armstrong 15-B6	Yes	Yes	No	Yes	4 ³ / ₁₆ (106)
	Mepco/Dunham Bush 40-715	No	Yes	No	Yes	3 (76)
	Mepco/Dunham Bush 44-715	Yes	Yes	Yes	Yes	3 (76)

Size	Manufacturer	Port Tappings				A
		1	2	3	4	in. (mm)
2"	Hoffman FT015H-8	Yes	Yes	Yes	Yes	7 ¹⁵ / ₃₂ (190)
	Hoffman 55	Yes	Yes	Yes	Yes	7 ¹⁵ / ₃₂ (190)
	Armstrong 15-B8	Yes	Yes	No	Yes	6 (152)

Float and Thermostatic Steam Traps (continued)

Series I In-line **BEAR TRAP**[®]

- In-line piping design provides complete drainage while minimizing vertical height change
- Ideal for overhead applications
- For commercial and industrial applications such as air make-up coils, cooking kettles and unit heaters
- Sizes available:
 - ¾" NPT and BSPT
 - 1" NPT and BSPT
 - 1¼" NPT and BSPT
- Below condensate level seat design prevents steam leakage
- Stainless steel internal components
- Rugged thermostatic element eliminates air binding
- Resistant to water hammer and corrosion
- Maximum design pressure 250 psig (17.3 bar)
- Maximum operating pressure 175 psig (12.1 bar)
- Maximum temperature 406°F (208°C)



Materials of Construction	
Part	Specifications
Body and cover	Cast Iron 30,000 psi tensile
Valve Pin and Seat	Stainless Steel (Hardened)
Float	Stainless Steel
Lever Assembly	Stainless Steel
Thermostatic Air Vent	Stainless Steel Cage and Thermal Element
Cover Bolts	Grade 5

Dimensions in. (mm)

Size in.	A	B	C	D	E
¾					
1	5½ (140)	6 ⁹ / ₁₆ (167)	6 ⁵ / ₈ (168)	1 ³ / ₁₆ (30)	3½ (89)
1¼					

Series I In-line BEAR TRAP® (continued)

- Determine the differential pressure across the trap (inlet pressure - outlet pressure). On applications where the steam is controlled by a modulating temperature regulator, the trap differential should be 1/2 psi (0.34 bar).
- Determine the capacity based on the differential pressure and the required capacity of the trap to open against the maximum inlet steam pressure.
- Apply a Safety Factor by multiplying required capacity by 1.5.

Capacities (Gross Ratings)

Model	Size in.	Orifice Size in. (mm)	Pressure Differential in Pounds Per Square Inch (bar)																	
			1/4 (0.017)	1/2 (0.035)	1 (0.07)	2 (0.14)	5 (0.35)	10 (0.69)	15 (1.0)	20 (1.4)	25 (1.69)	30 (2.1)	40 (2.8)	50 (3.5)	60 (4.2)	75 (5.2)	100 (6.9)	125 (8.6)	150 (10.4)	175 (12.1)
			Capacities in Pounds of Condensate Per Hour (kg/hr.)																	
FT015I-3 FT015I-4	3/4, 1	.253 (6.4)	390 (177)	500 (227)	680 (308)	910 (413)	1100 (500)	1450 (658)	1600 (725)											
FT015I-5	1 1/4	.312 (8)	600 (272)	770 (350)	980 (444)	1240 (562)	1640 (744)	2000 (907)	2340 (1062)											
FT030I-3 FT030I-4	3/4, 1	.235 (6)	380 (172)	470 (214)	630 (285)	870 (395)	1050 (475)	1380 (625)	1530 (695)	1700 (770)	1820 (825)	1900 (860)								
FT030I-5	1 1/4	.253 (6.4)	420 (190)	550 (250)	740 (335)	1000 (450)	1200 (545)	1550 (700)	1760 (800)	1850 (840)	2000 (907)	2200 (1000)								
FT075I-3 FT075I-4	3/4, 1	.166 (4.2)	160 (72)	210 (95)	280 (125)	360 (165)	520 (235)	700 (320)	800 (360)	870 (395)	930 (420)	970 (440)	1120 (510)	1230 (560)	1300 (590)	1450 (658)				
FT075I-5	1 1/4	.166 (4.2)	160 (72)	210 (95)	280 (125)	360 (165)	520 (235)	700 (320)	800 (360)	870 (395)	930 (420)	970 (440)	1120 (510)	1230 (560)	1300 (590)	1450 (658)				
FT125I-3 FT125I-4	3/4, 1	.125 (3.2)	100 (45)	130 (60)	170 (77)	230 (104)	330 (150)	410 (186)	500 (225)	560 (255)	620 (280)	660 (300)	750 (340)	830 (375)	890 (400)	970 (440)	1100 (500)	1190 (540)		
FT125I-5	1 1/4	.125 (3.2)	100 (45)	130 (60)	170 (77)	230 (104)	330 (150)	410 (186)	500 (225)	560 (255)	620 (280)	660 (300)	750 (340)	830 (375)	890 (400)	970 (440)	1100 (500)	1190 (540)		
FT175I-3 FT175I-4	3/4, 1	.106 (2.7)	70 (32)	80 (36)	110 (50)	140 (63)	220 (100)	280 (127)	340 (155)	380 (172)	400 (180)	420 (190)	460 (210)	480 (220)	520 (235)	580 (263)	690 (315)	850 (385)	960 (435)	1000 (454)
FT175I-5	1 1/4	.106 (2.7)	70 (32)	80 (36)	110 (50)	140 (63)	220 (100)	280 (127)	340 (155)	380 (172)	400 (180)	420 (190)	460 (210)	480 (220)	520 (235)	580 (263)	690 (315)	850 (385)	960 (435)	1000 (454)

Ordering Information

NPT Model Number	BSPT Model Number	Size in.	NPT Part Number	BSPT Part Number	Seat Differential Pressure Rating psi (bar)	Body Design Pressure Rating psi (bar)	Weight lbs. (kg)
FT015I-3	FT015I-3J	3/4	404270	404285	15 (1.0)	250 (17.3)	11.7 (5.3)
FT015I-4	FT015I-4J	1	404271	404286	15 (1.0)	250 (17.3)	11.7 (5.3)
FT015I-5	FT015I-5J	1 1/4	404272	404287	15 (1.0)	250 (17.3)	11.7 (5.3)
FT030I-3	FT030I-3J	3/4	404273	404288	30 (2.1)	250 (17.3)	11.7 (5.3)
FT030I-4	FT030I-4J	1	404274	404289	30 (2.1)	250 (17.3)	11.7 (5.3)
FT030I-5	FT030I-5J	1 1/4	404275	404290	30 (2.1)	250 (17.3)	11.7 (5.3)
FT075I-3	FT075I-3J	3/4	404276	404291	75 (5.2)	250 (17.3)	11.7 (5.3)
FT075I-4	FT075I-4J	1	404277	404292	75 (5.2)	250 (17.3)	11.7 (5.3)
FT075I-5	FT075I-5J	1 1/4	404278	404293	75 (5.2)	250 (17.3)	11.7 (5.3)
FT125I-3	FT125I-3J	3/4	404279	404294	125 (8.6)	250 (17.3)	11.7 (5.3)
FT125I-4	FT125I-4J	1	404280	404295	125 (8.6)	250 (17.3)	11.7 (5.3)
FT125I-5	FT125I-5J	1 1/4	404281	404296	125 (8.6)	250 (17.3)	11.7 (5.3)
FT175I-3	FT175I-3J	3/4	404282	404297	175 (12.1)	250 (17.3)	11.7 (5.3)
FT175I-4	FT175I-4J	1	404283	404298	175 (12.1)	250 (17.3)	11.7 (5.3)
FT175I-5	FT175I-5J	1 1/4	404284	404299	175 (12.1)	250 (17.3)	11.7 (5.3)

Float and Thermostatic Steam Traps (continued)

Series C and X BEAR TRAP®

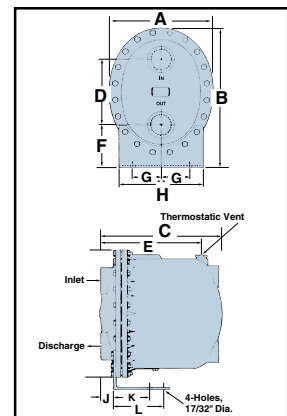
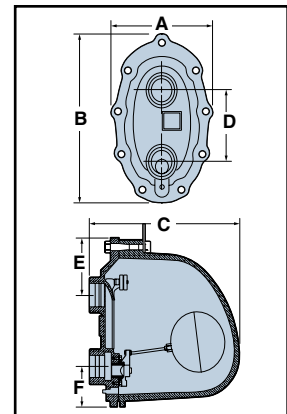
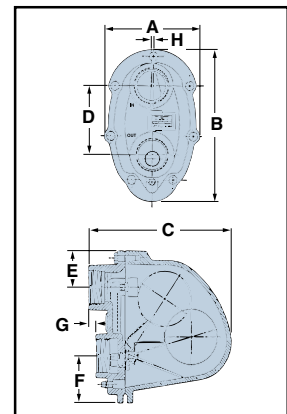
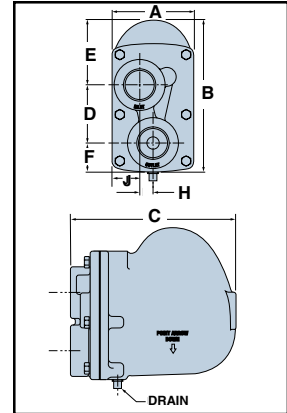
- For large high capacity units
- Sizes available:
 - Series C:**
 - 1 1/4" NPT and BSPT
 - 1 1/2" NPT and BSPT
 - 2" NPT and BSPT
 - 2 1/2" NPT
 - Series X:**
 - 2" NPT
- Resistant to water hammer and corrosion
- Below condensate level seat design prevents steam leakage
- Rugged stainless steel thermostatic element eliminates air binding
- Stainless steel internal components
- Can be serviced without dismantling piping
- Maximum operating pressure 175 psig (12.1 bar)
- Maximum temperature 377°F (192°C)

Materials of Construction	
Part	Specifications
Body and cover	Cast Iron 30,000 psi tensile
Valve Pin and Seat	Stainless Steel (Hardened)
Float	Stainless Steel
Lever Assembly	Stainless Steel
Thermostatic Air Vent	Stainless Steel Cage and Thermal Element
Cover Bolts	Grade 5
Baffle	Stainless Steel {2 1/2" units only}

Dimensions in. (mm)

Size in.	A	B	C	D	E
1 1/4	4 1/4 (108)	8 5/16 (211)	8 9/16 (217)	3 (76)	3 3/8 (86)
1 1/2	4 1/4 (108)	8 5/16 (211)	8 9/16 (217)	3 (76)	3 3/8 (86)
2-Std.	7 3/16 (183)	10 1/8 (257)	10 1/2 (267)	4 15/16 (379)	2 11/16 (68)
2-X	10 (254)	15 (381)	15 1/2 (394)	6 5/8 (168)	4 3/4 (121)
2 1/2	14 1/2 (368)	20 1/4 (514)	17 3/8 (441)	9 1/2 (241)	14 15/16 (379)

Size in.	F	G	H	J	K	L
1 1/4	2 (51)	—	45/64 (17.8)	1 3/8 (35)	—	—
1 1/2	2 (51)	—	45/64 (17.8)	1 3/8 (35)	—	—
2-Std.	3 1/4 (83)	1/2 (12.7)	1/8 (3.2)	—	—	—
2-X	3 1/2 (89)	—	—	—	—	—
2 1/2	6 1/4 (159)	5 (127)	12 (305)	1 5/8 (41)	4 1/2 (114)	7 (178)



Ordering Information

To convert previously manufactured Hoffman Specialty F & T Trap Model numbers, see page 17.

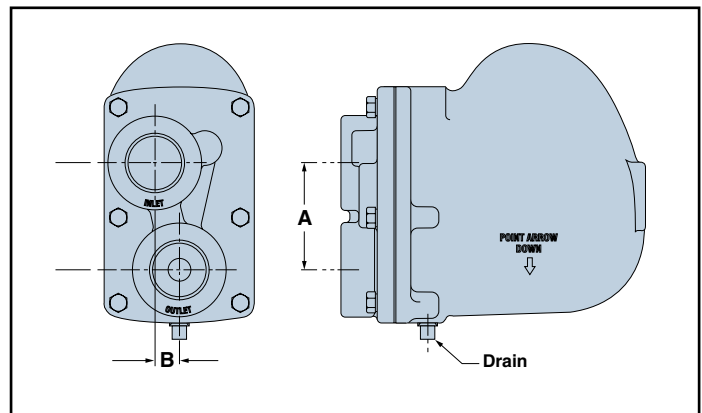
NPT Model Number*	BSPT Model Number	Pressure Size in.	NPT Part Number	BST Part Number	Seat Differential Pressure psi (bar)	Body Design Pressure Rating psi (bar)	Weight lbs. (kg)
FT015C-6	FT015C-6J	1½	404230	404231	15 (1.0)	175 (12.1)	18 (8)
FT015C-8	FT015C-8J	2	404240	404241	15 (1.0)	175 (12.1)	33 (15)
FT015X-5	FT015X-5J	2	404242	404243	15 (1.0)	175 (12.1)	108 (49)
FT015C-10	FT015C-10J	2½	404244	404245	15 (1.0)	175 (12.1)	175 (79)
FT030C-6	FT030C-6J	1½	404232	404233	30 (2.1)	175 (12.1)	18 (8)
FT030C-8	FT030C-8J	2	401887	401888	30 (2.1)	175 (12.1)	33 (15)
FT030X-8	FT030X-8J	2	401899	401910	30 (2.1)	175 (12.1)	108 (49)
FT030C-10	FT030C-10J	2½	401875	401921	30 (2.1)	175 (12.1)	175 (79)
FT075C-5	FT075C-5J	1¼	404244	404225	75 (5.2)	175 (12.1)	18 (8)
FT075C-6	FT075C-6J	1½	404234	404235	75 (5.2)	175 (12.1)	18 (8)
FT075C-8	FT075C-8J	2	401890	401891	75 (5.2)	175 (12.1)	33 (15)
FT075X-8	FT075X-8J	2	401902	401912	75 (5.2)	175 (12.1)	108 (49)
FT075C-10	FT075C-10J	2½	401875	401913	75 (5.2)	175 (12.1)	175 (79)
FT125C-5	FT125C-5J	1¼	404226	404227	125 (12.1)	175 (12.1)	18 (8)
FT125C-6	FT125C-6J	1½	404236	404237	125 (12.1)	175 (12.1)	18 (8)
FT125C-8	FT125C-8J	2	401893	401894	125 (12.1)	175 (12.1)	33 (15)
FT125X-8	FT125X-8J	2	401905	401922	125 (12.1)	175 (12.1)	108 (49)
FT125C-10	FT125C-10J	2½	401881	401924	125 (12.1)	175 (12.2)	175 (79)
FT175C-5	FT175C-5J	1¼	404228	401915	175 (12.1)	175 (12.1)	18 (8)
FT175C-6	FT175C-6J	1½	404238	401916	175 (12.1)	175 (12.1)	18 (8)
FT175C-8	FT175C-8J	2	401896	401925	175 (12.1)	175 (12.1)	33 (15)
FT175X-8	FT175X-8J	2	401907	401918	175 (12.1)	175 (12.1)	105 (49)
FT175C-10	FT175C-10J	2½	401884	401919	175 (12.1)	175 (12.1)	175 (79)

Note: "J" suffix at end of Model Number indicates BSPT threads, i.e. FT075C-8J

Series C and X Competitive Dimensional Comparison of Distance Between Inlet and Outlet Pipes of Traps with Tappings in the Cover

Dimensions in. (mm)

Size	Manufacturer/Model	A	B
1½"	Hoffman FT015C-6	3 (76)	23/32 (18)
	Spirax FT15	3 (76)	23/32 (18)
2"	Hoffman FT015C-8	4 ¹⁵ / ₁₆ (124)	1/8 (3)
	Mepco/Dunham Bush 30-8A	5 ³ / ₈ (136)	1½ (38)
	Spirax FT15	4 ¹⁵ / ₁₆ (124)	1/8 (38)
2"	Hoffman FT015X-8	6 ⁵ / ₈ (168)	0
	Armstrong 15-J8	6 ⁵ / ₈ (168)	0
	Mepco/Dunham Bush SA30-815	6 ⁷ / ₈ (175)	1 ³ / ₈ (35)
	Spirax FTB-20	4½ (114)	½ (13)
2½"	Hoffman FT015C-10	9½ (241)	0
	Armstrong 30-L10	11 ⁵ / ₁₆ (287)	0
	Mepco/Dunham Bush SA30-930A	5¼ (133)	1½ (38)
	Spirax FTB-125	7¼ (184)	1 ⁷ / ₁₆ (36)



Float and Thermostatic Steam Traps (continued) Capacities (Series C and X)

- Determine the differential pressure across the trap (inlet pressure - outlet pressure). On applications where the steam is controlled by a modulating temperature regulator, the trap differential should be 1/2 psi (0.34 bar).
- Determine the capacity based on the differential pressure and the required capacity of the trap to open against the maximum inlet steam pressure.
- Apply a Safety Factor by multiplying required capacity by 1.5.

Capacities (Gross Ratings)

Model	Size in.	Orifice Size in. (mm)	Pressure Differential in Pounds Per Square Inch (bar)																	
			1/4 (0.017)	1/2 (0.035)	1 (0.07)	2 (0.14)	5 (0.35)	10 (0.69)	15 (1.0)	20 (1.4)	25 (1.69)	30 (2.1)	40 (2.8)	50 (3.5)	60 (4.2)	75 (5.2)	100 (6.9)	125 (8.6)	150 (10.4)	175 (12.1)
			Capacities in Pounds of Condensate Per Hour (kg/hr.)																	
FT015C-6	1 1/2	.5 (12.7)	1100 (500)	1700 (770)	2400 (1090)	3300 (1500)	5000 (2270)	6600 (3000)	7600 (3450)											
FT015C-8	2	.687 (17.4)	2300 (1043)	2800 (1270)	3600 (1630)	4650 (2110)	6900 (3130)	9000 (4080)	10,900 (4948)											
FT015X-8	2	.970 (24.6)	6500 (2950)	8000 (3628)	9500 (4310)	10,800 (4900)	15,500 (7030)	20,900 (9480)	24,000 (10,885)											
FT015C-10	2 1/2	1.875 (47.6)	17,000 (7710)	20,000 (9070)	27,000 (12,250)	36,000 (16,330)	46,000 (20,865)	55,000 (24,950)	60,000 (27,210)											
FT030C-6	1 1/2	.390 (10)	1000 (450)	1300 (590)	1700 (770)	2300 (1040)	3400 (1540)	4600 (2085)	5500 (2495)	6000 (2720)	6600 (2995)	7000 (3178)								
FT030C-8	2	.563 (14)	1700 (771)	2500 (1134)	3100 (1406)	4100 (1859)	5800 (2630)	7650 (3470)	9000 (4082)	10,200 (4626)	11,100 (5034)	12,000 (5443)								
FT030X-8	2	.876 (22)	3400 (1543)	4600 (2088)	6400 (2905)	8400 (3813)	12,500 (5675)	16,900 (7672)	19,000 (8626)	21,500 (9761)	23,500 (10,669)	24,000 (10,896)								
FT030C-10	2 1/2	1.625 (41)	14,000 (6356)	17,000 (7718)	20,900 (9488)	25,500 (11,577)	33,200 (15,072)	40,500 (18,387)	45,500 (20,657)	49,400 (22,427)	52,700 (23,925)	55,600 (25,242)								
FT075C-5	1 1/4	.312 (8)	600 (272)	800 (363)	1040 (470)	1410 (640)	2200 (1000)	3100 (1405)	3800 (1725)	4100 (1860)	4500 (2040)	4700 (2130)	5000 (2270)	5300 (2400)	5500 (2500)	5900 (2675)				
FT075C-6	1 1/2	.312 (8)	600 (272)	800 (363)	1040 (470)	1410 (640)	2200 (1000)	3100 (1405)	3800 (1725)	4100 (1860)	4500 (2040)	4700 (2130)	5000 (2270)	5300 (2400)	5500 (2500)	5900 (2675)				
FT075C-8	2	.390 (10)	1000 (453)	1350 (612)	1700 (771)	2150 (975)	2950 (1338)	3600 (1632)	4300 (1950)	4850 (2199)	5400 (2449)	5800 (2630)	6600 (2993)	7200 (3265)	7850 (3560)	8500 (3855)				
FT075X-8	2	.585 (15)	2550 (1156)	3150 (1428)	4300 (1930)	5450 (2472)	7600 (3447)	10,400 (4717)	11,400 (5171)	12,500 (5670)	13,500 (6123)	14,250 (6463)	15,600 (7076)	17,150 (7779)	18,600 (8436)	20,500 (9298)				
FT075C-10	2 1/2	1.031 (26)	5900 (2676)	7700 (3492)	10,000 (4536)	13,000 (5896)	18,600 (8436)	24,200 (10,977)	28,300 (12,836)	31,600 (14,333)	34,400 (15,603)	36,800 (16,692)	41,100 (18,642)	44,800 (20,321)	48,040 (21,790)	52,300 (23,723)				
FT125C-5	1 1/4	.246 (6.2)	430 (195)	540 (245)	700 (320)	940 (425)	1400 (635)	1800 (820)	2200 (1000)	2350 (1065)	2600 (1180)	2800 (1270)	3150 (1430)	3400 (1540)	3500 (1590)	3850 (1750)	4400 (2000)	4800 (2180)		
FT125C-6	1 1/2	.246 (6.2)	430 (195)	540 (245)	700 (320)	940 (425)	1400 (635)	1800 (820)	2200 (1000)	2350 (1065)	2600 (1180)	2800 (1270)	3150 (1430)	3400 (1540)	3500 (1590)	3850 (1750)	4400 (2000)	4800 (2180)		
FT125C-8	2	.294 (7)	730 (331)	900 (408)	1180 (535)	1450 (657)	2000 (907)	2600 (1179)	3100 (1406)	3550 (1610)	3900 (1769)	4250 (1927)	4850 (2199)	5350 (2426)	5850 (2653)	6450 (2925)	7350 (3333)	8150 (3696)		
FT125X-8	2	.448 (11)	2300 (1043)	2800 (1270)	3450 (1564)	4200 (1905)	5450 (2472)	6600 (2993)	7450 (3379)	8050 (3651)	8600 (3900)	8950 (4059)	10,350 (4694)	11,950 (5420)	13,400 (6078)	15,600 (7076)	18,850 (8550)	21,800 (9888)		
FT125C-10	2 1/2	.797 (20)	4000 (1814)	5300 (2404)	6900 (3129)	9100 (4127)	13,000 (5896)	17,100 (7756)	20,000 (9072)	22,400 (10,160)	24,500 (11,113)	26,300 (11,929)	29,400 (13,335)	32,100 (14,560)	34,650 (15,717)	37,600 (17,055)	42,100 (19,096)	46,000 (20,865)		
FT175C-5	1 1/4	.210 (5.3)	260 (120)	350 (160)	480 (220)	640 (290)	940 (425)	1190 (540)	1450 (660)	1560 (710)	1670 (760)	1750 (790)	1910 (865)	2040 (925)	2100 (950)	2300 (1040)	2500 (1135)	2900 (1315)	3140 (1425)	3240 (1470)
FT175C-6	1 1/2	.210 (5.3)	260 (120)	350 (160)	480 (220)	640 (290)	940 (425)	1190 (540)	1450 (660)	1560 (710)	1670 (760)	1750 (790)	1910 (865)	2040 (925)	2100 (950)	2300 (1040)	2500 (1135)	2900 (1315)	3140 (1425)	3240 (1470)
FT175C-8	2	.244 (6)	520 (235)	660 (299)	820 (371)	1050 (476)	1450 (657)	1850 (839)	2250 (1020)	2600 (1179)	2900 (1315)	3100 (1406)	3600 (1632)	4050 (1837)	4400 (1995)	4800 (2177)	5600 (2540)	6250 (2835)	6800 (3084)	7500 (3402)
FT175X-8	2	.375 (10)	2100 (953)	2600 (1180)	3000 (1362)	3500 (1589)	4400 (1997)	4900 (2224)	5350 (2428)	5800 (2633)	6250 (2837)	6700 (3041)	7600 (3450)	8600 (3904)	9550 (4335)	11,000 (4994)	13,000 (5902)	14,750 (6696)	16,500 (7491)	18,000 (8172)
FT175C-10	2 1/2	.688 (17)	2460 (1116)	3350 (1520)	4600 (2088)	6200 (2814)	9400 (4267)	12,800 (5811)	15,400 (6991)	17,500 (7945)	19,300 (8762)	21,000 (9534)	23,800 (10,805)	26,300 (11,940)	28,060 (12,739)	31,600 (14,346)	35,900 (16,298)	39,700 (18,023)	43,100 (19,567)	46,200 (20,974)

Conversion of Previously Manufactured Hoffman Specialty Models to Current Model Numbers

Previously Manufactured			Current Model		
Model No.	NPT Size in.	Part Number	Model No.	NPT Size in.	Part Number
55	3/4	401617	FT015H-3	3/4	404200
55	1	401620	FT015H-4	1	404210
55	1 1/4	401623	FT015H-5	1 1/4	404220
55	1 1/2	401626	FT015H-6	1 1/2	401626
55	2	401629	FT015H-8	2	401629
None	—	—	FT015C-6	1 1/2	404230
None	—	—	FT015C-8	2	404240
None	—	—	FT015X-8	2	404242
None	—	—	FT015C-10	2 1/2	404244
550	1	401632	FT030H-4	1	404212
550	1 1/4	401635	FT030H-5	1 1/4	404222
550	1 1/2	401638	FT030H-6	1 1/2	401638
550	2	401887	FT030C-8	2	401887
551	1	401641	FT075H-4	1	404214
551	1 1/4	401644	FT075C-5	1 1/4	404224
551	1 1/2	401647	FT075C-6	1 1/2	404234
551	2	401890	FT075C-8	2	401890
552	1	401650	FT125H-4	1	404216
552	1 1/4	401653	FT125C-5	1 1/4	404226
552	1 1/2	401656	FT125C-6	1 1/2	404236
552	2	401893	FT125C-8	2	401893
553	1	401659	FT175H-4	1	404218
553	1 1/4	401662	FT175C-5	1 1/4	404228
553	1 1/2	401665	FT175C-6	1 1/2	404238
553	2	401896	FT175C-8	2	401896
590	3/4	401668	FT030H-3	3/4	404202
590	1	401671	FT030H-4	1	404212
590	1 1/2	401674	FT030C-6	1 1/2	404232
590	2	401899	FT030X-8	2	401899
590	2 1/2	401875	FT030C-10	2 1/2	401875
591	3/4	401677	FT075H-3	3/4	404204
591	1	401680	FT075H-4	1	404214
591	1 1/2	401683	FT075C-6	1 1/2	404234
591	2	401902	FT075X-8	2	401902
591	2 1/2	401878	FT075C-10	2 1/2	401878
592	3/4	401686	FT125H-3	3/4	404206
592	1	401689	FT125H-4	1	404216
592	1 1/2	401692	FT125C-6	1 1/2	404236
592	2	401905	FT125X-8	2	401905
592	2 1/2	401881	FT125C-10	2 1/2	401881
593	3/4	401695	FT175H-3	3/4	404208
593	1	401698	FT175H-4	1	404218
593	1 1/4	401701	FT175C-5	1 1/4	404228
593	2	401907	FT175X-8	2	401907
593	2 1/2	401884	FT175C-10	2 1/2	401884

Current Model number designation code example:

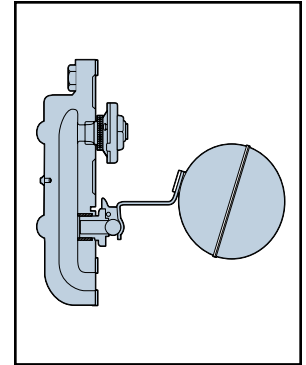
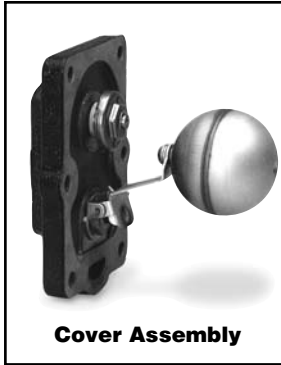
Model	Seat Pressure	Series	Size
FT	015	H	3

There are dimensional differences between some current models as compared to previous models. Please refer to dimensional diagrams for each trap.

Float and Thermostatic Steam Traps (continued)

Cover Assemblies for Spirax Sarco Float & Thermostatic Steam Traps

Spirax Sarco F&T Trap Model Number	Pressure psi (bar)	Size in.	Hoffman Specialty Cover Assembly* Part Number
FT15	15 (1.1)	3/4	604001
		1	604001
		1 1/4	604006
		1 1/2	604011
FT30	30 (2.1)	3/4	604002
		1	604002
		1 1/4	604007
		1 1/2	604012
FT75	75 (5.3)	3/4	604003
		1	604003
		1 1/4	604008
		1 1/2	604013
FT125	125 (8.8)	3/4	604004
		1	604004
		1 1/4	604009
		1 1/2	604014



* Cover assembly includes cover casting, all internal components, and cover gasket.

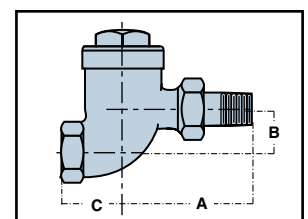
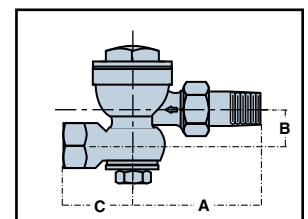
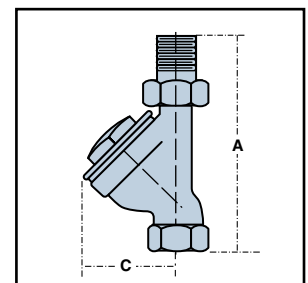
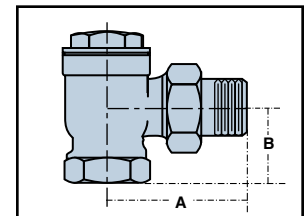
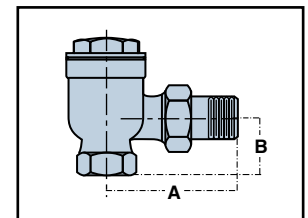
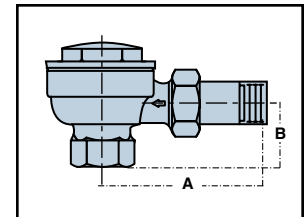
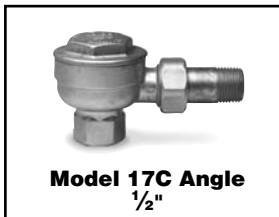
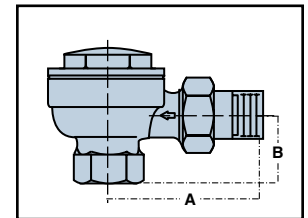
Thermostatic Steam Traps

Series 17C Balanced Pressure BEARTRAP®

The Series 17C Balanced Pressure Thermostatic Steam Traps are for institutional, commercial and residential heating system applications such as schools, hospitals, apartment buildings, homes or others where low or moderate water hammer may occur.

- Subcooling for extremely efficient system operation and elimination of flash steam losses on low pressure systems
- Sizes available:
 - 1/2" NPT and BSPT Angle, Vertical
 - 1/2" NPT Swivel
 - 3/4" NPT and BSPT Angle, Vertical
 - 1" NPT and BSPT Angle
- Replaceable Dura-Stat® module
- 3-Year Warranty
- Meets Mil specification A-A-60001 Type V, Style A, Class 1 and 2
- Stainless steel components
- Resistant to moderate water hammer and chemical attack
- Maximum operating pressure 25 psig (1.7 bar)

For computer aided selection of Thermostatic Steam Traps, please refer to the "Steam Specialty Component Selectors" on the Hoffman Specialty website, www.hoffmanspecialty.com or, for a stand-alone version of ESP-PLUS, contact your local Hoffman Specialty Representative (see back cover for listing).



Series 17C Balanced Pressure 
Dimensions, in. (mm)

Model	Pattern	Size in.	A	B	C
17C-AS-2-25	Angle (w/short Nipple)	1/2	2 ²⁷ / ₃₂ (72)	1 ¹ / ₄ (32)	—
17C-A-2-25	Angle	1/2	3 ¹ / ₄ (83)	1 ¹ / ₄ (32)	—
17C-V-2-25	Vertical	1/2	4 ²³ / ₃₂ (120)	—	2 ¹ / ₈ (54)
17C-SV-2-25	Swivel	1/2	3 ¹ / ₄ (83)	1 ⁵ / ₁₆ (24)	1 ¹³ / ₁₆ (46)
17C-A-3-25	Angle	3/4	3 ¹ / ₈ (79)	1 ¹ / ₂ (38)	—
17C-S-3-25	Straightaway	3/4	3 ⁵ / ₃₂ (80)	1 ¹ / ₈ (29)	1 ⁵ / ₈ (41)
17C-A-4-25	Angle	1	3 ⁷ / ₃₂ (82)	1 ³ / ₄ (45)	—

Gross Ratings

Series 17C	Differential Across Trap psi (bar)								
	1/4 (.017)	1/2 (.034)	1 (.069)	1 1/2 (.10)	2 (.14)	5 (.35)	10 (.7)	15 (1.0)	25 (1.7)
	Capacity lb/hr (kg/hr)								
	42 (19)	51 (23)	63 (29)	72 (33)	77 (35)	102 (46)	125 (57)	140 (64)	162 (73)

Series 17C capacities are based on 40° F (22°C) subcooling. Cold capacity is approximately 4 times capacity shown.

SHEMA

Series 17C	Differential Across Trap psi								
	1/4	1/2	1	1 1/2	2	5	10	15	25
	Capacity sq. ft. EDR*								
	85	120	165	200	235	370	530	640	800

* Ratings are in accordance with recommended standards established by the Steam Heating Equipment Manufacturers association (SHEMA).

1 sq. ft. EDR is equivalent to a heat emission of 240 BTU per hour with 2 psig steam filling a radiator surrounded by 70°F ambient air.

To convert sq. ft. EDR to lbs. of condensate, or steam per hour, divide the sq. ft. rating by 4.

Ordering Information

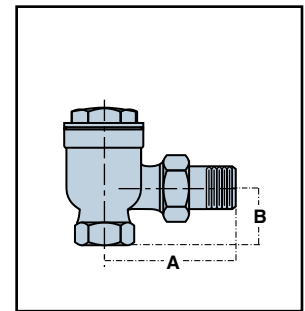
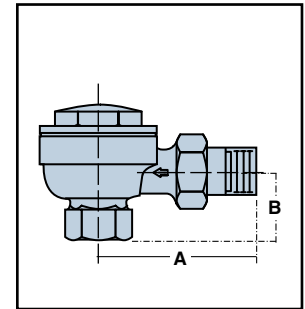
NPT Model Number	BSPT Model Number	Size in.	NPT Part Number	BSPT Part Number	Differential Pressure Rating psi (bar)	Weight lbs. (kg)
17C-AS-2-25 Angle (w/short nipple)		1/2	401542		25 (1.7)	1.2 (.54)
17C-A-2-25 Angle		1/2	401536		25 (1.7)	1.2 (.54)
17C-V-2-25 Vertical		1/2	401551		25 (1.7)	1.2 (.54)
17C-SV-2-25 Swivel		1/2	401545		25 (1.7)	1.2 (.54)
17C-A-3-25 Angle	17C-A-3J-25 Angle	3/4	402006	402014	25 (1.7)	1.5 (.7)
17C-S-3-25 Straightaway		3/4	402011		25 (1.7)	1.3 (.6)
17C-A-4-25 Angle		1	402012		25 (1.7)	2.3 (1)

Thermostatic Steam Traps (continued)

Series 8C Balanced Pressure BEARTRAP®

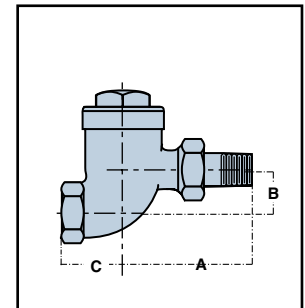
The Series 8C Balanced Pressure Thermostatic Steam Traps are for institutional and commercial heating system applications or others that require high capacity operation.

- Sizes available:
 - 1/2" NPT and BSPT Angle
 - 3/4" NPT and BSPT Angle or Straightaway
- Subcooling for extremely efficient system operation and elimination of flash steam losses on low pressure systems
- Replaceable Dura-Stat® module
- 3-Year Warranty
- Meets Mil specification A-A-60001 Type V, Style A, Class 1 - 4
- Stainless steel components
- Resistant to moderate water hammer and chemical attack
- Maximum operating pressure 125 psig (8.6 bar)



Dimensions, in. (mm)

Model	Pattern	Size	A	B	C
8C	Angle	1/2	2 ²⁷ / ₃₂ (72)	1 ¹ / ₄ (32)	—
8C	Angle	3/4	3 ¹ / ₈ (79)	1 ¹ / ₂ (38)	—
8C	Straightaway	3/4	3 ³ / ₃₂ (80)	1 ¹ / ₈ (29)	1 ⁵ / ₈ (41)



Ordering Information

NPT Model Number	BSPT Model Number	Size in.	NPT Part Number	BSPT Part Number	Differential Pressure Rating psi (bar)	Weight lbs. (kg)
8C-A-2-125 Angle	8C-A-2J-125 Angle 1/2"	1/2	402002	402008	125 (8.6)	1.5 (.7)
8C-A-3-125 Angle	8C-A-3J-125 Angle 3/4"	3/4	402003	402009	125 (8.6)	1.5 (.7)
8C-S-3-125 Straightaway		3/4	402004		125 (8.6)	1.5 (.6)

Gross Ratings

Series	Differential Across Trap psi (bar)											
	1/4 (.017)	1/2 (.034)	1 (.069)	1 1/2 (.10)	2 (.14)	5 (.35)	10 (.7)	15 (1.0)	25 (1.7)	50 (3.5)	100 (6.9)	125 (8.6)
8C	Capacity lbs./hr (kg/hr)											
	110 (50)	150 (68)	210 (95)	255 (116)	300 (136)	480 (218)	760 (345)	950 (431)	1350 (612)	2100 (953)	3500 (1590)	4200 (1905)

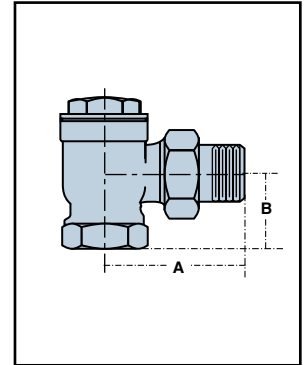
Series 8C capacities are based on 30° F (17°C) subcooling. Cold capacity is approximately 2 times capacity shown.

Thermostatic Steam Traps (continued)

Series 9C Balanced Pressure **BEAR TRAP**

The Series 9C are for institutional and commercial heating system applications or others that require high capacity operation.

- Subcooling for extremely efficient system operation and elimination of flash steam losses on low pressure systems.
- Sizes available:
 - 1" NPT Angle
- Replaceable Dura-Stat® module
- 3-Year Warranty
- Meets Mil specification A-A-60001 Type V, Style A, Class 1 - 4
- Stainless steel components
- Resistant to moderate water hammer and chemical attack
- Maximum operating pressure 125 psig (8.6 bar)



Dimensions, in. (mm)

Model	Pattern	Size	A	B
9C	Angle	1	3 ⁷ / ₃₂ (82)	1 ³ / ₄ (45)

Ordering Information

NPT Model Number	Size in.	NPT Part Number	Differential Pressure Rating psi (bar)	Weight lbs. (kg)
9C-A-4-125 Angle	1	402005	125 (8.6)	2.3 (1)

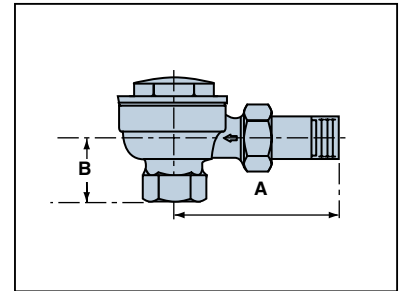
Gross Ratings

Series	Differential Across Trap psi (bar)											
	¼ (.017)	½ (.034)	1 (.069)	1½ (.10)	2 (.14)	5 (.35)	10 (.7)	15 (1.0)	25 (1.7)	50 (3.5)	100 (6.9)	125 (8.6)
9C	Capacity lbs./hr (kg/hr)											
	110 (50)	150 (68)	210 (95)	255 (116)	300 (136)	480 (218)	760 (345)	950 (431)	1350 (612)	2100 (953)	3500 (1590)	4200 (1905)

Thermostatic Steam Traps (continued)

Competitive brand changeover to
Hoffman Specialty **BEARTRAP**® Model 17C

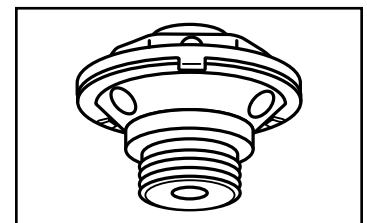
Manufacturer	Model Number	Dimensions in. (mm)		Hoffman Specialty Bear Trap Part Number
		A	B	
Barnes & Jones	122A	3 (76)	1¼ (32)	401536
Dunham Bush /Mepco	1E-AP	3⅛ (79)	1⅛ (29)	401536
Erwell	R30	3¼ (83)	1½ (38)	401536
Illinois	1G, 1GS 1MG	2⅞ (73)	1⅛ (29)	401542
Spirax Sarco	TS-25	2 ¹³ / ₁₆ (71)	1 ³ / ₁₆ (30)	401542
Sterling	7-50	3¼ (83)	1¼ (32)	401536
Trane	B1	3¼ (83)	1 ¹ / ₁₆ (27)	401536
Warren Webster	502, 702	2¾ (70)	1⅛ (29)	401542
Hoffman Specialty	17C w/std. nipple	3¼ (83)	1¼ (32)	401536
Hoffman Specialty	17C w/short nipple	2 ²⁷ / ₃₂ (72)	1¼ (32)	401542



BEARTRAP® Dura-stat® Replacement Modules

For Barnes & Jones, Dunham-Bush, Illinois, Spirax-Sarco, and Hoffman Specialty Thermostatic Steam Traps.

The all Stainless Steel Dura-stat® Replacement Module should be used to upgrade thermostatic steam traps. The Dura-stat is durable and water hammer resistant.



Selection

Trap Manufacturer	NPT Size in.	Model Number	BEARTRAP® Dura-stat® Part Number:
Hoffman Specialty	½	17C	600084
Spirax-Sarco	½	TB-25, TH-25, TS-25, H	600056
Barnes & Jones	½	122	600053
Dunham-Bush/Mepco	½	1C, 1E	600052
Illinois	½	1G	600056
Warren Webster	½	02H, 502	600250

Inverted Bucket Steam Traps

Series B BEAR TRAP®

The Series B inverted bucket traps are designed for a wide range of industrial applications including steam mains, laundry and dry cleaning plants, food processing and those that require a lift in the discharge lines.

Series B0 Inverted Bucket Traps

The Series B0 Inverted Bucket Traps are designed for a wide range of industrial applications including unit heaters, laundry and process equipment and steam line drip traps.

These cast iron inverted bucket traps operate efficiently for long periods of time to add solid energy savings by lowering replacement and labor costs. They are fully repairable for even bigger maintenance savings.

Typical Applications:

- Drip traps in steam lines
- Tracer lines
- Process equipment
- Steam cookers
- Steam kettles
- Steam heated vats
- Pressing machinery
- Unit heaters
- Commercial dishwashing

Features:

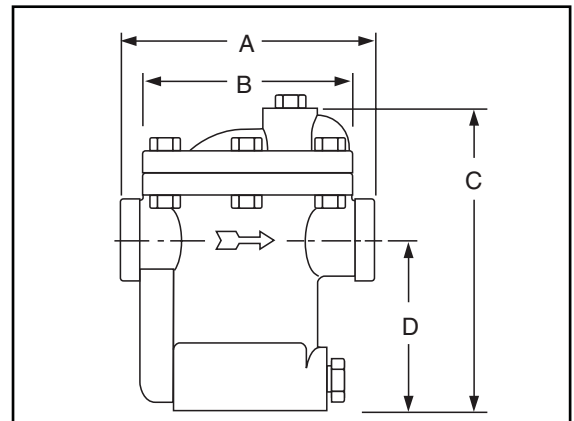
- Available in sizes 1/2" and 3/4" NPT
- Pressure ratings 20, 80, 125 and 150 psig (1.4, 5.5, 8.6, and 10.3 bar)
- Removable covers for easy in-line service
- Stainless steel internal components
- Resistant to moderate water hammer
- Optional built-in strainer to reduce the number of piping connections
- Maximum capacities to 690 lbs/hr (313 kg/hr)
- Maximum temperature 450°F (232°C)
- Maximum allowable pressure (vessel design) 250 psig (17.3 bar)
- Maximum operating pressure 150 psig (10.3 bar)



Series B0 Inverted Bucket Trap

Materials of Construction	
Part	Specifications
Body and cover	Cast Iron
Valve Pin and Seat	Stainless Steel (Hardened)
Bucket	Stainless Steel
Lever Assembly	Stainless Steel
Strainer	Stainless Steel
Cover Gasket	Non-asbestos fiber
Cover Bolts	Grade 8

Dimensions in. (mm)



NPT Size	A	B (Dia.)	C	D
1/2 & 3/4	5 ¹ / ₁₆ (129)	3 ³ / ₄ (95)	6 ³ / ₁₆ (157)	3 ¹ / ₂ (89)

Capacities (Gross Ratings)

Series	Orifice Size in. (mm)	Seat Pressure psi (bar)	Differential Pressure psig (bar)													
			1/2 (.035)	1 (0.07)	5 (0.35)	10 (0.69)	15 (1.03)	20 (1.38)	30 (2.1)	40 (2.8)	50 (3.5)	60 (4.2)	80 (5.5)	100 (6.9)	125 (8.6)	150 (10.3)
			Capacities lbs./hr (kg/hr)													
B0	3/16 (4.7)	20 (1.4)	200 (91)	270 (122)	450 (204)	560 (254)	640 (290)	690 (313)								
	1/8 (3.2)	80 (5.5)	80 (36)	110 (50)	200 (91)	300 (136)	360 (163)	420 (190)	500 (227)	540 (245)	580 (263)	620 (281)	690 (313)			
	7/64 (2.8)	125 (8.6)		55 (25)	90 (41)	145 (66)	195 (88)	260 (118)	345 (156)	400 (181)	442 (200)	485 (220)	565 (256)	640 (290)	680 (308)	
	3/32 (2.4)	150 (10.3)			70 (32)	110 (50)	150 (68)	200 (91)	270 (122)	310 (141)	345 (156)	380 (172)	440 (200)	480 (218)	540 (245)	570 (259)

Ordering Information (Specify the part number on your order)

Model (A) units are basic.

Model (S) units have built-in strainer.

NPT Model Number	BSPT Model Number	Size in.	NPT Part Number	BSPT Part Number	Seat Differential Pressure Rating psi (bar)	Body Design Pressure psi (bar)	Weight lbs. (kg)
B0020A-2	B0020A-2J	1/2	404180	404131	20 (1.4)	250 (17.3)	7 (3)
B0020S-2	B0020S-2J	1/2	404184	404135	20 (1.4)	250 (17.3)	8 (3)
B0080A-2	B0080A-2J	1/2	404181	404132	80 (5.5)	250 (17.3)	9 (3)
B0080S-2	B0080S-2J	1/2	404185	404136	80 (5.5)	250 (17.3)	10 (3)
B0125A-2	B0125A-2J	1/2	404182	404133	125 (8.6)	250 (17.3)	11 (3)
B0125S-2	B0125S-2J	1/2	404186	404137	125 (8.6)	250 (17.3)	12 (3)
B0150A-2	B0150A-2J	1/2	404183	404134	150 (10.3)	250 (17.3)	13 (3)
B0150S-2	B0150S-2J	1/2	404187	404138	150 (10.3)	250 (17.3)	14 (3)
B0020A-3	B0020A-3J	3/4	404188	404139	20 (1.4)	250 (17.3)	15 (3)
B0020S-3	B0020S-3J	3/4	404192	404143	20 (1.4)	250 (17.3)	16 (3)
B0080A-3	B0080A-3J	3/4	404189	404140	80 (5.5)	250 (17.3)	17 (3)
B0080S-3	B0080S-3J	3/4	404193	404144	80 (5.5)	250 (17.3)	18 (3)
B0125A-3	B0125A-3J	3/4	404190	404141	125 (8.6)	250 (17.3)	19 (3)
B0125S-3	B0125S-3J	3/4	404194	404145	125 (8.6)	250 (17.3)	20 (3)
B0150A-3	B0150A-3J	3/4	404191	404142	150 (10.3)	250 (17.3)	21 (3)
B0150S-3	B0150S-3J	3/4	404195	404146	150 (10.3)	250 (17.3)	22 (3)

Inverted Bucket Steam Traps

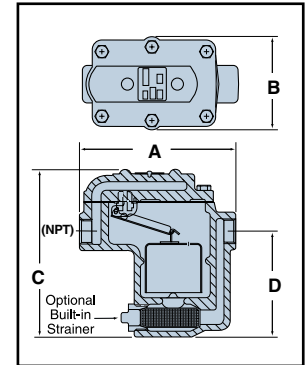
Series B BEAR TRAP®

The Series B inverted bucket traps are designed for a wide range of industrial applications including steam mains, laundry and dry cleaning plants, food processing and those that require a lift in the discharge lines.

Series B BEAR TRAP®

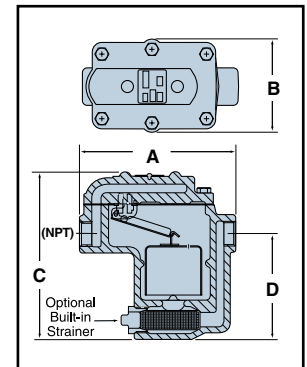
Series B1

- Available in sizes 1/2" and 3/4" NPT and BSPT
- Meets Mil specification WW-T-696-E Type I, Style B, Class 1-7
- Removable covers for easy in-line service
- Erosion resistant covers
- Stainless steel internal components
- Resistant to moderate water hammer
- Optional built-in thermic vent for faster heating
- Optional built-in strainer to reduce the number of piping connections
- Maximum capacities to 1700 lbs/hr. (771 kg/hr.)
- Maximum temperature 450°F (230°C)
- Maximum operating pressure 250 psig (17.3 bar)



Series B2

- 3/4" NPT and BSPT
- Meets Mil specification WW-T-696-E Type I, Style B, Class 1-7
- Removable covers for easy in-line service
- Erosion resistant covers
- Stainless steel internal components
- Resistant to moderate water hammer
- Optional built-in thermic vent for faster heating
- Optional built-in strainer to reduce the number of piping connections
- Maximum capacities to 2620 lbs./hr (1188 kg/hr.)
- Maximum temperature 450°F (230°C)
- Maximum operating pressure 250 psig (17.3 bar)



Materials of Construction	
Part	Specifications
Body and cover	Cast Iron 30,000 psi tensile
Valve Pin and Seat	Stainless Steel (Hardened)
Bucket	Stainless Steel
Lever Assembly	Stainless Steel
Cover Bolts	Grade 5 Steel

Dimensions in. (mm)

Series	Size	A	B	C	D
B1	1/2, 3/4	6 ¹⁵ / ₁₆ (177)	3 ¹³ / ₁₆ (97)	7 ¹ / ₄ (184)	4 ³ / ₈ (111)
B2	3/4	6 ¹⁵ / ₁₆ (177)	3 ¹³ / ₁₆ (97)	9 ¹ / ₁₆ (230)	6 ⁷ / ₈ (158)

Series B BEAR TRAP®

How to Select

The trap capacity should be selected based on the minimum differential pressure between the inlet pressure and outlet pressure. The trap seat must be capable of opening against the maximum inlet steam pressure. When the traps are used on applications where the steam is controlled by a modulating temperature regulator, the trap is normally selected to handle the full condensate load including safety factor at 1/2 psi (.034 bar) differential pressure.

Part of the



EQUIPMENT SELECTION PROGRAM

For selection information, please refer to "Selection Guidelines" on page 129.

For computer aided selection of Inverted Bucket Steam Traps, please refer to the "Steam Specialty Component Selectors" on the Hoffman Specialty website, www.hoffmanspecialty.com or, for a stand-alone version of EPS-PLUS, contact your local Hoffman Specialty Representative (see back cover for listing).

Capacities (Gross Ratings)

Series	Orifice Size in. (mm)	Seat Pressure psi (bar)	Differential Pressure psig (bar)																
			1/2 (.035)	1 (0.07)	2 (0.14)	5 (0.35)	10 (0.69)	15 (1.0)	20 (1.4)	30 (2.1)	40 (2.8)	50 (3.5)	60 (4.2)	75 (5.2)	100 (6.9)	125 (8.6)	180 (12.4)	200 (13.8)	250 (17.3)
B1	Capacities lbs./hr (kg/hr)																		
	.250	15	500	650	835	1145	1490	1700											
	(6.4)	(1.0)	(227)	(295)	(379)	(519)	(676)	(771)											
	.187	30	260	345	460	680	905	1060	1200	1440									
	(4.7)	(2.1)	(118)	(156)	(209)	(308)	(411)	(481)	(544)	(653)									
	.156	75	200	255	335	480	605	695	775	900	980	1070	1130	1200					
	(4.0)	(5.2)	(91)	(116)	(152)	(218)	(274)	(315)	(352)	(408)	(445)	(485)	(513)	(544)					
	.125	125	115	150	195	275	355	410	460	530	595	640	690	745	830	920			
	(3.2)	(8.6)	(52)	(68)	(88)	(125)	(161)	(186)	(209)	(240)	(270)	(290)	(313)	(338)	(376)	(417)			
	.094	180	80	105	140	205	275	320	360	425	480	520	560	620	705	780	930		
(2.4)	(10.4)	(36)	(48)	(64)	(93)	(125)	(145)	(163)	(193)	(218)	(236)	(254)	(281)	(320)	(354)	(422)			
.070	250	28	40	55	90	125	150	175	215	250	275	305	340	400	450	570	600	700	
(1.8)	(17)	(13)	(18)	(25)	(41)	(57)	(68)	(79)	(98)	(113)	(125)	(138)	(154)	(181)	(204)	(259)	(272)	(318)	
B2	.360	15	750	975	1255	1755	2280	2620											
	(9.1)	(1.0)	(340)	(447)	(569)	(796)	(1034)	(1188)											
	.282	30	650	810	1005	1350	1700	1950	2130	2400									
	(7.1)	(2.1)	(295)	(367)	(456)	(612)	(771)	(885)	(966)	(1089)									
	.250	75	490	600	740	980	1220	1340	1440	1600	1760	1910	2030	2170					
	(6.4)	(5.2)	(222)	(272)	(336)	(445)	(553)	(608)	(653)	(726)	(798)	(866)	(921)	(984)					
	.203	125	350	450	580	830	905	920	1020	1180	1310	1430	1540	1680	1920	2100			
	(5.2)	(8.6)	(159)	(204)	(263)	(376)	(411)	(417)	(463)	(535)	(594)	(649)	(699)	(762)	(871)	(953)			
	.156	180	200	255	330	460	580	675	740	840	930	1020	1090	1190	1350	1480	1725		
	(4.0)	(10.4)	(91)	(116)	(150)	(209)	(263)	(306)	(336)	(381)	(422)	(463)	(494)	(540)	(612)	(671)	(782)		
.141	250	180	235	305	430	540	620	680	780	870	940	1000	1100	1270	1415	1650	1740	1890	
(3.6)	(17)	(82)	(107)	(138)	(195)	(245)	(281)	(308)	(354)	(395)	(426)	(453)	(499)	(576)	(642)	(748)	(789)	(857)	

Inverted Bucket Steam Traps (continued)

Ordering Information (Specify the part number on your order)

Model (A) units are basic.

Model (B) units have a built-in strainer and thermic vent for fast venting.

Model (S) units have a built-in strainer.

Model (T) units have an optional thermic vent built-in for faster venting.

Example: Model Number B1030A-2

B1 (Unit size selected from capacity table)

030 (Differential seat pressure rating)

A (Basic Unit)

2 (Connection Size - 1/4 of an inch)

Series B1 Ordering Information

NPT Model Number	BSPT Model Number	Size in.	NPT Part Number	BSPT Part Number	Seat Differential Pressure Rating psi (bar)	Body Design Pressure psi (bar)	Weight lbs. (kg)
B1015A-2	B1015A-2J	1/2	404300	404600	15 (1.0)	250 (17.3)	11 (5)
B1015S-2	B1015S-2J	1/2	404301	404601	15 (1.0)	250 (17.3)	11 (5)
B1015T-2	B1015T-2J	1/2	404302	404602	15 (1.0)	250 (17.3)	11 (5)
B1015B-2	B1015B-2J	1/2	404303	404603	15 (1.0)	250 (17.3)	11 (5)
B1015A-3	B1015A-3J	3/4	404324	404624	15 (1.0)	250 (17.3)	11 (5)
B1015S-3	B1015S-3J	3/4	404325	404625	15 (1.0)	250 (17.3)	11 (5)
B1015T-3	B1015T-3J	3/4	404326	404626	15 (1.0)	250 (17.3)	11 (5)
B1015B-3	B1015B-3J	3/4	404327	404627	15 (1.0)	250 (17.3)	11 (5)
B1030A-2	B1030A-2J	1/2	404304	404604	30 (2.1)	250 (17.3)	11 (5)
B1030S-2	B1030S-2J	1/2	404305	404605	30 (2.1)	250 (17.3)	11 (5)
B1030T-2	B1030T-2J	1/2	404306	404606	30 (2.1)	250 (17.3)	11 (5)
B1030B-2	B1030B-2J	1/2	404307	404607	30 (2.1)	250 (17.3)	11 (5)
B1030A-3	B1030A-3J	3/4	404328	404628	30 (2.1)	250 (17.3)	11 (5)
B1030S-3	B1030S-3J	3/4	404329	404629	30 (2.1)	250 (17.3)	11 (5)
B1030T-3	B1030T-3J	3/4	404330	404630	30 (2.1)	250 (17.3)	11 (5)
B1030B-3	B1030B-3J	3/4	404331	404631	30 (2.1)	250 (17.3)	11 (5)
B1075A-2	B1075A-2J	1/2	404308	404608	75 (5.2)	250 (17.3)	11 (5)
B1075S-2	B1075S-2J	1/2	404309	404609	75 (5.2)	250 (17.3)	11 (5)
B1075T-2	B1075T-2J	1/2	404310	404610	75 (5.2)	250 (17.3)	11 (5)
B1075B-2	B1075B-2J	1/2	404311	404611	75 (5.2)	250 (17.3)	11 (5)
B1075A-3	B1075A-3J	3/4	404332	404632	75 (5.2)	250 (17.3)	11 (5)
B1075S-3	B1075S-3J	3/4	404333	404633	75 (5.2)	250 (17.3)	11 (5)
B1075T-3	B1075T-3J	3/4	404334	404634	75 (5.2)	250 (17.3)	11 (5)
B1075B-3	B1075B-3J	3/4	404335	404635	75 (5.2)	250 (17.3)	11 (5)
B1125A-2	B1125A-2J	1/2	404312	404612	125 (8.6)	250 (17.3)	11 (5)
B1125S-2	B1125S-2J	1/2	404313	404613	125 (8.6)	250 (17.3)	11 (5)
B1125T-2	B1125T-2J	1/2	404314	404614	125 (8.6)	250 (17.3)	11 (5)
B1125B-2	B1125B-2J	1/2	404315	404615	125 (8.6)	250 (17.3)	11 (5)
B1125A-3	B1125A-3J	3/4	404336	404636	125 (8.6)	250 (17.3)	11 (5)
B1125S-3	B1125S-3J	3/4	404337	404637	125 (8.6)	250 (17.3)	11 (5)
B1125T-3	B1125T-3J	3/4	404338	404638	125 (8.6)	250 (17.3)	11 (5)
B1125B-3	B1125B-3J	3/4	404339	404639	125 (8.6)	250 (17.3)	11 (5)

Series B BEAR TRAP®
Series B1 Ordering Information - continued

NPT Model Number	BSPT Model Number	Size in.	NPT Part Number	BSPT Part Number	Seat Differential Pressure Rating psi (bar)	Body Design Pressure psi (bar)	Weight lbs. (kg)
B1180A-2	B1180A-2J	1/2	404316	404616	180 (12.4)	250 (17.3)	11 (5)
B1180S-2	B1180S-2J	1/2	404317	404617	180 (12.4)	250 (17.3)	11 (5)
B1180T-2	B1180T-2J	1/2	404318	404618	180 (12.4)	250 (17.3)	11 (5)
B1180B-2	B1180B-2J	1/2	404319	404619	180 (12.4)	250 (17.3)	11 (5)
B1180A-3	B1180A-3J	3/4	404340	404640	180 (12.4)	250 (17.3)	11 (5)
B1180S-3	B1180S-3J	3/4	404341	404641	180 (12.4)	250 (17.3)	11 (5)
B1180T-3	B1180T-3J	3/4	404342	404642	180 (12.4)	250 (17.3)	11 (5)
B1180B-3	B1180B-3J	3/4	404343	404643	180 (12.4)	250 (17.3)	11 (5)
B1250A-2	B1250A-2J	1/2	404320	404620	250 (17.3)	250 (17.3)	11 (5)
B1250S-2	B1250S-2J	1/2	404321	404621	250 (17.3)	250 (17.3)	11 (5)
B1250T-2	B1250T-2J	1/2	404322	404622	250 (17.3)	250 (17.3)	11 (5)
B1250B-2	B1250B-2J	1/2	404323	404623	250 (17.3)	250 (17.3)	11 (5)
B1250A-3	B1250A-3J	3/4	404344	404644	250 (17.3)	250 (17.3)	11 (5)
B1250S-3	B1250S-3J	3/4	404345	404645	250 (17.3)	250 (17.3)	11 (5)
B1250T-3	B1250T-3J	3/4	404346	404646	250 (17.3)	250 (17.3)	11 (5)
B1250B-3	B1250B-3J	3/4	404347	404647	250 (17.3)	250 (17.3)	11 (5)

Series B2 Ordering Information

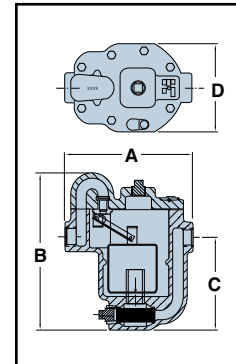
NPT Model Number	BSPT Model Number	Size in.	NPT Part Number	BSPT Part Number	Seat Differential Pressure Rating psi (bar)	Body Design Pressure psi (bar)	Weight lbs. (kg)
B2015A-3	B2015A-3J	3/4	404348	404648	15 (1.0)	250 (17.3)	12.5 (5.7)
B2015S-3	B2015S-3J	3/4	404349	404649	15 (1.0)	250 (17.3)	12.5 (5.7)
B2015T-3	B2015T-3J	3/4	404350	404650	15 (1.0)	250 (17.3)	12.5 (5.7)
B2015B-3	B2015B-3J	3/4	404351	404651	15 (1.0)	250 (17.3)	12.5 (5.7)
B2030A-3	B2030A-3J	3/4	404352	404652	30 (2.1)	250 (17.3)	12.5 (5.7)
B2030S-3	B2030S-3J	3/4	404353	404653	30 (2.1)	250 (17.3)	12.5 (5.7)
B2030T-3	B2030T-3J	3/4	404354	404654	30 (2.1)	250 (17.3)	12.5 (5.7)
B2030B-3	B2030B-3J	3/4	404355	404655	30 (2.1)	250 (17.3)	12.5 (5.7)
B2075A-3	B2075A-3J	3/4	404356	404656	75 (5.2)	250 (17.3)	12.5 (5.7)
B2075S-3	B2075S-3J	3/4	404357	404657	75 (5.2)	250 (17.3)	12.5 (5.7)
B2075T-3	B2075T-3J	3/4	404358	404658	75 (5.2)	250 (17.3)	12.5 (5.7)
B2075B-3	B2075B-3J	3/4	404359	404659	75 (5.2)	250 (17.3)	12.5 (5.7)
B2125A-3	B2125A-3J	3/4	404360	404660	125 (8.6)	250 (17.3)	12.5 (5.7)
B2125S-3	B2125S-3J	3/4	404361	404661	125 (8.6)	250 (17.3)	12.5 (5.7)
B2125T-3	B2125T-3J	3/4	404362	404662	125 (8.6)	250 (17.3)	12.5 (5.7)
B2125B-3	B2125B-3J	3/4	404363	404663	125 (8.6)	250 (17.3)	12.5 (5.7)
B2180A-3	B2180A-3J	3/4	404364	404664	180 (12.4)	250 (17.3)	12.5 (5.7)
B2180S-3	B2180S-3J	3/4	404365	404665	180 (12.4)	250 (17.3)	12.5 (5.7)
B2180T-3	B2180T-3J	3/4	404366	404666	180 (12.4)	250 (17.3)	12.5 (5.7)
B2180B-3	B2180B-3J	1/2	404367	404667	250 (17.3)	250 (17.3)	12.5 (5.7)
B2250A-3	B2250A-3J	3/4	404368	404668	250 (17.3)	250 (17.3)	12.5 (5.7)
B2250S-3	B2250S-3J	3/4	404369	404669	250 (17.3)	250 (17.3)	12.5 (5.7)
B2250T-3	B2250T-3J	3/4	404370	404670	250 (17.3)	250 (17.3)	12.5 (5.7)
B2250B-3	B2250B-3J	3/4	404371	404671	250 (17.3)	250 (17.3)	12.5 (5.7)

Inverted Bucket Steam Traps (continued)

Series B BEAR TRAP®

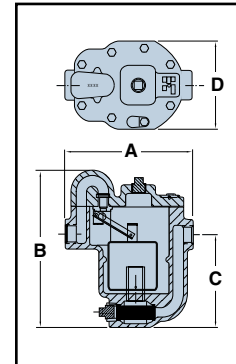
Series B3

- Available in sizes ¾" and 1" NPT and BSPT
- Meets Mil specification WW-T-696-E Type I, Style B, Class 1-7
- Removable covers for easy in-line service
- Stainless steel internal components
- Resistant to moderate water hammer
- Optional built-in thermic vent for faster heating
- Optional built-in strainer to reduce the number of piping connections
- Maximum capacities to 5000 lbs/hr (2268 kg/hr.)
- Maximum temperature 450°F (230°C)
- Maximum operating pressure 250 psig (17.3 bar)



Series B4

- Available in sizes 1", 1¼", 1½" NPT and BSPT
- Meets Mil specification WW-T-696-E Type I, Style B, Class 1-7
- Removable covers for easy in-line service
- Stainless steel internal components
- Resistant to moderate water hammer
- Optional built-in thermic vent for faster heating
- Optional built-in strainer to reduce the number of piping connections
- Maximum capacities to 9424 lbs/hr (4275 kg/hr.)
- Maximum temperature 450°F (230°C)
- Maximum operating pressure 250 psig (17.3 bar)



Materials of Construction	
Part	Specifications
Body and cover	Cast Iron 30,000 psi tensile
Valve Pin and Seat	Stainless Steel (Hardened)
Bucket	Stainless Steel
Lever Assembly	Stainless Steel
Cover Bolts	Grade 5 Steel

Dimensions in. (mm)

Series	Size	A	B	C	D
B3	¾, 1	9 ⁷ / ₁₆ (239)	11 ⁵ / ₈ (294)	6 ⁷ / ₈ (174)	6 ⁹ / ₁₆ (166)
B4	1, 1¼, 1½	11 ³ / ₈ (289)	14 ³ / ₁₆ (360)	8 ⁵ / ₁₆ (211)	8 ¹ / ₈ (206)

Series B BEAR TRAP

Capacities (Gross Ratings)

Differential Pressure psig (bar)																			
Series	Orifice Size In (mm)	Seat Pressure psi (bar)	1/2	1	2	5	10	15	20	30	40	50	60	75	100	125	180	200	250
			(.035)	(0.07)	(0.14)	(0.35)	(0.69)	(1.0)	(1.4)	(2.1)	(2.8)	(3.5)	(4.2)	(5.2)	(6.9)	(8.6)	(12.4)	(13.8)	(17)
Capacity lbs./hr. (kg/hr.)																			
B3	.500	15	1450	1850	2300	3050	3700	4100	-	-	-	-	-	-	-	-	-	-	-
	(12.7)	(1.0)	(658)	(839)	(1043)	(1383)	(1678)	(1860)	-	-	-	-	-	-	-	-	-	-	-
	.375	30	720	980	1340	2020	2760	3300	3750	4470	-	-	-	-	-	-	-	-	-
	(9.53)	(2.1)	(327)	(435)	(608)	(916)	(1252)	(1497)	(1701)	(2028)	-	-	-	-	-	-	-	-	-
	.281	75	500	680	915	1370	1860	2200	2500	2980	3370	3720	4050	4460	-	-	-	-	-
	(7.14)	(5.2)	(227)	(308)	(415)	(621)	(762)	(998)	(1134)	(1352)	(1529)	(1687)	(1837)	(2023)	-	-	-	-	-
	.250	125	435	590	800	1200	1630	1950	2220	2665	3020	3325	3600	3970	4540	5000	-	-	-
	(6.35)	(8.6)	(197)	(268)	(363)	(544)	(739)	(885)	(1007)	(1209)	(1370)	(1508)	(1633)	(1801)	(2059)	(2268)	-	-	-
	.219	180	300	415	570	870	1190	1440	1640	1970	2250	2490	2690	2960	3400	3790	4440	-	-
	(5.56)	(10.4)	(136)	(188)	(259)	(395)	(540)	(653)	(744)	(894)	(1021)	(1129)	(1220)	(1343)	(1542)	(1719)	(2014)	-	-
.188	250	256	355	485	740	1010	1210	1390	1675	1900	2100	2285	2535	2890	3200	3780	3980	4340	
(4.78)	(17)	(116)	(161)	(220)	(336)	(458)	(549)	(631)	(760)	(862)	(953)	(1036)	(1150)	(1311)	(1452)	(1715)	(1805)	(1969)	
B4	.625	15	2382	2991	3755	5071	6366	7272	-	-	-	-	-	-	-	-	-	-	-
	(16)	(1.0)	(1080)	(1357)	(1703)	(2300)	(2888)	(3300)	-	-	-	-	-	-	-	-	-	-	-
	.5	30	1565	2053	2693	3855	5056	5926	6633	7774	-	-	-	-	-	-	-	-	-
	(12.7)	(2.1)	(710)	(931)	(1222)	(1749)	(2293)	(2688)	(3009)	(3526)	-	-	-	-	-	-	-	-	-
	.375	75	825	1137	1568	2396	3302	3983	4550	5489	6271	6953	7566	8389	-	-	-	-	-
	(9.53)	(5.2)	(374)	(516)	(711)	(1087)	(1498)	(1798)	(2064)	(2490)	(2845)	(3154)	(3432)	(3805)	-	-	-	-	-
	.344	125	780	1067	1459	2205	3015	3621	4122	4950	5636	6233	6767	7484	8522	9424	-	-	-
	(7.7)	(8.6)	(354)	(484)	(662)	(1000)	(1377)	(1642)	(1870)	(2245)	(2556)	(2827)	(3069)	(3395)	(3866)	(4275)	-	-	-
	.281	180	522	719	991	1516	2089	2521	2881	3476	3971	4403	4791	5313	6070	6732	7970	-	-
	(7.14)	(10.4)	(237)	(326)	(450)	(688)	(948)	(1144)	(1307)	(1577)	(1801)	(1997)	(2173)	(2410)	(2753)	(3054)	(3615)	-	-
.25	250	389	543	759	1180	1649	2005	2303	2801	3218	3583	3913	4357	5006	5574	6646	6993	7787	
(6.35)	(17)	(176)	(246)	(344)	(535)	(748)	(909)	(1045)	(1271)	(1460)	(1625)	(1775)	(1976)	(2270)	(2528)	(3015)	(3172)	(3532)	

Ordering Information (Specify the part number on your order)

Model (A) units are basic.
Model (B) units have a built-in strainer and thermic vent for fast venting.
Model (S) units have a built-in strainer.
Model (T) units have an optional thermic vent built-in for faster venting.

Example:
Model Number B3030A-3J
B3 (Unit size selected from capacity table)
030 (Differential seat pressure rating)
A (Basic Unit)
3 (Connection Size - 1/4 of an inch)
J (BSPT Thread Option)

Series B3 Ordering Information

NPT Model Number	BSPT Model Number	Size in.	NPT Part Number	BSPT Part Number	Seat Differential Pressure Rating psi (bar)	Body Design Pressure psi (bar)	Weight lbs. (kg)
B3015A-3	B3015A-3J	3/4	404400	404752	15 (1.0)	250 (17.3)	35 (16)
B3015S-3	B3015S-3J	3/4	404406	404758	15 (1.0)	250 (17.3)	35 (16)
B3015T-3	B3015T-3J	3/4	404412	404763	15 (1.0)	250 (17.3)	35 (16)
B3015B-3	B3015B-3J	3/4	404418	404769	15 (1.0)	250 (17.3)	35 (16)
B3015A-4	B3015A-4J	1	404424	404775	15 (1.0)	250 (17.3)	35 (16)
B3015S-4	B3015S-4J	1	404430	404781	15 (1.0)	250 (17.3)	35 (16)
B3015T-4	B3015T-4J	1	404436	404787	15 (1.0)	250 (17.3)	35 (16)
B3015B-4	B3015B-4J	1	404442	404793	15 (1.0)	250 (17.3)	35 (16)
B3030A-3	B3030A-3J	3/4	404401	404753	30 (2.1)	250 (17.3)	35 (16)
B3030S-3	B3030S-3J	3/4	404407	404759	30 (2.1)	250 (17.3)	35 (16)
B3030T-3	B3030T-3J	3/4	404413	404764	30 (2.1)	250 (17.3)	35 (16)
B3030B-3	B3030B-3J	3/4	404419	404770	30 (2.1)	250 (17.3)	35 (16)
B3030A-4	B3030A-4J	1	404425	404776	30 (2.1)	250 (17.3)	35 (16)
B3030S-4	B3030S-4J	1	404431	404782	30 (2.1)	250 (17.3)	35 (16)
B3030T-4	B3030T-4J	1	404437	404788	30 (2.1)	250 (17.3)	35 (16)
B3030B-4	B3030B-4J	1	404443	404794	30 (2.1)	250 (17.3)	35 (16)

Inverted Bucket Steam Traps (continued)

Series B BEAR TRAP®

Ordering Information (Specify the part number on your order)

Model (A) units are basic.

Model (B) units have a built-in strainer and thermic vent for fast venting.

Model (S) units have a built-in strainer.

Model (T) units have an optional thermic vent built-in for faster venting.

Example: Model Number B3030A-3J

B3 (Unit size selected from capacity table)

030 (Differential seat pressure rating)

A (Basic Unit)

3 (Connection Size - 1/4 of an inch)

J (BSPT Thread Option)

Series B3 Ordering Information - continued

NPT Model Number	BSPT Model Number	Size in.	NPT Part Number	BSPT Part Number	Seat Differential Pressure Rating psi (bar)	Body Design Pressure psi (bar)	Weight lbs. (kg)
B3075A-3	B3075A-3J	3/4	404402	404754	75 (5.2)	250 (17.3)	35 (16)
B3075S-3	B3075S-3J	3/4	404408	404760	75 (5.2)	250 (17.3)	35 (16)
B3075T-3	B3075T-3J	3/4	404414	404765	75 (5.2)	250 (17.3)	35 (16)
B3075B-3	B3075B-3J	3/4	404420	404771	75 (5.2)	250 (17.3)	35 (16)
B3075A-4	B3075A-4J	1	404426	404777	75 (5.2)	250 (17.3)	35 (16)
B3075S-4	B3075S-4J	1	404432	404783	75 (5.2)	250 (17.3)	35 (16)
B3075T-4	B3075T-4J	1	404438	404789	75 (5.2)	250 (17.3)	35 (16)
B3075B-4	B3075B-4J	1	404444	404478	75 (5.2)	250 (17.3)	35 (16)
B3125A-3	B3125A-3J	3/4	404403	404755	125 (8.6)	250 (17.3)	35 (16)
B3125S-3	B3125S-3J	3/4	404409	404479	125 (8.6)	250 (17.3)	35 (16)
B3125T-3	B3125T-3J	3/4	404415	404766	125 (8.6)	250 (17.3)	35 (16)
B3125B-3	B3125B-3J	3/4	404421	404772	125 (8.6)	250 (17.3)	35 (16)
B3125A-4	B3125A-4J	1	404427	404778	125 (8.6)	250 (17.3)	35 (16)
B3125S-4	B3125S-4J	1	404433	404784	125 (8.6)	250 (17.3)	35 (16)
B3125T-4	B3125T-4J	1	404439	404790	125 (8.6)	250 (17.3)	35 (16)
B3125B-4	B3125B-4J	1	404445	404795	125 (8.6)	250 (17.3)	35 (16)
B3180A-3	B3180A-3J	3/4	404404	404756	180 (12.4)	250 (17.3)	35 (16)
B3180S-3	B3180S-3J	3/4	404410	404761	180 (12.4)	250 (17.3)	35 (16)
B3180T-3	B3180T-3J	3/4	404416	404767	180 (12.4)	250 (17.3)	35 (16)
B3180B-3	B3180B-3J	3/4	404422	404773	180 (12.4)	250 (17.3)	35 (16)
B3180A-4	B3180A-4J	1	404428	404779	180 (12.4)	250 (17.3)	35 (16)
B3180S-4	B3180S-4J	1	404434	404785	180 (12.4)	250 (17.3)	35 (16)
B3180T-4	B3180T-4J	1	404440	404791	180 (12.4)	250 (17.3)	35 (16)
B3180B-4	B3180B-4J	1	404446	404796	180 (12.4)	250 (17.3)	35 (16)
B3250A-3	B3250A-3J	3/4	404405	404757	250 (17.3)	250 (17.3)	35 (16)
B3250S-3	B3250S-3J	3/4	404411	404762	250 (17.3)	250 (17.3)	35 (16)
B3250T-3	B3250T-3J	3/4	404417	404768	250 (17.3)	250 (17.3)	35 (16)
B3250B-3	B3250B-3J	3/4	404423	404774	250 (17.3)	250 (17.3)	35 (16)
B3250A-4	B3250A-4J	1	404429	404780	250 (17.3)	250 (17.3)	35 (16)
B3250S-4	B3250S-4J	1	404435	404786	250 (17.3)	250 (17.3)	35 (16)
B3250T-4	B3250T-4J	1	404441	404792	250 (17.3)	250 (17.3)	35 (16)
B3250B-4	B3250B-4J	1	404447	404797	250 (17.3)	250 (17.3)	35 (16)

Series B BEARTRAP®
Series B4 Ordering Information

NPT Model Number	BSPT Model Number	Size in.	NPT Part Number	BSPT Part Number	Seat Differential Pressure Rating		Body Design Pressure		Weight	
					psi (bar)	psi (bar)	psi (bar)	psi (bar)	lbs. (kg)	lbs. (kg)
B4015A-4	B4015A-4J	1	404500	404798	15	(1.0)	250	(17.3)	61	(28)
B4015S-4	B4015S-4J	1	404506	404804	15	(1.0)	250	(17.3)	61	(28)
B4015T-4	B4015T-4J	1	404512	404810	15	(1.0)	250	(17.3)	61	(28)
B4015B-4	B4015B-4J	1	404518	404816	15	(1.0)	250	(17.3)	61	(28)
B4015A-5	B4015A-5J	1¼	404524	404822	15	(1.0)	250	(17.3)	61	(28)
B4015S-5	B4015S-5J	1¼	404530	404828	15	(1.0)	250	(17.3)	61	(28)
B4015T-5	B4015T-5J	1¼	404536	404833	15	(1.0)	250	(17.3)	61	(28)
B4015B-5	B4015B-5J	1¼	404542	404839	15	(1.0)	250	(17.3)	61	(28)
B4015A-6	B4015A-6J	1½	404548	404845	15	(1.0)	250	(17.3)	61	(28)
B4015S-6	B4015S-6J	1½	404554	404851	15	(1.0)	250	(17.3)	61	(28)
B4015T-6	B4015T-6J	1½	404560	404856	15	(1.0)	250	(17.3)	61	(28)
B4015B-6	B4015B-6J	1½	404566	404862	15	(1.0)	250	(17.3)	61	(28)
B4030A-4	B4030A-4J	1	404501	404799	30	(2.1)	250	(17.3)	61	(28)
B4030S-4	B4030S-4J	1	404507	404805	30	(2.1)	250	(17.3)	61	(28)
B4030T-4	B4030T-4J	1	404513	404811	30	(2.1)	250	(17.3)	61	(28)
B4030B-4	B4030B-4J	1	404519	404817	30	(2.1)	250	(17.3)	61	(28)
B4030A-5	B4030A-5J	1¼	404525	404823	30	(2.1)	250	(17.3)	61	(28)
B4030S-5	B4030S-5J	1¼	404531	404829	30	(2.1)	250	(17.3)	61	(28)
B4030T-5	B4030T-5J	1¼	404537	404934	30	(2.1)	250	(17.3)	61	(28)
B4030B-5	B4030B-5J	1¼	404543	404840	30	(2.1)	250	(17.3)	61	(28)
B4030A-6	B4030A-6J	1½	404549	404846	30	(2.1)	250	(17.3)	61	(28)
B4030S-6	B4030S-6J	1½	404555	404852	30	(2.1)	250	(17.3)	61	(28)
B4030T-6	B4030T-6J	1½	404561	404857	30	(2.1)	250	(17.3)	61	(28)
B4030B-6	B4030B-6J	1½	404567	404863	30	(2.1)	250	(17.3)	61	(28)
B4075A-4	B4075A-4J	1	404502	404800	75	(5.2)	250	(17.3)	61	(28)
B4075S-4	B4075S-4J	1	404508	404806	75	(5.2)	250	(17.3)	61	(28)
B4075T-4	B4075T-4J	1	404514	404812	75	(5.2)	250	(17.3)	61	(28)
B4075B-4	B4075B-4J	1	404520	404818	75	(5.2)	250	(17.3)	61	(28)
B4075A-5	B4075A-5J	1¼	404526	404824	75	(5.2)	250	(17.3)	61	(28)
B4075S-5	B4075S-5J	1¼	404532	404830	75	(5.2)	250	(17.3)	61	(28)
B4075T-5	B4075T-5J	1¼	404538	404835	75	(5.2)	250	(17.3)	61	(28)
B4075B-5	B4075B-5J	1¼	404544	404841	75	(5.2)	250	(17.3)	61	(28)
B4075A-6	B4075A-6J	1½	404550	404847	75	(5.2)	250	(17.3)	61	(28)
B4075S-6	B4075S-6J	1½	404556	404853	75	(5.2)	250	(17.3)	61	(28)
B4075T-6	B4075T-6J	1½	404562	404858	75	(5.2)	250	(17.3)	61	(28)
B4075B-6	B4075B-6J	1½	404568	404864	75	(5.2)	250	(17.3)	61	(28)
B4125A-4	B4125A-4J	1	404503	404801	125	(8.6)	250	(17.3)	61	(28)
B4125S-4	B4125S-4J	1	404509	404807	125	(8.6)	250	(17.3)	61	(28)
B4125T-4	B4125T-4J	1	404515	404813	125	(8.6)	250	(17.3)	61	(28)
B4125B-4	B4125B-4J	1	404521	404819	125	(8.6)	250	(17.3)	61	(28)
B4125A-5	B4125A-5J	1¼	404527	404825	125	(8.6)	250	(17.3)	61	(28)
B4125S-5	B4125S-5J	1¼	404533	404572	125	(8.6)	250	(17.3)	61	(28)
B4125T-5	B4125T-5J	1¼	404539	404836	125	(8.6)	250	(17.3)	61	(28)
B4125B-5	B4125B-5J	1¼	404545	404842	125	(8.6)	250	(17.3)	61	(28)
B4125A-6	B4125A-6J	1½	404551	404848	125	(8.6)	250	(17.3)	61	(28)
B4125S-6	B4125S-6J	1½	404557	404573	125	(8.6)	250	(17.3)	61	(28)
B4125T-6	B4125T-6J	1½	404563	404859	125	(8.6)	250	(17.3)	61	(28)
B4125B-6	B4125B-6J	1½	404569	404751	125	(8.6)	250	(17.3)	61	(28)

Inverted Bucket Steam Traps (continued)

Series B BEAR TRAP®

Series B4 Ordering Information - continued

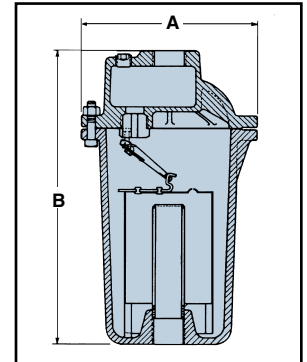
NPT Model Number	BSPT Model Number	Size in.	NPT Part Number	BSPT Part Number	Seat Differential Pressure Rating psi (bar)	Body Design Pressure psi (bar)	Weight lbs. (kg)
B4180A-4	B4180A-4J	1	404504	404802	180 (12.4)	250 (17.3)	61 (28)
B4180S-4	B4180S-4J	1	404510	404808	180 (12.4)	250 (17.3)	61 (28)
B4180T-4	B4180T-4J	1	404516	404814	180 (12.4)	250 (17.3)	61 (28)
B4180B-4	B4180B-4J	1	404522	404820	180 (12.4)	250 (17.3)	61 (28)
B4180A-5	B4180A-5J	1¼	404528	404826	180 (12.4)	250 (17.3)	61 (28)
B4180S-5	B4180S-5J	1¼	404534	404831	180 (12.4)	250 (17.3)	61 (28)
B4180T-5	B4180T-5J	1¼	404540	404837	180 (12.4)	250 (17.3)	61 (28)
B4180B-5	B4180B-5J	1¼	404546	404843	180 (12.4)	250 (17.3)	61 (28)
B4180A-6	B4180A-6J	1½	404552	404849	180 (12.4)	250 (17.3)	61 (28)
B4180S-6	B4180S-6J	1½	404558	404854	180 (12.4)	250 (17.3)	61 (28)
B4180T-6	B4180T-6J	1½	404564	404860	180 (12.4)	250 (17.3)	61 (28)
B4180B-6	B4180B-6J	1½	404570	404865	180 (12.4)	250 (17.3)	61 (28)
B4250A-4	B4250A-4J	1	404505	404803	250 (17.3)	250 (17.3)	61 (28)
B4250S-4	B4250S-4J	1	404511	404809	250 (17.3)	250 (17.3)	61 (28)
B4250T-4	B4250T-4J	1	404517	404815	250 (17.3)	250 (17.3)	61 (28)
B4250B-4	B4250B-4J	1	404523	404821	250 (17.3)	250 (17.3)	61 (28)
B4250A-5	B4250A-5J	1¼	404529	404827	250 (17.3)	250 (17.3)	61 (28)
B4250S-5	B4250S-5J	1¼	404535	404832	250 (17.3)	250 (17.3)	61 (28)
B4250T-5	B4250T-5J	1¼	404541	404838	250 (17.3)	250 (17.3)	61 (28)
B4250B-5	B4250B-5J	1¼	404547	404844	250 (17.3)	250 (17.3)	61 (28)
B4250A-6	B4250A-6J	1½	404553	404850	250 (17.3)	250 (17.3)	61 (28)
B4250S-6	B4250S-6J	1½	404559	404855	250 (17.3)	250 (17.3)	61 (28)
B4250T-6	B4250T-6J	1½	404565	404861	250 (17.3)	250 (17.3)	61 (28)
B4250B-6	B4250B-6J	1½	404571	404866	250 (17.3)	250 (17.3)	61 (28)

Inverted Bucket Steam Traps (continued)

Series B BEAR TRAP®

Series B6

- Available in sizes 1½" and 2" NPT
- Maximum capacity 20,000 lbs./hr. (9072 kg/hr.)
- Meets Mil specification WW-T-696-E Type I, Style B, Class 1-7
- Completely drains condensate and air at saturation temperature
- Stainless steel internal components
- Resistant to moderate water hammer
- Bottom inlet and top outlet
- Internal parts mounted on cover for easy service
- Maximum temperature 406°F (208°C)
- Maximum pressure 250 psig (17.3 bar)



Dimensions, in. (mm)

Series	Size in.	A	B
B6	1½, 2	10 ³ / ₁₆ (258)	17 (432)

Materials of Construction

Part	Specifications
Body and cover	Cast Iron 30,000 psi tensile
Valve Pin and Seat	Stainless Steel (Hardened)
Bucket	Stainless Steel
Lever Assembly	Stainless Steel
Cover Bolts	Grade 5 Steel

Ordering Information

Model Number	Size in.	NPT Part Number	Seat Differential Pressure Rating psi (bar)	Body Design Pressure psi (bar)	Weight lbs. (kg)
B6025A-6	1½	404690	25 (1.7)	250 (17.3)	80 (36)
B6025A-8	2	404694	25 (1.7)	250 (17.3)	80 (36)
B6040A-6	1½	404691	40 (2.8)	250 (17.3)	80 (36)
B6040A-8	2	404695	40 (2.8)	250 (17.3)	80 (36)
B6125A-6	1½	404692	125 (8.6)	250 (17.3)	80 (36)
B6125A-8	2	404696	125 (8.6)	250 (17.3)	80 (36)
B6250A-6	1½	404693	250 (17.3)	250 (17.3)	80 (36)
B6250A-8	2	404697	250 (17.3)	250 (17.3)	80 (36)

Series B BEAR TRAP®

Capacities (Gross Ratings)

Series	Orifice Size In (mm)	Seat Pressure psi (bar)	Pressure Differential Pounds Per Square Inch (bar)																	
			1/2 (.035)	1 (0.07)	2 (0.14)	5 (0.35)	10 (0.69)	15 (1.0)	25 (1.69)	30 (2.1)	40 (2.8)	50 (3.5)	60 (4.2)	75 (5.2)	100 (6.9)	125 (8.6)	150 (10.4)	200 (13.8)	250 (17)	
			Capacity lbs./hr. (kg/hr.)																	
B6	.875 (22.2)	25 (1.69)	3930 (1784)	5250 (2383)	7330 (3327)	11000 (4994)	14100 (6396)	16300 (7394)	20000 (9072)											
	.750 (19.0)	40 (2.8)	3100 (1406)	4160 (1887)	5400 (2449)	7600 (3447)	9000 (4082)	12900 (5851)	16000 (7258)	17300 (7847)	20000 (9080)									
	.500 (12.7)	125 (8.6)	1720 (780)	2280 (1035)	3200 (1452)	4800 (2179)	6500 (2951)	7800 (3541)	9700 (4400)	10600 (4812)	12000 (5448)	13800 (6265)	14300 (6492)	15300 (6946)	18000 (8172)	20000 (9080)				
	.375 (9.53)	250 (17)	1180 (535)	1570 (712)	2200 (998)	3300 (1498)	4500 (2043)	5400 (2451)	6800 (3084)	7400 (3359)	8400 (3813)	9300 (4222)	10200 (4630)	11000 (4994)	12800 (5811)	14000 (6356)	15300 (6946)	17500 (7945)	19000 (8626)	

Thermodisc Steam Traps Series TD BEAR TRAP®

The Series TD Thermodisc traps are designed for applications such as high-pressure steam drips and tracer lines, or others with light to moderate loads.

Typical applications for Thermodisc traps include:

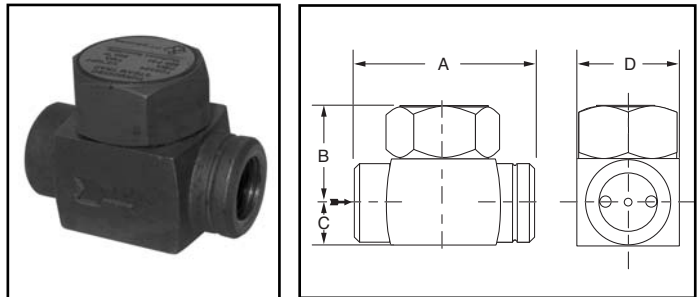
- Drip traps on steam mains and supply lines
- Tracer lines
- Laundry and kitchen equipment
- Superheated steam applications
- Outdoor installations that are subject to freezing

Series TD Thermodisc Traps

- Stainless steel construction resists both internal and external corrosion
 - Stainless steel cast body
 - Hardened stainless steel disc is the only moving part
 - Resists water hammer
- Unaffected by superheated steam
- Simplified installation
 - Traps operate in any orientation (horizontal preferred)
 - Freeze resistant when trap is piped in vertical orientation due to self-draining design
- Easy to monitor trap operation – audible discharge cycle makes checking operation simple
- Operate over wide pressure range from 2 to 600 psig (0.14 to 41.4 bar)
- Operates with back pressure up to 80% of line pressure
- Maximum Pressure – PMO/PMA 600 psi (41.4 bar)
- Maximum Temperature – TMO/TMA 800°F (426°C)

Materials of Construction	
Part	Specifications
Body	420F Stainless Steel ASTM A743 CA40F
Cap	420 Stainless Steel ASTM A743 CA40
Disc	420 Stainless Steel ASTM A743 CA40

Series TD6520 Thermodisc Trap

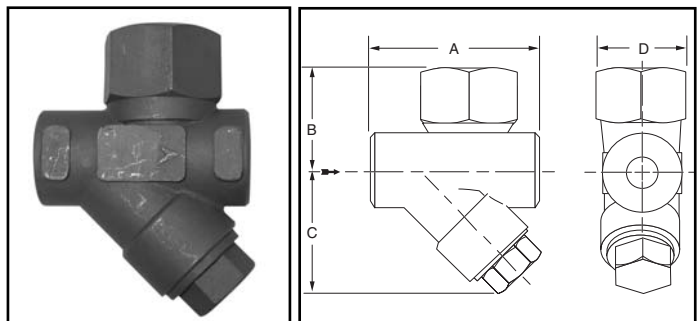


- Capacities to 4700 lbs/hr (2132 kg/hr)

Dimensions in. (mm)

Model	Size in.	A	B	C	D
TD6523	3/8	2 (51)	1 13/16 (21)	9/16 (14)	1 1/2 (38)
TD6524	1/2	2 3/4 (70)	1 3/8 (35)	5/8 (16)	1 1/2 (38)
TD6526	3/4	2 3/4 (70)	1 5/8 (41)	13/16 (21)	2 (51)
TD6528	1	3 1/4 (83)	1 15/16 (49)	15/16 (24)	2 (51)

Series TD6420 Thermodisc Trap with Integral Strainer



- Integral strainer to protect trap from contamination
- Capacities to 2200 lbs/hr (998 kg/hr)

Dimensions in. (mm)

Model	Size in.	A	B	C	D
TD6423	3/8	3 1/16 (78)	1 7/8 (48)	2 3/8 (60)	1 11/16 (43)
TD6424	1/2	3 1/16 (78)	1 7/8 (48)	2 3/8 (60)	1 11/16 (43)
TD6426	3/4	3 1/16 (78)	1 7/8 (48)	2 3/8 (60)	1 11/16 (43)
TD6428	1	3 3/4 (82)	2 1/8 (54)	2 1/2 (64)	1 11/16 (43)

Series 650 **BEAR TRAP**[®] (continued)

Capacities (Gross Ratings) - at 10°F Below Saturation

Model	Size in.	Pressure Differential psig (bar)													
		2 (0.14)	5 (0.35)	10 (0.69)	25 (1.7)	50 (3.5)	75 (5.2)	100 (6.9)	150 (10.4)	200 (13.8)	250 (17.3)	300 (20.7)	400 (27.6)	500 (34.5)	600 (41.4)
		Capacities in lbs./hr. (kg/hr.)													
TD6523	3/8	180 (82)	185 (84)	190 (86)	210 (95)	255 (116)	315 (143)	375 (170)	500 (227)	610 (277)	700 (318)	790 (358)	955 (433)	1105 (501)	1250 (567)
TD6524	1/2	290 (132)	310 (141)	345 (156)	440 (200)	580 (263)	710 (322)	810 (367)	995 (451)	1140 (517)	1275 (578)	1405 (637)	1630 (739)	1825 (828)	2000 (907)
TD6526	3/4	395 (179)	420 (191)	465 (211)	600 (272)	815 (370)	1000 (454)	1160 (526)	1440 (653)	1675 (760)	1895 (860)	2095 (950)	2430 (1102)	2750 (1247)	3050 (1383)
TD6528	1	620 (201)	660 (299)	730 (331)	920 (417)	1215 (551)	1490 (676)	1740 (789)	2195 (996)	2585 (1173)	2910 (1320)	3230 (1465)	3770 (1710)	4245 (1926)	4700 (2132)
TD6423	3/8			315 (143)	370 (168)	425 (193)	520 (236)	575 (261)	800 (363)	900 (408)	1080 (490)	1280 (581)	1380 (626)	1480 (671)	1650 (748)
TD6424	1/2			315 (143)	370 (168)	425 (193)	520 (236)	575 (261)	800 (363)	900 (408)	1080 (490)	1280 (581)	1380 (626)	1480 (671)	1650 (748)
TD6426	3/4			650 (295)	740 (336)	800 (363)	1000 (454)	1100 (499)	1400 (635)	1540 (699)	1630 (739)	1760 (798)	1930 (875)	2070 (939)	2200 (998)
TD6428	1			650 (295)	740 (336)	800 (363)	1000 (454)	1100 (499)	1400 (635)	1540 (699)	1630 (739)	1760 (798)	1930 (875)	2070 (939)	2200 (998)

Ordering Information

Equipped	NPT Model Number	BSPT Model Number	Size in.	NPT Part Number	BSPT Part Number	Weight lbs. (kg)
Without Strainer	TD6523	TD6523-J	3/8	405151	405159	0.8 (0.36)
	TD6524	TD6524-J	3/8	405152	405160	1.3 (0.59)
	TD6526	TD6526-J	3/4	405153	405161	2.1 (0.95)
	TD6528	TD6528-J	1	405154	405162	3.2 (1.45)
With Strainer	TD6423	TD6423-J	3/8	405155	405163	2.4 (1.1)
	TD6424	TD6424-J	1/2	405156	405164	2.4 (1.1)
	TD6426	TD6426-J	3/4	405157	405165	2.7 (1.2)
	TD6528	TD6428-J	1	405158	405166	3.3 (1.5)