

Condensate Handling Equipment

Condensate and boiler feed units are used to return condensate to steam boiler. Applications include residential, commercial, institutional and industrial steam heating and industrial processing; dry cleaning plants, chemical refineries, wood pulp paper processing, textile mills and manufacturing facilities.

Condensate Units

ITT produces preconfigured, stock condensate units, such as the Watchman Series WC cast iron and WCS steel units in a number of receiver sizes. Depending on the size, they may be equipped with a simple or duplex pump arrangement.

In addition, Domestic Pump condensate units can be built to specific requirements for system size, pumping configurations and with many optional accessories.

Boiler Feed Units

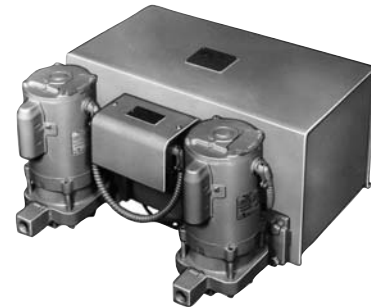
Stock Boiler Feed Units, such as the Series HBF or Series VBF (shown), are available for systems up to 27,800 sq. ft. ER (200 Boiler Hp) in simplex or duplex pump arrangements. They can be ordered with a variety of options, such as type of strainer and control panel mounting.

Domestic Pump Boiler Feed Units can be manufactured on a built-to-order basis to meet specific requirements with cast iron or steel receivers for systems up to 300 Boiler Hp. In addition to the receiver material and size, other customization includes number of pumps; capacity, discharge-pressure and speed of the pumps; and control panel capabilities and features.

For more details and information about sizing and selection of Domestic Pump condensate equipment, contact your local ITT Bell & Gossett Representative listed on the back cover of this catalog.



Series WC and WCS Simplex Design



Series WCS Duplex Design



Series HC



Series VBF Duplex Design



Series HCM