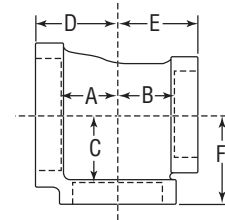


Cast Iron Threaded Fittings

Class 125 (Standard)

FIGURE 359
Tee Reducing



Size					A		B		C		D		E		F		Unit Weight						
NPS	DN	NPS	DN	NPS	DN	in	mm	in	mm	in	mm	in	mm	in	mm	in	mm	lbs	kg				
Black																							
3 1/2	90	3 1/2	90	1 1/2	40	1 3/8	35	1 3/8	35	2 7/16	62	2 3/8	60	2 3/8	60	3 1/16	78	8.87	4.02				
				2	50	1 5/8	41	1 5/8	41	2 7/16	62	2 5/8	67	2 5/8	67	3 3/16	81	9.94	4.51				
4	100	1	25	4	100	2 3/4	70	2 15/16	75	2 3/4	70	3 3/4	95	3 1/2	89	3 3/4	95	13.52	6.13				
				1 1/2	40	4	100	2 3/4	70	2 7/8	73	2 3/4	70	3 3/4	95	3 1/2	89	3 3/4	95	13.47	6.11		
		2	50	2	50	1 11/16	43	1 7/8	48	2 3/4	70	2 11/16	68	2 9/16	65	3 1/2	89	3 3/4	95	11.34	5.14		
				4	100	2 3/4	70	2 3/4	70	2 3/4	70	3 3/4	95	3 1/2	89	3 3/4	95	13.89	6.30				
		2 1/2	65	2 1/2	65	1 7/8	48	1 13/16	47	2 5/8	67	2 15/16	75	2 13/16	73	3 9/16	90	3 3/4	95	11.78	5.34		
				4	100	2 3/4	70	2 3/4	70	2 3/4	70	3 3/4	95	3 5/8	92	3 3/4	95	15.75	7.14				
		3	80	2	50	1 11/16	43	1 9/16	40	2 3/4	70	2 11/16	68	2 9/16	65	3 1/2	89	3 3/4	95	10.21	4.63		
				2 1/2	65	1 7/8	48	1 7/8	48	2 5/8	67	2 15/16	75	2 13/16	73	3 9/16	90	3 3/4	95	11.25	5.10		
				3	80	2 1/4	57	2 1/8	54	2 11/16	68	3 1/4	83	3 1/8	79	3 5/8	92	3 3/4	95	12.50	5.67		
				4	100	2 3/4	70	2 11/16	68	2 3/4	70	3 3/4	95	3 5/8	92	3 3/4	95	15.04	6.82				
				4	100	1	25	1 3/16	22	1 3/16	22	2 3/4	70	2 5/16	59	2 5/16	59	3 5/16	84	3 3/4	95	10.40	4.72
						1 1/4	32	1 5/16	24	1 5/16	24	2 5/8	67	2 5/16	59	2 5/16	59	3 5/16	84	3 3/4	95	10.38	4.71
2	50	1 1/2	40	1 7/16	37	1 7/16	37	2 11/16	68	2 7/16	62	2 7/16	62	3 5/16	84	3 3/4	95	10.75	4.88				
		2	50	1 11/16	43	1 11/16	43	2 3/4	70	2 11/16	68	2 11/16	68	3 1/2	89	3 3/4	95	11.63	5.27				
		2 1/2	65	2	51	2	51	2 5/8	67	2 15/16	75	2 15/16	75	3 9/16	90	3 3/4	95	12.85	5.83				
		3	80	2 1/4	57	2 1/4	57	2 11/16	68	3 1/4	83	3 1/4	83	3 5/8	92	3 3/4	95	14.12	6.40				
5	125	5	125	3 3/8	86	3 3/8	86	2 13/16	73	4 3/8	111	4 3/8	111	4	102	4 1/16	103	20.88	9.47				
		6	150	3 7/8	98	3 7/8	98	2 7/8	73	4 15/16	125	4 15/16	125	4 1/16	103	4 1/16	103	26.36	11.95				
5	125	5	125	2	50	1 3/4	44	1 3/4	44	3 7/16	87	2 15/16	75	2 15/16	75	4 1/8	105	17.43	7.90				
		3	80	2 5/16	59	2 5/16	59	3 1/4	83	3 1/2	89	3 1/2	89	4 1/4	108	4 1/4	108	20.00	9.07				
		4	100	2 13/16	71	2 13/16	71	3 3/8	86	4	102	4	102	4 3/8	111	4 3/8	111	23.83	10.81				
6	150	4	100	4	100	2 7/8	73	2 13/16	71	3 7/8	98	4 1/16	103	4	102	4 15/16	125	30.00	13.61				
		6	150	2 1/2	65	2	51	2	51	3 13/16	97	3 1/4	83	3 1/4	83	4 3/4	121	4 3/4	121	25.67	11.64		
				3	80	2 3/8	60	2 3/8	60	3 13/16	97	3 9/16	90	3 9/16	90	4 13/16	122	4 13/16	122	27.46	12.45		
				4	100	2 7/8	73	2 7/8	73	3 7/8	98	4 1/16	103	4 1/16	103	4 15/16	125	4 15/16	125	32.44	14.71		
				5	125	3 3/8	86	3 3/8	86	3 13/16	97	4 5/8	117	4 5/8	117	5	127	5	127	37.00	16.78		

Note: See page 37 for pressure-temperature ratings.