

Series 1575

Conductance Probe

Low Water Cut-Offs & Pump Controllers



MM-285

The Series 1575 provides continuous protection against a low water condition and satisfies pump control needs for commercial and industrial steam boilers.

The 1575 compensates for rapidly changing water levels. It has adjustable burner and pump settings and powerful 1 Hp relays.

Typical Applications

- Primary low water fuel cut-off protection and pump control for commercial and industrial steam boilers
- Motorized valve controller, low water cut-off, high water cut-off and alarm actuator for boilers, vessels and tanks

Features

- Set points and differentials remain constant throughout pressure range
- Auto reset
- Probe operation diagnostics
 - Sensitivity monitor
 - Sequence monitor
 - Wetted probe monitor
- Adjustable 60-second burner-off time delays
- Adjustable pump differentials by cutting probe to desired set points
- Redundant low-water and pump-off circuitry
- 1 Hp burner and pump relays
- Control unit can be mounted in any convenient location
- Test button standard
- Probe chamber with 3 probes and gauge glass tapplings
- 4th probe can be added for high water control

Benefits

- Prevents rapid burner and pump cycling
- Constant operation throughout pressure range
- Electrical starters not required for motors up to 1 Hp
- Easy monitoring of operation
- Easy troubleshooting

Specifications

- NEMA 1 electrical enclosure
- NEMA4X chamber enclosure
- Maximum operating pressure 250 psi (17.3 kg/cm)
- Maximum ambient temperature 135° F (57° C)
- Maximum operating temperature 406° F (208° C) (at probes)



Probe Chamber
(With 3 probes standard)



Control Unit
(For remote mounting)

Electrical Ratings

Electrical Rating and Switch Ratings

Supply Voltage	Probe Voltage	Full Load (Amps) NO (NC) VAC	Locked Rotor (Amps) NO (NC) VAC	Pilot Duty (VA) NO (NC) VAC	Motor (HP) NO (NC) VAC
120 VAC 50/60Hz	5 VAC Maximum	16 (5.8), 120 8 (2.9), 240	96 (34.8), 120 48 (17.4), 240	470 (290), 120 470 (290), 240	1 (1/4), 120 1 (1/4), 240

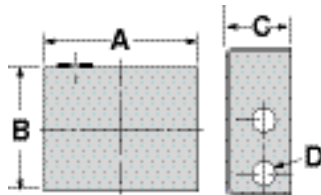
Ordering Information

Part Number	Model	Description	Weight lbs. (kg)
171907	1575	Combination low water cut-off/pump controller	30 (13.6)
Replacement Parts			
310490	150E-CU	Control unit for 1575 or 150E or 157E	2.7 (1.2)
176319	PA-750-HP	High Pressure Probe	0.5 (.23)
179530	PS-1-SS	12" (305mm) Sensing Probe w/ Teflon®	0.5 (.23)

Model 1575 Probe Chamber Dimensions, in. (mm)

A	B	C	D	E
18 ⁵ / ₈ (473)	11 ¹ / ₂ (292)	3 ¹ / ₈ (79)	2 ¹ / ₂ (64)	3 ¹ / ₄ (82)

F	G	H NPT	J NPT
4 ³ / ₈ (111)	4 ³ / ₁₆ (106)	1	1/2

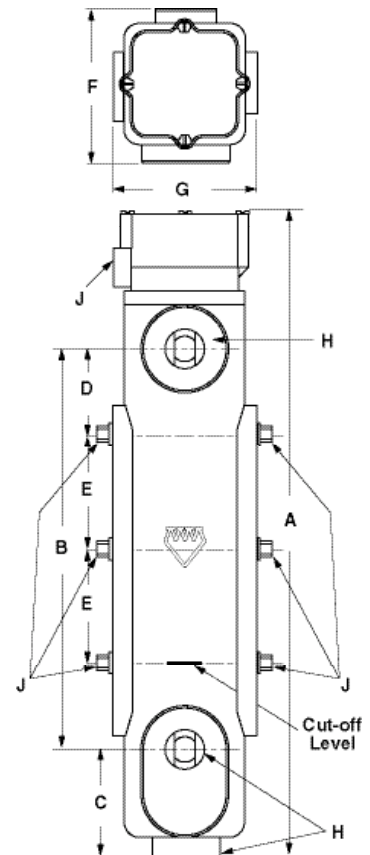
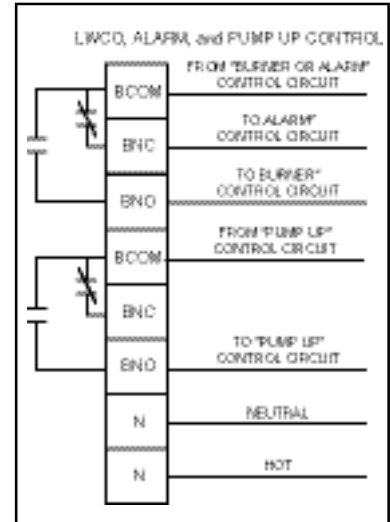


Electrical Control Unit

Model 1575 Electrical Control Unit Dimensions, in. (mm)

A	B	C	D
6 ¹ / ₂ (159)	5 ³ / ₁₆ (132)	2 ³ / ₄ (70)	3/4 (20)

Electrical Wiring



Probe Chamber