

Fig. 47

Concrete Single Lug Plate

Size Range: 1/2" through 2"

Material: Carbon steel

Finish: Plain or Galvanized

Service: Structural attachment to concrete ceiling lug is used in conjunction with Fig. 299 (see page 94) forged steel clevis and anchors of sufficient strength to hold the desired load.

Ordering: Specify rod size, figure number, name and finish.

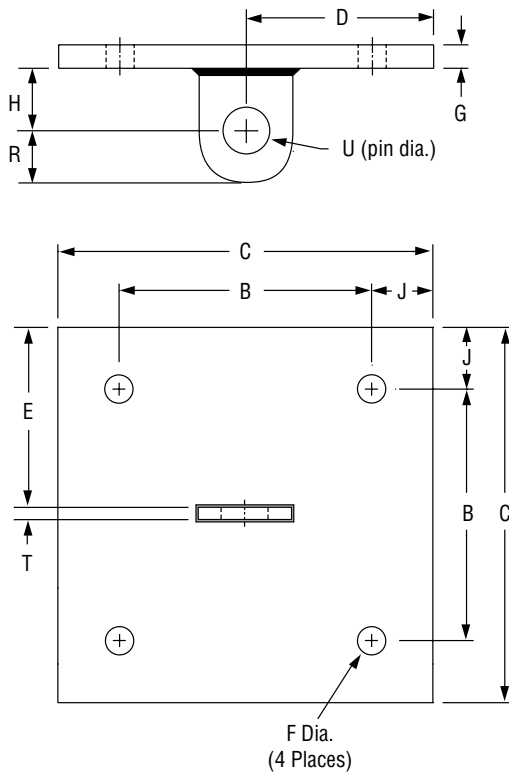


FIG. 47: LOAD (LBS) • WEIGHT (LBS) • DIMENSIONS (IN)

Rod Size A	Max Load ■	Weight	J	B	C	D	E	F	G	H	R	T	U	
1/2	1,350	11.1	1	8	10	5	4 7/8	9/16	3/8	1 1/2	1 1/4	1/4	5/8	
5/8	2,160	14.6					4 13/16	11/16	1/2				3/4	7/8
3/4	3,230	14.8					5 3/4	13/16	3/4	2			1 1/2	1 1/8
7/8	4,480	22.0					5 11/16	15/16	1	3			5/8	1 3/8
1	5,900	31.9	2	12	12	6	5 5/8	1 1/8	1 1/4	3	2 1/2	3/4	1 7/8	
1 1/4	9,500	43.8					5 5/8	1 3/8					1	4
1 1/2	13,800	45.6					5 5/8	1 3/8	1 1/4	4			2 1/4	
1 3/4	18,600	55.7					5 5/8	1 3/8	1 1/4	4			2 1/4	
2	24,600	58.2												

■ Based on the rod diameter only. Rating is subject to the conditions that the concrete and anchors used are of sufficient strength to hold the load.