

## Fig. 128R

### Rod Threaded, Ceiling Flange

**Size Range:**  $\frac{3}{8}$ " and  $\frac{1}{2}$ "

**Material:** Malleable iron

**Finish:** Plain or Galvanized

**Service:** Recommended for attachment to wood beams or ceiling.

**Ordering:** Specify rod size, figure number, name and finish.

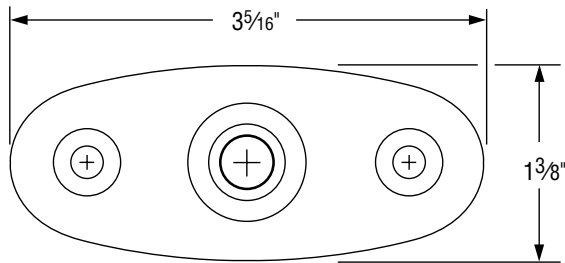
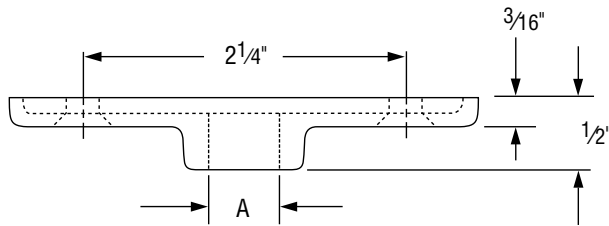


FIG. 128R: LOAD (LBS) • WEIGHT (LBS) • DIMENSIONS (IN)				
Rod Size A	Max Load	Weight	Screws (not included)	
			Quantity	Size No.
$\frac{3}{8}$	180	0.16	2	12
$\frac{1}{2}$				