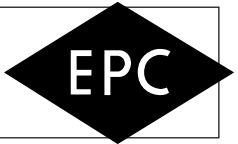


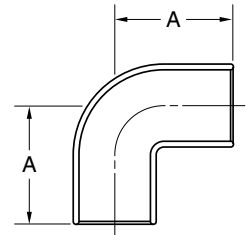
# Wrot & Cast Pressure Fittings Adapters & Elbows



WROT <b>104</b>		<b>Male Adapter-cont.</b> Copper to Male N.P.T.			CAST <b>4704</b>	
Nominal Size In Inches	Part Number	Box Quantity	Master Pack	Approx. Net Wt.	Dim. A	
1/8 x 1/4	30284	50	1000	0.033	7/16	
1/4 x 1/2	30292	50	500	0.069	7/8	
1/4 x 3/8	30294	50	1000	0.060	63/64	
1/4 x 1/8	30296	50	1000	0.014	17/32	
3/8 x 3/4	30302	25	250	0.143	1 11/32	
3/8 x 1/2	30304	50	500	0.072	15/16	
3/8 x 1/4	30306	50	1000	0.039	5/8	
1/2 x 1	30314	20	200	0.240	1	
1/2 x 3/4	30316	25	250	0.135	13/16	
1/2 x 3/8	30318	50	500	0.053	47/64	
1/2 x 1/4	30320	50	500	0.059	5/8	
5/8 x 3/4	30324	25	250	0.129	1 1/8	
5/8 x 1/2	30326	25	500	0.075	11/16	
** 3/4 x 1 1/2	34329	5	50	0.596	-	
** 3/4 x 1 1/4	34330	-	120	0.375	-	
3/4 x 1	30336	20	200	0.234	7/8	
3/4 x 1/2	30338	25	250	0.106	53/64	
1 x 1 1/2	30344	10	100	0.544	1 29/32	
1 x 1 1/4	30346	10	100	0.399	1 21/32	
1 x 3/4	30348	25	250	0.206	1 3/32	
1 x 1/2	30350	25	250	0.176	31/32	
** 1 1/4 x 2	34345	-	40	0.880	-	
1 1/4 x 1 1/2	30358	10	100	0.523	1 45/64	
1 1/4 x 1	30360	10	100	0.304	1 1/4	
1 1/4 x 3/4	30362	10	100	0.273	1	
1 1/2 x 2	30370	5	50	0.772	1 25/32	
1 1/2 x 1 1/4	30372	10	100	0.386	1 27/64	
1 1/2 x 1	30374	10	100	0.435	1 9/64	
** 2 x 2 1/2	34357	-	25	1.565	-	
2 x 1 1/2	30380	5	50	0.650	1 23/64	
2 x 1 1/4	30382	5	50	0.631	1 3/4	
2 1/2 x 2	30390	5	50	0.931	1 9/64	

WROT <b>104-2</b>		<b>Male Street Adapter-cont.</b> Fitting to Male N.P.T.			CAST <b>4704-2</b>	
Nominal Size In Inches	Part Number	Box Quantity	Master Pack	Approx. Net Wt.	Dim. A	
1	30452	20	200	0.232	2 5/32	
1 1/4	30460	10	100	0.444	2 1/2	
1 1/2	30470	10	100	0.508	2 13/16	
2	30480	5	50	0.749	2 13/16	
** 2 1/2	34417	-	25	1.550	-	
** 3	34422	-	20	2.280	-	
1/2 x 3/4	30438	25	250	0.153	-	
1/2 x 3/8	30440	50	500	0.045	-	
3/4 x 1/2	30448	25	250	0.093	1 23/32	

WROT <b>105-C</b>		<b>90° Street Elbow-Close Ruff</b> Fitting to Fitting			CAST	
Nominal Size In Inches	Part Number	Box Quantity	Master Pack	Approx. Net Wt.	Dim. A	
1/8	31450	25	500	0.008	5/8	
1/4	31452	25	500	0.013	27/32	
3/8	31456	25	500	0.029	15/16	
1/2	31460	25	500	0.044	1 1/32	
5/8	31464	10	200	0.073	1 1/4	
3/4	31468	25	250	0.086	1 13/32	
1	31472	10	100	0.166	1 21/32	
1 1/4	31476	5	50	0.269	1 29/32	

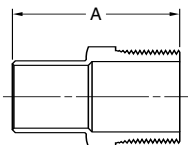


FTG. x FTG.

WROT <b>104-2</b>		<b>Male Street Adapter</b> Fitting to Male N.P.T.			CAST <b>4704-2</b>	
Nominal Size In Inches	Part Number	Box Quantity	Master Pack	Approx. Net Wt.	Dim. A	
1/4	30424	50	1000	0.033	1 1/6	
3/8	30430	50	1000	0.049	1 3/16	
1/2	30436	50	500	0.074	1 7/16	
3/4	30444	25	250	0.143	1 27/32	



FTG. x M



\*\* Cast Bronze Only

\*Factory Option—consult factory for price and delivery information.