

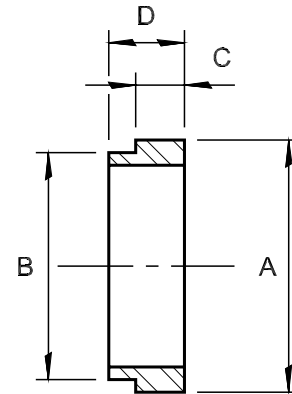
# TUBE TO PIPE ADAPTERS

## 316L STAINLESS STEEL

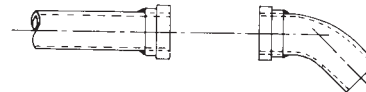
Unique, stainless steel adapters for utilizing mechanical couplings on OD tube and fittings – eliminating the roll groove.

NOMINAL SIZE	DIMENSIONS			
	A	B	C	D
1	1.315	1.010	5/8	1 1/8
1 1/4	1.660	1.260	5/8	1 1/8
1 1/2	1.900	1.510	5/8	1 1/8
2	2.375	2.010	5/8	1 1/8
2 1/2	2.875	2.510	5/8	1 1/8
3	3.500	3.010	5/8	1 1/8
3 1/2	4.000	3.510	5/8	1 1/8
4	4.500	4.010	5/8	1 1/8
6	6.625	6.010	5/8	1 1/8
8	8.625	8.020	3/4	1 5/16
10	10.750	10.020	3/4	1 3/8
12	12.750	12.020	3/4	1 3/8

Call us with your particular problem. Let us tell you why roll grooved piping components may be your best buy!



**A Flush End Connector**



By means of tube to pipe adapters, light wall tube and fittings can be joined with either snap joint or two bolt type mechanical couplings. No internal roll grooves. The adapters keep the ID of tube in alignment creating an economical metal to metal connector.

**A Male-Female Metal to Metal Connector**



For field attachment: Installer may alternately extend and set back adapters on tube or fitting approximately 3/16 of an inch. The result: A male and female type connector – true alignment – and exceptionally strong joint.

**Joining Pipe Size to Tube Size**



Joining IPS pipe to tube: By the use of a tube to pipe adapter, tube OD and IPS pipe can be joined as illustrated.

