

Fig. 274: with Base Plate Fig. 275: without Base Plate Fig. 274P: Cast Iron Base Plate only

Adjustable Pipe Roll Stand

Size Range: 2" through 42"

Material: Cast iron base plate, stand roll; steel adjusting screws

Finish: Plain or Galvanized

Service: For support of pipe lines where longitudinal movement due to expansion and contraction may occur and where vertical and lateral adjustment during installation may be required.

Maximum Temperature: 450° F at roller

Approvals: Complies with Federal Specification A-A-1192A (Type 46), WW-H-171-E (Type 47), ANSI/MSS SP-69 and MSS SP-58 (Type 46).

Installation: Base plate is provided with two holes for anchorage to floor, pier, structural support and similar constructions, as well as to welded steel brackets Fig. 195 page 73 and Fig. 199, page 74. Adjustable pipe roll stand *without base plate*, Fig. 275, can be used for supporting tunnel piping, etc., by resting ends of adjusting screws on structural steel angles, channels, etc.

Adjustment: Vertical adjustment is obtained by use of the four adjusting screws located on corners of stand. Lateral adjustment is secured by stand sliding on each of adjusting screws.

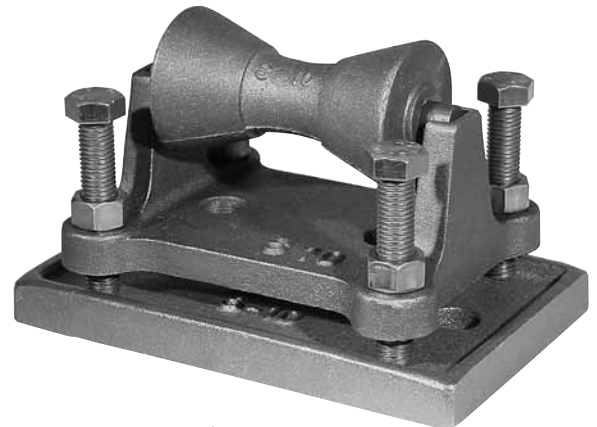
How to size:

- (1) If roll is to support bare pipe, select the size directly from nominal pipe size (see below).
- (2) If used with pipe covering protection saddle, see page 114 for size of pipe roll.

Ordering: Specify pipe roll size, figure number, name and finish. For further dimensions of stand, see Fig. 271, page 124. Be certain to order oversized rolls when insulation and protection saddles are required.

Note: Refer to Fig. 75 SD and 76 SD for additional pipe roll designs.

Standard line of carbon steel base plates available.



See Fig. 271 for Additional Dimensions

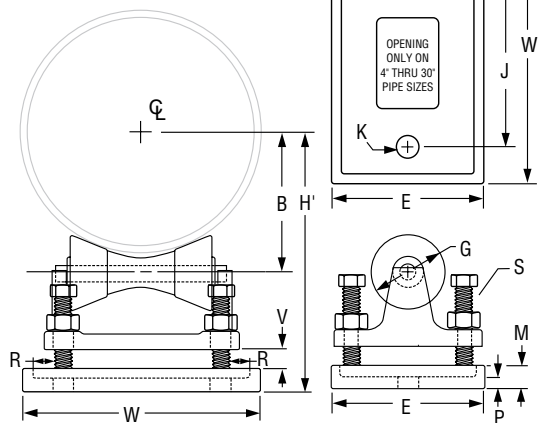


FIG. 274, 275, 274P: DIMENSIONS (IN)

Pipe Size	Max Load	Weight			H' Min	H' Max	E	J	K	V Max	M	P	R	S	W
		Fig. 274	Fig. 275	Fig. 274P											
2	390	15.2	7.8	7.4	5 1/8	5 3/8	5 1/2	3 3/8	1	7/8	1	3/4	1	3/4	6 7/8
2 1/2					5 3/8	5 5/8									
3					5 3/4	6									
3 1/2					6	6 1/4									
4	950	19.3	10.3	9.0	6 1/2	7	5 3/4	5 1/8	1	1 1/8	1	3/4	1	3/4	8 1/8
5					7	7 1/2									
6					7 5/8	8 1/8									
8					10 3/8	11 1/8									
10	2,100	32.1	18.1	14.0	11 1/2	12 3/4	6 3/4	7 3/8	1	1 3/4	1 1/8	1 1/16	1	7/8	10 5/8
12					13	14 1/4									
14					13 3/8	14 7/8									
16					15 1/4	16 5/8									
18	4,980	71.3	45.3	26.0	16 3/8	17 3/4	8 5/8	11 1/8	1	1 7/8	1 1/4	7/8	1 1/16	1	14 5/8
20					17 3/8	18 3/4									
24					19 5/8	21									
30					24	26 3/4									
36	12,000	304.0	176.0	128.0	28 3/8	31 3/4	11	19	1 1/8	4 1/2	2	1 1/2	2 1/4	1 1/2	23
42					31 1/2	34 7/8									

DI/CI ROLL SIZING	
DI/CI Pipe Size	Fig. 274 Roller Size
3	4
4	5
6	6
8	8
10	10
12	14
14	16
16	18
18	20
20	24
24	30
30	N/A